

CA-SRF-000620

9/6/2022

41,296 acres

IR updated 9/5/2022

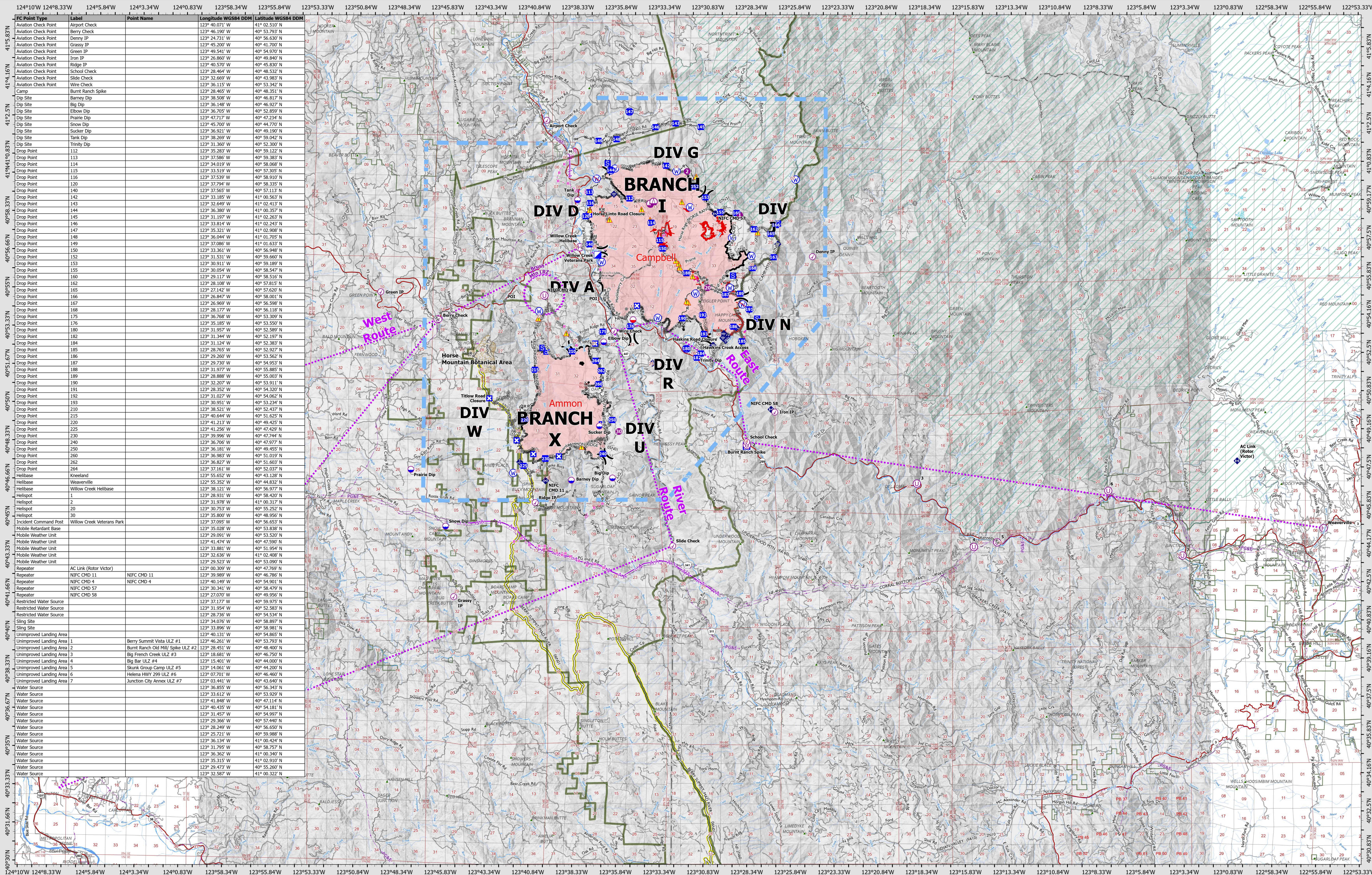
- ✕ Division Break
- ⊙ Aviation Check Point
- ⊙ Dip Site
- ⊙ Mobile Retardant Base
- ⊙ Helispot
- ⊙ Helibase
- ⊙ Sling Site
- ◆ Unimproved Landing Area
- ▢ Incident Command Post
- ◆ Drop Point
- ⊙ Closure
- ⊙ Camp
- ◆ Staging Area
- ◆ Mobile Weather Unit
- ◆ Internet Access
- ◆ Repeater
- ◆ Water Source
- ⊙ Restricted Water Source
- ⊙ Other
- Bridge
- ◆ Retardant Drop
- ◆ Aviation Route
- ◆ UAS Launch and Recovery Zone
- ◆ Temporary Flight Restriction
- ◆ Completed Dozer Line
- ◆ Completed Fuel Break
- ◆ Completed Hand Line
- Completed Road as Line
- Planned Burnout
- Planned Dozer Line
- Planned Hand Line
- Planned Road as Line
- Contained
- Uncontained
- ▲ Summit
- ⊙ Tower
- ▬ Forest Administrative Boundaries
- ▬ County Line
- ▬ Powerline
- ▬ Fire Perimeter
- ◆ Aerial Hazard
- ▬ Horse Mtn Botanic Area

Datum: North American 1983

CALM15 GISSS Updated: 9/5/2022 2:50

# AIR OPERATIONS - Regional

9/6/2022



**SRF Lightning Complex**  
 CA-SRF-000620  
 9/6/2022  
 41,296 acres  
 IR updated 9/5/2022

- ✕ Division Break
- Aviation Check Point
- Dip Site
- Mobile Retardant Base
- Helispot
- Helibase
- Sling Site
- ◆ Unimproved Landing Area
- Incident Command Post
- Drop Point
- Closure
- Camp
- Staging Area
- ◆ Mobile Weather Unit
- ◆ Internet Access
- ◆ Repeater
- ◆ Hazard
- Water Source
- Restricted Water Source
- Other
- Bridge
- ◆ Retardant Drop
- ◆ Aviation Route
- ◆ UAS Launch and Recovery Zone
- ◆ Temporary Flight Restriction
- ◆ Completed Dozer Line
- ◆ Completed Fuel Break
- ◆ Completed Hand Line
- Completed Road as Line
- Planned Burnout
- Planned Dozer Line
- Planned Hand Line
- Planned Road as Line
- Contained
- Uncontained
- ▲ Summit
- Tower
- Forest Administrative Boundaries
- County Line
- Powerline
- Fire Perimeter
- Aerial Hazard
- Horse Mtn Botanic Area








Miles  
0 0.75 1.5 3

Datum: North American 1983

