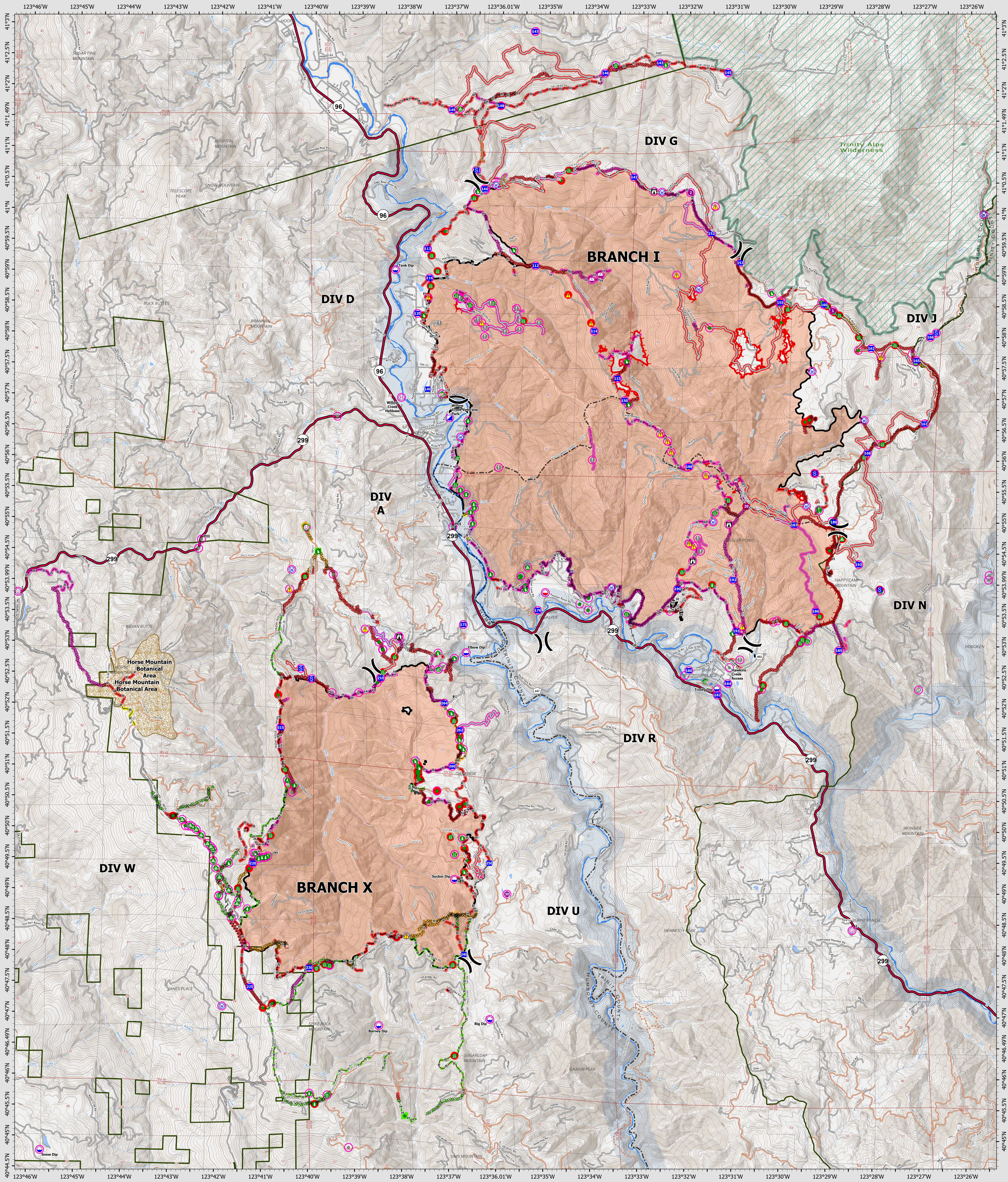


Suppression Repair Overview

9/6/2022



SRF Lightning Complex
 CA-SRF-000620
 9/6/2022
 41,296 acres
 IR updated 9/5/2022

- | | | | |
|---|---|--|---|
| Repair Status Point
<ul style="list-style-type: none"> ● In Use - Fire Management ○ Repair Needed ○ In Progress ○ Completed - Inspected ○ No Repair Needed ○ Other - See Comments | Repair Status Line
<ul style="list-style-type: none"> — In Use - Fire Management — Needs Assessment — Repair Needed — In Progress — Completed - Ready for Inspection — Completed - Inspected — No Repair Needed — Other - See Comments — Contained — Uncontained — Dip Site — Mobile Retardant Base | <ul style="list-style-type: none"> ● Helibase ○ Sling Site ○ Unimproved Landing Area X Incident Command Post ■ Drop Point ■ Staging Area ■ Lockout ■ Value at Risk ■ Other ■ Gate ■ Bridge ■ Water Development or Draft Site | <ul style="list-style-type: none"> ● Structure Wrap ● Stream Crossing ● Road Repair ● Resource Location ● Repair Point ● Landing or Log Deck ● Hazard Tree ● Fence - Cut/Damaged ● Dozer Push ● Culvert ● Clean Up Area ● Hazard ● Water Source |
|---|---|--|---|

- | | | | |
|--|--|--|--|
| <ul style="list-style-type: none"> — Completed Dozer Line — Completed Fuel Break — Completed Hand Line — Completed Road as Line — Access or Improved Road — Other — Repair Line — Road Repair — Retardant Drop — Wildfire Daily Fire Perimeter — Wild & Scenic Rivers — Wilderness | | | |
|--|--|--|--|