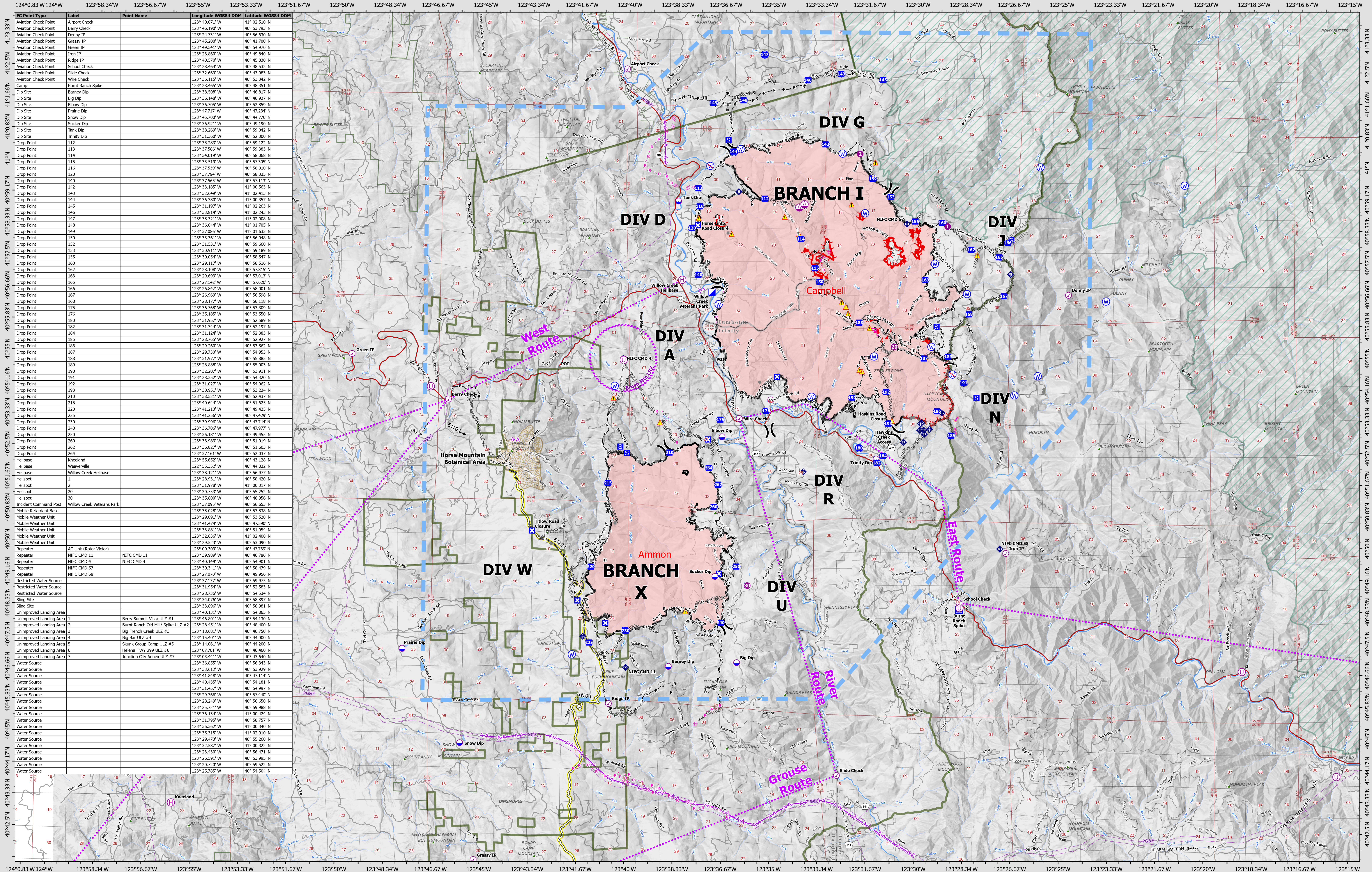


# AIR OPERATIONS - TFR

9/7/2022



FC Point Type	Label	Point Name	Longitude WGS84 DDM	Latitude WGS84 DDM
Aviation Check Point	Airport Check		123° 40.071' W	41° 02.510' N
Aviation Check Point	Berry Check		123° 46.190' W	40° 53.793' N
Aviation Check Point	Denny IP		123° 24.731' W	40° 56.630' N
Aviation Check Point	Grassy IP		123° 45.200' W	40° 41.700' N
Aviation Check Point	Green IP		123° 49.541' W	40° 54.970' N
Aviation Check Point	Iron IP		123° 26.860' W	40° 49.840' N
Aviation Check Point	Ridge IP		123° 40.570' W	40° 45.830' N
Aviation Check Point	School Check		123° 28.464' W	40° 48.532' N
Aviation Check Point	Slide Check		123° 32.669' W	40° 43.863' N
Aviation Check Point	Wire Check		123° 36.115' W	40° 53.342' N
Camp	Burnt Ranch Spike		123° 28.465' W	40° 48.351' N
Dip Site	Barney Dip		123° 38.508' W	40° 46.817' N
Dip Site	Big Dip		123° 36.148' W	40° 46.927' N
Dip Site	Elbow Dip		123° 36.705' W	40° 52.859' N
Dip Site	Prairie Dip		123° 42.717' W	40° 47.234' N
Dip Site	Snow Dip		123° 45.700' W	40° 44.770' N
Dip Site	Sucker Dip		123° 36.921' W	40° 49.190' N
Dip Site	Tank Dip		123° 38.269' W	40° 59.042' N
Dip Site	Trinity Dip		123° 31.360' W	40° 52.309' N
Drop Point	112		123° 35.122' W	40° 59.122' N
Drop Point	113		123° 37.586' W	40° 59.383' N
Drop Point	114		123° 34.019' W	40° 58.068' N
Drop Point	115		123° 33.519' W	40° 57.305' N
Drop Point	116		123° 37.539' W	40° 58.910' N
Drop Point	120		123° 37.794' W	40° 58.339' N
Drop Point	140		123° 37.565' W	40° 57.113' N
Drop Point	142		123° 33.185' W	41° 00.563' N
Drop Point	143		123° 32.649' W	41° 02.413' N
Drop Point	144		123° 36.380' W	41° 00.357' N
Drop Point	145		123° 31.197' W	41° 02.267' N
Drop Point	146		123° 33.814' W	41° 02.243' N
Drop Point	147		123° 35.321' W	41° 02.908' N
Drop Point	148		123° 36.044' W	41° 01.705' N
Drop Point	149		123° 37.089' W	41° 01.633' N
Drop Point	150		123° 33.283' W	40° 56.949' N
Drop Point	152		123° 31.531' W	40° 59.669' N
Drop Point	153		123° 30.911' W	40° 59.189' N
Drop Point	155		123° 30.054' W	40° 58.514' N
Drop Point	160		123° 29.117' W	40° 58.516' N
Drop Point	162		123° 28.188' W	40° 57.815' N
Drop Point	163		123° 29.693' W	40° 57.013' N
Drop Point	165		123° 27.142' W	40° 57.620' N
Drop Point	166		123° 26.847' W	40° 58.001' N
Drop Point	167		123° 26.969' W	40° 56.998' N
Drop Point	168		123° 28.177' W	40° 56.118' N
Drop Point	175		123° 26.768' W	40° 53.209' N
Drop Point	176		123° 35.185' W	40° 53.550' N
Drop Point	180		123° 31.957' W	40° 52.589' N
Drop Point	182		123° 31.344' W	40° 52.197' N
Drop Point	184		123° 31.124' W	40° 52.383' N
Drop Point	185		123° 28.765' W	40° 52.927' N
Drop Point	186		123° 29.260' W	40° 53.562' N
Drop Point	187		123° 29.730' W	40° 54.953' N
Drop Point	188		123° 31.977' W	40° 55.885' N
Drop Point	189		123° 28.888' W	40° 55.003' N
Drop Point	190		123° 32.307' W	40° 52.911' N
Drop Point	191		123° 28.352' W	40° 54.320' N
Drop Point	192		123° 31.027' W	40° 54.062' N
Drop Point	193		123° 30.951' W	40° 53.234' N
Drop Point	210		123° 38.521' W	40° 52.437' N
Drop Point	215		123° 40.644' W	40° 51.624' N
Drop Point	220		123° 41.213' W	40° 49.425' N
Drop Point	225		123° 41.256' W	40° 47.429' N
Drop Point	230		123° 39.996' W	40° 47.744' N
Drop Point	240		123° 36.706' W	40° 47.977' N
Drop Point	250		123° 33.861' W	40° 49.455' N
Drop Point	260		123° 36.983' W	40° 51.019' N
Drop Point	262		123° 36.827' W	40° 51.603' N
Drop Point	264		123° 37.161' W	40° 52.037' N
Helibase	Kneeland		123° 55.652' W	40° 43.128' N
Helibase	Winnerville		123° 55.227' W	40° 44.832' N
Helibase	Willow Creek Helibase		123° 38.121' W	40° 56.977' N
Helispot	1		123° 28.931' W	40° 58.420' N
Helispot	2		123° 31.978' W	41° 00.317' N
Helispot	20		123° 30.753' W	40° 55.252' N
Helispot	30		123° 35.800' W	40° 48.968' N
Incident Command Post	Willow Creek Veterans Park		123° 37.095' W	40° 56.653' N
Mobile Retardant Base			123° 35.028' W	40° 53.838' N
Mobile Weather Unit			123° 29.091' W	40° 53.520' N
Mobile Weather Unit			123° 41.474' W	40° 47.590' N
Mobile Weather Unit			123° 33.861' W	40° 51.868' N
Mobile Weather Unit			123° 32.636' W	41° 02.408' N
Mobile Weather Unit			123° 29.523' W	40° 53.090' N
Repeater	AC Link (Rotor Victor)		123° 40.309' W	40° 47.769' N
Repeater	NIFC CMD 11	NIFC CMD 11	123° 39.989' W	40° 46.786' N
Repeater	NIFC CMD 4	NIFC CMD 4	123° 40.149' W	40° 54.901' N
Repeater	NIFC CMD 57		123° 30.441' W	40° 58.472' N
Repeater	NIFC CMD 58		123° 27.070' W	40° 49.956' N
Restricted Water Source			123° 37.177' W	40° 59.975' N
Restricted Water Source			123° 31.954' W	40° 52.583' N
Restricted Water Source			123° 28.736' W	40° 54.534' N
Sling Site			123° 34.076' W	40° 58.897' N
Sling Site			123° 33.896' W	40° 58.981' N
Unimproved Landing Area			123° 40.131' W	40° 54.865' N
Unimproved Landing Area	1	Berry Summit Vista ULZ #1	123° 46.801' W	40° 54.130' N
Unimproved Landing Area	2	Burnt Ranch Old Mill/ Spike ULZ #2	123° 28.451' W	40° 48.400' N
Unimproved Landing Area	3	Big Branch Creek ULZ #3	123° 18.881' W	40° 46.750' N
Unimproved Landing Area	4	Big Bar ULZ #4	123° 15.401' W	40° 44.000' N
Unimproved Landing Area	5	Skunk Group Camp ULZ #5	123° 14.061' W	40° 44.200' N
Unimproved Landing Area	6	Helena HWY 299 ULZ #6	123° 07.701' W	40° 46.460' N
Unimproved Landing Area	7	Junction City Annex ULZ #7	123° 03.441' W	40° 43.640' N
Water Source			123° 36.355' W	40° 56.343' N
Water Source			123° 33.612' W	40° 53.929' N
Water Source			123° 41.848' W	40° 47.114' N
Water Source			123° 40.435' W	40° 54.181' N
Water Source			123° 31.457' W	40° 54.997' N
Water Source			123° 29.346' W	40° 51.446' N
Water Source			123° 28.249' W	40° 56.650' N
Water Source			123° 25.721' W	40° 59.988' N
Water Source			123° 36.134' W	41° 00.424' N
Water Source			123° 31.795' W	40° 58.757' N
Water Source			123° 36.362' W	41° 00.340' N
Water Source			123° 35.315' W	41° 02.910' N
Water Source			123° 29.473' W	40° 55.260' N
Water Source			123° 32.587' W	41° 00.322' N
Water Source			123° 23.430' W	40° 56.471' N
Water Source			123° 26.591' W	40° 53.995' N
Water Source			123° 20.720' W	40° 50.522' N
Water Source			123° 25.785' W	40° 54.504' N

**SRF Lightning Complex**  
 CA-SRF-000620  
 9/7/2022  
 41,406 acres  
 IR updated 9/6/2022

- ✕ Division Break
- ✕ Aviation Check Point
- ✕ Dip Site
- ✕ Mobile Retardant Base
- ✕ Helispot
- ✕ Helibase
- ✕ Sling Site
- ✕ Unimproved Landing Area
- ✕ Incident Command Post
- ✕ Drop Point
- ✕ Closure
- ✕ Camp
- ✕ Staging Area
- ✕ Mobile Weather Unit
- ✕ Internet Access
- ✕ Repeater
- ✕ Water Source
- ✕ Restricted Water Source
- ✕ Other
- ✕ Bridge
- ✕ Retardant Drop
- ✕ Aviation Route
- ✕ UAS Launch and Recovery Zone
- ✕ Temporary Flight Restriction
- ✕ Completed Dozer Line
- ✕ Completed Fuel Break
- ✕ Completed Hand Line
- ✕ Completed Road as Line
- ✕ Planned Burnout
- ✕ Planned Dozer Line
- ✕ Planned Hand Line
- ✕ Planned Road as Line
- ✕ Contained
- ✕ Uncontained
- ✕ Summit
- ✕ Tower
- ✕ Forest Administrative Boundaries
- ✕ County Line
- ✕ Powerline
- ✕ Fire Perimeter
- ✕ Aerial Hazard
- ✕ Horse Mtn Botanic Area



California Department of Forestry & Fire Protection









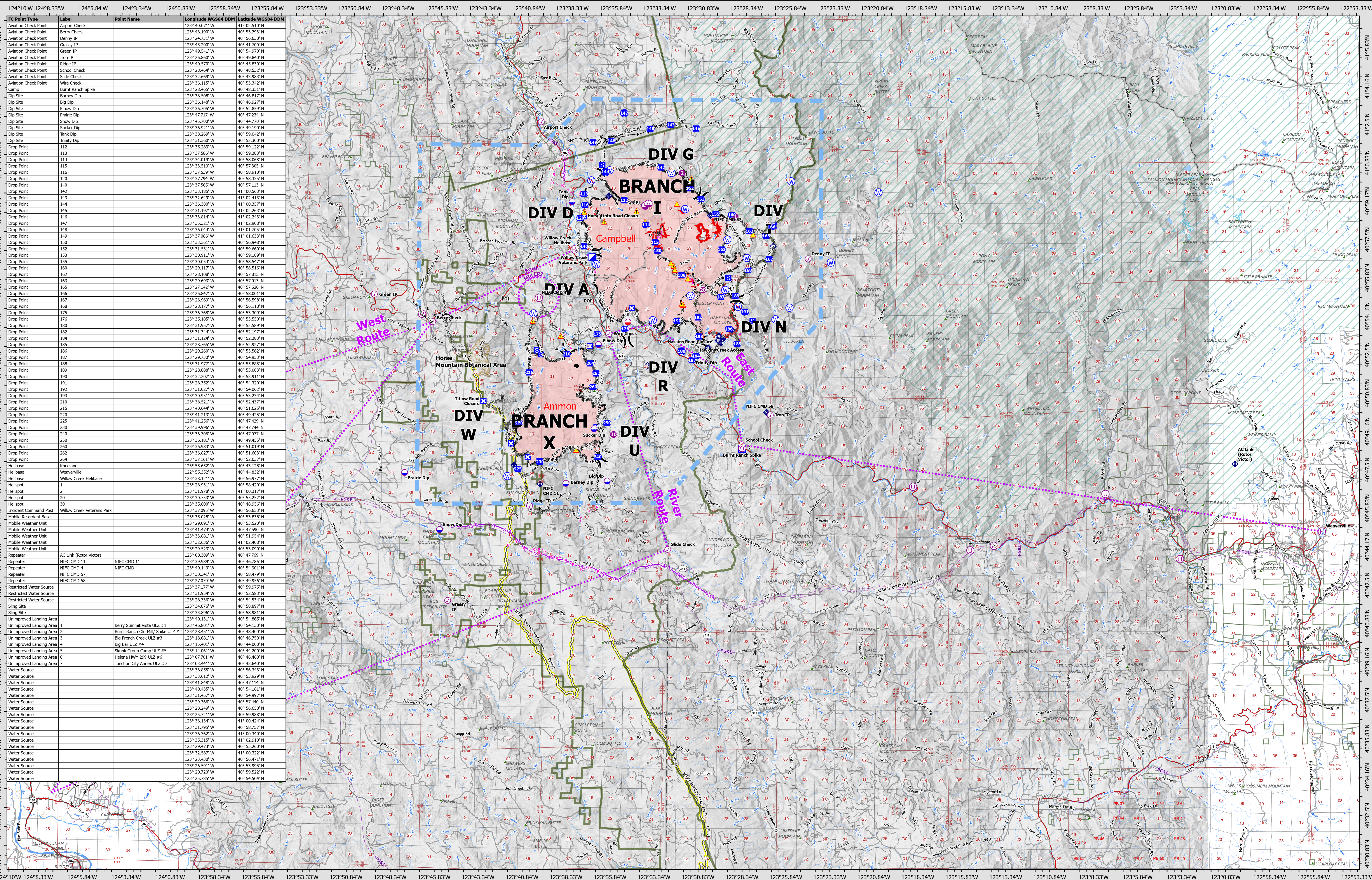
0 0.5 1 2 Miles

Datum: North American 1983



# AIR OPERATIONS - Regional

9/7/2022



**SRF Lightning Complex**  
 CA-SRF-000620  
 9/7/2022  
 41,406 acres  
 IR updated 9/6/2022

- ✕ Division Break
- ⊙ Aviation Check Point
- ⊙ Dip Site
- ⊙ Mobile Retardant Base
- ⊙ Helispot
- ⊙ Helibase
- ⊙ Sling Site
- ⊙ Unimproved Landing Area
- ⊙ Incident Command Post
- ⊙ Point
- ⊙ Closure
- ⊙ Camp
- ⊙ Staging Area
- ⊙ Mobile Weather Unit
- ⊙ Internet Access
- ⊙ Repeater
- ⊙ Water Source
- ⊙ Restricted Water Source
- ⊙ Other
- ⊙ Bridge
- ⊙ Retardant Drop
- ⊙ Aviation Route
- ⊙ UAS Launch and Recovery Zone
- ⊙ Temporary Flight Restriction
- ⊙ Completed Dozer Line
- ⊙ Completed Fuel Break
- ⊙ Completed Hand Line
- ⊙ Completed Road as Line
- ⊙ Planned Burnout
- ⊙ Planned Dozer Line
- ⊙ Planned Hand Line
- ⊙ Planned Road as Line
- ⊙ Contained
- ⊙ Uncontained
- ⊙ Summit
- ⊙ Tower
- ⊙ Forest Administrative Boundaries
- ⊙ County Line
- ⊙ Powerline
- ⊙ Fire Perimeter
- ⊙ Aerial Hazard
- ⊙ Horse Mtn Botanic Area

