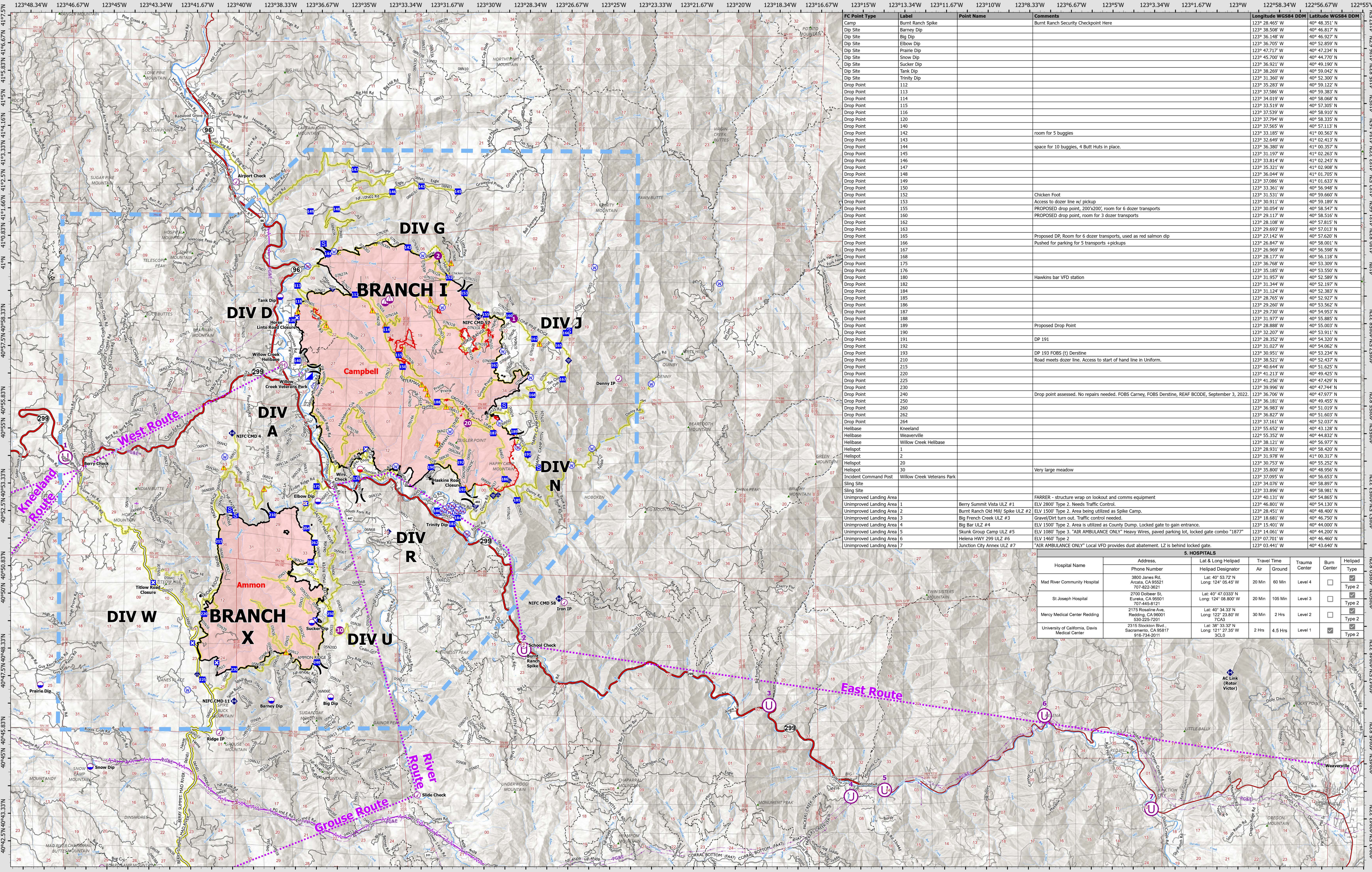


IWI AIR/GROUND TRANSPORTATION

9/7/2022



FC Point Type	Label	Point Name	Comments	Longitude WGS84 DDM	Latitude WGS84 DDM
Camp	Burnt Ranch Spike		Burnt Ranch Security Checkpoint Here	123° 28.465' W	40° 48.351' N
Dip Site	Barney Dip			123° 38.508' W	40° 46.817' N
Dip Site	Big Dip			123° 36.148' W	40° 46.927' N
Dip Site	Elbow Dip			123° 36.705' W	40° 52.859' N
Dip Site	Prairie Dip			123° 47.717' W	40° 47.234' N
Dip Site	Snow Dip			123° 45.700' W	40° 48.770' N
Dip Site	Sucker Dip			123° 36.921' W	40° 49.190' N
Dip Site	Tank Dip			123° 38.269' W	40° 59.042' N
Dip Site	Trinity Dip			123° 31.360' W	40° 52.300' N
Drop Point	112			123° 35.283' W	40° 59.122' N
Drop Point	113			123° 37.586' W	40° 59.383' N
Drop Point	114			123° 34.019' W	40° 58.068' N
Drop Point	116			123° 33.519' W	40° 57.309' N
Drop Point	120			123° 37.539' W	40° 58.910' N
Drop Point	140			123° 37.794' W	40° 58.335' N
Drop Point	142		room for 5 buggies	123° 37.565' W	40° 57.113' N
Drop Point	143			123° 33.185' W	41° 00.563' N
Drop Point	144		space for 10 buggies, 4 Butt Huts in place.	123° 32.649' W	41° 02.413' N
Drop Point	145			123° 36.380' W	41° 00.357' N
Drop Point	146			123° 31.197' W	41° 02.263' N
Drop Point	147			123° 33.814' W	41° 02.247' N
Drop Point	148			123° 35.321' W	41° 02.908' N
Drop Point	149			123° 36.044' W	41° 01.705' N
Drop Point	150			123° 37.086' W	41° 01.633' N
Drop Point	152	Chicken Foot		123° 33.361' W	40° 56.948' N
Drop Point	153			123° 31.531' W	40° 59.660' N
Drop Point	155	Access to dozer line w/ pickup		123° 30.911' W	40° 59.189' N
Drop Point	160	PROPOSED drop point, 200x200', room for 6 dozer transports		123° 39.654' W	40° 57.309' N
Drop Point	162	PROPOSED drop point, room for 3 dozer transports		123° 29.117' W	40° 58.516' N
Drop Point	163			123° 28.108' W	40° 57.815' N
Drop Point	165			123° 29.693' W	40° 57.013' N
Drop Point	166	Proposed DP, Room for 6 dozer transports, used as red salmon dip		123° 27.142' W	40° 57.620' N
Drop Point	167	Pushed for parking for 5 transports +pickups		123° 26.847' W	40° 58.001' N
Drop Point	168			123° 26.969' W	40° 56.598' N
Drop Point	175			123° 28.177' W	40° 56.118' N
Drop Point	176			123° 36.768' W	40° 54.953' N
Drop Point	180	Hawkins bar VFD station		123° 35.185' W	40° 53.550' N
Drop Point	182			123° 31.957' W	40° 52.589' N
Drop Point	184			123° 31.344' W	40° 52.197' N
Drop Point	185			123° 31.124' W	40° 52.383' N
Drop Point	186			123° 28.765' W	40° 52.927' N
Drop Point	187			123° 29.260' W	40° 53.562' N
Drop Point	188			123° 29.730' W	40° 54.953' N
Drop Point	189			123° 31.937' W	40° 53.887' N
Drop Point	190	Proposed Drop Point		123° 28.888' W	40° 55.003' N
Drop Point	191	DP 191		123° 32.207' W	40° 53.911' N
Drop Point	192	DP 193 FOBS (t) Derstine		123° 28.352' W	40° 54.320' N
Drop Point	193	Road meets dozer line, Access to start of hand line in Uniform.		123° 31.027' W	40° 54.062' N
Drop Point	210	DP 193 FOBS (t) Derstine		123° 30.951' W	40° 53.234' N
Drop Point	215	Road meets dozer line, Access to start of hand line in Uniform.		123° 28.521' W	40° 52.437' N
Drop Point	220			123° 40.644' W	40° 51.603' N
Drop Point	225			123° 41.213' W	40° 49.429' N
Drop Point	230			123° 41.256' W	40° 47.429' N
Drop Point	240	Drop point assessed. No repairs needed. FOBS Carney, FOBS Derstine, REAF BCODE, September 3, 2022.		123° 39.996' W	40° 47.744' N
Drop Point	250			123° 36.706' W	40° 47.977' N
Drop Point	260			123° 36.181' W	40° 49.455' N
Drop Point	262			123° 36.983' W	40° 51.019' N
Drop Point	264			123° 36.827' W	40° 51.603' N
Helibase	Kneeland			123° 36.161' W	40° 49.327' N
Helibase	Weaverville			123° 55.652' W	40° 43.128' N
Helibase	Willow Creek Helibase			123° 55.352' W	40° 44.832' N
Helispot	2			123° 38.121' W	40° 56.977' N
Helispot	20			123° 28.931' W	40° 58.420' N
Helispot	2			123° 31.978' W	41° 00.317' N
Helispot	20			123° 30.753' W	40° 55.252' N
Helispot	30			123° 35.806' W	40° 48.955' N
Incident Command Post	Willow Creek Veterans Park		Very large meadow	123° 37.095' W	40° 56.653' N
Sling Site	Willow Creek Veterans Park			123° 34.076' W	40° 58.897' N
Unimproved Landing Area	1		FARRR - structure wrap on lookout and comms equipment	123° 33.898' W	40° 58.981' N
Unimproved Landing Area	2	Berry Summit Vista ULZ #1		123° 40.131' W	40° 54.865' N
Unimproved Landing Area	2	ELV 1500' Type 2. Needs Traffic Control.		123° 46.801' W	40° 54.130' N
Unimproved Landing Area	3	Burnt Ranch Old Mill Spike ULZ #2		123° 28.451' W	40° 48.400' N
Unimproved Landing Area	3	Big French Creek ULZ #3	Gravel/Dirt turn out. Traffic control needed.	123° 18.681' W	40° 46.750' N
Unimproved Landing Area	4	Big Bar ULZ #4	ELV 1500' Type 2. Area is utilized as County Dumps. Locked gate to gain entrance.	123° 15.401' W	40° 44.000' N
Unimproved Landing Area	5	Skunk Group Camp ULZ #5	ELV 1080' Type 3. "AIR AMBULANCE ONLY" Heavy Wires, paved parking lot, locked gate combo "1877"	123° 14.061' W	40° 44.200' N
Unimproved Landing Area	6	Helena HWY 299 ULZ #6	ELV 1460' Type 2	123° 07.701' W	40° 46.460' N
Unimproved Landing Area	7	Junction City Annex ULZ #7	"AIR AMBULANCE ONLY" Local VFD provides dust abatement. LZ is behind locked gate.	123° 03.441' W	40° 43.640' N

5. HOSPITALS

Hospital Name	Address	Phone Number	Lat & Long Helipad Designator	Travel Time	Trauma Center	Burn Center	Helipad Type
Mad River Community Hospital	3800 Jones Rd, Arcata, CA 95521	707-822-3621	Lat: 40° 53.72' N Long: 124° 05.45' W	20 Min	60 Min	Level 4	Type 2
St Joseph Hospital	2700 Dobbler St, Eureka, CA 95501	707-445-6121	Lat: 40° 47.0333' N Long: 124° 08.800' W	20 Min	105 Min	Level 3	Type 2
Mercy Medical Center Redding	2175 Rosaline Ave, Redding, CA 96001	530-226-7200	Lat: 40° 34.33' N Long: 122° 23.80' W	30 Min	2 Hrs	Level 2	Type 2
University of California, Davis Medical Center	2315 Stockton Blvd, Sacramento, CA 95817	916-734-2011	Lat: 38° 33.32' N Long: 121° 27.35' W	2 Hrs	4.5 Hrs	Level 1	Type 2

SRF Lightning Complex
CA-SRF-000620
9/7/2022
41,406 acres
IR updated 9/6/2022

- Division Break
- Aviation Check Point
- Dip Site
- Mobile Retardant Base
- Helispot
- Helibase
- Sling Site
- Unimproved Landing Area
- Incident Command Post
- Drop Point
- Closure
- Camp
- Staging Area
- Mobile Weather Unit
- Internet Access
- Repeater
- Hazard
- Water Source
- Restricted Water Source
- Bridge
- Aviation Route
- Temporary Flight Restriction
- Powerline
- Aerial Hazard
- Dirt Roads
- Gravel Roads
- Highways
- Local Connectors
- Local Roads
- Trails
- Highlighted Routes
- Contained
- Uncontained
- Fire Perimeter

CAIRM15 GIS Updated: 9/6/2022 2:30