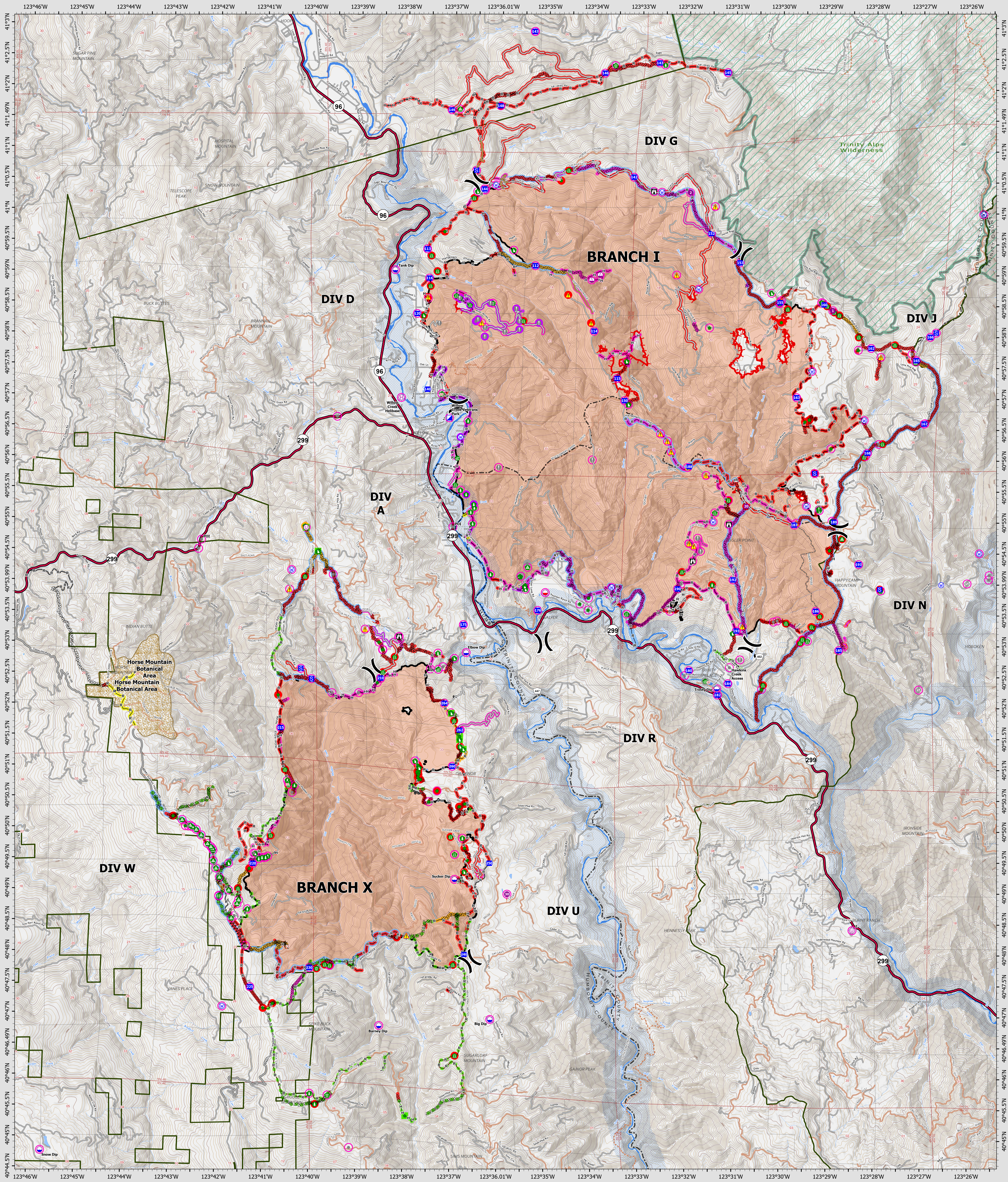


Suppression Repair Overview

9/7/2022



SRF Lightning Complex
 CA-SRF-000620
 9/7/2022
 41,406 acres
 IR updated 9/6/2022

<p>Repair Status Point</p> <ul style="list-style-type: none"> ● In Use - Fire Management ● Needs Assessment ● Repair Needed ● In Progress ● Completed - Inspected ● No Repair Needed ● Other - See Comments 	<p>Repair Status Line</p> <ul style="list-style-type: none"> — In Use - Fire Management — Needs Assessment — Repair Needed — In Progress — Completed - Ready for Inspection — Completed - Inspected — No Repair Needed — Other - See Comments — Contained — Uncountained — Dip Site — Mobile Retardant Base 	<ul style="list-style-type: none"> ● Helibase ● Sling Site ● Unimproved Landing Area ● Incident Command Post ● Drop Point ● Staging Area ● Lockout ● Value at Risk ● Other ● Gate ● Bridge ● Water Development or Draft Site 	<ul style="list-style-type: none"> ● Structure Wrap ● Stream Crossing ● Road Repair ● Resource Location ● Repair Point ● Landing or Log Deck ● Hazard Tree ● Fence - Cut/Damaged ● Dozer Push ● Culvert ● Clean Up Area ● Hazard ● Water Source 	<ul style="list-style-type: none"> — Completed Dozer Line — Completed Fuel Line — Completed Hand Line — Completed Road as Line — Access or Improved Road — Other — Repair Line — Road Repair — Retardant Drop — Future Strategic Fireline — Wildfire Daily Fire Perimeter — Wild & Scenic Rivers — Wilderness
---	--	---	---	--

Datum: North American 1983
GIS Updated: 9/7/2022 05:39