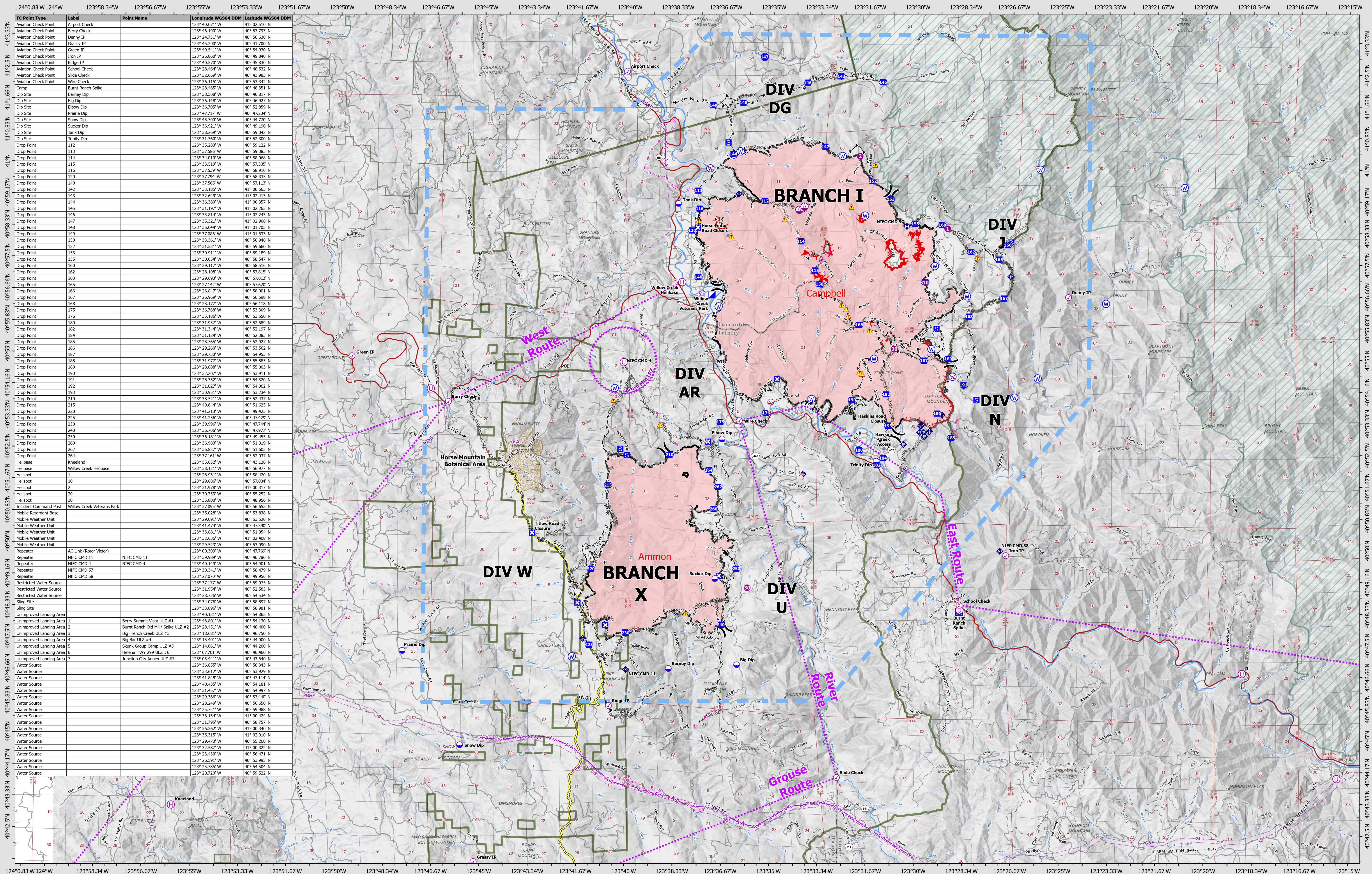


AIR OPERATIONS - TFR

9/8/2022



SRF Lightning Complex
 CA-SRF-000620
 9/8/2022
 41,406 acres
 IR updated 9/6/2022

- ✕ Division Break
- ⬢ Aviation Check Point
- ⬢ Dip Site
- ⬢ Mobile Retardant Base
- ⬢ Helispot
- ⬢ Helibase
- ⬢ Sling Site
- ⬢ Unimproved Landing Area
- ⬢ Incident Command Post
- ⬢ Drop Point
- ⬢ Closure
- ⬢ Camp
- ⬢ Staging Area
- ⬢ Hot Spot - Spot Fire
- ⬢ Mobile Weather Unit
- ⬢ Internet Access
- ⬢ Repeater
- ⬢ Hazard
- ⬢ Water Source
- ⬢ Restricted Water Source
- ⬢ Other
- ⬢ Bridge
- ⬢ Retardant Drop
- ⬢ Aviation Route
- ⬢ UAS Launch and Recovery Zone
- ⬢ Temporary Flight Restriction
- ⬢ Completed Dozer Line
- ⬢ Completed Fuel Break
- ⬢ Completed Hand Line
- ⬢ Completed Road as Line
- ⬢ Planned Hand Line
- ⬢ Planned Road as Line
- ⬢ Contained
- ⬢ Uncontained
- ⬢ Summit
- ⬢ Tower
- ⬢ Forest Administrative Boundaries
- ⬢ County Line
- ⬢ Powerline
- ⬢ Fire Perimeter
- ⬢ Aerial Hazard
- ⬢ Horse Mtn Botanic Area

Logos for UAS, California Department of Forestry and Fire Protection, and other agencies. Includes a QR code and a scale bar.