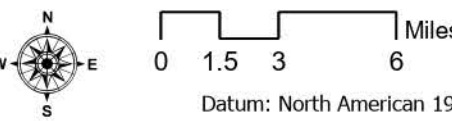


SRF Lightning Complex

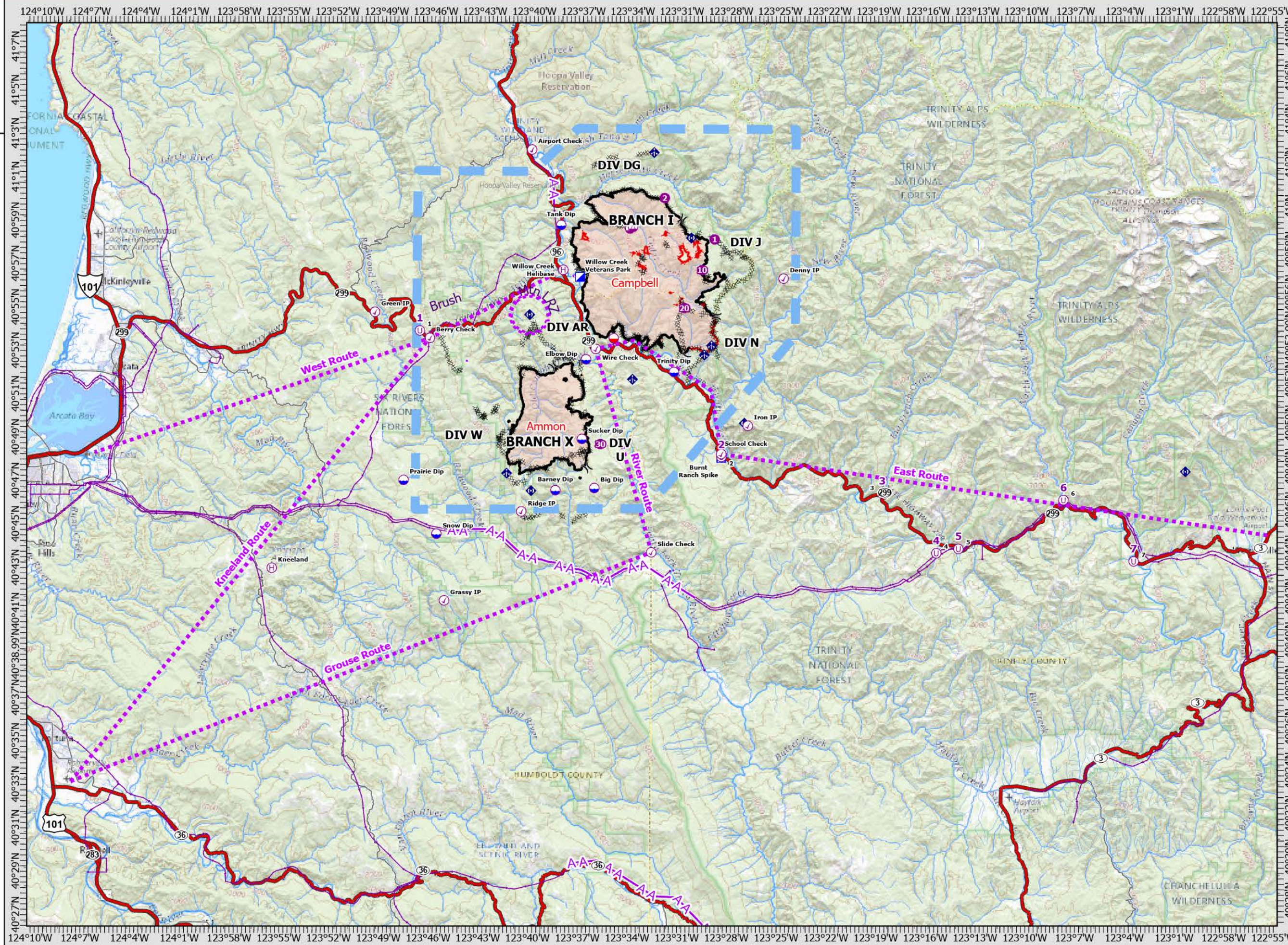
CA-SRF-000620
9/8/2022

41,406 acres
IR updated 9/6/2022

- Aviation Check Point
- Dip Site
- Mobile Retardant Base
- Helispot
- Helibase
- Sling Site
- Unimproved Landing Area
- Division Break
- Incident Command Post
- Camp
- Mobile Weather Unit
- Repeater
- Completed Dozer Line
- Aviation Route
- UAS Launch and Recovery Zone
- Temporary Flight Restriction
- Wildfire Daily Fire Perimeter
- Contained
- Uncontained
- Aerial Hazard
- Powerlines
- Highways



Author Name Updated: 9/7/2022 2104



| Point Type | Name | LAT WGS84 | LONG WGS84 | Point Type | Name | LAT WGS84 | LONG WGS84 |
|----------------|---------------|---------------|----------------|------------|-----------------|---------------|----------------|
| Aviation Check | Airport Check | 41° 02.510' N | 123° 40.071' W | Drop Point | 168 | 40° 56.118' N | 123° 28.177' W |
| Aviation Check | Berry Check | 40° 53.793' N | 123° 46.190' W | Drop Point | 175 | 40° 53.309' N | 123° 36.768' W |
| Aviation Check | Denny IP | 40° 56.630' N | 123° 24.731' W | Drop Point | 176 | 40° 53.550' N | 123° 35.185' W |
| Aviation Check | Grassy IP | 40° 41.700' N | 123° 45.200' W | Drop Point | 180 | 40° 52.589' N | 123° 31.957' W |
| Aviation Check | Green IP | 40° 54.970' N | 123° 49.541' W | Drop Point | 182 | 40° 52.197' N | 123° 31.344' W |
| Aviation Check | Iron IP | 40° 49.840' N | 123° 26.860' W | Drop Point | 184 | 40° 52.383' N | 123° 31.124' W |
| Aviation Check | Ridge IP | 40° 45.830' N | 123° 40.570' W | Drop Point | 185 | 40° 52.927' N | 123° 28.765' W |
| Aviation Check | School Check | 40° 48.532' N | 123° 28.464' W | Drop Point | 186 | 40° 53.562' N | 123° 29.260' W |
| Aviation Check | Slide Check | 40° 43.983' N | 123° 32.669' W | Drop Point | 187 | 40° 54.953' N | 123° 29.730' W |
| Aviation Check | Wire Check | 40° 53.342' N | 123° 36.115' W | Drop Point | 188 | 40° 55.885' N | 123° 31.977' W |
| Camp | Burnt Ranch | 40° 48.351' N | 123° 28.465' W | Drop Point | 189 | 40° 55.003' N | 123° 28.888' W |
| Dip Site | Barney Dip | 40° 46.817' N | 123° 38.508' W | Drop Point | 190 | 40° 53.911' N | 123° 32.207' W |
| Dip Site | Big Dip | 40° 46.927' N | 123° 36.148' W | Drop Point | 191 | 40° 54.320' N | 123° 28.352' W |
| Dip Site | Clear Dip | 40° 48.910' N | 123° 41.821' W | Drop Point | 192 | 40° 54.062' N | 123° 31.027' W |
| Dip Site | Elbow Dip | 40° 52.859' N | 123° 36.705' W | Drop Point | 193 | 40° 53.234' N | 123° 30.951' W |
| Dip Site | Prairie Dip | 40° 47.234' N | 123° 47.717' W | Drop Point | 210 | 40° 52.437' N | 123° 38.521' W |
| Dip Site | Snow Dip | 40° 44.770' N | 123° 45.700' W | Drop Point | 215 | 40° 51.625' N | 123° 40.644' W |
| Dip Site | Sucker Dip | 40° 49.190' N | 123° 36.921' W | Drop Point | 220 | 40° 49.425' N | 123° 41.213' W |
| Dip Site | Tank Dip | 40° 59.042' N | 123° 38.269' W | Drop Point | 225 | 40° 47.429' N | 123° 41.256' W |
| Dip Site | Trinity Dip | 40° 52.300' N | 123° 31.360' W | Drop Point | 230 | 40° 47.744' N | 123° 39.996' W |
| Drop Point | | 40° 52.937' N | 123° 29.730' W | Drop Point | 240 | 40° 47.977' N | 123° 36.706' W |
| Drop Point | | 40° 59.189' N | 123° 30.911' W | Drop Point | 250 | 40° 49.455' N | 123° 36.181' W |
| Drop Point | | 40° 58.001' N | 123° 26.847' W | Drop Point | 260 | 40° 51.019' N | 123° 36.983' W |
| Drop Point | | 40° 53.359' N | 123° 29.897' W | Drop Point | 262 | 40° 51.603' N | 123° 36.827' W |
| Drop Point | | 40° 53.220' N | 123° 29.538' W | Drop Point | 264 | 40° 52.037' N | 123° 37.161' W |
| Drop Point | 112 | 40° 59.122' N | 123° 35.283' W | Helibase | Kneeland | 40° 43.128' N | 123° 55.652' W |
| Drop Point | 113 | 40° 59.383' N | 123° 37.586' W | Helibase | Willow Creek | 40° 56.977' N | 123° 38.121' W |
| Drop Point | 114 | 40° 58.068' N | 123° 34.019' W | Helispot | 1 | 40° 58.420' N | 123° 28.931' W |
| Drop Point | 115 | 40° 57.305' N | 123° 33.519' W | Helispot | 10 | 40° 57.004' N | 123° 29.686' W |
| Drop Point | 116 | 40° 58.910' N | 123° 37.539' W | Helispot | 2 | 41° 00.317' N | 123° 31.978' W |
| Drop Point | 120 | 40° 58.335' N | 123° 37.794' W | Helispot | 20 | 40° 55.252' N | 123° 30.753' W |
| Drop Point | 140 | 40° 57.113' N | 123° 37.565' W | Helispot | 30 | 40° 48.956' N | 123° 35.800' W |
| Drop Point | 142 | 41° 00.563' N | 123° 33.185' W | Incident | Willow Creek | 40° 56.653' N | 123° 37.095' W |
| Drop Point | 143 | 41° 02.413' N | 123° 32.649' W | Repeater | AC Link (Rotor) | 40° 47.769' N | 123° 00.309' W |
| Drop Point | 144 | 41° 00.357' N | 123° 36.380' W | Repeater | NIFC CMD 11 | 40° 46.786' N | 123° 39.989' W |
| Drop Point | 145 | 41° 02.263' N | 123° 31.197' W | Repeater | NIFC CMD 4 | 40° 54.901' N | 123° 40.149' W |
| Drop Point | 146 | 41° 02.243' N | 123° 33.814' W | Repeater | NIFC CMD 57 | 40° 58.479' N | 123° 30.341' W |
| Drop Point | 147 | 41° 02.908' N | 123° 35.321' W | Repeater | NIFC CMD 58 | 40° 49.956' N | 123° 27.070' W |
| Drop Point | 148 | 41° 01.705' N | 123° 36.044' W | Sling Site | | 40° 58.897' N | 123° 34.076' W |
| Drop Point | 149 | 41° 01.633' N | 123° 37.086' W | Sling Site | | 40° 58.981' N | 123° 33.896' W |
| Drop Point | 150 | 40° 56.948' N | 123° 33.361' W | Unimproved | | 40° 54.865' N | 123° 40.131' W |
| Drop Point | 152 | 40° 59.660' N | 123° 31.531' W | Unimproved | | 40° 57.393' N | 123° 29.175' W |
| Drop Point | 153 | 40° 59.189' N | 123° 30.911' W | Unimproved | 1 | 40° 54.130' N | 123° 46.801' W |
| Drop Point | 155 | 40° 58.547' N | 123° 30.054' W | Unimproved | 2 | 40° 48.400' N | 123° 28.451' W |
| Drop Point | 160 | 40° 58.516' N | 123° 29.117' W | Unimproved | 3 | 40° 46.750' N | 123° 18.681' W |
| Drop Point | 162 | 40° 57.815' N | 123° 28.108' W | Unimproved | 4 | 40° 44.000' N | 123° 15.401' W |
| Drop Point | 163 | 40° 57.013' N | 123° 29.693' W | Unimproved | 5 | 40° 44.200' N | 123° 14.061' W |
| Drop Point | 165 | 40° 57.620' N | 123° 27.142' W | Unimproved | 6 | 40° 46.460' N | 123° 07.701' W |
| Drop Point | 166 | 40° 58.001' N | 123° 26.847' W | Unimproved | 7 | 40° 43.640' N | 123° 03.441' W |
| Drop Point | 167 | 40° 56.598' N | 123° 26.969' W | | | | |

| Frequencies | TX | Tone | RX | Tone | AM / FM |
|---------------------------|-------------|------------|----------|------------|---------|
| Command | See ICS 205 | | | | FM |
| AIR / GROUND - TACTICAL | 164.8625 | 0.0000 | 164.8625 | 0.0000 | FM |
| AIR/AIR ROTARY WING | 124.5750 | | 124.5750 | | AM |
| AIR / GROUND COMMAND | 172.5500 | | 172.5500 | | FM |
| AIR TACTICS | 167.8125 | | 167.8125 | | FM |
| A/G 43 Initial Attack | 167.6000 | | 167.6000 | | FM |
| CDF A/G 3 Initial Attack | 159.3675 | 192.8 (16) | 159.3675 | 192.8 (16) | FM |
| MRB DECK | 168.3500 | 136.5 (4) | 168.3500 | 136.5 (4) | FM |
| DECK | 163.1000 | | 163.1000 | | FM |
| CALCORD - MEDICAL | 156.0750 | 156.7 (6) | 156.0750 | 156.7 (6) | FM |
| AIRGUARD - Emergency Only | 168.6250 | 110.9 (1) | 168.6250 | | FM |

