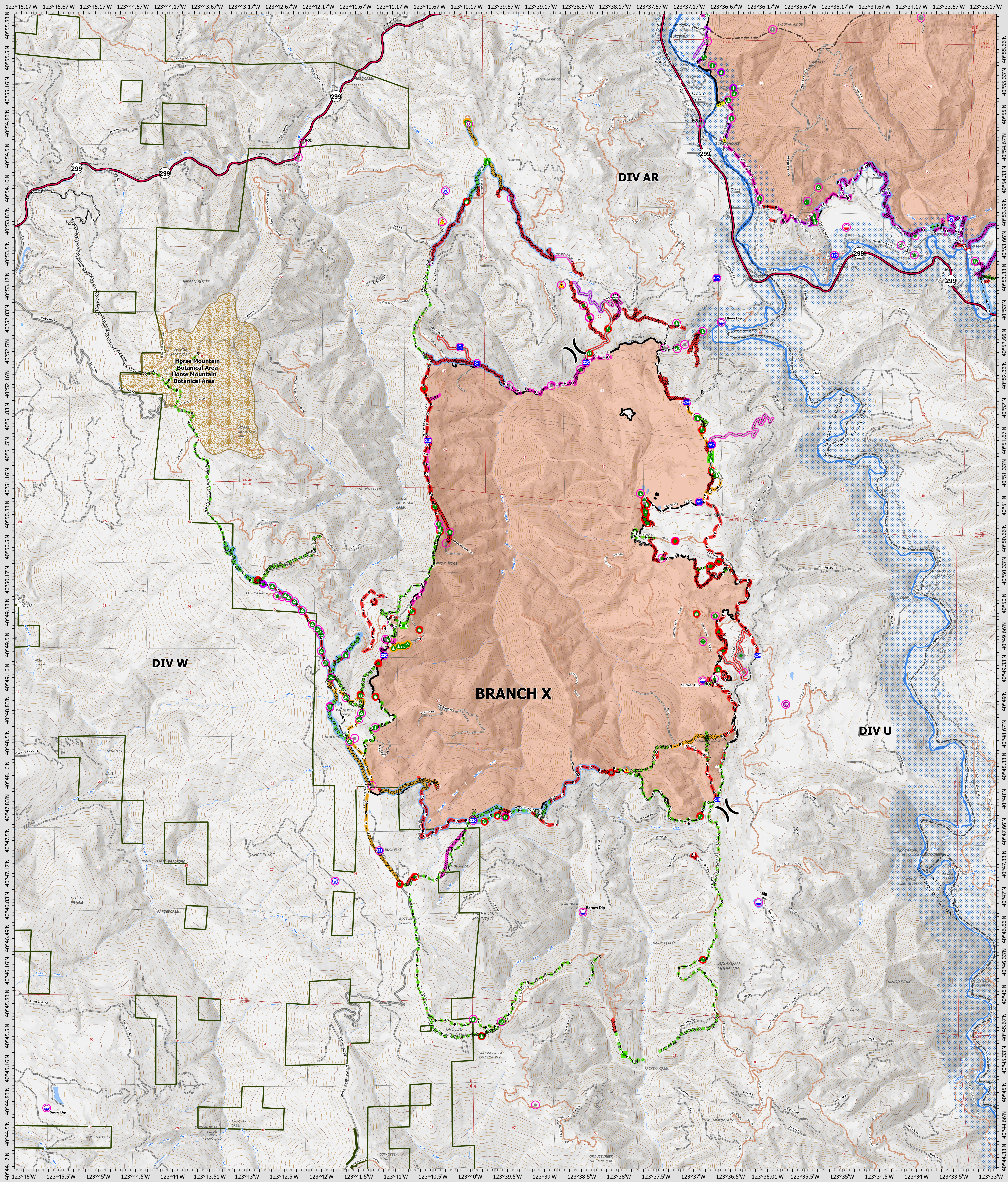


Suppression Repair Branch X

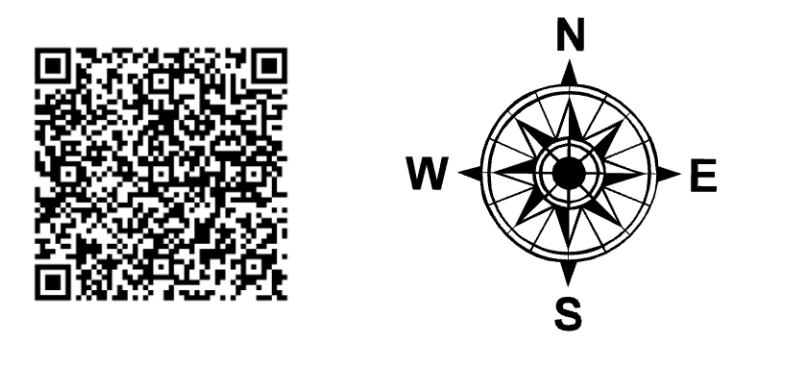
9/8/2022



SRF Lightning Complex
 CA-SRF-000620
 9/8/2022
 41,502 acres
 IR updated 9/8/2022

- | | | | |
|---|---|--|---|
| <p>Repair Status Point</p> <ul style="list-style-type: none"> ○ In Use - Fire Management ○ Needs Assessment ○ Repair Needed ○ In Progress ○ Completed - Inspected ○ No Repair Needed ○ Other - See Comments | <p>Repair Status Line</p> <ul style="list-style-type: none"> — In Use - Fire Management — Needs Assessment — Repair Needed — In Progress — Completed - Ready for Inspection — Completed - Inspected — No Repair Needed — Other - See Comments — Contained | <ul style="list-style-type: none"> ○ Dip Site ○ Mobile Retardant Base ○ Hillspot ○ Unimproved Landing Area ○ Repair Point ○ Division Break ○ Drop Point ○ Staging Area ○ Lockout ○ Value at Risk ○ Other ○ Water Development or Draft Site | <ul style="list-style-type: none"> ○ Structure Crossing ○ Stream Wrapping ○ Road Repair ○ Repair Point ○ Landing or Log Deck ○ Hazard Tree ○ Dozer Push ○ Culvert ○ Value at Risk ○ Hazard ○ Water Source |
|---|---|--|---|

- | |
|---|
| <ul style="list-style-type: none"> — Completed Dozer Line — Completed Fuel Break — Completed Hand Line — Completed Road as Line — Access or Improved Road — Other — Future Strategic Fireline — Wildfire Daily Fire Perimeter — Wild & Scenic Rivers |
|---|



0 0.5 1 2 Miles
 Datum: North American 1983
 GIS Updated: 9/8/2022 0541