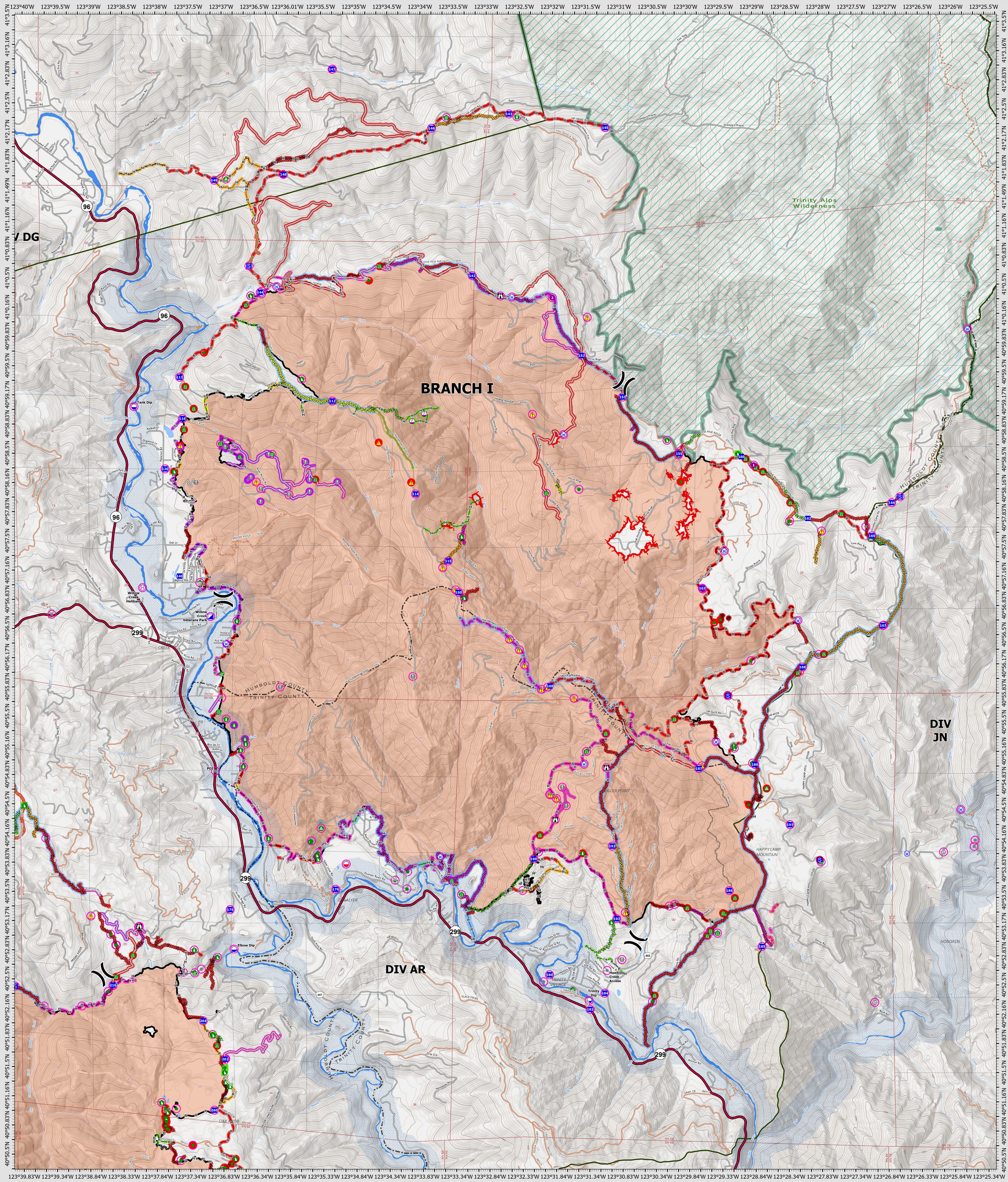


Suppression Repair Branch I

9/9/2022



SRF Lightning Complex
 CA-SRF-000620
 9/9/2022
 41,502 acres
 IR updated 9/8/2022

<p>Repair Status Point</p> <ul style="list-style-type: none"> ○ In Use - Fire Management ○ Needs Assessment ○ Repair Needed ○ Completed - Inspected ○ No Repair Needed ○ Other - See Comments 	<p>Repair Status Line</p> <ul style="list-style-type: none"> — In Use - Fire Management — Repair Needed — In Progress — Completed - Ready for Inspection — Completed - Inspected — No Repair Needed — Other - See Comments Contained Uncontained ○ Dip Site ○ Mobile Retardant Base 	<ul style="list-style-type: none"> ● Helipoint ● Helibase ● Sling Site ● Unimproved Landing Area ● Division Break ● Incident Command Post ● Drop Point ● Staging Area ● Lookout ● Value at Risk ● Other ● Gate ● Bridge 	<ul style="list-style-type: none"> ● Water Development or Draft Site ● Structure Wrap ● Road Repair ● Resource Location ● Repair Point ● Landing or Log Deck ● Hazard Tree ● Fence - Cut/Damaged ● Dozer Push ● Culvert ● Clean Up Area ● Hazard ● Water Source 	<ul style="list-style-type: none"> — Completed Dozer Line — Completed Hand Line — Completed Road as Line — Access or Improved Road — Other — Repair Line — Retardant Drop — Future Strategic Fireline — Wildfire Daily Fire Perimeter — Wild & Scenic Rivers — Wilderness
---	---	--	---	--

Datum: North American 1983
GIS Updated: 9/8/2022 2:19