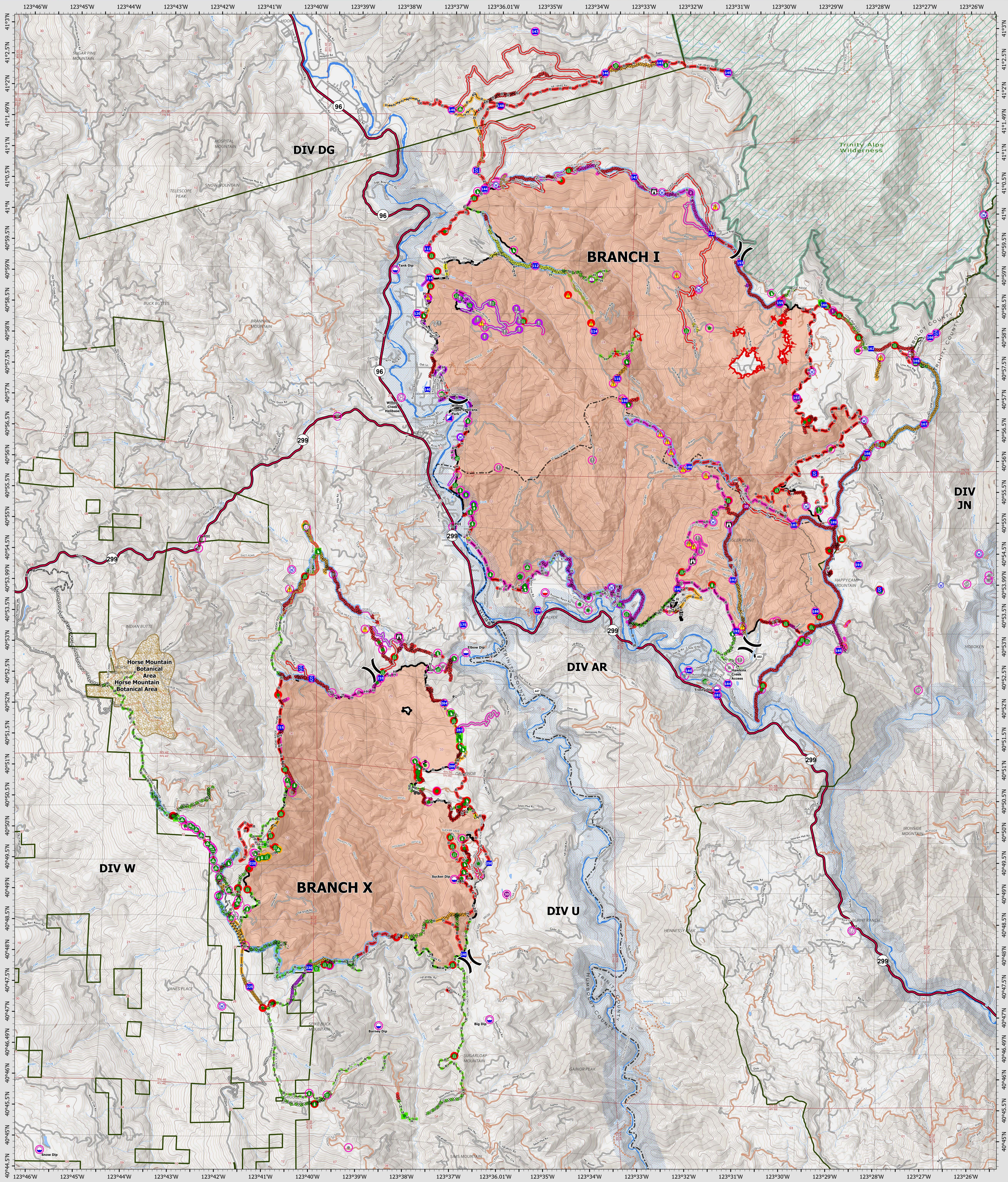


Suppression Repair Overview

9/9/2022



SRF Lightning Complex
 CA-SRF-000620
 9/9/2022
 41,502 acres
 IR updated 9/8/2022

<p>Repair Status Point</p> <ul style="list-style-type: none"> ● In Use - Fire Management ● Needs Assessment ● Repair Needed ● In Progress ● Completed - Inspected ● No Repair Needed ● Other - See Comments 	<p>Repair Status Line</p> <ul style="list-style-type: none"> — In Use - Fire Management — Needs Assessment — Repair Needed — In Progress — Completed - Ready for Inspection — Completed - Inspected — Other - See Comments Contained Uncontained ○ Dip Site ○ Mobile Retardant Base 	<ul style="list-style-type: none"> ● Helibase ○ Sling Site ○ Unimproved Landing Area X Incident Command Post ■ Drop Point ■ Staging Area ■ Lookout ■ Value at Risk ■ Other ■ Gate ■ Bridge ■ Water Development or Draft Site 	<ul style="list-style-type: none"> ● Structure Wrap ● Stream Crossing ● Road Repair ● Resource Location ● Repair Point ● Landing or Log Deck ● Hazard Tree ● Fence - Out/Damaged ● Lookout ● Culvert ● Clean Up Area ● Hazard ● Water Source 	<ul style="list-style-type: none"> — Completed Dozer Line — Completed Fuel Break — Completed Hand Line — Completed Road as Line — Access or Improved Road — Other — Repair Line — Road Repair — Retardant Drop — Future Strategic Fireline — Wildfire Daily Fire Perimeter — Wild & Scenic Rivers — Wilderness
---	---	--	--	---

Datum: North American 1983
GIS Updated: 9/8/2022 2:16