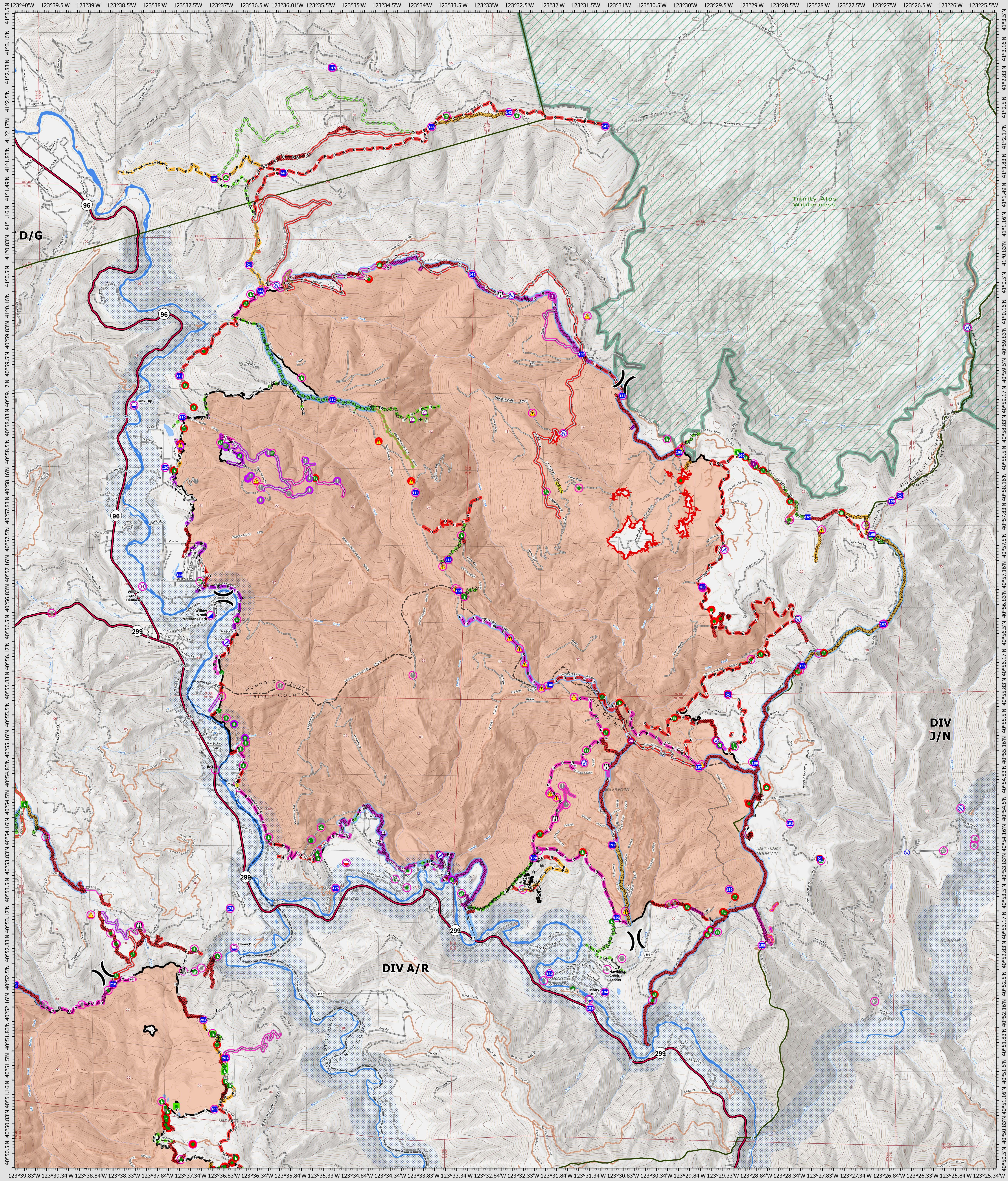


Suppression Repair Campbell

9/10/2022



SRF Lightning Complex
 CA-SRF-000620
 9/10/2022
 41,540 acres
 IR updated 9/8/2022

| Repair Status Point | Repair Status Line | Other Symbols | Other Symbols |
|--------------------------|----------------------------------|-------------------------|-------------------------------|
| In Use - Fire Management | In Use - Fire Management | Helipoint | Structure Wrap |
| Needs Assessment | Repair Needed | Helibase | Road Repair |
| Repair Needed | In Progress | Sling Site | Retardant in Avoidance Area |
| Completed - Inspected | Completed - Ready for Inspection | Unimproved Landing Area | Resource Location |
| No Repair Needed | Completed - Inspected | Division Break | Repair Point |
| Other - See Comments | Other - See Comments | Incident Command Post | Landing or Log Deck |
| | | Drop Point | Hazard Tree |
| | | Staging Area | Fence - Cut/Damaged |
| | | Lookout | Dozer Push |
| | | Value at Risk | Culvert |
| | | Other | Clean Up Area |
| Contained | | Gate | Hazard |
| Uncountained | | Dip Site | Water Source |
| Bridge | | Mobile Retardant Base | |
| | | | Completed Dozer Line |
| | | | Completed Hand Line |
| | | | Completed Road as Line |
| | | | Access or Improved Road |
| | | | Other |
| | | | Repair Line |
| | | | Road Repair |
| | | | Retardant Drop |
| | | | Future Strategic Fireline |
| | | | Wildfire Daily Fire Perimeter |
| | | | Wild & Scenic Rivers |
| | | | Wilderness |



0 0.5 1 2 Miles
 Datum: North American 1983
 GIS Updated: 9/9/2022 2054