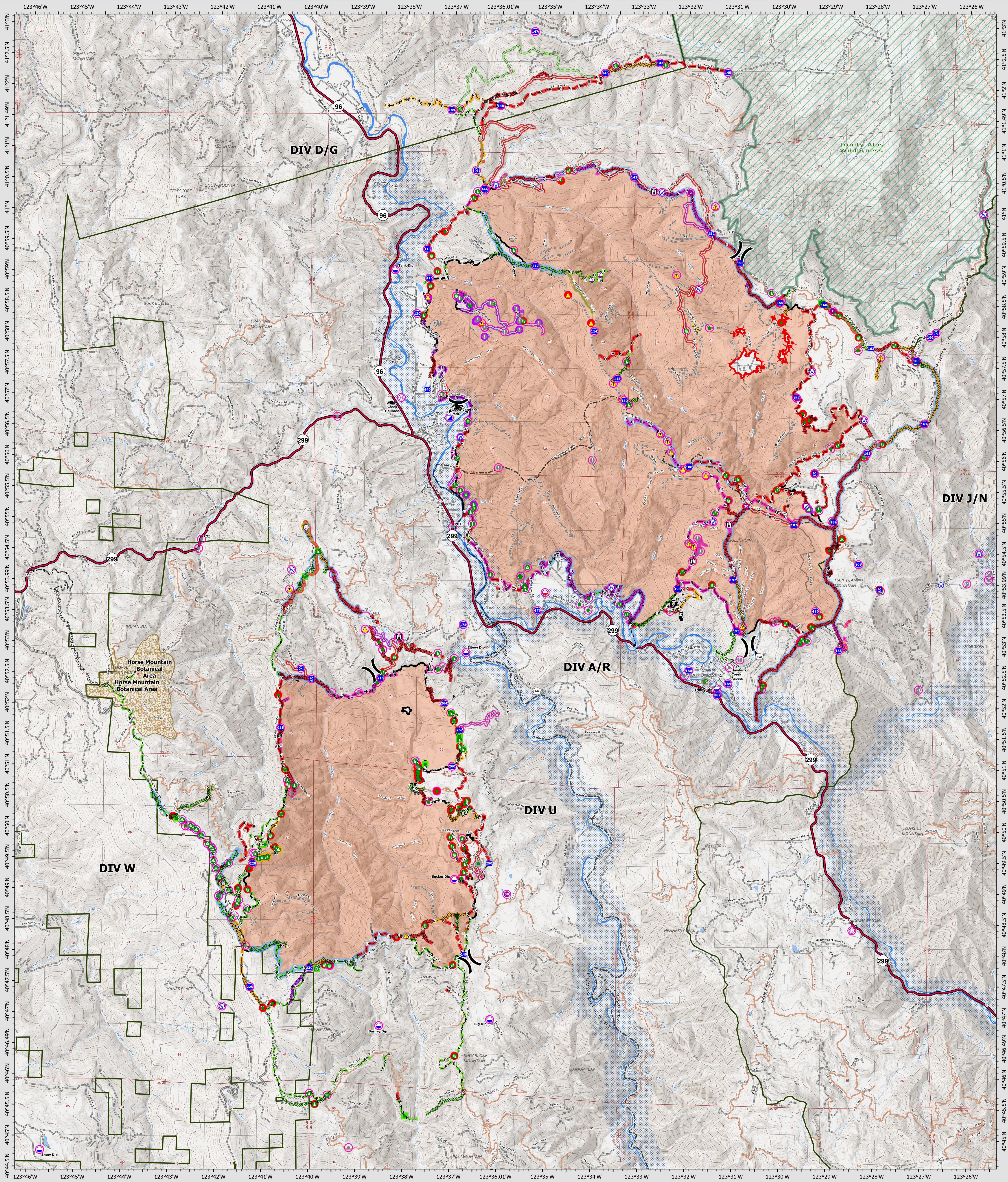


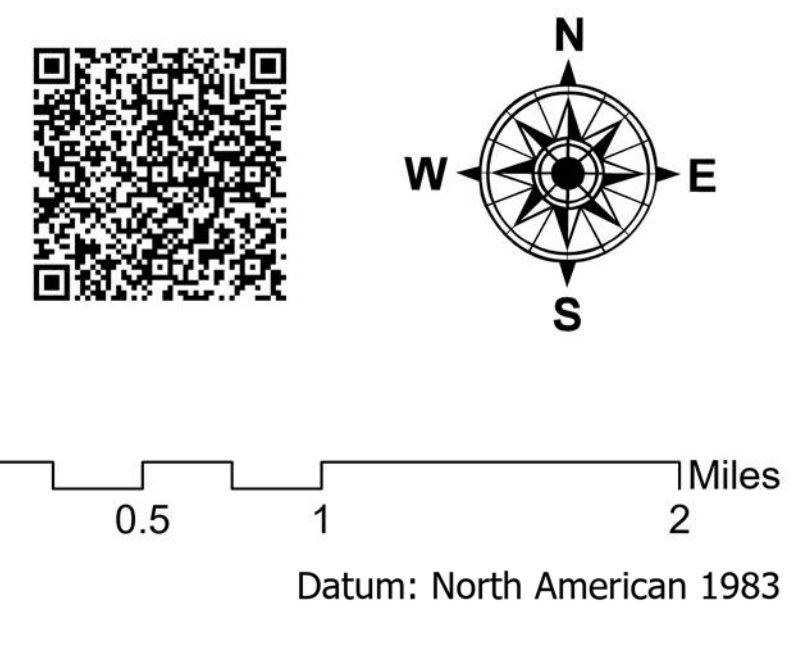
Suppression Repair Overview

9/10/2022



SRF Lightning Complex
 CA-SRF-000620
 9/10/2022
 41,540 acres
 IR updated 9/8/2022

Repair Status Point	Repair Status Line	Other Symbols	Other Symbols	Other Symbols
In Use - Fire Management	In Use - Fire Management	Helipoint	Structure Wrap	Completed Dozer Line
Needs Assessment	Needs Assessment	Helibase	Stream Crossing	Completed Fuel Break
Repair Needed	Repair Needed	Sling Site	Road Repair	Completed Hand Line
In Progress	In Progress	Unimproved Landing Area	Retardant in Avoidance Area	Completed Road as Line
Completed - Ready for Inspection	Completed - Ready for Inspection	Division Break	Resource Location	Access or Improved Road
Completed - Inspected	Completed - Inspected	Incident Command Post	Repair Point	Other
No Repair Needed	No Repair Needed	Drop Point	Landing or Log Deck	Repair Line
Other - See Comments	Other - See Comments	Staging Area	Hazard Tree	Road Repair
Contained	Contained	Lookout	Fence - Cut/Damaged	Retardant Drop
Uncountained	Uncountained	Value at Risk	Dozer Push	Future Strategic Fireline
Dip Site	Dip Site	Other	Culvert	Wildfire Daily Fire Perimeter
Mobile Retardant Base	Mobile Retardant Base	Gate	Clean Up Area	Wild & Scenic Rivers
		Bridge	Hazard	Wilderness
		Water Development or Draft Site	Water Source	



Datum: North American 1983
 GIS Updated: 9/9/2022 2051