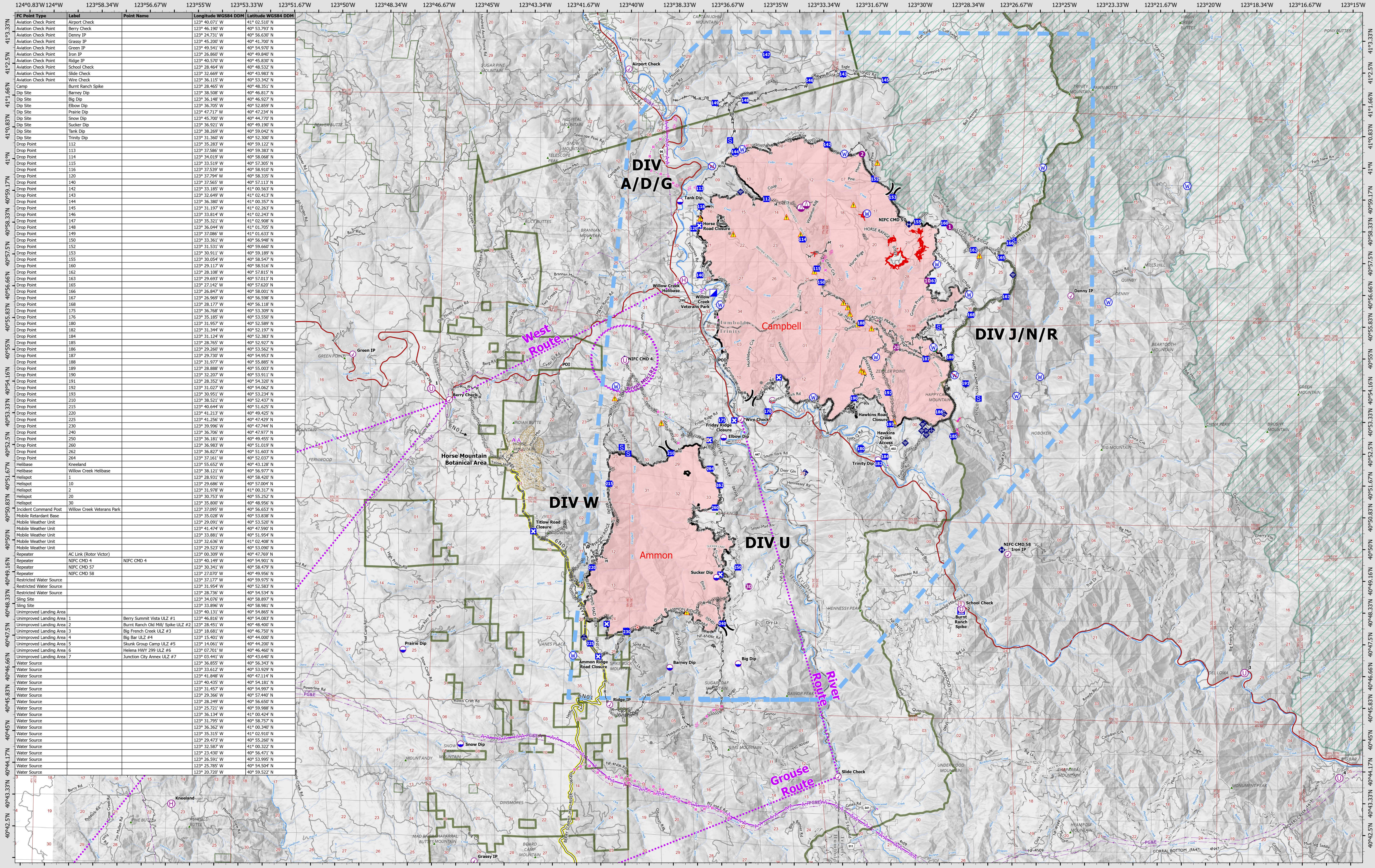


# AIR OPERATIONS - TFR

9/12/2022



FC Point Type	Label	Point Name	Longitude WGS84 DDM	Latitude WGS84 DDM
Aviation Check Point	Airport Check	Berry Check	123° 02.071' W	41° 02.510' N
Aviation Check Point	Berry Check	Berry Check	123° 06.190' W	40° 53.793' N
Aviation Check Point	Denny IP	Denny IP	123° 24.731' W	40° 56.630' N
Aviation Check Point	Grassy IP	Grassy IP	123° 45.200' W	40° 41.700' N
Aviation Check Point	Green IP	Green IP	123° 49.541' W	40° 54.970' N
Aviation Check Point	Iron IP	Iron IP	123° 26.860' W	40° 49.840' N
Aviation Check Point	Ridge IP	Ridge IP	123° 40.570' W	40° 45.830' N
Aviation Check Point	School Check	School Check	123° 28.464' W	40° 48.532' N
Aviation Check Point	Slide Check	Slide Check	123° 32.660' W	40° 43.660' N
Aviation Check Point	Wire Check	Wire Check	123° 36.115' W	40° 53.342' N
Camp	Burnt Ranch Spike	Burnt Ranch Spike	123° 28.465' W	40° 48.351' N
Dip Site	Barney Dip	Barney Dip	123° 38.508' W	40° 46.817' N
Dip Site	Big Dip	Big Dip	123° 36.148' W	40° 46.927' N
Dip Site	Elbow Dip	Elbow Dip	123° 36.705' W	40° 52.859' N
Dip Site	Friday Ridge	Friday Ridge	123° 47.717' W	40° 47.232' N
Dip Site	Snow Dip	Snow Dip	123° 45.700' W	40° 44.770' N
Dip Site	Sucker Dip	Sucker Dip	123° 36.921' W	40° 49.190' N
Dip Site	Tank Dip	Tank Dip	123° 38.269' W	40° 59.042' N
Dip Site	Trinity Dip	Trinity Dip	123° 31.360' W	40° 52.300' N
Drop Point	112		123° 35.203' W	40° 59.022' N
Drop Point	113		123° 37.586' W	40° 59.383' N
Drop Point	114		123° 34.019' W	40° 58.068' N
Drop Point	115		123° 33.519' W	40° 57.305' N
Drop Point	116		123° 37.539' W	40° 58.910' N
Drop Point	120		123° 32.368' W	40° 58.335' N
Drop Point	140		123° 37.565' W	40° 57.113' N
Drop Point	142		123° 33.185' W	41° 00.563' N
Drop Point	143		123° 32.649' W	41° 02.413' N
Drop Point	144		123° 36.380' W	41° 00.357' N
Drop Point	145		123° 31.197' W	41° 02.263' N
Drop Point	146		123° 32.014' W	41° 02.232' N
Drop Point	147		123° 35.321' W	41° 02.908' N
Drop Point	148		123° 36.044' W	41° 01.705' N
Drop Point	149		123° 37.086' W	41° 01.633' N
Drop Point	150		123° 33.361' W	40° 56.948' N
Drop Point	152		123° 31.531' W	40° 59.667' N
Drop Point	153		123° 30.911' W	40° 59.189' N
Drop Point	155		123° 30.054' W	40° 58.547' N
Drop Point	160		123° 29.117' W	40° 58.516' N
Drop Point	162		123° 28.108' W	40° 57.815' N
Drop Point	163		123° 29.693' W	40° 57.013' N
Drop Point	165		123° 27.142' W	40° 57.622' N
Drop Point	166		123° 26.847' W	40° 58.001' N
Drop Point	167		123° 26.969' W	40° 56.998' N
Drop Point	168		123° 28.177' W	40° 56.118' N
Drop Point	175		123° 36.768' W	40° 53.309' N
Drop Point	176		123° 35.307' W	40° 53.522' N
Drop Point	180		123° 31.957' W	40° 52.589' N
Drop Point	182		123° 31.344' W	40° 52.197' N
Drop Point	184		123° 31.124' W	40° 52.383' N
Drop Point	185		123° 28.765' W	40° 52.927' N
Drop Point	186		123° 29.360' W	40° 53.267' N
Drop Point	187		123° 29.720' W	40° 54.953' N
Drop Point	188		123° 31.977' W	40° 55.885' N
Drop Point	189		123° 28.888' W	40° 55.003' N
Drop Point	190		123° 32.207' W	40° 53.911' N
Drop Point	191		123° 28.352' W	40° 54.520' N
Drop Point	192		123° 31.027' W	40° 54.062' N
Drop Point	193		123° 30.951' W	40° 53.234' N
Drop Point	210		123° 38.521' W	40° 52.437' N
Drop Point	215		123° 40.644' W	40° 51.625' N
Drop Point	220		123° 41.213' W	40° 49.425' N
Drop Point	225		123° 41.250' W	40° 47.423' N
Drop Point	230		123° 39.996' W	40° 47.744' N
Drop Point	240		123° 36.706' W	40° 47.977' N
Drop Point	250		123° 36.181' W	40° 49.455' N
Drop Point	260		123° 36.983' W	40° 51.019' N
Drop Point	262		123° 36.627' W	40° 51.603' N
Drop Point	264		123° 37.161' W	40° 52.037' N
Helibase	Kneeland	Kneeland	123° 55.652' W	40° 43.128' N
Helibase	Willow Creek Helibase	Willow Creek Helibase	123° 38.121' W	40° 56.977' N
Helispot	1		123° 28.931' W	40° 58.420' N
Helispot	10		123° 29.686' W	40° 57.004' N
Helispot	2		123° 31.078' W	40° 51.017' N
Helispot	20		123° 30.753' W	40° 55.252' N
Helispot	30		123° 35.800' W	40° 48.956' N
Incident Command Post	Willow Creek Veterans Park		123° 37.095' W	40° 56.653' N
Mobile Retardant Base			123° 35.028' W	40° 53.838' N
Mobile Weather Unit			123° 29.091' W	40° 53.520' N
Mobile Weather Unit			123° 41.474' W	40° 47.590' N
Mobile Weather Unit			123° 33.881' W	40° 51.954' N
Mobile Weather Unit			123° 32.636' W	41° 02.408' N
Mobile Weather Unit			123° 29.523' W	40° 53.090' N
Repeater	AC Link (Rotor Vector)		123° 00.309' W	40° 49.759' N
Repeater	NIFC CMD 4	NIFC CMD 4	123° 40.149' W	40° 54.091' N
Repeater	NIFC CMD 57		123° 30.341' W	40° 58.479' N
Repeater	NIFC CMD 58		123° 27.070' W	40° 49.956' N
Restricted Water Source			123° 37.177' W	40° 59.975' N
Restricted Water Source			123° 31.994' W	40° 52.585' N
Restricted Water Source			123° 28.726' W	40° 54.534' N
Sling Site			123° 34.076' W	40° 58.897' N
Sling Site			123° 33.896' W	40° 58.981' N
Unimproved Landing Area			123° 40.131' W	40° 54.865' N
Unimproved Landing Area	1	Berry Summit Vista ULZ #1	123° 46.816' W	40° 54.083' N
Unimproved Landing Area	2	Burnt Ranch Old MMU Spike ULZ #2	123° 28.451' W	40° 48.404' N
Unimproved Landing Area	3	Big French Creek ULZ #3	123° 18.681' W	40° 46.750' N
Unimproved Landing Area	4	Big Bar ULZ #4	123° 15.401' W	40° 44.000' N
Unimproved Landing Area	5	Skunk Group Camp ULZ #5	123° 14.061' W	40° 44.200' N
Unimproved Landing Area	6	Helena HWY 299 ULZ #6	123° 07.701' W	40° 46.460' N
Unimproved Landing Area	7	Junction City Annex ULZ #7	123° 03.441' W	40° 43.647' N
Water Source			123° 36.855' W	40° 56.341' N
Water Source			123° 33.612' W	40° 53.929' N
Water Source			123° 41.848' W	40° 47.114' N
Water Source			123° 40.435' W	40° 54.181' N
Water Source			123° 31.457' W	40° 54.997' N
Water Source			123° 29.366' W	40° 57.440' N
Water Source			123° 28.249' W	40° 56.650' N
Water Source			123° 25.721' W	40° 59.988' N
Water Source			123° 36.134' W	41° 00.424' N
Water Source			123° 31.795' W	40° 58.757' N
Water Source			123° 36.362' W	41° 00.340' N
Water Source			123° 35.315' W	41° 02.910' N
Water Source			123° 29.473' W	40° 55.260' N
Water Source			123° 32.587' W	41° 00.322' N
Water Source			123° 23.430' W	40° 56.471' N
Water Source			123° 26.591' W	40° 53.995' N
Water Source			123° 25.785' W	40° 55.785' N
Water Source			123° 20.720' W	40° 59.522' N

**SRF Lightning Complex**  
 CA-SRF-000620  
 9/12/2022  
 41,540 acres  
 IR updated 9/11/2022

- ✕ Division Break
- ✕ Unimproved Landing Area
- ✕ Retardant in Avoidance Area
- ✕ Other
- ✕ Completed Fuel Break
- ✕ Unmitigated
- ✕ Aerial Hazard
- ✕ Aviation Check Point
- ✕ Incident Command Post
- ✕ Mobile Weather Unit
- ✕ Bridge
- ✕ Completed Hand Line
- ✕ Summit
- ✕ Horse Mtn Botanic Area
- ✕ Dip Site
- ✕ Internet Road as Line
- ✕ Retardant Drop
- ✕ Completed Road as Line
- ✕ Tower
- ✕ Mobile Retardant Base
- ✕ Closure
- ✕ Repeater
- ✕ Planned Dozer Line
- ✕ Forest Administrative Boundaries
- ✕ Helispot
- ✕ Camp
- ✕ Aviation Route
- ✕ Planned Hand Line
- ✕ County Line
- ✕ Helibase
- ✕ Staging Area
- ✕ UAS Launch and Recovery Zone
- ✕ Planned Road as Line
- ✕ Powerline
- ✕ Water Source
- ✕ Temporary Flight Restriction
- ✕ Planned Road as Line
- ✕ Fire Perimeter
- ✕ Sling Site
- ✕ Hot Spot - Spot Fire
- ✕ Restricted Water Source
- ✕ Completed Dozer Line









0 0.5 1 2 Miles

Date: North American 1983