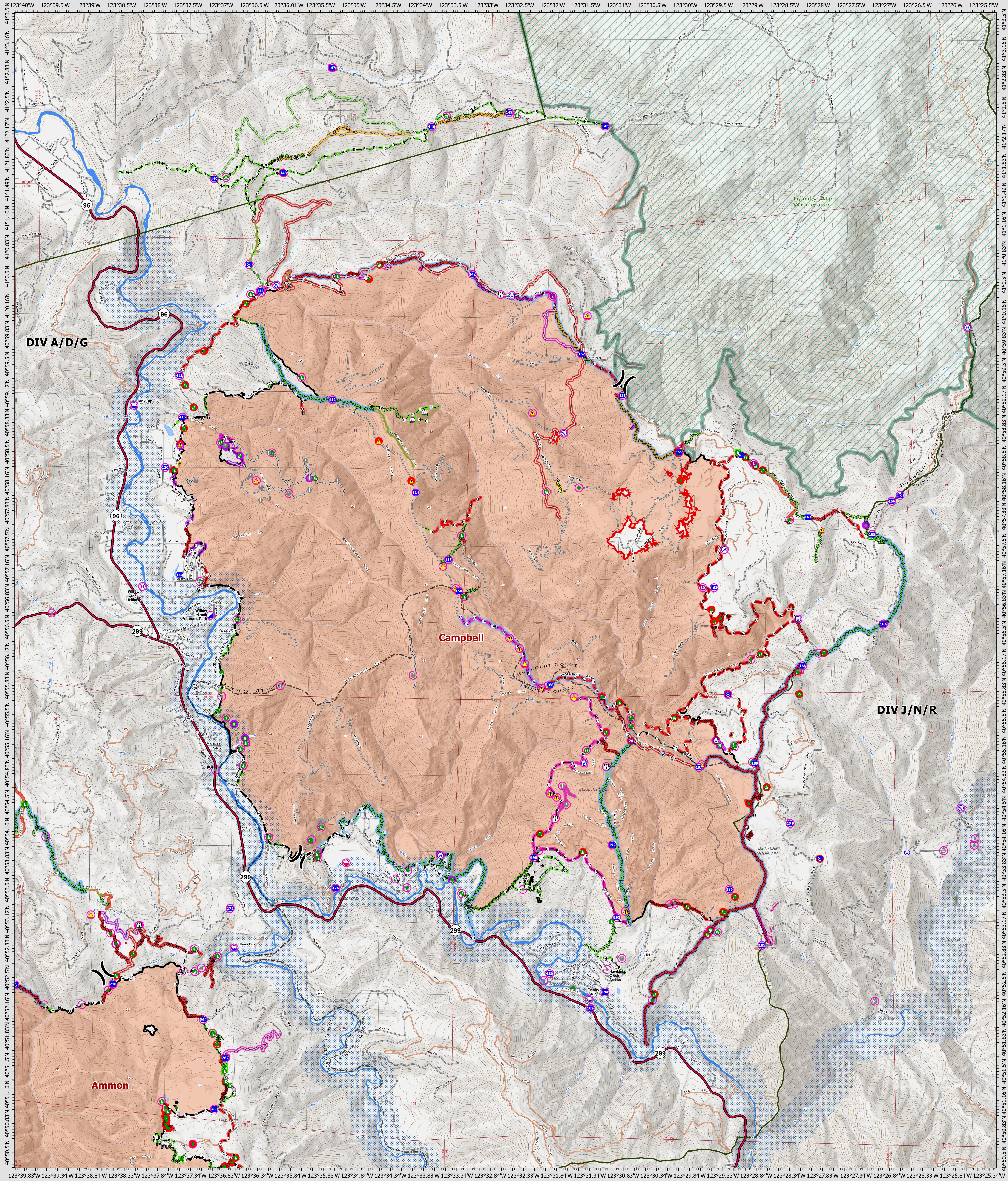


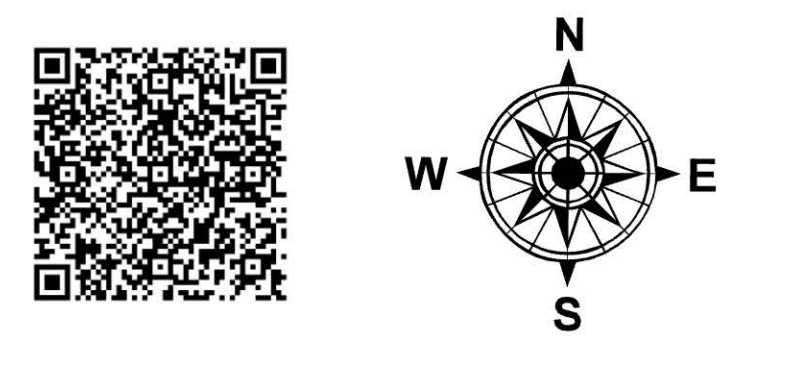
Suppression Repair Campbell

9/12/2022



SRF Lightning Complex
 CA-SRF-000620
 9/12/2022
 41,540 acres
 IR updated 9/11/2022

- | | | | | |
|--|--|---|---|---|
| <p>Repair Status Point</p> <ul style="list-style-type: none"> ● In Use - Fire Management ● Needs Assessment ● Repair Needed ● Completed - Inspected ● No Repair Needed ● Other - See Comments | <p>Repair Status Line</p> <ul style="list-style-type: none"> — In Use - Fire Management — Needs Assessment — Repair Needed — In Progress — Completed - Ready for Inspection — Completed - Inspected — No Repair Needed — Other - See Comments — Contained — Uncountained — Dip Site — Mobile Retardant Base | <ul style="list-style-type: none"> ● Helipoint ● Helibase ● Sling Site ● Unimproved Landing Area ● Division Break ● Incident Command Post ● Drop Point ● Staging Area ● Lockout ● Value at Risk ● Other ● Gate ● Bridge ● Water Development or Draft Site | <ul style="list-style-type: none"> ● Structure Wrap ● Road Repair ● Retardant in Avoidance Area ● Resource Location ● Repair Point ● Landing or Log Deck ● Hazard Tree ● Fence - Cut/Damaged ● Dozer Push ● Culvert ● Clean Up Area ● Hazard ● Water Source | <ul style="list-style-type: none"> — Completed Dozer Line — Completed Hand Line — Completed Road as Line — Access or Improved Road — Other — Repair Line — Road Repair — Retardant Drop — Future Strategic Fireline — Wildfire Daily Fire Perimeter — Wild & Scenic Rivers — Wilderness |
|--|--|---|---|---|



0 0.5 1 2 Miles
 Datum: North American 1983
 GISX Updated: 9/11/2022 2037