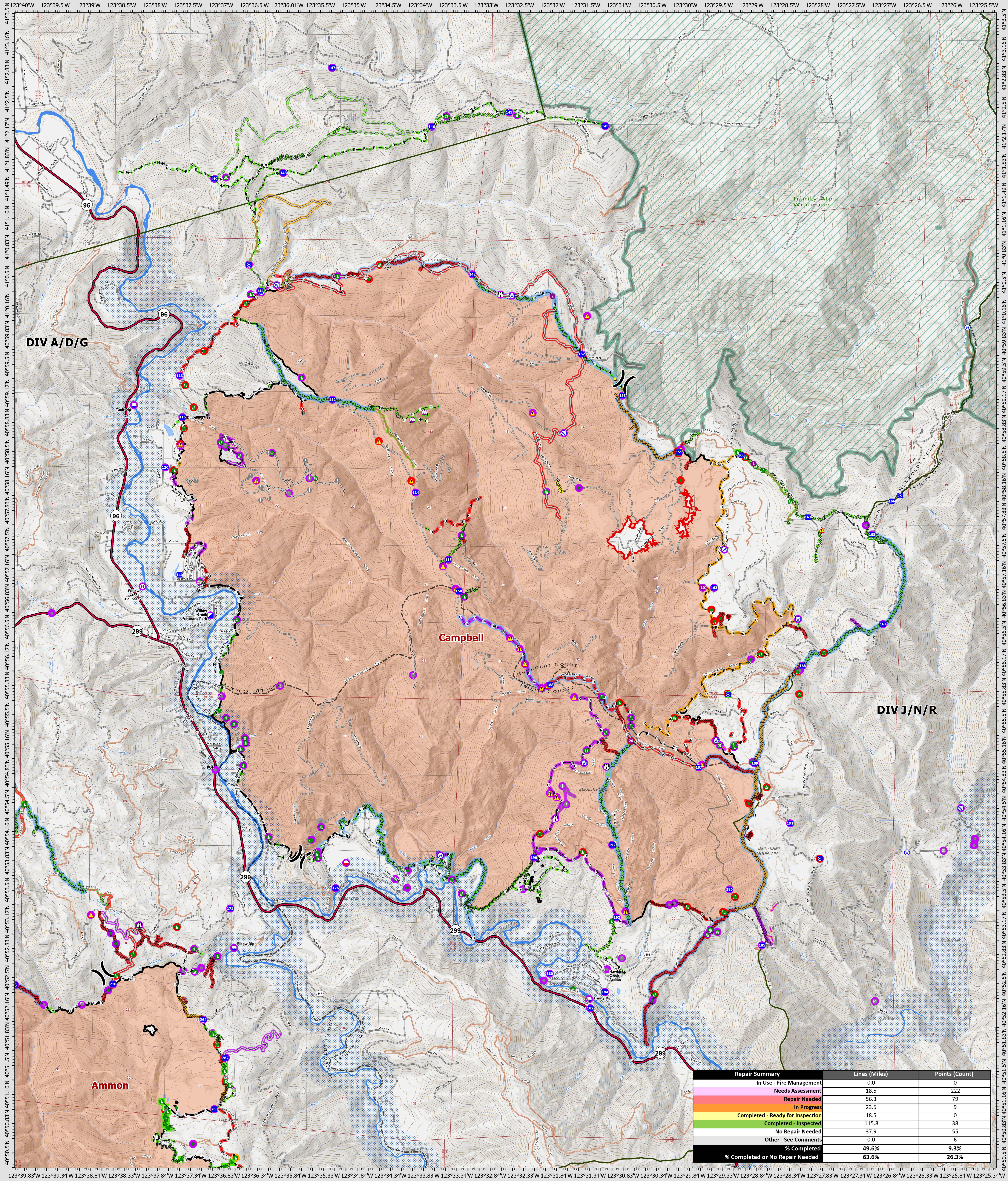


Suppression Repair Campbell

9/14/2022



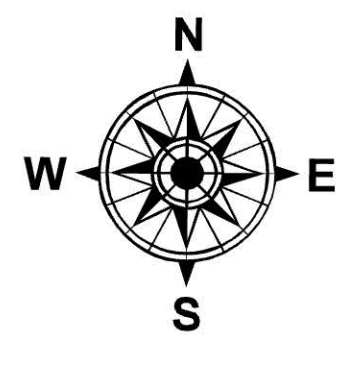
Repair Summary	Lines (Miles)	Points (Count)
In Use - Fire Management	0.0	0
Needs Assessment	18.5	222
Repair Needed	56.3	79
In Progress	23.5	9
Completed - Ready for Inspection	18.5	0
Completed - Inspected	115.8	38
No Repair Needed	37.9	55
Other - See Comments	0.0	6
% Completed	49.6%	9.3%
% Completed or No Repair Needed	63.6%	26.3%

SRF Lightning Complex

CA-SRF-000620
9/14/2022

41,560 acres
IR updated 9/12/2022

- Repair Status Point**
- Needs Assessment
 - Repair Needed
 - In Progress
 - Completed - Inspected
 - No Repair Needed
 - Other - See Comments
- Repair Status Line**
- In Use - Fire Management
 - Needs Assessment
 - Repair Needed
 - In Progress
 - Completed - Ready for Inspection
 - Completed - Inspected
 - No Repair Needed
 - Other - See Comments
 - Contained
 - Uncountained
 - Dip Site
 - Mobile Retardant Base
- Other Symbols**
- Helispot
 - Helibase
 - Sling Site
 - Unimproved Landing Area
 - Division Break
 - Incident Command Post
 - Drop Point
 - Staging Area
 - Lockout
 - Value at Risk
 - Other
 - Gate
 - Bridge
 - Water Development or Draft Site
 - Structure Wrap
 - Road Repair
 - Retardant in Avoidance Area
 - Resource Location
 - Repair Point
 - Landing or Log Deck
 - Hazard Tree
 - Fence - Cut/Damaged
 - Dozer Push
 - Culvert
 - Clean Up Area
 - Hazard
 - Water Source
 - Completed Dozer Line
 - Completed Hand Line
 - Completed Road as Line
 - Access or Improved Road
 - Highlighted Feature
 - Other
 - Repair Line
 - Road Repair
 - Retardant Drop
 - Future Strategic Fireline
 - Wildfire Daily Fire Perimeter
 - Wild & Scenic Rivers
 - Wilderness



0 0.5 1 2 Miles

Datum: North American 1983

GISX Updated: 9/13/2022 2027