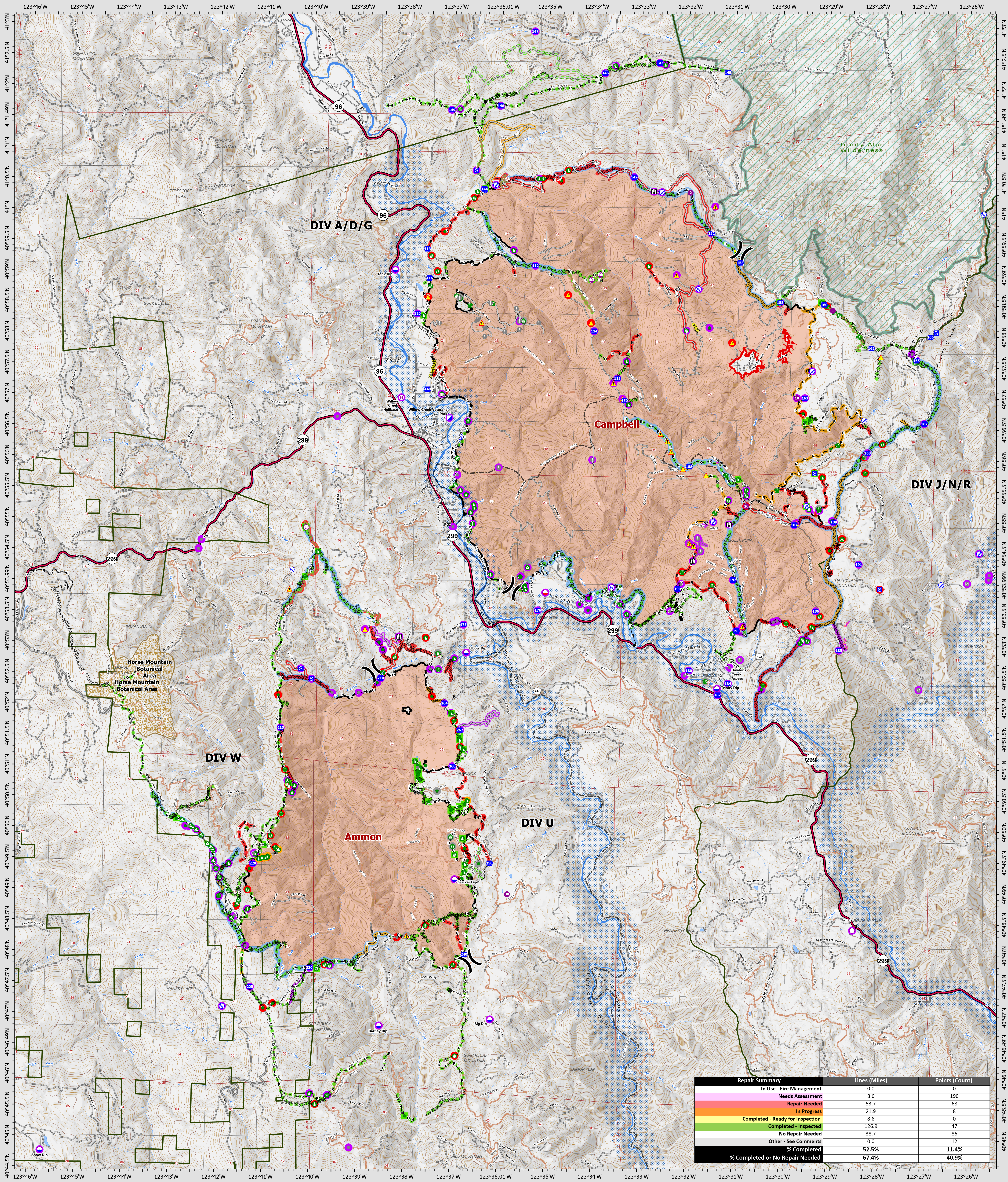


# Suppression Repair Overview

9/15/2022



Repair Summary	Lines (Miles)	Points (Count)
In Use - Fire Management	0.0	0
Needs Assessment	8.6	190
Repair Needed	53.7	68
In Progress	21.9	8
Completed - Ready for Inspection	8.6	0
Completed - Inspected	126.9	47
No Repair Needed	38.7	86
Other - See Comments	0.0	12
<b>% Completed</b>	<b>52.5%</b>	<b>11.4%</b>
<b>% Completed or No Repair Needed</b>	<b>67.4%</b>	<b>40.9%</b>

**SRF Lightning Complex**  
 CA-SRF-000620  
 9/15/2022  
 41,560 acres  
 IR updated 9/12/2022

<p><b>Repair Status Point</b></p> <ul style="list-style-type: none"> <li><span style="color: red;">●</span> Repair Assessment</li> <li><span style="color: orange;">●</span> Needs Assessment</li> <li><span style="color: yellow;">●</span> In Progress</li> <li><span style="color: green;">●</span> Completed - Inspected</li> <li><span style="color: grey;">●</span> No Repair Needed</li> <li><span style="color: grey;">●</span> Other - See Comments</li> </ul>	<p><b>Repair Status Line</b></p> <ul style="list-style-type: none"> <li><span style="color: red;">—</span> In Use - Fire Management</li> <li><span style="color: orange;">—</span> Needs Assessment</li> <li><span style="color: yellow;">—</span> Repair Needed</li> <li><span style="color: green;">—</span> In Progress</li> <li><span style="color: lightgreen;">—</span> Completed - Ready for Inspection</li> <li><span style="color: lightgreen;">—</span> Completed - Inspected</li> <li><span style="color: grey;">—</span> No Repair Needed</li> <li><span style="color: grey;">—</span> Other - See Comments</li> <li><span style="color: red;">—</span> Uncolored</li> <li><span style="color: red;">—</span> Dip Site</li> <li><span style="color: red;">—</span> Mobile Retardant Base</li> <li><span style="color: red;">—</span> Helispot</li> </ul>	<ul style="list-style-type: none"> <li><span style="color: blue;">○</span> Helibase</li> <li><span style="color: blue;">○</span> Sling Site</li> <li><span style="color: blue;">○</span> Unimproved Landing Area</li> <li><span style="color: blue;">○</span> Division Break</li> <li><span style="color: blue;">○</span> Incident Command Post</li> <li><span style="color: blue;">○</span> Drop Point</li> <li><span style="color: blue;">○</span> Staging Area</li> <li><span style="color: blue;">○</span> Lockout</li> <li><span style="color: blue;">○</span> Values at Risk</li> <li><span style="color: blue;">○</span> Other</li> <li><span style="color: blue;">○</span> Gate</li> <li><span style="color: blue;">○</span> Bridge</li> <li><span style="color: blue;">○</span> Water Development or Draft Site</li> <li><span style="color: blue;">○</span> Structure Wrap</li> </ul>	<ul style="list-style-type: none"> <li><span style="color: green;">○</span> Stream Crossing</li> <li><span style="color: green;">○</span> Road Repair</li> <li><span style="color: green;">○</span> Retardant in Avoidance Area</li> <li><span style="color: green;">○</span> Resource Location</li> <li><span style="color: green;">○</span> Repair Point</li> <li><span style="color: green;">○</span> Landing or Log Deck</li> <li><span style="color: green;">○</span> Hazard Tree</li> <li><span style="color: green;">○</span> Fence - Cut/Damaged</li> <li><span style="color: green;">○</span> Dozer Push</li> <li><span style="color: green;">○</span> Values at Risk</li> <li><span style="color: green;">○</span> Culvert</li> <li><span style="color: green;">○</span> Clean Up Area</li> <li><span style="color: green;">○</span> Hazard</li> <li><span style="color: green;">○</span> Water Source</li> <li><span style="color: green;">○</span> Completed Dozer Line</li> </ul>	<ul style="list-style-type: none"> <li><span style="color: blue;">—</span> Completed Fuel Break</li> <li><span style="color: blue;">—</span> Completed Hand Line</li> <li><span style="color: blue;">—</span> Completed Road as Line</li> <li><span style="color: blue;">—</span> Access or Improved Road</li> <li><span style="color: blue;">—</span> Highlighted Feature</li> <li><span style="color: blue;">—</span> Other</li> <li><span style="color: blue;">—</span> Repair Line</li> <li><span style="color: blue;">—</span> Road Repair</li> <li><span style="color: blue;">—</span> Retardant Drop</li> <li><span style="color: blue;">—</span> Future Strategic Fireline</li> <li><span style="color: blue;">—</span> Wildfire Daily Fire Perimeter</li> <li><span style="color: blue;">—</span> Wild &amp; Scenic Rivers</li> <li><span style="color: blue;">—</span> Wilderness</li> </ul>
---	--	---	--	--



QR Code

North Arrow

Scale: 0 to 2 Miles

Datum: North American 1983

GISX Updated: 9/14/2022 2:12