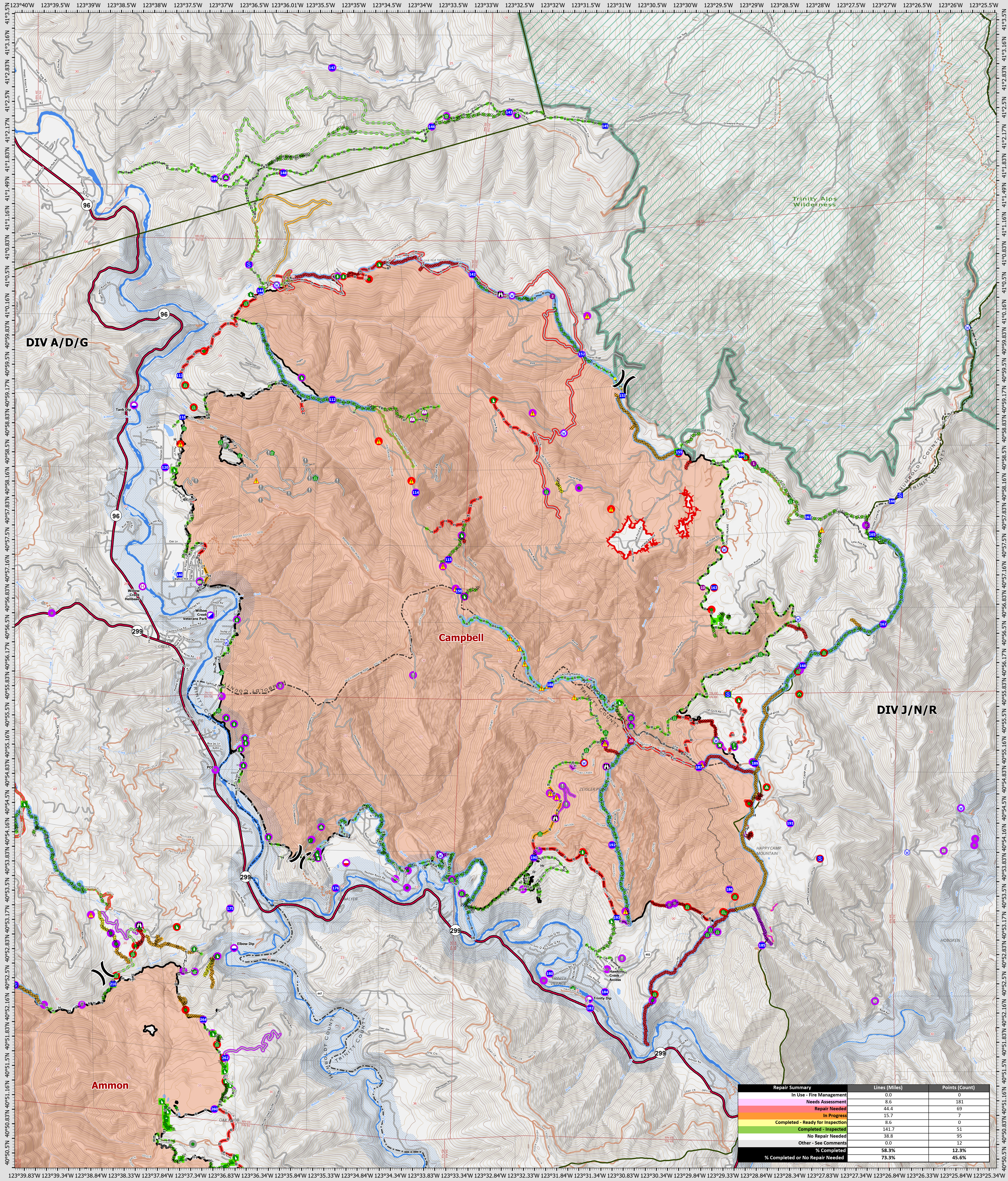


Suppression Repair Campbell

9/16/2022

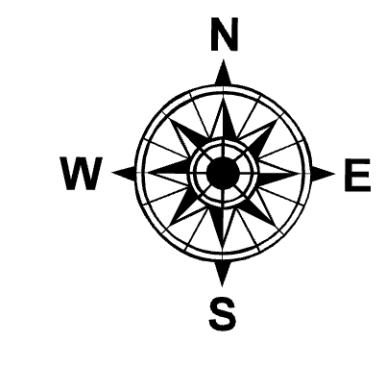


Repair Summary	Lines (Miles)	Points (Count)
In Use - Fire Management	0.0	0
Needs Assessment	8.6	181
Repair Needed	44.4	69
In Progress	15.7	7
Completed - Ready for Inspection	8.6	0
Completed - Inspected	141.7	51
No Repair Needed	38.8	95
Other - See Comments	0.0	12
% Completed	58.3%	12.3%
% Completed or No Repair Needed	73.3%	45.6%

SRF Lightning Complex
 CA-SRF-000620
 9/16/2022
 41,560 acres
 IR updated 9/12/2022

- Repair Status Point**
- Needs Assessment
 - Repair Needed
 - Completed - Inspected
 - No Repair Needed
 - Other - See Comments
- Repair Status Line**
- In Use - Fire Management
 - Needs Assessment
 - Repair Needed
 - In Progress
 - Completed - Ready for Inspection
 - Completed - Inspected
 - No Repair Needed
 - Other - See Comments
 - Contained
 - Uncounted
 - Dip Site
 - Mobile Retardant Base
- Other Symbols**
- Helipoint
 - Sling Site
 - Unimproved Landing Area
 - Division Break
 - Incident Command Post
 - Drop Point
 - Staging Area
 - Lockout
 - Value at Risk
 - Other
 - Gate
 - Bridge
 - Water Development or Draft Site

- Structure Wrap
- Road Repair
- Retardant in Avoidance Area
- Resource Location
- Repair Point
- Landing or Log Deck
- Hazard Tree
- Fence - Cut/Damaged
- Dozer Push
- Culvert
- Clean Up Area
- Hazard
- Water Source
- Completed Dozer Line
- Completed Hand Line
- Completed Road as Line
- Access or Improved Road
- Highlighted Feature
- Other
- Repair Line
- Road Repair
- Retardant Drop
- Future Strategic Fireline
- Wildfire Daily Fire Perimeter
- Wild & Scenic Rivers
- Wilderness



0 0.5 1 2 Miles

Datum: North American 1983
 GISX Updated: 9/15/2022 2201