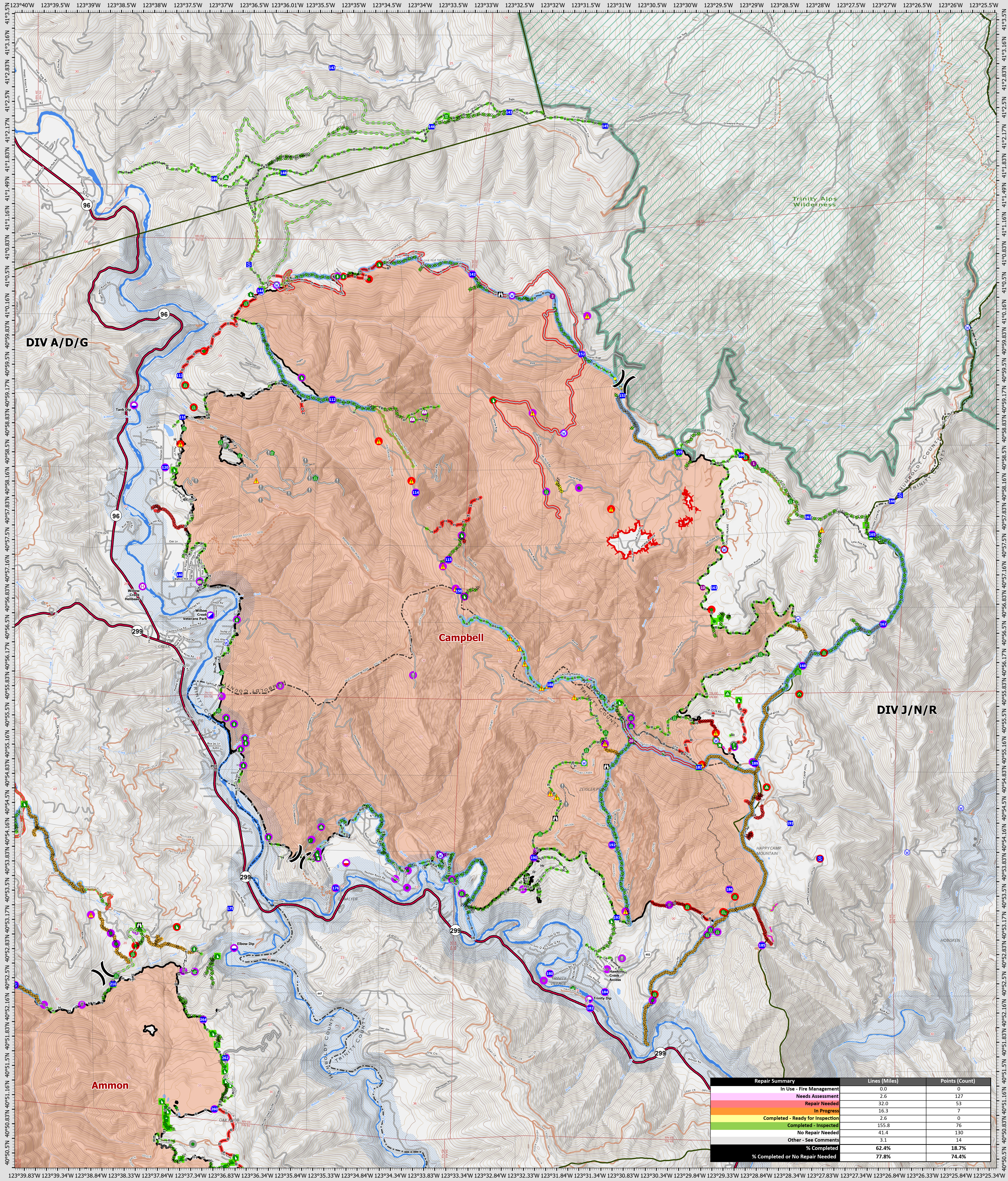


Suppression Repair Campbell

9/18/2022



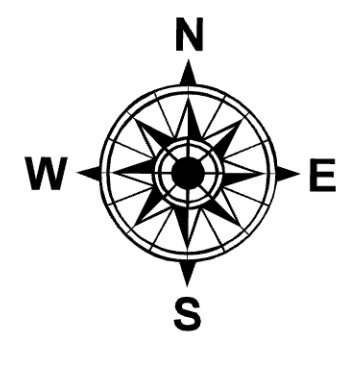
Repair Summary	Lines (Miles)	Points (Count)
In Use - Fire Management	0.0	0
Needs Assessment	2.6	127
Repair Needed	32.0	53
In Progress	16.3	7
Completed - Ready for Inspection	2.6	0
Completed - Inspected	155.8	76
No Repair Needed	41.4	130
Other - See Comments	3.1	14
% Completed	62.4%	18.7%
% Completed or No Repair Needed	77.8%	74.4%

SRF Lightning Complex
 CA-SRF-000620
 9/18/2022
 41,591 acres
 IR updated 9/15/2022

- Repair Status Point**
- Needs Assessment
 - Repair Needed
 - Completed - Inspected
 - No Repair Needed
 - Other - See Comments
- Repair Status Line**
- In Use - Fire Management
 - Needs Assessment
 - Repair Needed
 - In Progress
 - Completed - Ready for Inspection
 - Completed - Inspected
 - No Repair Needed
 - Other - See Comments
 - Contained
 - Uncountained
 - Dip Site
 - Mobile Retardant Base
- Other Symbols**
- Helispot
 - Sling Site
 - Unimproved Landing Area
 - Division Break
 - Incident Command Post
 - Drop Point
 - Staging Area
 - Lockout
 - Value at Risk
 - Other
 - Gate
 - Bridge
 - Water Development or Draft Site

- Structure Wrap
- Road Repair
- Retardant in Avoidance Area
- Resource Location
- Repair Point
- Landing or Log Deck
- Hazard Tree
- Fence - Cut/Damaged
- Dozer Push
- Culvert
- Clean Up Area
- Hazard
- Water Source

- Completed Dozer Line
- Completed Hand Line
- Completed Road as Line
- Access or Improved Road
- Highlighted Feature
- Other
- Repair Line
- Road Repair
- Retardant Drop
- Future Strategic Fireline
- Wildfire Daily Fire Perimeter
- Wild & Scenic Rivers
- Wilderness



0 0.5 1 2 Miles
 Datum: North American 1983
 GISX Updated: 9/17/2022 20:33