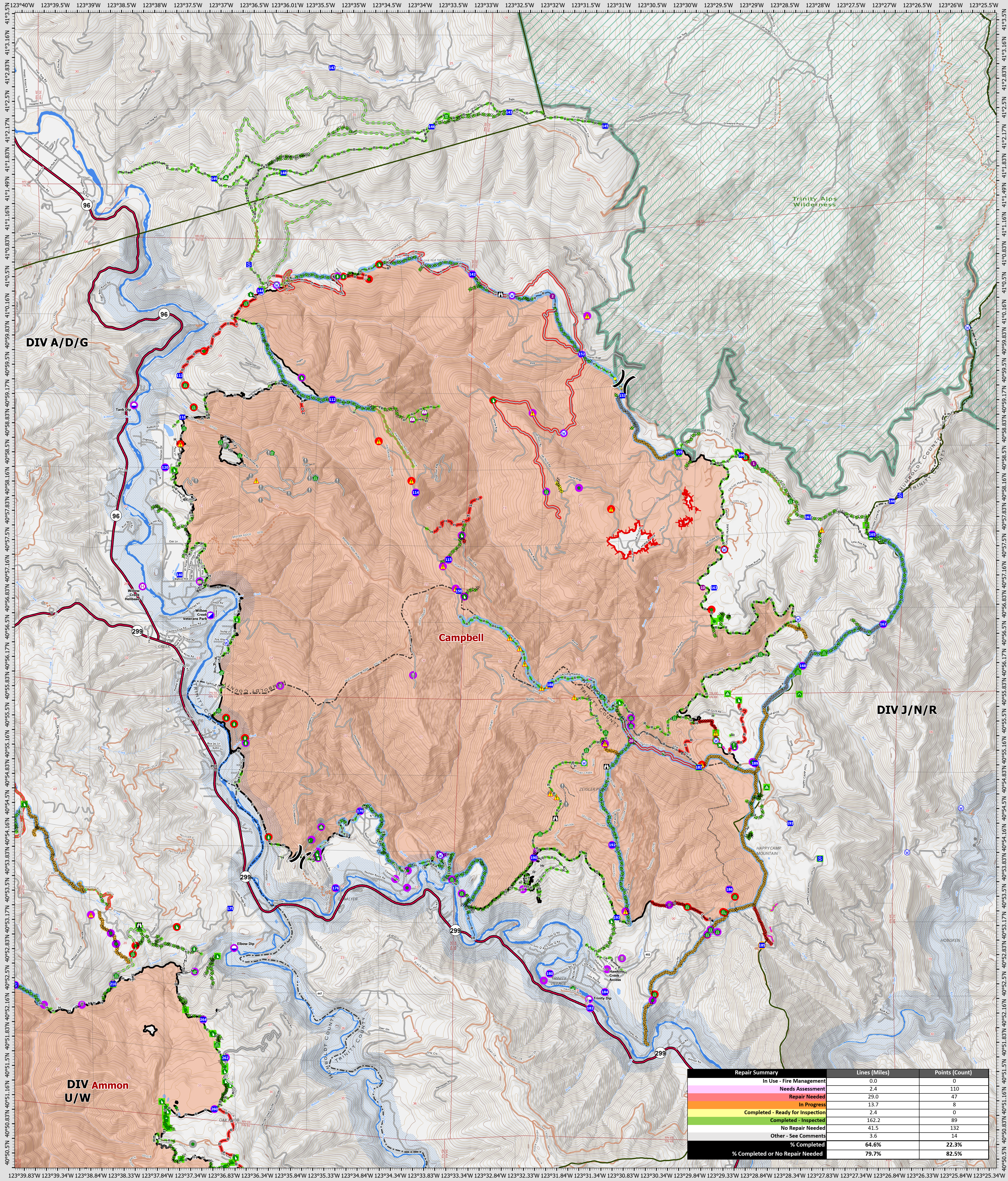


Suppression Repair Campbell

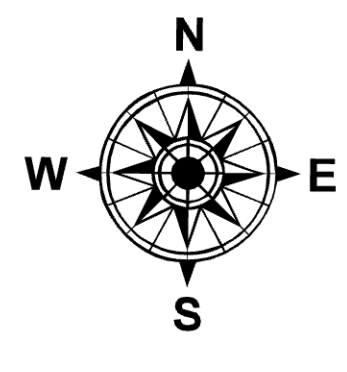
9/20/2022



Repair Summary	Lines (Miles)	Points (Count)
In Use - Fire Management	0.0	0
Needs Assessment	2.4	110
Repair Needed	29.0	47
In Progress	13.7	8
Completed - Ready for Inspection	2.4	0
Completed - Inspected	162.2	89
No Repair Needed	41.5	132
Other - See Comments	3.6	14
% Completed	64.6%	22.3%
% Completed or No Repair Needed	79.7%	82.5%

SRF Lightning Complex
 CA-SRF-000620
 9/20/2022
 41,591 acres
 IR updated 9/15/2022

- Repair Status Point**
 - Needs Assessment
 - Repair Needed
 - In Progress
 - Completed - Inspected
 - No Repair Needed
 - Other - See Comments
- Repair Status Line**
 - In Use - Fire Management
 - Needs Assessment
 - Repair Needed
 - In Progress
 - Completed - Ready for Inspection
 - Completed - Inspected
 - No Repair Needed
 - Other - See Comments
 - Uncollected
 - Dip Site
 - Helispot
- Other Symbols**
 - Helibase
 - Sling Site
 - Unimproved Landing Area
 - Division Break
 - Incident Command Post
 - Drop Point
 - Staging Area
 - Lockout
 - Valve at Risk
 - Other
 - Gate
 - Bridge
 - Water Development or Draft Site
 - Structure Wrap
 - Road Repair
 - Retardant in Avoidance Area
 - Resource Location
 - Repair Point
 - Landing or Log Deck
 - Hazard Tree
 - Fence - Cut/Damaged
 - Dozer Push
 - Culvert
 - Clean Up Area
 - Hazard
 - Water Source
 - Completed Dozer Line
 - Completed Hand Line
 - Completed Road as Line
 - Access or Improved Road
 - Highlighted Feature
 - Other
 - Repair Line
 - Road Repair
 - Retardant Drop
 - Future Strategic Fireline
 - Wildfire Daily Fire Perimeter
 - Wild & Scenic Rivers
 - Wilderness



0 0.5 1 2 Miles
 Datum: North American 1983
 GISX Updated: 9/19/2022 2103