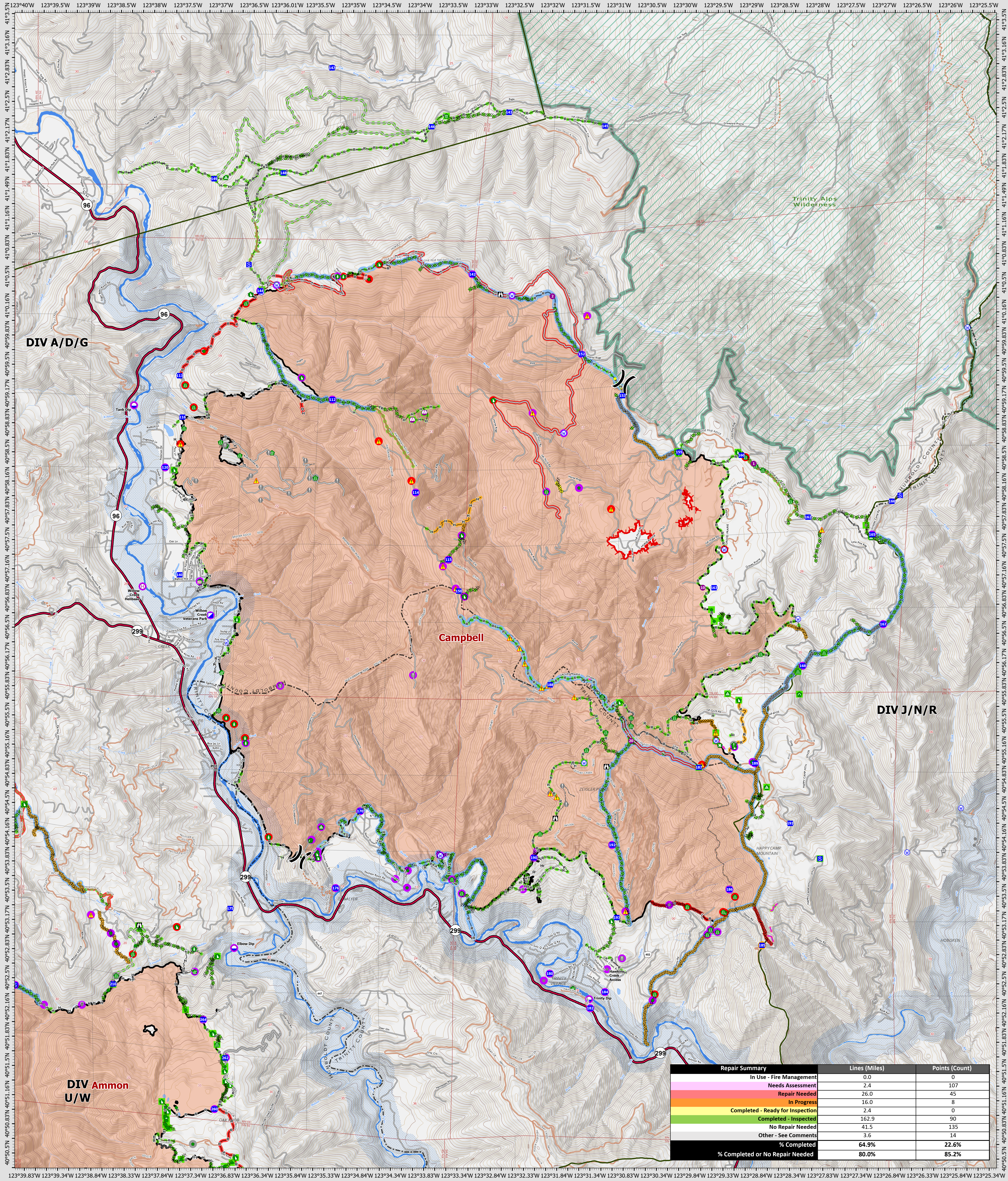


# Suppression Repair Campbell

9/21/2022

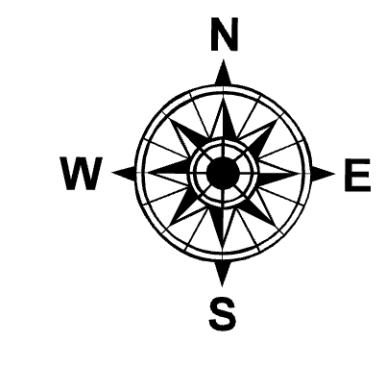


Repair Summary	Lines (Miles)	Points (Count)
In Use - Fire Management	0.0	0
Needs Assessment	2.4	107
Repair Needed	26.0	45
In Progress	16.0	8
Completed - Ready for Inspection	2.4	0
Completed - Inspected	162.9	90
No Repair Needed	41.5	135
Other - See Comments	3.6	14
<b>% Completed</b>	<b>64.9%</b>	<b>22.6%</b>
<b>% Completed or No Repair Needed</b>	<b>80.0%</b>	<b>85.2%</b>

**SRF Lightning Complex**  
 CA-SRF-000620  
 9/21/2022  
 41,591 acres  
 IR updated 9/15/2022

- Repair Status Point**
- Needs Assessment
  - Repair Needed
  - In Progress
  - Completed - Inspected
  - No Repair Needed
  - Other - See Comments
- Repair Status Line**
- In Use - Fire Management
  - Needs Assessment
  - Repair Needed
  - In Progress
  - Completed - Ready for Inspection
  - Completed - Inspected
  - No Repair Needed
  - Other - See Comments
  - Uncollected
  - Dip Site
  - Helispot
- Other Symbols**
- Helispot
  - Sling Site
  - Unimproved Landing Area
  - Division Break
  - Incident Command Post
  - Drop Point
  - Staging Area
  - Lockout
  - Valley at Risk
  - Other
  - Gate
  - Bridge
  - Water Development or Draft Site

- Structure Wrap
- Road Repair
- Retardant in Avoidance Area
- Resource Location
- Repair Point
- Landing or Log Deck
- Hazard Tree
- Fence - Cut/Damaged
- Dozer Push
- Culvert
- Clean Up Area
- Hazard
- Water Source
- Completed Dozer Line
- Completed Hand Line
- Completed Road as Line
- Access or Improved Road
- Highlighted Feature
- Other
- Repair Line
- Road Repair
- Retardant Drop
- Future Strategic Fireline
- Wildfire Daily Fire Perimeter
- Wild & Scenic Rivers
- Wilderness



0 0.5 1 2 Miles  
 Datum: North American 1983  
 GISX Updated: 9/20/2022 2022