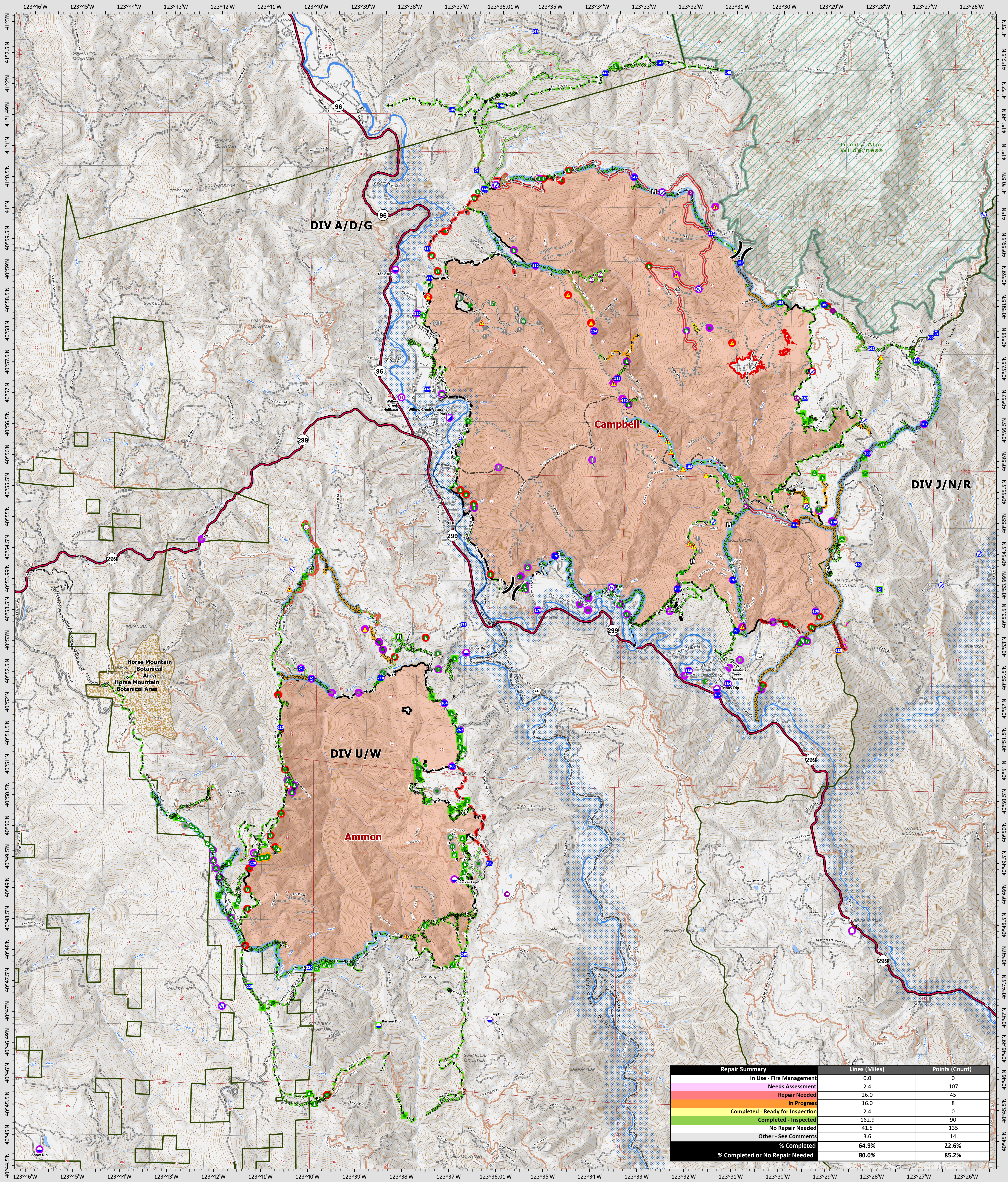


Suppression Repair Overview

9/21/2022

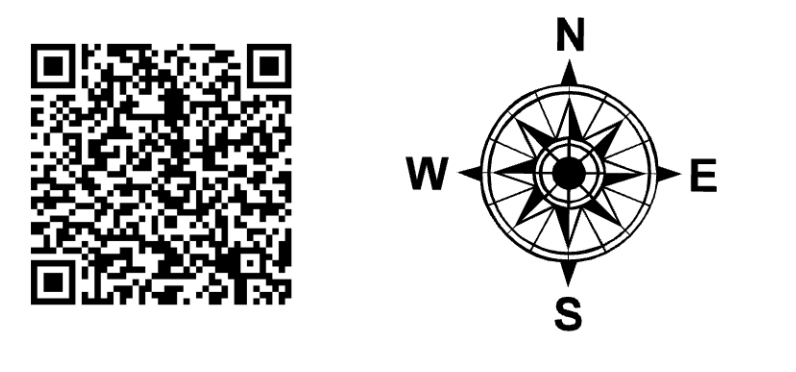


Repair Summary	Lines (Miles)	Points (Count)
In Use - Fire Management	0.0	0
Needs Assessment	2.4	107
Repair Needed	26.0	45
In Progress	16.0	8
Completed - Ready for Inspection	2.4	0
Completed - Inspected	162.9	90
No Repair Needed	41.5	135
Other - See Comments	3.6	14
% Completed	64.9%	22.6%
% Completed or No Repair Needed	80.0%	85.2%

SRF Lightning Complex
 CA-SRF-000620
 9/21/2022
 41,591 acres
 IR updated 9/15/2022

- Repair Status Point**
- Needs Assessment
 - Repair Needed
 - In Progress
 - Completed - Inspected
 - No Repair Needed
 - Other - See Comments
- Repair Status Line**
- In Use - Fire Management
 - Needs Assessment
 - Repair Needed
 - In Progress
 - Completed - Ready for Inspection
 - Completed - Inspected
 - No Repair Needed
 - Other - See Comments
 - Uncollected
 - Dip Site
 - Hellspot

- Hellbase
- Sling Site
- Unimproved Landing Area
- Division Break
- Incident Command Post
- Drop Point
- Staging Area
- Lockout
- Valley at Risk
- Other
- Gate
- Bridge
- Water Development or Draft Site
- Structure Wrap
- Stream Crossing
- Road Repair
- Retardant in Avoidance Area
- Resource Location
- Repair Point
- Landing or Log Deck
- Fence - Cut/Damaged
- Dozer Push
- Valve
- Culvert
- Clean Up Area
- Hazard
- Water Source
- Completed Dozer Line
- Completed Fuel Break
- Completed Hand Line
- Completed Road as Line
- Access or Improved Road
- Highlighted Feature
- Other
- Repair Line
- Road Repair
- Retardant Drop
- Future Strategic Fireline
- Wildfire Daily Fire Perimeter
- Wild & Scenic Rivers
- Wilderness



0 0.5 1 2 Miles
 Datum: North American 1983
 GIS Updated: 9/20/2022 1959