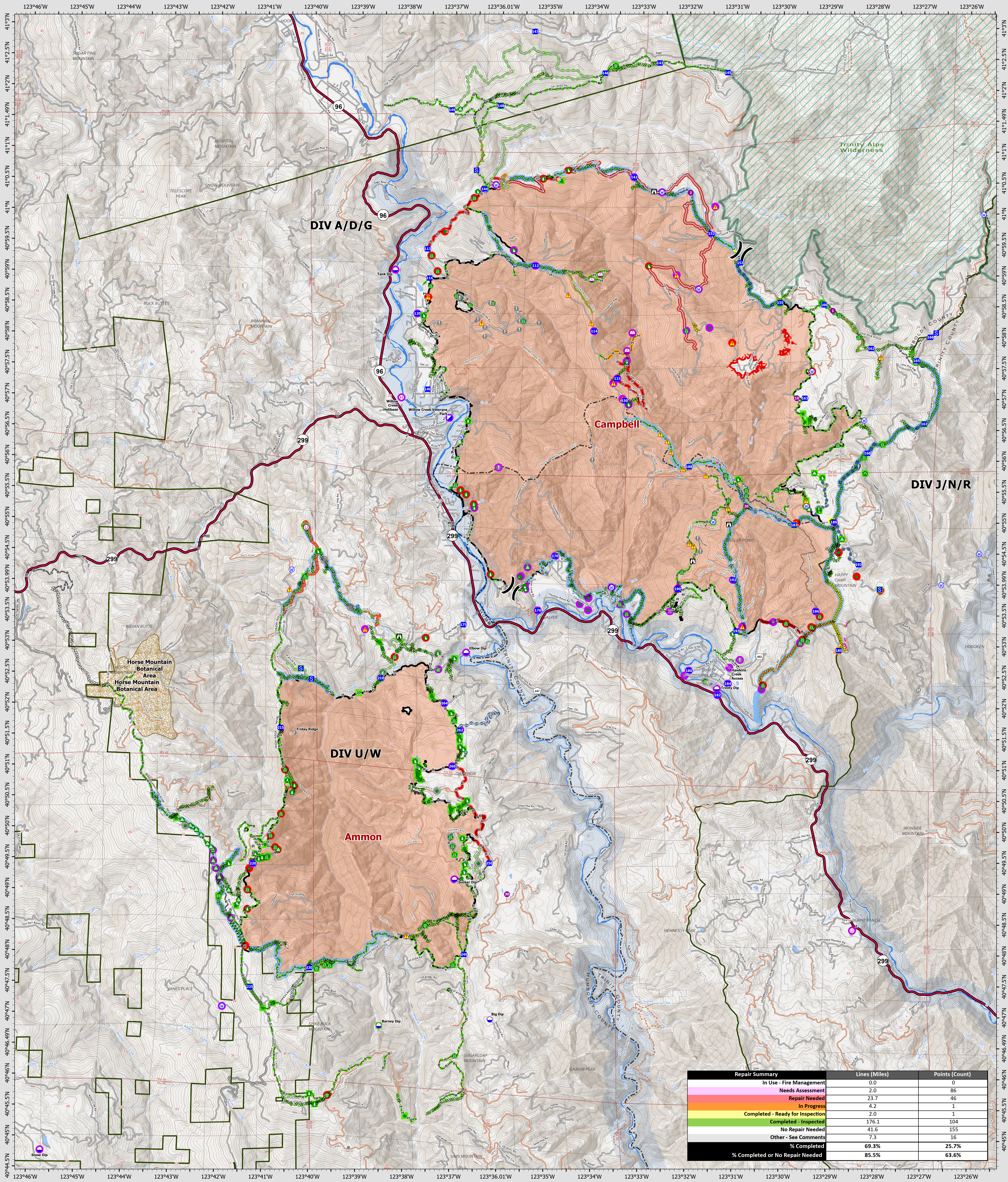


Suppression Repair Overview

9/24/2022



Repair Summary	Lines (Miles)	Points (Count)
In Use - Fire Management	0.0	0
Needs Assessment	2.0	86
Repair Needed	23.7	46
In Progress	4.2	1
Completed - Ready for Inspection	2.0	1
Completed - Inspected	176.1	104
No Repair Needed	41.6	155
Other - See Comments	7.3	16
% Completed	69.3%	25.7%
% Completed or No Repair Needed	85.5%	63.6%

SRF Lightning Complex
 CA-SRF-000620
 9/24/2022
 41,593 acres
 IR updated 9/22/2022

- Repair Status Point**
- Needs Assessment
 - Repair Needed
 - In Progress
 - Completed - Ready for Inspection
 - Completed - Inspected
 - No Repair Needed
 - Other - See Comments
- Repair Status Line**
- In Use - Fire Management
 - Needs Assessment
 - Repair Needed
 - In Progress
 - Completed - Ready for Inspection
 - Completed - Inspected
 - No Repair Needed
 - Other - See Comments
 - Uncolored
 - Dip Site
 - Other - See Comments
- Other Symbols**
- Hellbase
 - Sling Site
 - Unimproved Landing Area
 - Division Break
 - Incident Command Post
 - Drop Point
 - Staging Area
 - Lockout
 - Valley at Risk
 - Other
 - Gate
 - Bridge
 - Water Development or Draft Site
 - Structure Wrap
 - Stream Crossing
 - Road Repair
 - Retardant in Avoidance Area
 - Resource Location
 - Repair Point
 - Landing or Log Deck
 - Hazard Tree
 - Fence - Cut/Damaged
 - Dozer Push
 - Valve
 - Culvert
 - Clean Up Area
 - Hazard
 - Water Source
 - Completed Dozer Line
 - Completed Fuel Break
 - Completed Hand Line
 - Completed Road as Line
 - Access or Improved Road
 - Highlighted Feature
 - Other
 - Repair Line
 - Road Repair
 - Retardant Drop
 - Future Strategic Fireline
 - Wildfire Daily Fire Perimeter
 - Wild & Scenic Rivers
 - Wilderness

FOREST SERVICE
U.S. DEPARTMENT OF AGRICULTURE

SOUTHERN AREA
INCIDENT MANAGEMENT

BALDY MOUNTAIN
FIRE STATION

0 0.5 1 2 Miles

Datum: North American 1983
 GISS Updated: 9/23/2022 2017