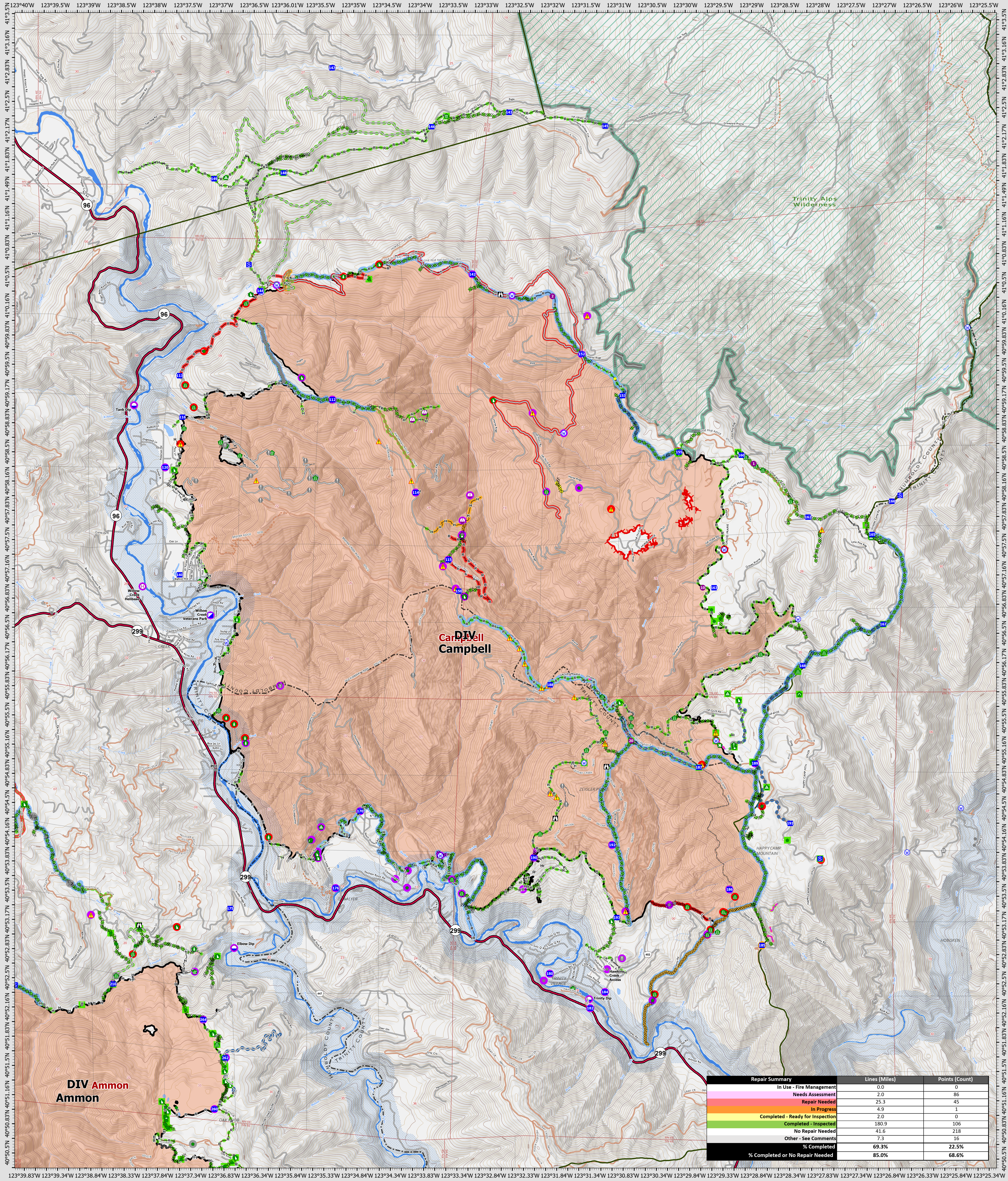


# Suppression Repair Campbell

9/25/2022



Repair Summary	Lines (Miles)	Points (Count)
In Use - Fire Management	0.0	0
Needs Assessment	2.0	86
Repair Needed	25.3	45
In Progress	4.9	1
Completed - Ready for Inspection	2.0	0
Completed - Inspected	180.9	106
No Repair Needed	41.6	218
Other - See Comments	7.3	16
<b>% Completed</b>	<b>69.3%</b>	<b>22.5%</b>
<b>% Completed or No Repair Needed</b>	<b>85.0%</b>	<b>68.6%</b>

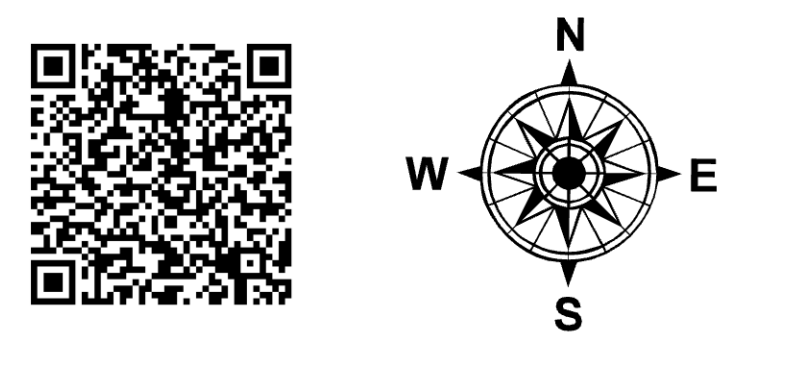
**SRF Lightning Complex**

CA-SRF-000620  
9/25/2022

41,593 acres  
IR updated 9/22/2022

- Repair Status Point**
- Needs Assessment
  - Repair Needed
  - In Progress
  - Completed - Inspected
  - No Repair Needed
  - Other - See Comments
- Repair Status Line**
- In Use - Fire Management
  - Repair Needed
  - In Progress
  - Completed - Ready for Inspection
  - Completed - Inspected
  - No Repair Needed
  - Other - See Comments
  - Uncollected
  - Dip Site
  - Helispot

- Helibase
- Sling Site
- Unimproved Landing Area
- Incident Command Post
- Drop Point
- Staging Area
- Lookout
- Value at Risk
- Other
- Gate
- Bridge
- Water Development or Draft Site
- Dip Site
- Helispot
- Road Repair
- Retardant in Avoidance Area
- Resource Location
- Repair Point
- Landing or Log Deck
- Hazard Tree
- Fence - Cut/Damaged
- Over Push
- Culvert
- Clean Up Area
- Hazard
- Water Source
- Completed Dozer Line
- Completed Hand Line
- Completed Road as Line
- Access or Improved Road
- Highlighted Feature
- Other
- Repair Line
- Road Repair
- Retardant Drop
- Future Strategic Fireline
- Wildfire Daily Fire Perimeter
- Wild & Scenic Rivers
- Wilderness



0 0.5 1 2 Miles  
Datum: North American 1983  
GISX Updated: 9/24/2022 2024