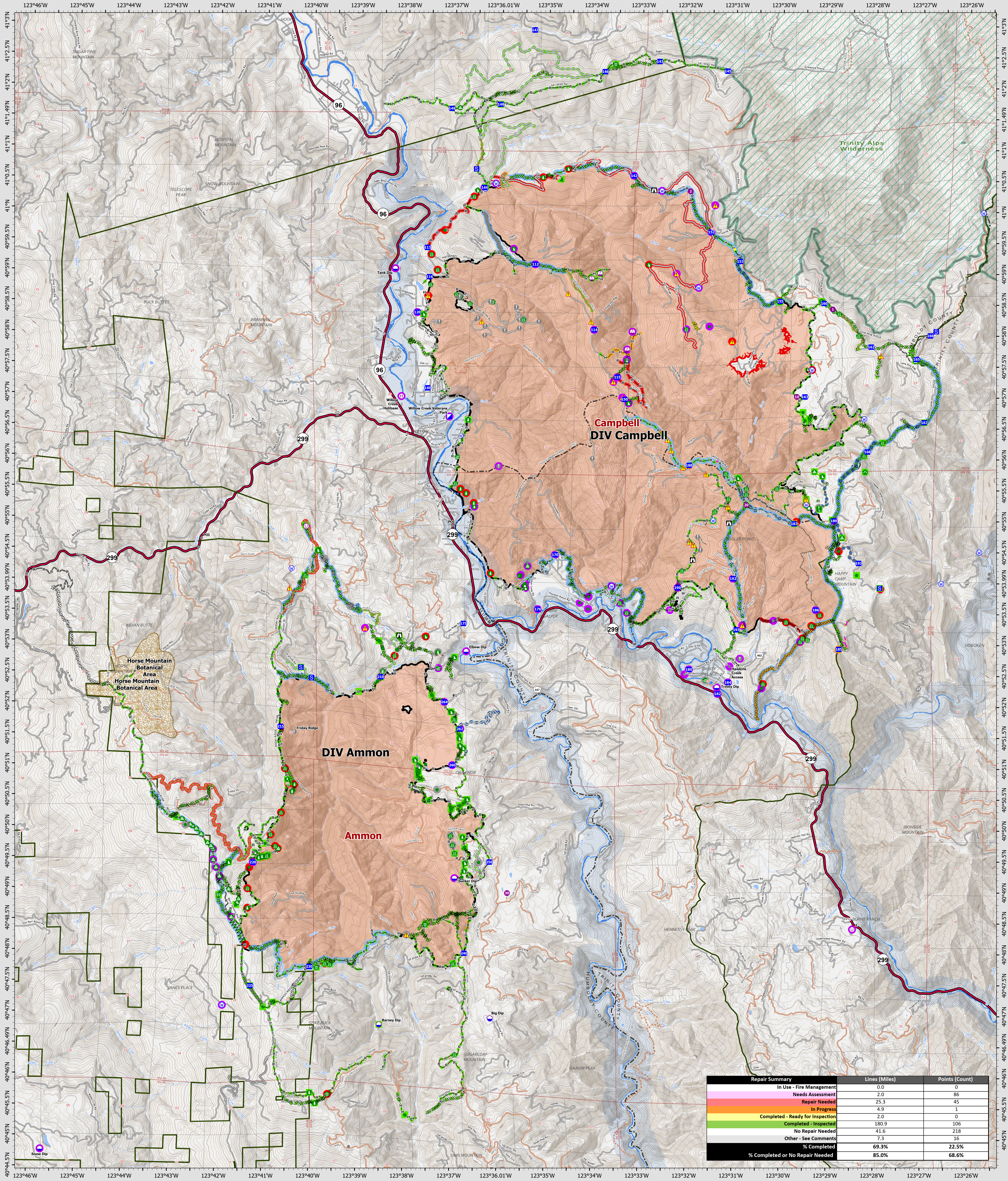


Suppression Repair Overview

9/25/2022



SRF Lightning Complex
 CA-SRF-000620
 9/25/2022
 41,593 acres
 IR updated 9/22/2022

- Repair Status Point**
- Needs Assessment
 - Repair Needed
 - In Progress
 - Completed - Inspected
 - No Repair Needed
 - Other - See Comments
- Repair Status Line**
- In Use - Fire Management
 - Needs Assessment
 - Repair Needed
 - In Progress
 - Completed - Ready for Inspection
 - Completed - Inspected
 - No Repair Needed
 - Other - See Comments
 - Contained
 - Uncountained
 - Dip Site
 - Hellspot
- Other Symbols**
- Hellbase
 - Sling Site
 - Unimproved Landing Area
 - Incident Command Post
 - Drop Point
 - Staging Area
 - Lookout
 - Value at Risk
 - Other
 - Gate
 - Bridge
 - Water Development or Draft Site
 - Structure Wrap
 - Stream Crossing
 - Road Repair
 - Retardant in Avoidance Area
 - Resource Location
 - Repair Point
 - Landing or Log Deck
 - Hazard Tree
 - Fence - Cut/Damaged
 - Door Push
 - Culvert
 - Clean Up Area
 - Hazard
 - Water Source
 - Completed Dozer Line
 - Completed Fuel Break
 - Completed Hand Line
 - Completed Road as Line
 - Access or Improved Road
 - Highlighted Feature
 - Other
 - Repair Line
 - Road Repair
 - Retardant Drop
 - Future Strategic Fireline
 - Wildfire Daily Fire Perimeter
 - Wild & Scenic Rivers
 - Wilderness



Datum: North American 1983
 GISS Updated: 9/24/2022 2020