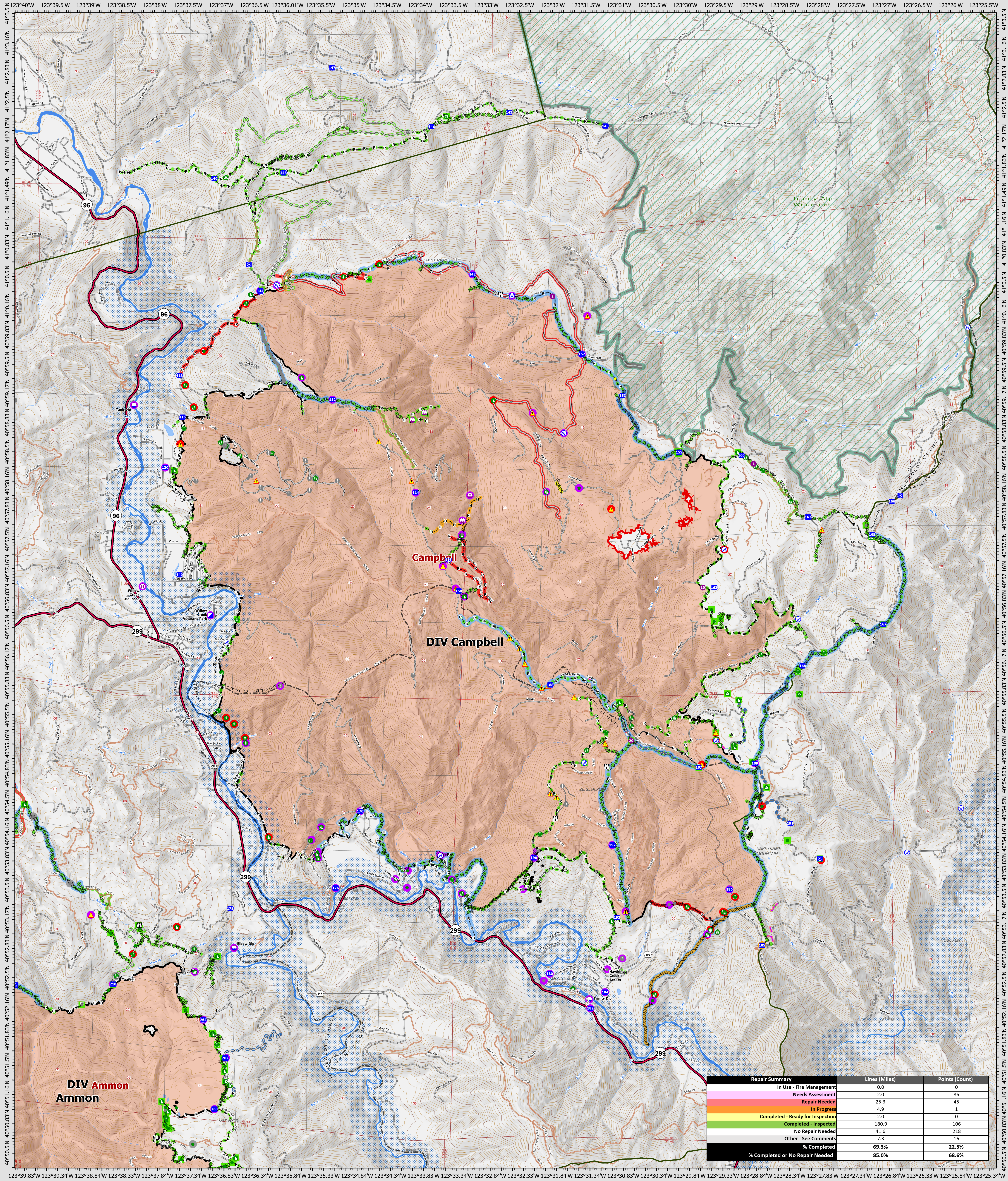


Suppression Repair Campbell

9/26/2022

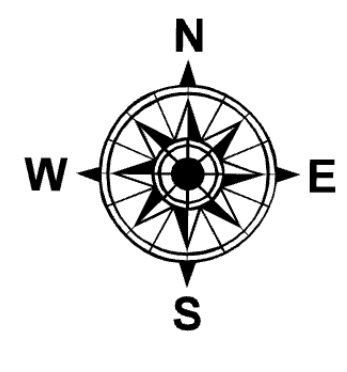


Repair Summary	Lines (Miles)	Points (Count)
In Use - Fire Management	0.0	0
Needs Assessment	2.0	86
Repair Needed	25.3	45
In Progress	4.9	1
Completed - Ready for Inspection	2.0	0
Completed - Inspected	180.9	106
No Repair Needed	41.6	218
Other - See Comments	7.3	16
% Completed	69.3%	22.5%
% Completed or No Repair Needed	85.0%	68.6%

SRF Lightning Complex
 CA-SRF-000620
 9/26/2022
 41,596 acres
 IR updated 9/24/2022

- Repair Status Point**
- Needs Assessment
 - Repair Needed
 - In Progress
 - Completed - Inspected
 - No Repair Needed
 - Other - See Comments
- Repair Status Line**
- In Use - Fire Management
 - Needs Assessment
 - Repair Needed
 - In Progress
 - Completed - Ready for Inspection
 - Completed - Inspected
 - No Repair Needed
 - Other - See Comments
 - Contained
 - Uncountained
 - Dip Site
 - Hellspot

- Hellbase
- Sling Site
- Unimproved Landing Area
- Incident Command Post
- Drop Point
- Staging Area
- Lookout
- Value at Risk
- Other
- Gate
- Bridge
- Water Development or Draft Site
- Structure Wrap
- Road Repair
- Retardant in Avoidance Area
- Resource Location
- Repair Point
- Landing or Log Deck
- Hazard Tree
- Fence - Cut/Damaged
- Dozer Push
- Culvert
- Clean Up Area
- Hazard
- Water Source
- Completed Dozer Line
- Completed Hand Line
- Completed Road as Line
- Access or Improved Road
- Highlighted Feature
- Other
- Repair Line
- Road Repair
- Retardant Drop
- Future Strategic Fireline
- Wildfire Daily Fire Perimeter
- Wild & Scenic Rivers
- Wilderness



0 0.5 1 2 Miles

Datum: North American 1983
 GISX Updated: 9/25/2022 1808