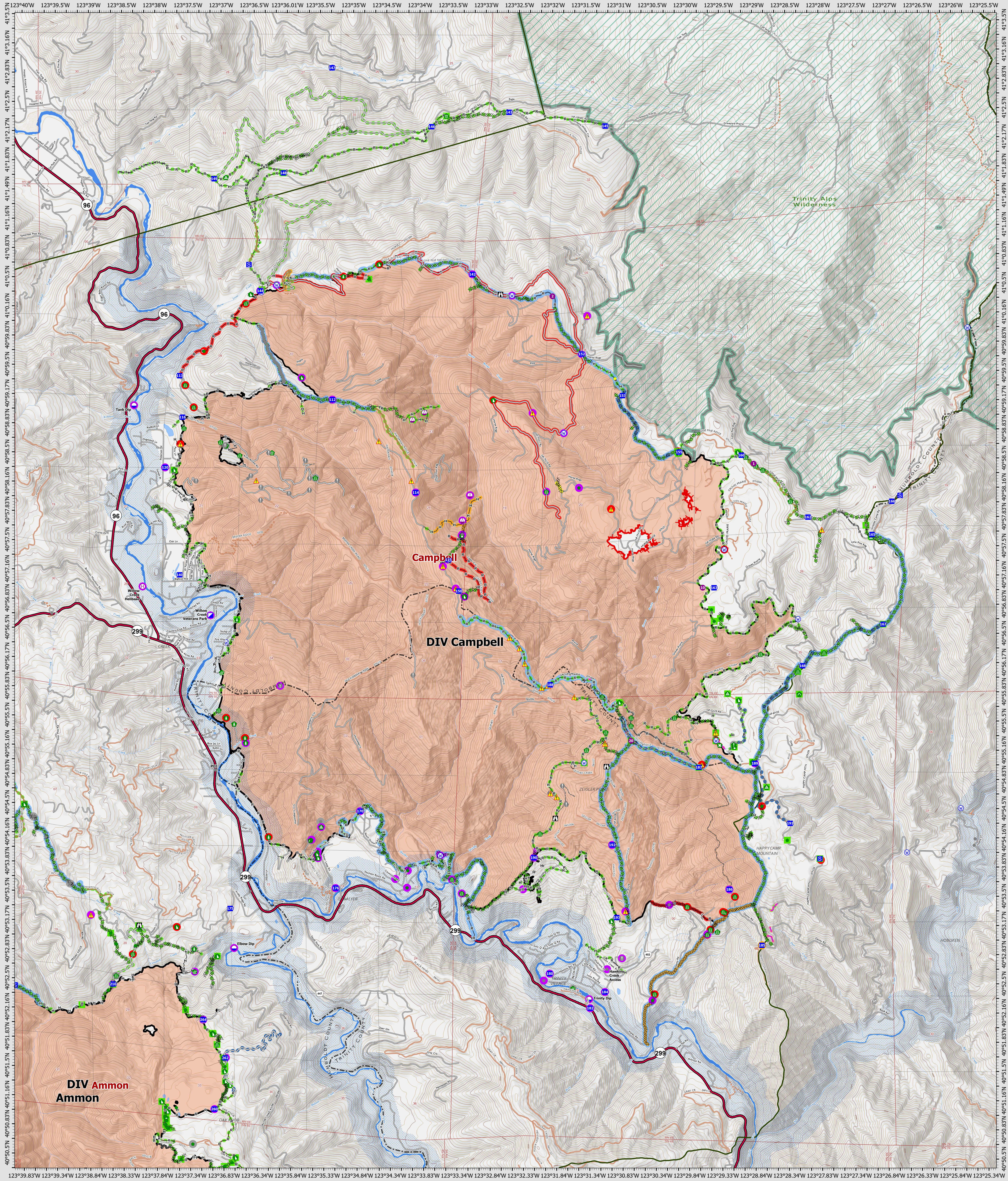


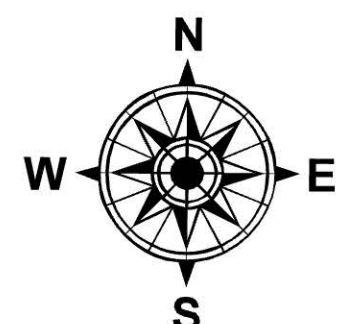
Suppression Repair Campbell

9/27/2022



SRF Lightning Complex
 CA-SRF-000620
 9/27/2022
 41,596 acres
 IR updated 9/24/2022

Repair Status Point	Repair Status Line	Other Symbols	Other Symbols	Other Symbols
● Needs Assessment	— In Use - Fire Management	○ Helibase	○ Road Repair	— Completed Hand Line
● Repair Needed	— In Use - Fire Management	○ Sling Site	○ Retardant in Avoidance Area	— Completed Road as Line
● In Progress	— Repair Needed	○ Unimproved Landing Area	○ Resource Location	— Access or Improved Road
● Completed - Inspected	— In Progress	○ Incident Command Post	○ Repair Point	— Highlighted Feature
● No Repair Needed	— Completed - Ready for Inspection	○ Drop Point	○ Landing or Log Deck	— Other
● Other - See Comments	— Completed - Inspected	○ Staging Area	○ Hazard Tree	— Repair Line
	— No Repair Needed	○ Lookout	○ Fence - Cut/Damaged	— Road Repair
	— Other - See Comments	○ Value at Risk	○ Dozer Push	— Retardant Drop
	— Contained	○ Other	○ Culvert	— Future Strategic Fireline
	— Uncountained	○ Gate	○ Clean Up Area	— Wildfire Daily Fire Perimeter
	— Dip Site	○ Bridge	○ Hazard	— Wild & Scenic Rivers
	— Helispot	○ Water Development or Draft Site	○ Water Source	— Wilderness
		○ Structure Wrap	○ Completed Dozer Line	



0 0.5 1 2 Miles
 Datum: North American 1983
 GIS Updated: 9/27/2022 0704