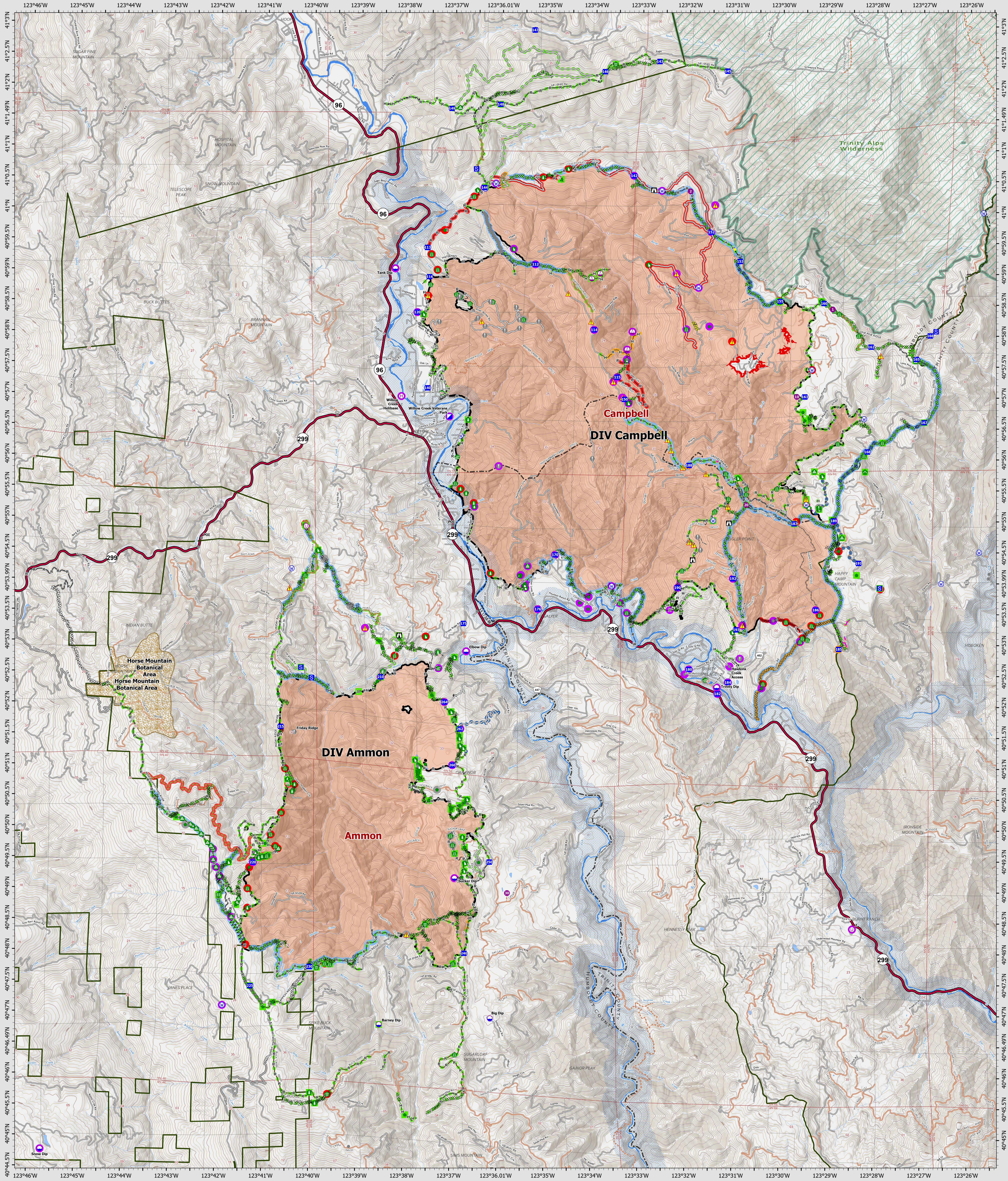


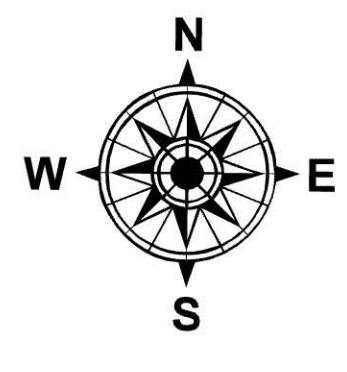
Suppression Repair Overview

9/27/2022



SRF Lightning Complex
 CA-SRF-000620
 9/27/2022
 41,596 acres
 IR updated 9/24/2022

- | | | | | |
|---|---|---|--|--|
| <p>Repair Status Point</p> <ul style="list-style-type: none"> ● Needs Assessment ● Repair Needed ● In Progress ● Completed - Inspected ● No Repair Needed ● Other - See Comments | <p>Repair Status Line</p> <ul style="list-style-type: none"> — In Use - Fire Management — Needs Assessment — Repair Needed — In Progress — Completed - Ready for Inspection — Completed - Inspected — No Repair Needed — Other - See Comments — Contained — Uncountained — Dip Site — Hellsport | <ul style="list-style-type: none"> ○ Helibase ○ Sling Site ○ Unimproved Landing Area ○ Incident Command Post ○ Drop Point ○ Staging Area ○ Lookout ○ Value at Risk ○ Other ○ Gate ○ Bridge ○ Water Development or Draft Site ○ Structure Wrap ○ Stream Crossing | <ul style="list-style-type: none"> ○ Road Repair ○ Retardant in Avoidance Area ○ Resource Location ○ Repair Point ○ Landing or Log Deck ○ Hazard Tree ○ Fence - Cut/Damaged ○ Door Push ○ Culvert ○ Clean Up Area ○ Hazard ○ Water Source ○ Completed Dozer Line | <ul style="list-style-type: none"> — Completed Fuel Break — Completed Hand Line — Completed Road as Line — Access or Improved Road — Highlighted Feature — Other — Repair Line — Road Repair — Retardant Drop — Future Strategic Fireline — Wildfire Daily Fire Perimeter — Wild & Scenic Rivers — Wilderness |
|---|---|---|--|--|



0 0.5 1 2 Miles
 Datum: North American 1983
 GIS Updated: 9/27/2022 0701