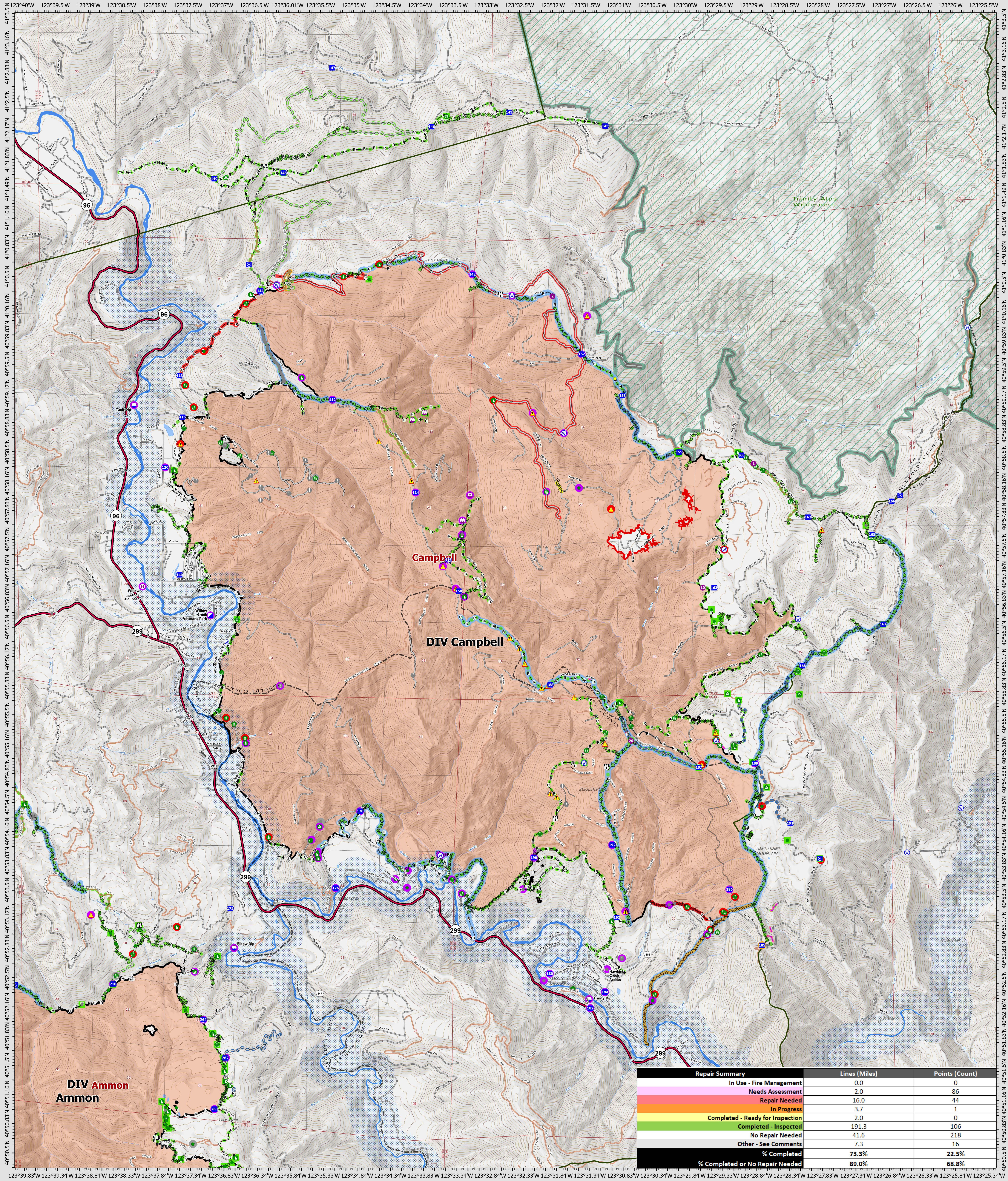


# Suppression Repair Campbell

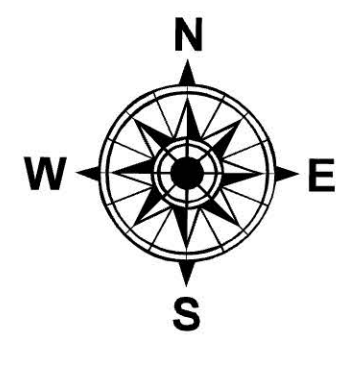
9/28/2022



Repair Summary	Lines (Miles)	Points (Count)
In Use - Fire Management	0.0	0
Needs Assessment	2.0	86
Repair Needed	16.0	44
In Progress	3.7	1
Completed - Ready for Inspection	2.0	0
Completed - Inspected	191.3	106
No Repair Needed	41.6	218
Other - See Comments	7.3	16
<b>% Completed</b>	<b>73.3%</b>	<b>22.5%</b>
<b>% Completed or No Repair Needed</b>	<b>89.0%</b>	<b>68.8%</b>

**SRF Lightning Complex**  
 CA-SRF-000620  
 9/28/2022  
 41,596 acres  
 IR updated 9/24/2022

- Repair Status Point**
- Needs Assessment
  - Repair Needed
  - In Progress
  - Completed - Inspected
  - No Repair Needed
  - Other - See Comments
- Repair Status Line**
- In Use - Fire Management
  - Needs Assessment
  - Repair Needed
  - In Progress
  - Completed - Ready for Inspection
  - Completed - Inspected
  - No Repair Needed
  - Other - See Comments
  - Contained
  - Uncontained
  - Dip Site
  - Hellspot
- Other Symbols**
- Helibase
  - Sling Site
  - Unimproved Landing Area
  - Incident Command Post
  - Drop Point
  - Staging Area
  - Lookout
  - Value at Risk
  - Other
  - Gate
  - Bridge
  - Water Development or Draft Site
  - Dip Site
  - Hellspot
- Other Symbols**
- Road Repair
  - Retardant in Avoidance Area
  - Resource Location
  - Repair Point
  - Landing or Log Deck
  - Hazard Tree
  - Fence - Cut/Damaged
  - Dozer Push
  - Culvert
  - Clean Up Area
  - Hazard
  - Water Source
  - Completed Dozer Line
- Other Symbols**
- Completed Hand Line
  - Completed Road as Line
  - Access or Improved Road
  - Highlighted Feature
  - Other
  - Repair Line
  - Road Repair
  - Retardant Drop
  - Future Strategic Fireline
  - Wildfire Daily Fire Perimeter
  - Wild & Scenic Rivers
  - Wilderness



0 0.5 1 2 Miles

Datum: North American 1983  
 GISS Updated: 9/27/2022 2359