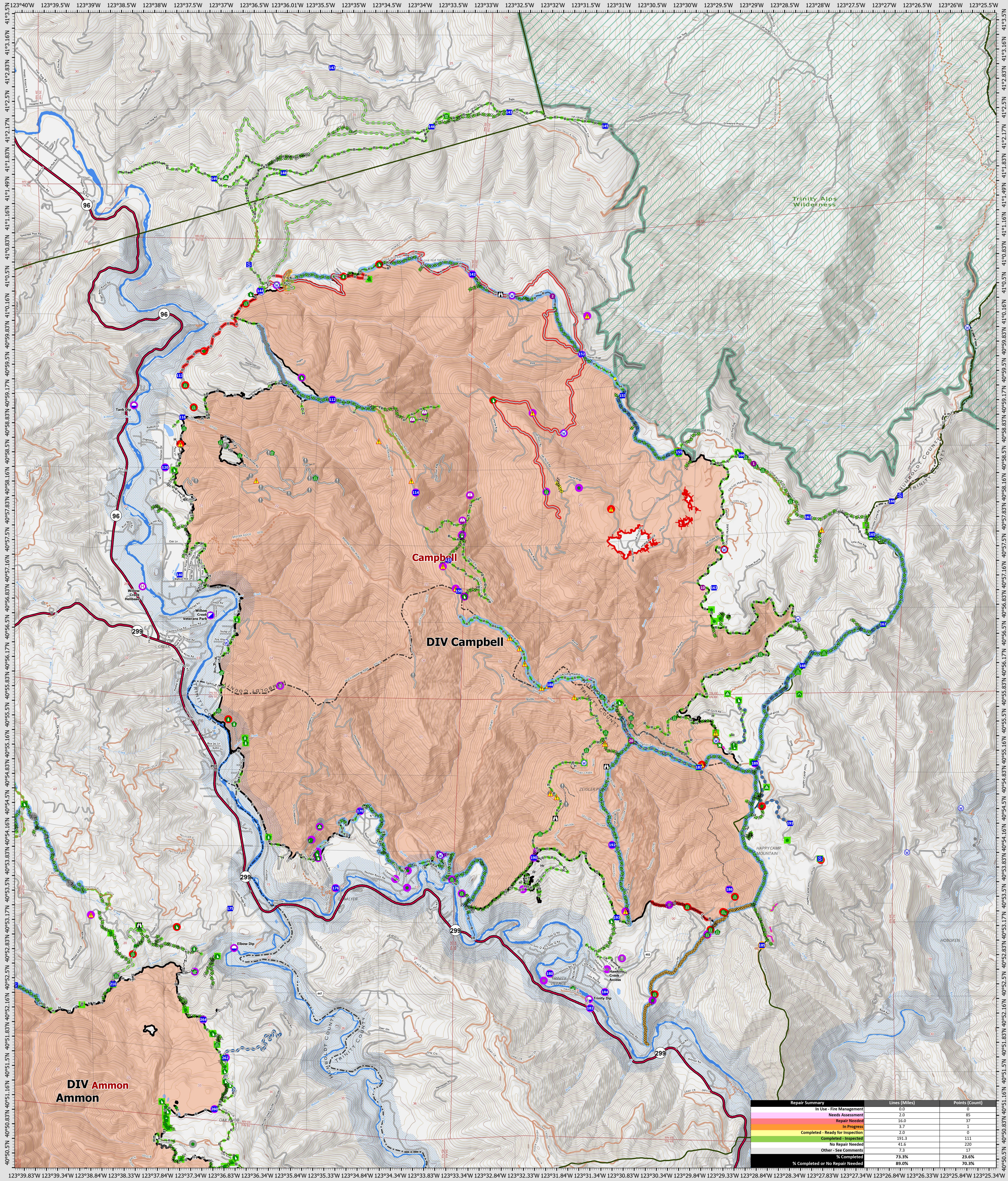


Suppression Repair Campbell

9/29/2022

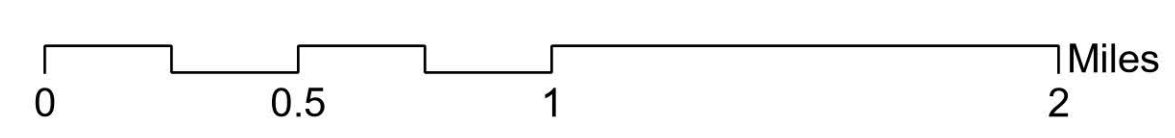
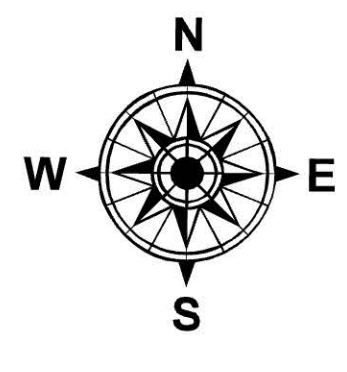


Repair Summary	Lines (Miles)	Points (Count)
In Use - Fire Management	0.0	0
Needs Assessment	2.0	85
Repair Needed	16.0	37
In Progress	1.7	1
Completed - Ready for Inspection	2.0	0
Completed - Inspected	191.3	111
No Repair Needed	41.6	220
Other - See Comments	7.3	11
% Completed	73.3%	23.6%
% Completed or No Repair Needed	89.0%	70.3%

SRF Lightning Complex
 CA-SRF-000620
 9/29/2022
 41,596 acres
 IR updated 9/24/2022

- Repair Status Point**
- Needs Assessment
 - Repair Needed
 - In Progress
 - Completed - Inspected
 - No Repair Needed
 - Other - See Comments
- Repair Status Line**
- In Use - Fire Management
 - Retardant in Avoidance Area
 - Resource Location
 - Repair Point
 - Landing or Log Deck
 - Hazard Tree
 - Fence - Cut/Damaged
 - Dozer Push
 - Culvert
 - Clean Up Area
 - Hazard
 - Water Source
 - Completed Dozer Line
- Other Symbols**
- Helibase
 - Sling Site
 - Unimproved Landing Area
 - Incident Command Post
 - Drop Point
 - Staging Area
 - Lookout
 - Value at Risk
 - Other
 - Gate
 - Bridge
 - Water Development or Draft Site
 - Dip Site
 - Helispot

- Completed Hand Line
- Completed Road as Line
- Access or Improved Road
- Highlighted Feature
- Other
- Repair Line
- Road Repair
- Retardant Drop
- Future Strategic Fireline
- Wildfire Daily Fire Perimeter
- Wild & Scenic Rivers
- Wilderness



Datum: North American 1983
 GIS Updated: 9/28/2022 23:15