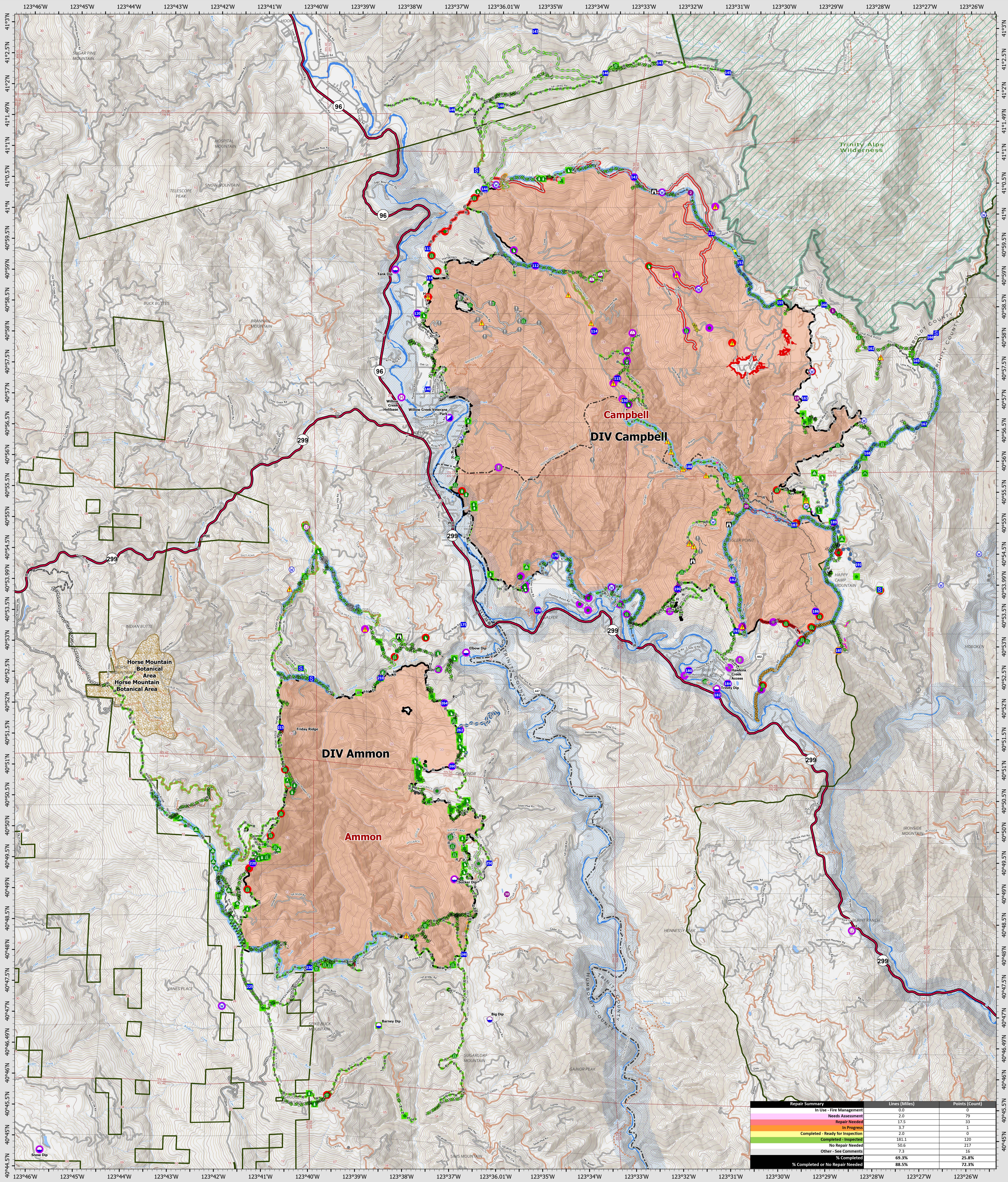


# Suppression Repair Overview

10/5/2022



**SRF Lightning Complex**  
 CA-SRF-000620  
 10/5/2022  
 41,598 acres  
 IR updated 10/1/2022

- Repair Status Point**
- Needs Assessment
  - Repair Needed
  - In Progress
  - Completed - Inspected
  - No Repair Needed
  - Other - See Comments
- Repair Status Line**
- In Use - Fire Management
  - Needs Assessment
  - Repair Needed
  - In Progress
  - Completed - Ready for Inspection
  - Completed - Inspected
  - No Repair Needed
  - Other - See Comments
  - Contained
  - Uncollected
  - Dip Site
  - Hellspot
- Other Symbols**
- Hellbase
  - Sling Site
  - Unimproved Landing Area
  - Incident Command Post
  - Drop Point
  - Staging Area
  - Lookout
  - Value at Risk
  - Other
  - Gate
  - Bridge
  - Water Development or Draft Site
  - Structure Wrap
  - Stream Crossing

- Road Repair
- Retardant in Avoidance Area
- Resource Location
- Repair Point
- Landing or Log Deck
- Hazard Tree
- Fence - Cut/Damaged
- Door Push
- Culvert
- Clean Up Area
- Hazard
- Water Source
- Completed Dozer Line
- Completed Fuel Break
- Completed Hand Line
- Completed Road as Line
- Access or Improved Road
- Highlighted Feature
- Other
- Repair Line
- Road Repair
- Retardant Drop
- Future Strategic Fireline
- Wildfire Daily Fire Perimeter
- Wild & Scenic Rivers
- Wilderness

Datum: North American 1983  
 GIS Updated: 10/5/2022 06:34