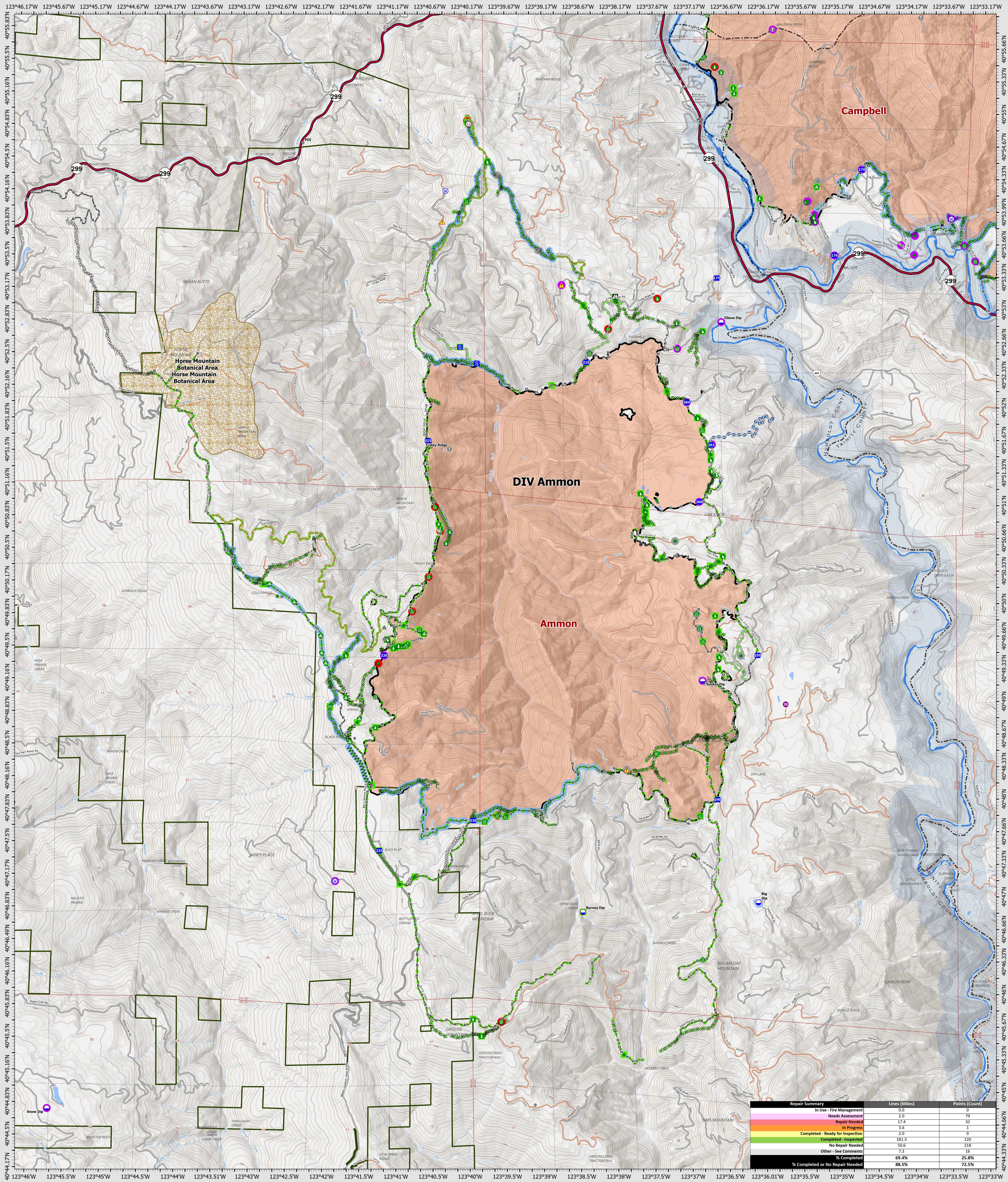


Suppression Repair Ammon

10/7/2022



| Repair Status | Lines (Miles) | Points (Count) |
|--|---------------|----------------|
| In Use - Fire Management | 0.0 | 0 |
| Needs Assessment | 2.0 | 79 |
| Repair Needed | 17.4 | 32 |
| In Progress | 3.6 | 1 |
| Completed - Ready for Inspection | 2.0 | 0 |
| Completed - Inspected | 181.3 | 120 |
| No Repair Needed | 50.6 | 218 |
| Other - See Comments | 7.3 | 16 |
| % Completed | 69.4% | 25.8% |
| % Completed or No Repair Needed | 88.5% | 72.5% |

SRF Lightning Complex

CA-SRF-000620
10/7/2022

41,598 acres
IR updated 10/1/2022

- Repair Status Point**
- Needs Assessment
 - Repair Needed
 - Completed - Inspected
 - No Repair Needed
 - Other - See Comments
- Repair Status Line**
- In Use - Fire Management
 - Needs Assessment
 - Repair Needed
 - In Progress
 - Completed - Ready for Inspection
 - Completed - Inspected
 - No Repair Needed
 - Other - See Comments
- Drop Point**
- Drop Point
 - Staging Area
 - Lookout
 - Value at Risk
 - Other
 - Water Development or Draft Site
 - Structure Wrap
 - Stream Crossing
 - Road Repair
 - Repair Point
 - Landing or Log Deck
 - Hazard Tree
 - Dozer Push
 - Culvert

- Clean Up Area
- Hazard
- Water Source
- Completed Dozer Line
- Completed Fuel Break
- Completed Hand Line
- Completed Road as Line
- Access or Improved Road
- Other
- Road Repair
- Future Strategic Fireline
- Wildfire Daily Fire Perimeter
- Wild & Scenic Rivers

Datum: North American 1983
GISS Updated: 10/7/2022 07:30