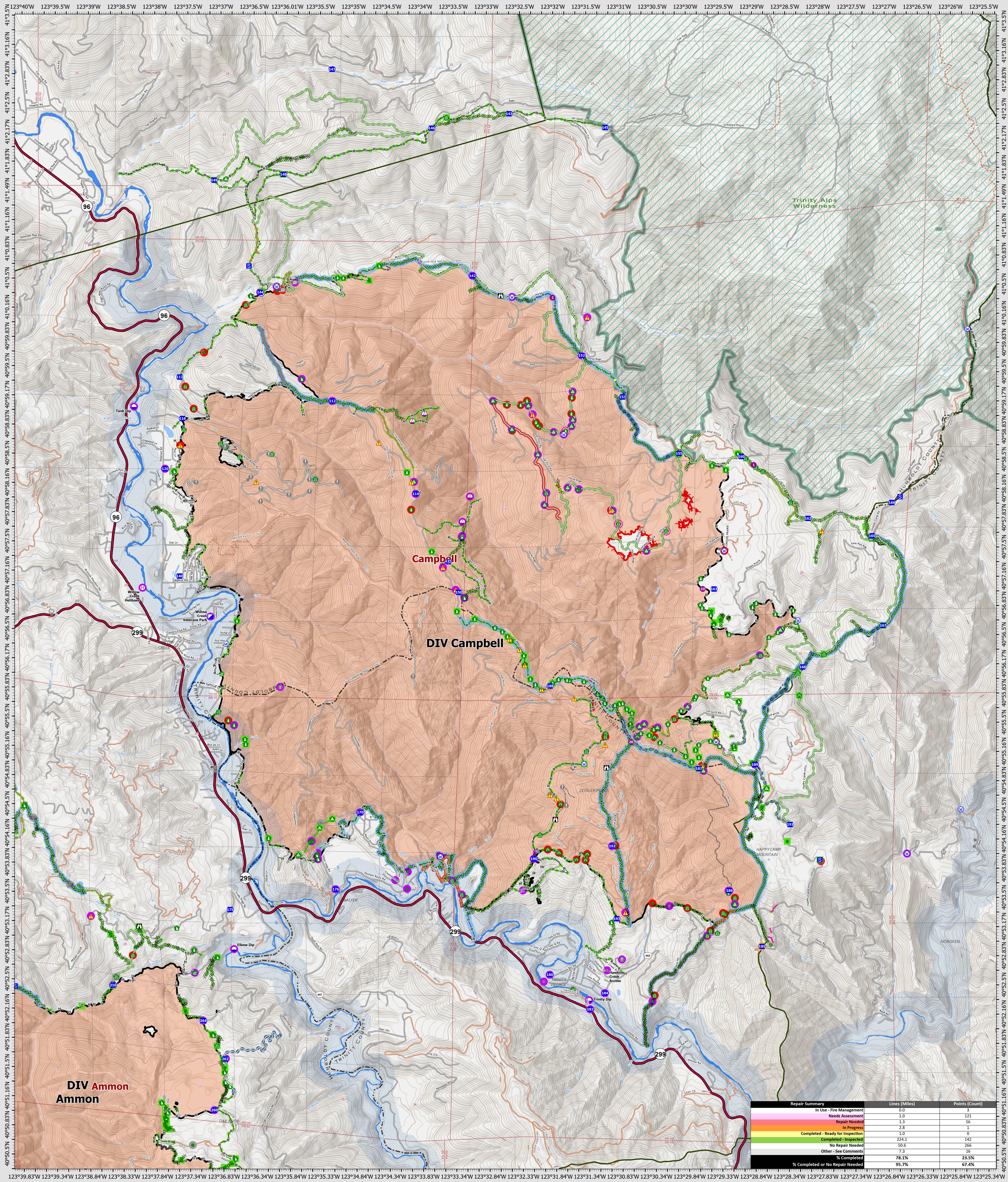


# Suppression Repair Campbell

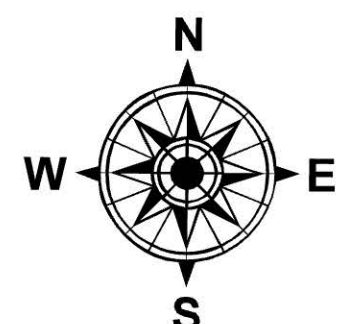
10/27/2022



Repair Summary	Lines (Miles)	Points (Count)
In Use - Fire Management	0.0	3
Needs Assessment	1.0	121
Repair Needed	1.3	56
In Progress	2.8	1
Completed - Ready for Inspection	1.0	0
Completed - Inspected	224.1	142
No Repair Needed	50.6	266
Other - See Comments	7.3	16
% Completed	78.1%	23.5%
% Completed or No Repair Needed	95.7%	67.4%

**SRF Lightning Complex**  
 CA-SRF-000620  
 10/27/2022  
 41,598 acres  
 IR updated 10/1/2022

- Repair Status Point**
- In Use - Fire Management
  - Needs Assessment
  - Repair Needed
  - In Progress
  - Completed - Inspected
  - No Repair Needed
  - Other - See Comments
- Repair Status Line**
- In Use - Fire Management
  - Needs Assessment
  - Repair Needed
  - In Progress
  - Completed - Ready for Inspection
  - Completed - Inspected
  - No Repair Needed
  - Other - See Comments
  - Uncountained
  - Dip Site
  - Hellspot
- Other Symbols**
- Hellbase
  - Sling Site
  - Unimproved Landing Area
  - Incident Command Post
  - Drop Point
  - Staging Area
  - Lookout
  - Value at Risk
  - Other
  - Gate
  - Bridge
  - Water Development or Draft Site
  - Dip Site
  - Structure Wrap
  - Road Repair
- Other Symbols**
- Retardant in Avoidance Area
  - Resource Location
  - Repair Point
  - Landing or Log Deck
  - Hazard Tree
  - Fence - Cut/Damaged
  - Dozer Push
  - Culvert
  - Clean Up Area
  - Hazard
  - Water Source
  - Completed Dozer Line
  - Completed Hand Line
- Other Symbols**
- Completed Road as Line
  - Access or Improved Road
  - Highlighted Feature
  - Other
  - Repair Line
  - Road Repair
  - Retardant Drop
  - Future Strategic Fireline
  - Wildfire Daily Fire Perimeter
  - Wild & Scenic Rivers
  - Wilderness



0 0.5 1 2 Miles  
 Datum: North American 1983  
 GISS Updated: 10/26/2022 1332