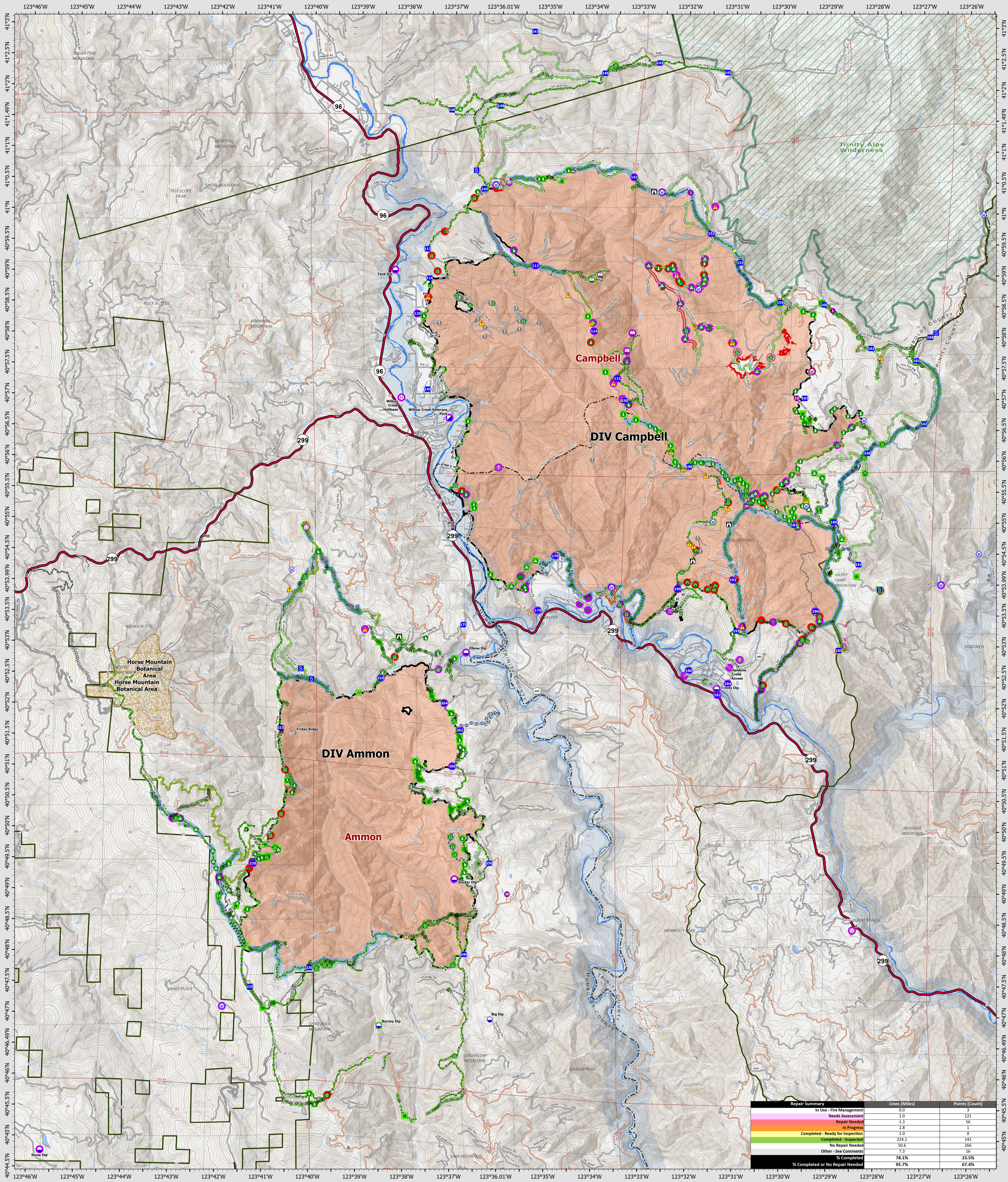


Suppression Repair Overview

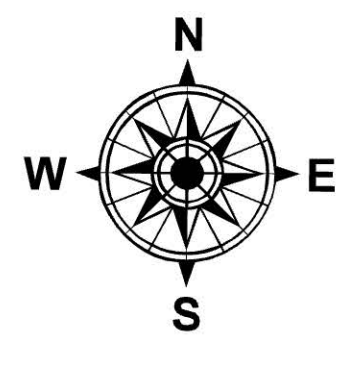
10/27/2022



Repair Summary		Lines (Miles)	Points (Count)
In Use - Fire Management		0.0	3
Needs Assessment		1.0	121
Repair Needed		1.3	56
In Progress		2.8	11
Completed - Ready for Inspection		1.0	0
Completed - Inspected		224.1	142
No Repair Needed		50.6	266
Other - See Comments		1.3	16
% Completed		78.1%	23.5%
% Completed or No Repair Needed		95.7%	67.4%

SRF Lightning Complex
 CA-SRF-000620
 10/27/2022
 41,598 acres
 IR updated 10/1/2022

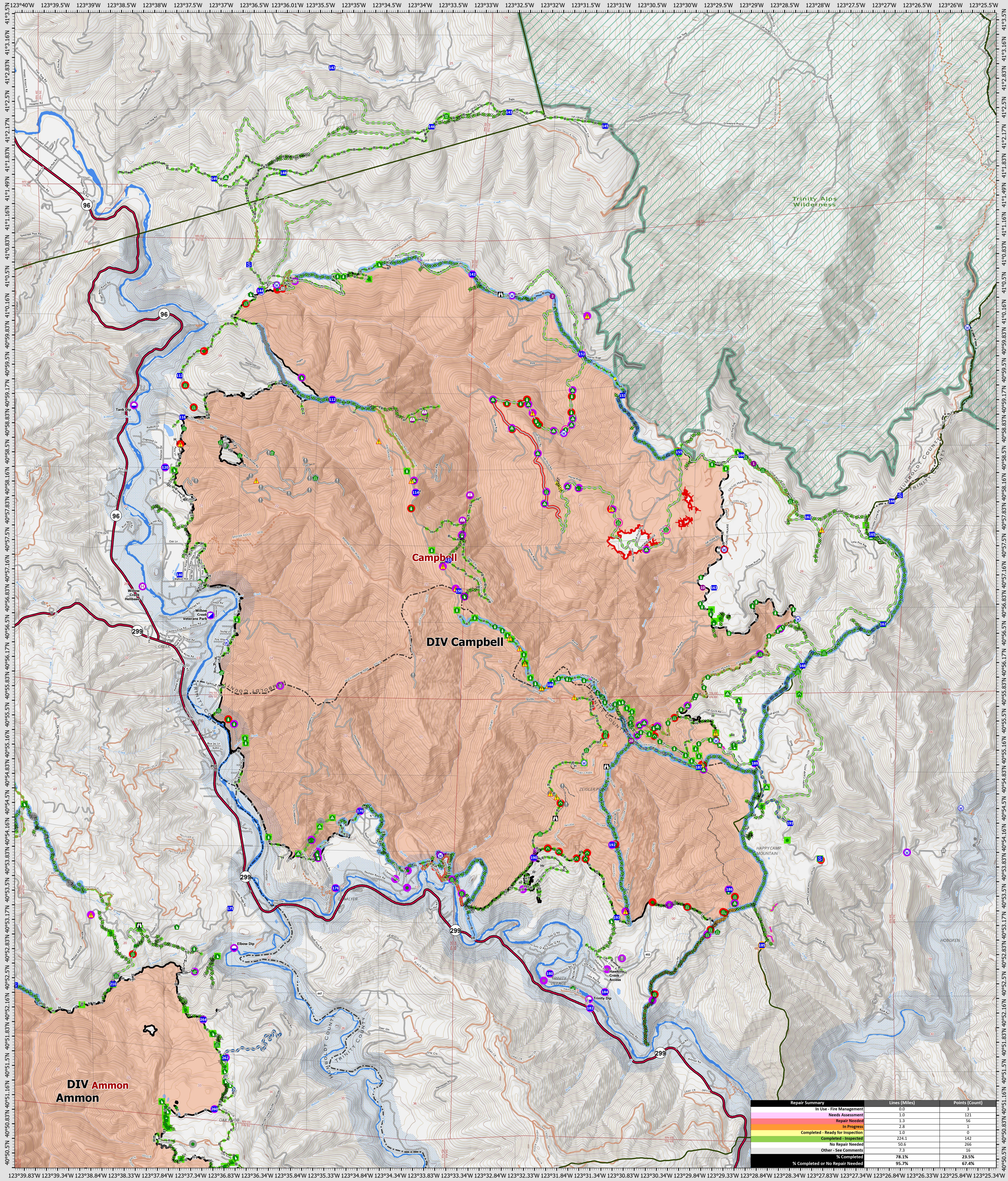
- Repair Status Point**
- In Use - Fire Management
 - Needs Assessment
 - Repair Needed
 - In Progress
 - Completed - Inspected
 - No Repair Needed
 - Other - See Comments
- Repair Status Line**
- In Use - Fire Management
 - Needs Assessment
 - Repair Needed
 - In Progress
 - Completed - Ready for Inspection
 - Completed - Inspected
 - No Repair Needed
 - Other - See Comments
 - Uncollected
 - Dip Site
 - Helispot
- Other Symbols**
- Helibase
 - Sling Site
 - Unimproved Landing Area
 - Incident Command Post
 - Drop Point
 - Staging Area
 - Lookout
 - Value at Risk
 - Other
 - Gate
 - Bridge
 - Water Development or Draft Site
 - Structure Wrap
 - Stream Crossing
 - Road Repair
 - Retardant in Avoidance Area
 - Resource Location
 - Repair Point
 - Landing or Log Deck
 - Hazard Tree
 - Fence - Cut/Damaged
 - Door Push
 - Culvert
 - Clean Up Area
 - Hazard
 - Water Source
 - Completed Dozer Line
 - Completed Fuel Break
 - Completed Hand Line
 - Completed Road as Line
 - Access or Improved Road
 - Highlighted Feature
 - Other
 - Repair Line
 - Road Repair
 - Retardant Drop
 - Future Strategic Fireline
 - Wildfire Daily Fire Perimeter
 - Wild & Scenic Rivers
 - Wilderness



0 0.5 1 2 Miles
 Datum: North American 1983
 GISS Updated: 10/26/2022 13:29

Suppression Repair Campbell

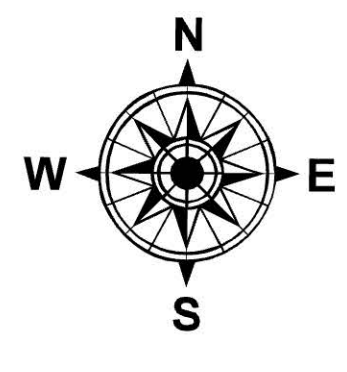
10/27/2022



Repair Summary	Lines (Miles)	Points (Count)
In Use - Fire Management	0.0	3
Needs Assessment	1.0	121
Repair Needed	1.3	56
In Progress	2.8	1
Completed - Ready for Inspection	1.0	0
Completed - Inspected	224.1	142
No Repair Needed	50.6	266
Other - See Comments	7.3	16
% Completed	78.1%	23.5%
% Completed or No Repair Needed	95.7%	67.4%

SRF Lightning Complex
 CA-SRF-000620
 10/27/2022
 41,598 acres
 IR updated 10/1/2022

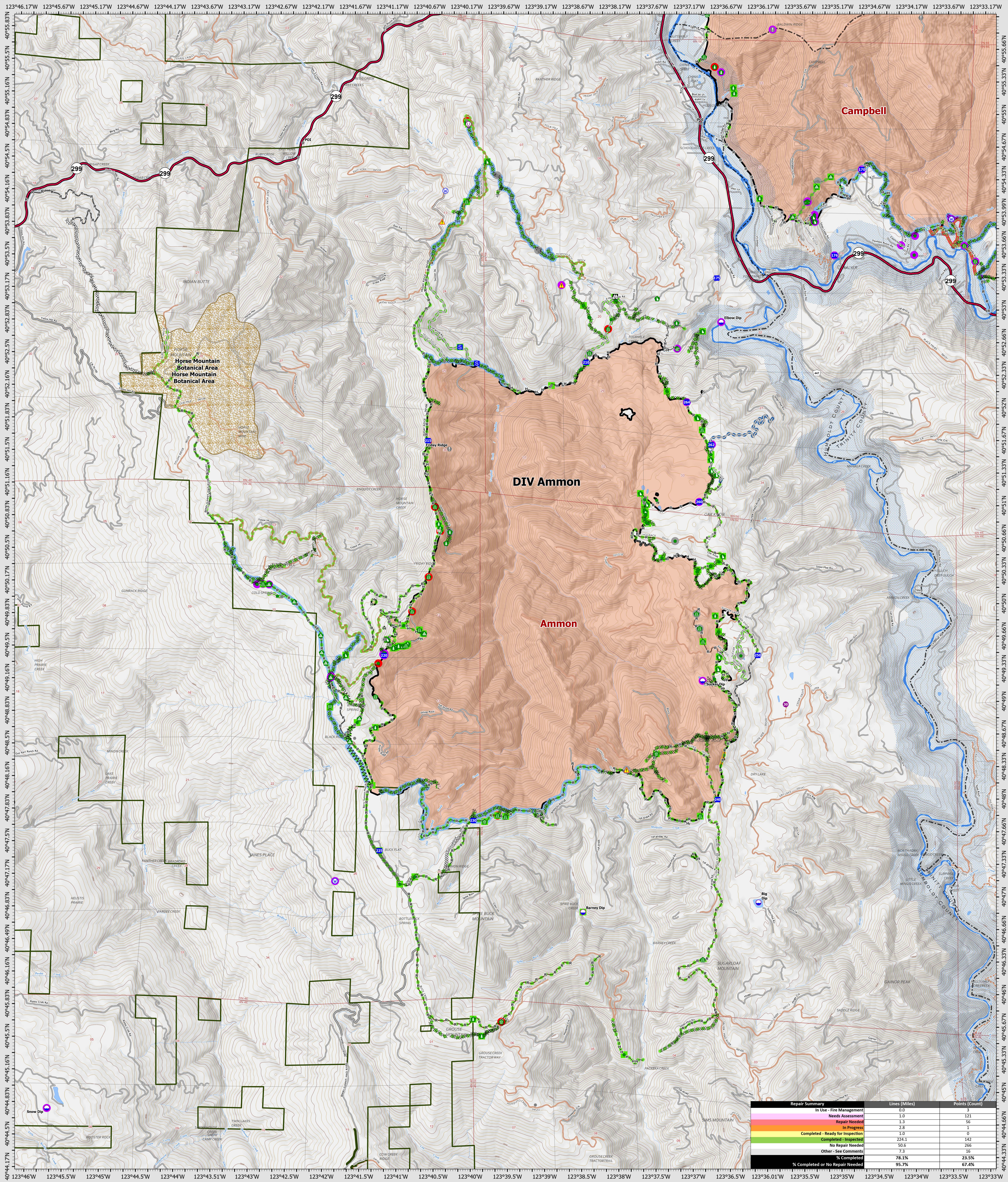
- Repair Status Point**
- In Use - Fire Management
 - Needs Assessment
 - Repair Needed
 - In Progress
 - Completed - Inspected
 - No Repair Needed
 - Other - See Comments
- Repair Status Line**
- In Use - Fire Management
 - Needs Assessment
 - Repair Needed
 - In Progress
 - Completed - Ready for Inspection
 - Completed - Inspected
 - No Repair Needed
 - Other - See Comments
 - Uncountained
 - Dip Site
 - Hellspot
- Other Symbols**
- Hellbase
 - Sling Site
 - Unimproved Landing Area
 - Incident Command Post
 - Drop Point
 - Staging Area
 - Lookout
 - Value at Risk
 - Other
 - Gate
 - Bridge
 - Water Development or Draft Site
 - Dip Site
 - Structure Wrap
 - Road Repair
- Other Symbols**
- Retardant in Avoidance Area
 - Resource Location
 - Repair Point
 - Landing or Log Deck
 - Hazard Tree
 - Fence - Cut/Damaged
 - Dozer Push
 - Culvert
 - Clean Up Area
 - Hazard
 - Water Source
 - Completed Dozer Line
 - Completed Hand Line
- Other Symbols**
- Completed Road as Line
 - Access or Improved Road
 - Highlighted Feature
 - Other
 - Repair Line
 - Road Repair
 - Retardant Drop
 - Future Strategic Fireline
 - Wildfire Daily Fire Perimeter
 - Wild & Scenic Rivers
 - Wilderness



0 0.5 1 2 Miles
 Datum: North American 1983
 GISS Updated: 10/26/2022 1332

Suppression Repair Ammon

10/27/2022



Repair Summary		Lines (Miles)	Points (Count)
In Use - Fire Management		0.0	3
Needs Assessment		1.0	121
Repair Needed		1.3	56
In Progress		2.8	1
Completed - Ready for Inspection		1.0	0
Completed - Inspected		224.1	142
No Repair Needed		50.6	266
Other - See Comments		7.3	16
% Completed		78.1%	23.5%
% Completed or No Repair Needed		95.7%	67.4%

SRF Lightning Complex

CA-SRF-000620
10/27/2022

41,598 acres
IR updated 10/1/2022

- Repair Status Point**
- Needs Assessment
 - Repair Needed
 - Completed - Inspected
 - No Repair Needed
 - Other - See Comments
- Repair Status Line**
- In Use - Fire Management
 - Needs Assessment
 - Repair Needed
 - In Progress
 - Completed - Ready for Inspection
 - Completed - Inspected
 - No Repair Needed
 - Other - See Comments
- Drop Point**
- Staging Area
 - Lookout
 - Value at Risk
 - Other
 - Water Development or Draft Site
 - Structure Wrap
 - Stream Crossing
 - Road Repair
 - Repair Point
 - Landing or Log Deck
 - Hazard Tree
 - Dozer Push
 - Culvert

- Clean Up Area
- Hazard
- Water Source
- Completed Dozer Line
- Completed Fuel Break
- Completed Hand Line
- Completed Road as Line
- Access or Improved Road
- Other
- Road Repair
- Future Strategic Fireline
- Wildfire Daily Fire Perimeter
- Wild & Scenic Rivers

