

INCIDENT ACTION PLAN SRF LIGHTNING

COMPLEX

CA-SRF-000620

P5PY38 (0510)



OPERATIONAL PERIOD

9/8/2022 0700

to

9/8/2022 1900





INCIDENT OBJECTIVES (ICS 202)

1. Incident Name: SRF LIGHTNING COMPLEX	2. Operational Period:	Date From: 9/8/2022 Time From: 0700	Date To: 9/8/2022 Time To: 1900
---	-------------------------------	--	------------------------------------

Strategic Direction
 The SRF Lightning Complex will be managed with a full suppression strategy. Firefighting resources will follow risk-based decision making. Implement tactics that offer the highest probability of success to achieve the strategy of suppressing the fire and protecting values.

Values at risk include the safety of the public and firefighters; privately and Tribally held timberlands; the communities and outlying areas near Willow Creek, Hawkins Bar, Burnt Ranch, and Salyer; water and electrical infrastructure; and natural and cultural resources.

Leaders' Intent
 Everyone will work as a team to provide the highest level of service while assigned to the incident. All assigned resources will ensure transparent, timely and accurate communication at all levels of the incident while working to strengthen relationships with each other and with cooperators. All incident personnel should be prepared to take appropriate actions regarding:

- Safety - including the identification and mitigation of hazards to yourself and others.
- Timely and thoughtful risk-based decision making.
- Manage fatigue by taking breaks and maintaining work/rest cycles.
- Professional behavior, conduct, and timely/effective communication.
- Manage health and wellbeing by following common sense, practicing good hygiene, and communicable disease mitigations.

Management Objectives

- Provide for firefighter and public safety through hazard recognition and application of the risk management process.
- Coordinate public information to provide timely and continuous situation updates to affected agency partners, cooperators, and public.
- Coordinate suppression and repair activities with READs to minimize impacts on natural and cultural resources.
- Effectively manage and track costs for all incidents identified within the SRF Lightning Complex.

Control Objectives
 To limit fire growth and to prevent the fire from spreading to private property, surrounding communities and values at risk, keep the SRF Lightning Complex fires:

Branch I

- North of Salyer Heights and Trinity River
- South of Lone Pine Ridge
- East of Campbell Ridge Road, Seeley McIntosh Road, and Peach Tree Lane
- West of Forest Road 07N26

Branch X

- Keep the fire within current control lines.

5. Site Safety Plan Required? No

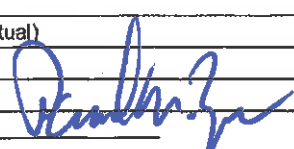
Approved Site Safety Plan(s) Located at:

6. Incident Action Plan

<input checked="" type="checkbox"/> ICS 203	<input checked="" type="checkbox"/> ICS 215A	<input checked="" type="checkbox"/> Line Order Form	<input checked="" type="checkbox"/> Suppression Repair Cheat Sheet
<input checked="" type="checkbox"/> ICS 204	<input checked="" type="checkbox"/> ICS 220	<input checked="" type="checkbox"/> Training Message	<input checked="" type="checkbox"/> COVID Message
<input checked="" type="checkbox"/> ICS 205	<input checked="" type="checkbox"/> Weather Forecast	<input checked="" type="checkbox"/> Base Camp Map	<input checked="" type="checkbox"/> HR Message
<input checked="" type="checkbox"/> ICS 206	<input checked="" type="checkbox"/> Fire Behavior	<input checked="" type="checkbox"/> Demob List	<input type="checkbox"/>
<input checked="" type="checkbox"/> ICS 208	<input checked="" type="checkbox"/> Fire Behavior Advisory	<input checked="" type="checkbox"/> Finance Message	<input checked="" type="checkbox"/> ICS 214

7. Prepared By: Paul Zerr	Position/Title: PSC2	Signature:
8. Approved by Incident Commander:	Jimmy Harris	Signature:

ORGANIZATION ASSIGNMENT LIST (ICS 203)

1. Incident Name: SRF LIGHTNING COMPLEX		2. Operational Period: Date From: 9/8/2022 Time From: 0700		Date To: 9/8/2022 Time To: 1900	
3. Incident Commander(s) and Command Staff:			7. Operation Section:		
IC/UC's	Jimmy Harris/Stephen Fillmore (T)	Operations	Scott Grasmick/Travis Ederer (T)		
Deputy	John Lucas/Tom Clemo	Planning Ops	Tom Himmelrich (T)/Nick Cleary (T)/Shaun Craig		
Safety Officer	Rick Bertram/Tom Zeuner	Night Ops			
Information Officer	Stokesberry/Engberg/Cossel (T)				
Liaison Officer	Neumann/Cablayan/Knuckles (T)	Branch	I	Joe Tesco/Erick D'Amico (T)	
4. Agency/Organization Representatives:		Division/Group	A/R	Rick Dykhouse (9/9)	
Agency/Organization	Name	Division/Group	D/G	Jere Classay/Ryan Edmonson (T) (9/9)	
SRF AA	Nolan Colegrove/Jen Dyer (T)	Division/Group	J	Mike Hildebrand (9/8)/Jerry Olson (T) (9/20)	
Tribal/BIAAA	Nathan Gogna	Division/Group	N	Chris Linane	
Hoopla Tribe	Greg Moon	Division/Group	CONTINGENCY	Orlando Genao (9/12)	
Yurok Tribe	Rod Mendes	Division/Group			
TCSO	Tim Saxon	Division/Group			
HCSO	William Honsal	Branch	X	Larry Wright/Derek Stedley (T)	
Lead ARCH	Brandy Clark	Division/Group	U	John Chester (9/8)/Ryan Aeby (9/21)	
Lead BAER	Emily Fudge	Division/Group	W	Elijah Coleman	
Lead READ	AJ Donnell	Division/Group	SUPP. REPAIR	Joel Berg (9/17)/Brendon Barwell (T) (9/17)	
COVID Advisor	Gary Eickhorst	Branch			
CCC Rep	Ben Herbert/Andrea Garcia (T)	Division/Group			
		Division/Group			
		Division/Group			
5. Planning Section:		Division/Group			
Chief	Paul Zerr	Division/Group			
Deputy	Jeff Jones/John Germanetti	Division/Group			
Resource Unit	Noah Tunney/Araceli Nahas (T)	Branch			
	Dylan Dabasinskas/Michelle Allen (T)	Division/Group			
Situation Unit	Robert Verdie	Division/Group			
Status Check-In	Matthew Begines/David Charron (T)	Division/Group			
Demobilization Unit	Jeremy Owens/Anthony Rivas (T)	Division/Group			
GISS	Erin Opliger/Sierra Brown	Division/Group			
Documentation Unit	Joey Kosiorowski (virtual)	Division/Group			
Fire Behavior Analyst	Nic Elmquist	Division/Group			
Incident Meteorologist	Tom Lonka	Division/Group			
Air Resource Advisor	Kathleen Navarro	Division/Group			
Training Specialist	Jesse Roach	Division/Group			
HR Specialist	Sterling Flores	Air Operations Branch		Director:	John Crotty
		Air Support Group Supervisor		Tracy Dott	
6. Logistics Section		Air Tactical Group Supervisor			
Chief	Beeman, Crakes, Barham (T)	Helibase Manager			
Supply Unit	Patricia Dutrey				
Facilities Unit	Janine Hammond/Cassey Buckley (T)	8. Finance/Administration Section:			
Ground Support Unit	Larry Amerjan/Evan Hamaker (T)	Chief	Lisa Dow		
Communications Unit	Glendon Chan/Chris Oliver (T)	Deputy			
Medical Unit	Josh Fudge/Leif Juliusen	Time Unit	Paula Stephens		
IT Support Specialist	Cohn (virtual)/Ashby/Martin (T)	Equipment Unit	Amanda Folendorf (virtual)		
FF Health Advocate	Jim Emerson	Comp/Claims Unit	Christina Weaver (T)		
Security Manager	Nate Welker, Richard Schue	Cost Unit	Sandra Tarvin (virtual)		
Prepared By: Name:	Paul Zerr	Position/Title:	PSC2	Signature: 	
ICS 203		Date/Time:	9/7/2022 2100 hours		



2022 SRF Lightning Complex Fire Weather Forecast

FORECAST NO: 31
PREDICTION FOR: 0700 Thu - 0700 Fri
SHIFT DATE: Sept 8th – Sept 9th, 2022

NAME OF FIRE: 2022 SRF Lightning Complex
SHIFT UNIT: CA-SRF
SIGNED: Tom Lonka - IMET (910) 920-7865

FORECAST ISSUED: 1800 Wednesday, September 7th, 2022

...HEAT ADVISORY FOR TODAY...

WEATHER DISCUSSION: The intense heat will continue today and through the rest of the week. Light easterly to southeasterly flow in the morning will become northwesterly after 1400, gusting to 10-15 mph on the higher slopes and ridges. RH values will drop into the upper teens to mid 20's. Poor RH recoveries expected overnight with readings 20-40% in the higher terrain, and 40-70% in the lower slopes below 3,500 ft.

WEATHER FORECAST FOR TODAY (THURSDAY):

WEATHER: Sunny, but areas of smoke early, partially mixing out after 1500.

MAX TEMPERATURES: 86-92 degrees upper slopes and ridges. **24 HR Trend:** Up 2-4 degrees.
94-99 degrees lower slopes and drainages. **24 HR Trend:** Up 2-4 degrees.

MINIMUM HUMIDITY: 18 - 24% upper slopes and ridges. **24 HR Trend** Down 2-4%.
17 - 23% lower slopes and drainages. **24 HR Trend** Down 2-4%.

20-FOOT WIND:

SLOPE/VALLEY - Light east/downslope breeze, becoming NW or upslope 4-6 mph, gusts to 10 mph after 1500 PDT.

RIDGETOP - Light southeast breeze, becoming NW 5-8 mph with gusts 10 to 14 mph after 1500 PDT.

INVERSIONS/STABILITY: Moderate inversion around 1500 feet partially mixing out around 1400 hours.

SMOKE TRANSPORT WIND: Northwest around 5 mph.

WEATHER FORECAST FOR TONIGHT (THURSDAY NIGHT):

WEATHER: Haze through sunset then smoke settling across the fire overnight and ICP toward morning.

MINIMUM TEMPERATURES: 70-75 thermal belts above 3500 ft. 63-68 lower slopes. **24 HR Trend:** Up 2-4 degrees.

MAXIMUM HUMIDITY: 20-40% mid and upper slopes. 40-70% lower slopes. **24 HR Trend:** Down 4-8%.

20-FOOT WIND:

SLOPE/VALLEY – NW to N or upslope winds 4-6 mph, diminishing to NE to E or downslope 2-4 mph after 2200.

RIDGETOP – NW to N 4-6 mph with gusts 10 to 15 mph through 2100, diminishing and becoming southeast 3-6 mph late.


INVERSIONS/STABILITY: Smoke settling over the fire and ICP with a moderate nighttime inversion around 2000 ft.

EXTENDED FORECAST FRIDAY - SUNDAY: The heatwave continues through the week with low RH values both during the day and at night with poor recoveries expected. Late Saturday through Sunday morning will bring an increase in clouds and maybe some light rain or sprinkles, but little if any measurable rain is expected. Cooler temperatures and higher humidities make a return for late in the weekend to early next week as a trough of low pressure replaces the ridge of high pressure that is in place.

PORTABLE WEATHER STATIONS:

Division N/R near Denny Road: Frequency 163.350 DTMF Tone 0059
Division W near Friday Ridge: Frequency 163.350 DTMF Tone 0060
Division N/R/U east of Elbow Dip: Frequency 163.350 DTMF Tone 0002
Division G near Branch I Contingency Line: Frequency 163.350 DTMF Tone 0003

FIRE BEHAVIOR FORECAST

FORECAST NUMBER: 33	TYPE OF FIRE: Wildfire
FIRE NAME: SRF Lightning CA-SRF-00620	OPERATIONAL PERIOD: 09/08/2022 (0700-0700)
DATE ISSUED: 09/07/2022	TIME ISSUED: 1800
UNIT: Six Rivers National Forest	SIGNED:  Typed/printed: Nic Elmquist (FBAN)

INPUTS

WEATHER SUMMARY: ** See Fire Weather Forecast**

Weather: Another hot and dry day is expected with less
Max Temp: 86^o-92^o (upper elevations), 94^o-99^o (lower slopes) **Min Temp:** 63^o-75^o
Min RH: 18%-24% (upper elevations), 17%-23% (lower slopes)
20 foot winds: Light southeast breeze, becoming northwest 5-8 mph with gust to 14 after 1500

FUELS SUMMARY:

Fuels and Fire Behavior Advisory Issued for Geographic Area

The Campbell and Ammon fires resulted from a lightning event that occurred in the early morning hours of August 5th. The area has seen 50-75% of normal precipitation in the current rain year and the relatively mild spring and early summer conditions had the fuel and fire danger indices near historical averages during the initial stages of the fire. Current conditions are reflective of an additional month of drying with fuels and fire danger indices at or above the 97th percentile. The primary carrier of fire at lower elevations is timber litter with a substantial hardwood dead and down component resulting from an ice/snow event this past winter.

OUTPUTS

FIRE BEHAVIOR

GENERAL:

Yesterday's clouds provided relief from the previous day's very hot temperatures. Overnight recovery improved so the window for active burning will be much smaller. Less internal burning and clear skies will improve visibility down into the drainages. There is no longer an aerial supervision platform, but several helicopters available for bucket work if needed.

Fire Danger Indices – 2022 IRPG Page 39

Energy Release Component (Brush Mtn): 97th

September Average ERC Percentile: 50th

Peak Burn Period (1600-2000) - Probability of Ignition (PIG): 80% (shaded), 90% (unshaded), 30% (overnight)

Spotting Distance of Torching Tree with 10 mph ridgetop winds: 0.20 miles

SPECIFIC:

Branch I: The hard work is paying off as fire behavior continues to diminish within the Campbell fire. The remaining activity is limited to backing fire within the interior unburned islands and isolated smoldering of dead ground fuel. Continue tactical patrols during the hottest part of the day that can look for roll-out and assess any new signs of heat near the lines.

Branch X: Keep posting lookouts who can assess smokes. When working with heavy equipment, spin weather and evaluate Probability of Ignition. You may need to shut down operations during the hottest and driest parts of the day.

AIR OPERATIONS:

Sunrise 0650, Sunset 1937 (Daylength: losing 2 min, 36 sec)

Smoke will impact the lower elevations early in the day with clearing beginning by early afternoon.

SAFETY:

Continue to match your operational tempo with the tempo of the fire. Slow is smooth and smooth is fast.

Fuels and Fire Behavior Advisory

Northern California

September 2nd, 2022



Subject: Potential for extreme fire behavior due to critically elevated fire danger indices, low live and dead fuel moistures, and very hot and dry conditions across much of northern California.

Discussion: An extended period of hot, dry weather with embedded periods of enhanced winds will impact Northern California. The elevated fire weather concerns with fuels reaching their yearly minimum moisture values will create conditions conducive to long range spotting, rapid fire growth, and high resistance to control.

Difference from normal conditions: The current values for Energy Release Component (ERC) are at or above the 90th percentile for the majority of Northern California, with live fuel moistures dropping to critical levels as herbaceous and woody fuels cure. These conditions will be exacerbated by a predicted heat wave, resulting in anomalous daytime highs with little relief in temperature or humidity recovery overnight. Some PSA's, may reach daily record ERC values, with all covered PSA's predicted to reach or exceed the 97th percentile for an extended period. The combination of extreme ERC's with high temperatures and poor overnight humidity recovery is highly correlated with extreme fire behavior in Northern California.

Concerns to Firefighters and the Public:

- The advisory coincides with the Labor Day holiday weekend that is likely to result in increased outdoor recreation and visitor use to public lands across Northern California. The increase in public use carries an increased risk of fire starts as well as potential for evacuations of visitors/ recreational users in the event of a fire starting.
- Energy Release Component (ERC) in areas covered by this advisory are at or above the 90th percentile and are expected to approach or exceed the 97th percentile. **Anticipate increased spread rates, long range spotting, and active nighttime burning.**
- The combination of persistent drought, a building heat wave, and a very dry atmosphere will continue to decrease already low fuel moisture values:
 - 1000-hour fuel moistures are below average and approaching the 90th percentile,
 - Live woody fuel moisture in brush is near or slightly below average, making them readily available and will likely reach critical levels because of the forecasted hot, dry weather.
 - The above average herbaceous fuel load at low and mid elevations (below 5,000 ft.) is fully cured, with high elevation herbaceous fuels rapidly curing during the hot, dry forecast.
 - Higher than average surface fuel loading is present in areas that experienced winter snow and ice storms in the Coast Range and northern Sierra Nevada.

Expect fires to ignite easier and spread faster. Do not expect fires to exhibit reduced fire behavior when entering areas of live fuels; anticipate increased spread rates and spotting.

- Periods of enhanced winds are expected during the hot and dry period. Given the current and anticipated fuels conditions, increases in winds will make direct attack of any new starts difficult and may hamper use of aerial resources.
- Review the current North Ops Outlooks and national fuels and fire behavior advisories.

Mitigation Measures:

- Suppression actions need to be based on good anchor points, escape routes, and safety zones. **Remember LCES. Experienced lookouts are essential under these conditions.**
- Base all actions on current and expected behavior of the fire. **Augment initial attack resources as incident activity dictates**
- Fire managers should be aware of high use recreation and visitor sites in their area. **The holiday weekend will bring increased visitor use, increasing risk of starts during critical fire weather.**

Area of Concern: Northern California except for the following Predictive Service Areas: North Coast, Bay Marine, and west of Highway 101 in Mid-Coast to Mendocino.



ASSIGNMENT LIST (ICS 204 WF)

CONTROLLED UNCLASSIFIED
INFORMATION/BASIC

1. Incident Name:		2. Operational Period:				3. Branch		Division	
SRF LIGHTNING COMPLEX		Date From: 09/08/22	Date To: 09/08/22			I		A/R	
		Time From: 0700	Time To: 1900						
4. Operations Personnel:						Page 1 of 2			
Operations Section Chief: Scott Grasmick/Travis Ederer (T)				Night Ops:					
Branch Director: Joe Tieso/Erick D'Amico (T)				Branch Safety: Brent Kaiser					
Division/Group Supervisor: Rick Dykhouse (9/9)				Air Attack:					
5. Resources Assigned:		** Resources Below in Bold are 12 Hour **							
Resource Identifier	ALS	LWD	Leader	Personnel	Request #	Hours	Reporting Location		
CR2I ELK MOUNTAIN		9/10	DARON JACKSON	20	C-120	0700-1900	BURNT RANCH		
CRW2 PONDEROSA TIMBERLAND 1		9/12	CARLOS BENCOMO	20	C-128	0700-1900	BURNT RANCH		
CRW2 PONDEROSA TIMBERLAND 2		9/12	SERGIO BENCOMO	20	C-129	0700-1900	BURNT RANCH		
ENG3 YUROK 9434		9/19	FERMIN SANCHEZ	5	E-549	0700-1900	BURNT RANCH		
ENG5 GLOBAL WILDFIRE 5		9/14	JOHN DICKERSON	3	E-214	0700-1900	BURNT RANCH		
ENG5 ALASKA		9/18	TASHA KEY	3	E-227	0700-1900	BURNT RANCH		
ENG6 PACIFIC OASIS		9/15	CASEY BJORKLUND	3	E-493	0700-1900	BURNT RANCH		
EXC2 LONESTAR		9/8	KEN JONES	2	E-445	0700-1900	BURNT RANCH		
WTS1 NORTHSTATE MCGRIFFIN		9/8	BRETT MCGRIFFIN	1	E-481	0700-1900	BURNT RANCH		
WTS2 DARRAH LOGGING 4		9/15	TREYCE ASHCRAFT	1	E-477	0700-1900	BURNT RANCH		
FMOD N. ZONE FALLERS 528		9/13	TOM NEALY	2	O-528	0700-1900	BURNT RANCH		
FMOD N. ZONE FALLERS		9/15	CARL HALL	2	O-92	0700-1900	BURNT RANCH		
TFLD MADORE		9/15	GABE PEASE-MADORE	1	O-267	0700-1900	BURNT RANCH		
TFLD (T) EDENS		9/9	ANDREW EDENS	1	O-590	0700-1900	BURNT RANCH		
EMPF SNOW	X	9/9	JACOB SNOW	1	O-495	0700-1900	BURNT RANCH		
EMTF FITZSIMMONS		9/20	WILLIAM FITZSIMMONS	1	O-806	0700-1900	BURNT RANCH		
SOFR NELSON		9/9	BRIAN NELSON	1	O-622	0700-1900	BURNT RANCH		
6. Work Assignments:									
<ul style="list-style-type: none"> - Proactively patrol for potential issues; mitigate any threats to keep the fire within the current perimeter. - Identify and backhaul remaining equipment. - Work with Resource Advisors to repair hand and mechanical control lines to the identified standard. 									
7. Special Instructions:									
<p>- Only use designated fire hydrants at Enchanted Springs Rd. cross of Hwy. 299 and the Country Club Rd. Post Office.</p> <p>***Mtn. Medic M5 - DP113, Wilderness M1 - DP240, Rough Country AMB2 - DP168, Rough Country AMB3 and REMS 1 - DP184, REMS 4 - DP155***</p> <p>Branch I REAF: Masten, Colegrove, Sylvia, McDarment, Marshall, Hoyle</p> <p>Branch I ARCH: Shaw</p>									
8. Communications									
Name	Ch	Function	Rx Freq	Rx Tone	Tx Freq	Tx Tone	Mode	Notes	
NIFC C4	1	COMMAND	170.0000	(T4) 136.5	168.6750	(T4) 136.5	A	BRUSH MTN	
NIFC T1	6	TACTICAL	168.0500	(T4) 136.5	168.0500	(T4) 136.5	A		
A/G TAC	14	A/G TAC	164.8625	0.0	164.8625	0.0	A		
CALCORD	15	MEDICAL	156.0750	(T6) 156.7	156.0750	(T6) 156.7	A		
AIRGUARD	16	AIRGUARD	168.6250	0.0	168.6250	(T1) 110.9	A	EMERGENCY ONLY	
9. Prepared by: Name:			Dabasinkas/Nahas (T)			RESL			
						Signature: /S/Dabasinkas/Nahas (T)			
ICS 204		Date/Time: 9/7/2022			2200		Personnel Count: 87		

NIMS IAP

CONTROLLED UNCLASSIFIED INFORMATION/BASIC

ASSIGNMENT LIST (ICS 204 WF)

CONTROLLED UNCLASSIFIED
INFORMATION/BASIC

1. Incident Name: SRF LIGHTNING COMPLEX		2. Operational Period: Date From: 09/08/22 Date To: 09/08/22 Time From: 0700 Time To: 1900			3. Branch I		Division D/G	
4. Operations Personnel: Operations Section Chief: Scott Grasmick/Travis Ederer (T) Branch Director: Joe Tieso/Erick D'Amico (T) Division/Group Supervisor: Jere Classay/Ryan Edmonson (T) (9/9)				Night Ops: Branch Safety: Brent Kaiser Air Attack:		Page 1 of 2		
5. Resources Assigned:		** Resources Below in Bold are 12 Hour **						
Resource Identifier	ALS	LWD	Leader	Personnel	Request #	Hours	Reporting Location	
CRW1 SRF SMITH RIVER IHC		9/8	DOUGLAS DENLINGER	21	C-117	0700-1900	ICP	
CRW2 NORTH PACIFIC 5		9/13	JEFFREY ANDERSON	20	C-132	0700-1900	ICP	
CRW2 DUST BUSTERS 25		9/13	MICHAEL ZITO	20	C-131	0700-1900	ICP	
CRW2 MP FORESTRY 144		9/20	ENRIQUE MORENO	20	C-144	0700-1900	ICP	
ENG3 BLM 7373		9/19	MICHEAL MADINA	5	E-566	0700-1900	ICP	
ENG3 J3 CONTRACTING 2		9/8	AJ KLOTZ	3	E-505	0700-1900	ICP	
ENG3 OUTBACK FIREFIGHTING		9/18	JOHN BULLEN	3	E-508	0700-1900	ICP	
ENG6 SRF 652		9/8	DANIEL REESE	4	E-489	0700-1900	ICP	
ENG6 LONE ELK FIRE		9/8	RON CLARK	3	E-490	0700-1900	ICP	
ENG6 PENNSYLVANIA		9/21	TODD BREININGER	4	E-344	0700-1900	ICP	
DZR2 COCKRELL		9/11	DUSTIN JONES	2	E-85	0700-1900	ICP	
SKG2 LET-ER-BUCK		9/15	WESTLEE WARD	1	E-462	0700-1900	ICP	
EXC2 WALBERG		9/15	DAVIS GOODIN	2	E-100	0700-1900	ICP	
WTT1 WILLOW CREEK 9257		9/11	CORY HICKS	2	E-42	0700-1900	ICP	
WTS2 HORN		9/15	KEVIN HORN	1	E-496	0700-1900	ICP	
WTS2 KIT CONTRACTING		9/15	CARTER BOICE	1	E-479	0700-1900	ICP	
CHP2 WELL EQUIPT		9/15	TERRI GONZALEZ	3	E-102	0700-1900	ICP	
FMOD N. ZONE FALLERS 484		9/12	HOMER BENNETT	2	O-484	0700-1900	ICP	
FMOD QUINNS		9/8	LEAF QUINN	2	O-584	0700-1900	ICP	
FMOD LONE PINE CUTTING		9/8	RANDALL BELL	2	O-586	0700-1900	ICP	
FMOD PACIFIC RIDGELINE 2		9/16	AARON ADAMS	2	O-583	0700-1900	ICP	
6. Work Assignments:								
<ul style="list-style-type: none"> - Proactively patrol for potential issues; mitigate any threats to keep the fire within the current perimeter. - Identify and backhaul remaining equipment. - Work with Resource Advisors to repair hand and mechanical control lines to the identified standard. 								
7. Special Instructions:								
<ul style="list-style-type: none"> - Only use designated fire hydrants at Enchanted Springs Rd. cross of Hwy. 299 and the Country Club Rd. Post Office. <p>***Mtn. Medic M5 - DP113, Wilderness M1 - DP240, Rough Country AMB2 - DP168, Rough Country AMB3 and REMS 1 - DP184, REMS 4 - DP155***</p> <p>Branch I REAF: Masten, Colegrove, Sylvia, McDarment, Marshall, Hoyle</p> <p>Branch I ARCH: Shaw</p>								
8. Communications								
Name	Ch	Function	Rx Freq	Rx Tone	Tx Freq	Tx Tone	Mode	Notes
NIFC C4	1	COMMAND	170.0000	(T4) 136.5	168.6750	(T4) 136.5	A	BRUSH MTN
VFIRE 25	7	TACTICAL	154.2875	(T6) 156.7	154.2875	(T6) 156.7	A	
A/G TAC	14	A/G TAC	164.8625	0.0	164.8625	0.0	A	
CALCORD	15	MEDICAL	156.0750	(T6) 156.7	156.0750	(T6) 156.7	A	
AIRGUARD	16	AIRGUARD	168.6250	0.0	168.6250	(T1) 110.9	A	EMERGENCY ONLY
9. Prepared by: Name:			Dabasinskas/Nahas (T)		RESL			
					Signature: /S/Dabasinskas/Nahas (T)			
ICS 204		Date/Time: 9/7/2022			2200		Personnel Count: 123	

NIMS IAP

CONTROLLED UNCLASSIFIED INFORMATION/BASIC

ASSIGNMENT LIST (ICS 204 WF)

CONTROLLED UNCLASSIFIED
INFORMATION//BASIC

1. Incident Name: SRF LIGHTNING COMPLEX		2. Operational Period: Date From: 09/08/22 Date To: 09/08/22 Time From: 0700 Time To: 1900				3. Branch I		Division J	
4. Operations Personnel: Operations Section Chief: Scott Grasmick/Travis Ederer (T) Branch Director: Joe Tieso/Erick D'Amico (T) Division/Group Supervisor: Mike Hildebrand (9/8)/Jerry Olson (T) (9/20)						Night Ops:		Page 1 of 2	
						Branch Safety: Brent Kaiser		Juliet	
						Air Attack:			
5. Resources Assigned:									
** Resources Below in Bold are 12 Hour **									
Resource Identifier	ALS	LWD	Leader	Personnel	Request #	Hours	Reporting Location		
CR2I MILLER TIMBER		9/15	PATRICK GLENN	20	C-138	0700-1900	BURNT RANCH		
CR2I FIRESTORM WILDLAND		9/14	LOWE GRAHAM	20	C-130	0700-1900	BURNT RANCH		
ENG3 SQF 342		9/19	RYAN SAMPSON	5	E-570	0700-1900	BURNT RANCH		
ENG3 IAR		9/13	ADAMS DENNIS	3	E-529	0700-1900	BURNT RANCH		
ENG3 BDF 13		9/19	GARY AVILA	5	E-556	0700-1900	BURNT RANCH		
ENG4 ARROW FIRE		9/11	STEPHEN MORROW	3	E-169	0700-1900	BURNT RANCH		
ENG6 NM-RPD 1642		9/14	JASON JONES	3	E-526	0700-1900	BURNT RANCH		
SKG2 DC FIRE		9/8	DAN CHANCLER	2	E-461	0700-1900	BURNT RANCH		
EXC2 MURDOCK		9/19	MIKE MURDOCK	2	E-204	0700-1900	BURNT RANCH		
EXC3 DEANS 534		9/17	GERY HAYES	1	E-534	0700-1900	BURNT RANCH		
EXC3 DEANS 535		9/17	ETHAN MICHAELS	1	E-535	0700-1900	BURNT RANCH		
CHP1 DAVIS CORP		9/18	JOSE FABELLA	3	E-101	0700-1900	BURNT RANCH		
CHP1 YREKA OUTLANDS		9/17	JOE TENEYCK	3	E-334	0700-1900	BURNT RANCH		
CHP1 TIMBERSMITH 106		9/20	WILLS RILEY	3	E-106	0700-1900	BURNT RANCH		
MBM2 DAVIS CORPORATION		9/19	CHASE NUGENT	2	E-423	0700-1900	BURNT RANCH		
MBM2 LASSEN		9/18	STEVE LAWSON	2	E-546	0700-1900	BURNT RANCH		
WTS2 DARRAH LOGGING 3		9/15	RICK RESH	1	E-476	0700-1900	BURNT RANCH		
WTS2 BASCO CONCRETE		9/8	RENE LARRANGA	1	E-478	0700-1900	BURNT RANCH		
6. Work Assignments:									
<ul style="list-style-type: none"> - Proactively patrol for potential issues; mitigate any threats to keep the fire within the current perimeter. - Identify and locate remaining equipment; backhaul as appropriate. - Work with Resource Advisors to repair hand and mechanical control lines to the identified standard. 									
7. Special Instructions:									
<ul style="list-style-type: none"> - Only use designated fire hydrants at Enchanted Springs Rd. cross of Hwy. 299 and the Country Club Rd. Post Office. <p>***Mtn. Medic M5 - DP113, Wilderness M1 - DP240, Rough Country AMB2 - DP168, Rough Country AMB3 and REMS 1 - DP184, REMS 4 - DP155***</p> <p>Branch I REAF: Masten, Colegrove, Sylvia, McDarment, Marshall, Hoyle</p> <p>Branch I ARCH: Shaw</p> <p>FOBS: Division J & N - Carney, Dirstins (T), Jackson (T), Kilcrease (T)</p>									
8. Communications									
Name	Ch	Function	Rx Freq	Rx Tone	Tx Freq	Tx Tone	Mode	Notes	
NIFC C4	1	COMMAND	170.0000	(T4) 136.5	166.6750	(T4) 136.5	A	BRUSH MTN	
NIFC T6	10	TACTICAL	166.7750	(T4) 136.5	166.7750	(T4) 136.5	A		
A/G TAC	14	A/G TAC	164.8625	0.0	164.8625	0.0	A		
CALCORD	15	MEDICAL	156.0750	(T6) 156.7	156.0750	(T6) 156.7	A		
AIRGUARD	16	AIRGUARD	168.6250	0.0	168.6250	(T1) 110.9	A	EMERGENCY ONLY	
9. Prepared by: Name: Dabasinskas/Nahas (T) RESL									
Signature: /S/Dabasinskas/Nahas (T)									
ICS 204		Date/Time: 9/7/2022			2200		Personnel Count: 80		

NIMS IAP

CONTROLLED UNCLASSIFIED INFORMATION//BASIC

ASSIGNMENT LIST (ICS 204 WF)

CONTROLLED UNCLASSIFIED
INFORMATION/BASIC

1. Incident Name: SRF LIGHTNING COMPLEX	2. Operational Period: Date From: 09/08/22 Date To: 09/08/22 Time From: 0700 Time To: 1900	3. Branch Division I N Page 1 of 2 November
--	---	---

4. Operations Personnel: Operations Section Chief: Scott Grasmick/Travis Ederer (T) Branch Director: Joe Tieso/Erick D'Amico (T) Division/Group Supervisor: Chris Linane		Night Ops: Branch Safety: Brent Kaiser Air Attack:
---	--	---

5. Resources Assigned:		** Resources Below in Bold are 12 Hour **					
Resource Identifier	ALS	LWD	Leader	Personnel	Request #	Hours	Reporting Location
CRW1 MAD RIVER IHC		9/10	ERIC ESQUIVEL	23	C-118	0700-1900	BURNT RANCH
CRW1 LASSEN IHC		9/8	ALLEN SCHULTZE	20	C-116	0700-1900	BURNT RANCH
CRW1 FEATHER RIVER IHC		9/8	RAYMOND TORRES	25	C-119	0700-1900	BURNT RANCH
CR2I AUGUSTA		9/18	DEREK KRAMER	20	C-141	0700-1900	BURNT RANCH
CRW2 JO INTERNATIONAL		9/11	PATRICK REILLY	20	C-127	0700-1900	BURNT RANCH
EST3 ANF 1606C		9/19	ADAM NORTON	27	E-560	0700-1900	BURNT RANCH
ENG3 SRF 343		9/8	CHRISTOPHER YARBROUGH	6	E-487	0700-1900	BURNT RANCH
ENG3 SRF 312		9/8	TOMMY DAVIS	4	E-488	0700-1900	BURNT RANCH
ENG4 AUSTIN FIRE		9/8	DAVID AUSTIN	3	E-504	0700-1900	BURNT RANCH
ENG4 CASCADIA FIRE		9/8	JOHN PAUL	3	E-503	0700-1900	BURNT RANCH
ENG6 YELLOWSTONE 691		9/13	SOFIA ECKER	4	E-528	0700-1900	BURNT RANCH
ENG6 FIRE SOLUTIONS		9/14	TARL DE LYRIA	3	E-531	0700-1900	BURNT RANCH
DZR2 LET-ER-BUCK		9/20	TERRY CUMMINGS	2	E-455	0700-1900	BURNT RANCH
DZR3 BERRY 9348		9/18	CIARA PETERSON	2	E-235	0700-1900	BURNT RANCH
WTS1 OILAR		9/15	DANNY OILAR	1	E-480	0700-1900	BURNT RANCH
WTS1 NORTHSTATE BAKER		9/21	DARRYL PRUITT	1	E-483	0700-1900	BURNT RANCH
WTT2 TNF 231		9/8	ALEX RODRIGUEZ	2	E-513	0700-1900	BURNT RANCH
WTS2 SEMPLE		9/8	TIM LONG	1	E-495	0700-1900	BURNT RANCH
WTS2 DARRAH LOGGING 1		9/15	KEITH DARRAH	1	E-472	0700-1900	BURNT RANCH
MBM2 DAVIS		9/18	WILLIAM RUSSELL	2	E-547	0700-1900	BURNT RANCH

- 6. Work Assignments:**
- Mop-up to the extent necessary to keep the fire within the current perimeter.
 - Proactively patrol for potential issues; mitigate any threats to keep the fire within the current perimeter.
 - Identify and locate remaining equipment; backhaul as appropriate.
 - Work with Resource Advisors to repair hand and mechanical control lines to the identified standard.

7. Special Instructions:

- Only use designated fire hydrants at Enchanted Springs Rd. cross of Hwy. 299 and the Country Club Rd. Post Office.

Mtn. Medic M5 - DP113, Wildemess M1 - DP240, Rough Country AMB2 - DP168, Rough Country AMB3 and REMS 1 - DP184, REMS 4 - DP155

Branch I REAF: Masten, Colegrove, Sylvia, McDarment, Marshall, Hoyle
Branch I ARCH: Shaw
FOBS: Division J & N - Carney, Dirstins (T), Jackson (T), Kilcrease (T)

8. Communications

Name	Ch	Function	Rx Freq	Rx Tone	Tx Freq	Tx Tone	Mode	Notes
NIFC C4	1	COMMAND	170.0000	(T4) 136.5	166.6750	(T4) 136.5	A	BRUSH MTN
NIFC T3	8	TACTICAL	168.6000	(T4) 136.5	168.6000	(T4) 136.5	A	
A/G TAC	14	A/G TAC	164.8625	0.0	164.8625	0.0	A	
CALCORD	15	MEDICAL	156.0750	(T6) 156.7	156.0750	(T6) 156.7	A	
AIRGUARD	16	AIRGUARD	168.6250	0.0	168.6250	(T1) 110.9	A	EMERGENCY ONLY

9. Prepared by: Name: Dabasinskas/Nahas (T) RESL
Signature: /S/Dabasinskas/Nahas (T)

ICS 204 Date/Time: 9/7/2022 2200 Personnel Count: 170

ASSIGNMENT LIST (ICS 204 WF)

CONTROLLED UNCLASSIFIED
INFORMATION//BASIC

1. Incident Name: SRF LIGHTNING COMPLEX	2. Operational Period: Date From: 09/08/22 Date To: 09/08/22 Time From: 0700 Time To: 1900	3. Branch Division I N
--	---	---

4. Operations Personnel: Operations Section Chief: Scott Grasmick/Travis Ederer (T) Branch Director: Joe Tieso/Erick D'Amico (T) Division/Group Supervisor: Chris Linane		Night Ops: Branch Safety: Brent Kalser Air Attack:
---	--	---

5. Resources Assigned: ** Resources Below in Bold are 12 Hour **							
Resource Identifier	ALS	LWD	Leader	Personnel	Request #	Hours	Reporting Location
SKD1 LESLIE HEAVY HAUL		9/14	TIM REID	2	E-441	0700-1900	BURNT RANCH
CHP1 CTS VENTURES		9/17	WESTON BURTON	3	E-542	0700-1900	BURNT RANCH
CHP1 KEENAN		9/18	RANDY SCHLUTER	3	E-544	0700-1900	BURNT RANCH
FMOD N. ZONE FALLERS 529		9/13	LEVI BROWN	2	O-529	0700-1900	BURNT RANCH
FMOD N. ZONE FALLERS 483		9/12	BEN WOLF	2	O-483	0700-1900	BURNT RANCH
FMOD TIMBERWOLF		9/24	ROCKY SULLIVAN	2	O-585	0700-1900	BURNT RANCH
FMOD UNDERDOG TIMBER 5		9/15	LARRY CASTRO	2	O-582	0700-1900	BURNT RANCH
TFLD WARWICK		9/9	ADAM WARWICK	1	O-559	0700-1900	BURNT RANCH
TFLD (T) FOWLER		9/8	CODY FOWLER	1	O-561	0700-1900	BURNT RANCH
FELB MCKINNEY		9/9	SETH MCKINNEY	1	O-576	0700-1900	BURNT RANCH
EMPF (T) HAYNIE	X	9/9	BROCK HAYNIE	1	O-676	0700-1900	BURNT RANCH
EMPF DAVID	X	9/12	JOSHUA DAVID	1	O-656	0700-1900	BURNT RANCH
EMTF KLEMEK		9/12	ROBERT KLEMEK	1	O-659	0700-1900	BURNT RANCH
EMTF ROE		9/14	JEFFREY ROE	1	O-679	0700-1900	BURNT RANCH
SOFR HUBBY		9/16	BOBBY HUBBY	1	O-696	0700-1900	BURNT RANCH
SOFR (T) ANDREWS		9/8	DALLAS ANDREWS	1	O-624	0700-1900	BURNT RANCH

6. Work Assignments:

- Mop-up to the extent necessary to keep the fire within the current perimeter.
- Proactively patrol for potential issues; mitigate any threats to keep the fire within the current perimeter.
- Identify and locate remaining equipment; backhaul as appropriate.
- Work with Resource Advisors to repair hand and mechanical control lines to the identified standard.

7. Special Instructions:

- Only use designated fire hydrants at Enchanted Springs Rd. cross of Hwy. 299 and the Country Club Rd. Post Office.
- ***Mtn. Medic M5 - DP113, Wilderness M1 - DP240, Rough Country AMB2 - DP168, Rough Country AMB3 and REMS 1 - DP184, REMS 4 - DP155***
- Branch I REAF: Masten, Colegrove, Sylvia, McDarment, Marshall, Hoyle
- Branch I ARCH: Shaw
- FOBS: Division J & N - Carney, Dirstins (T), Jackson (T), Kilcrease (T)

8. Communications

Name	Ch	Function	Rx Freq	Rx Tone	Tx Freq	Tx Tone	Mode	Notes
NIFC C4	1	COMMAND	170.0000	(T4) 136.5	166.6750	(T4) 136.5	A	BRUSH MTN
NIFC T3	8	TACTICAL	168.6000	(T4) 136.5	168.6000	(T4) 136.5	A	
A/G TAC	14	A/G TAC	164.8625	0.0	164.8625	0.0	A	
CALCORD	15	MEDICAL	156.0750	(T6) 156.7	156.0750	(T6) 156.7	A	
AIRGUARD	16	AIRGUARD	168.6250	0.0	168.6250	(T1) 110.9	A	EMERGENCY ONLY

9. Prepared by: Name: Dabasinskas/Nahas (T) RESL

Signature: */S/Dabasinskas/Nahas (T)*

ICS 204	Date/Time: 9/7/2022	2200	Personnel Count: 25
---------	---------------------	------	---------------------

ASSIGNMENT LIST (ICS 204 WF)

CONTROLLED UNCLASSIFIED
INFORMATION/BASIC

1. Incident Name: SRF LIGHTNING COMPLEX		2. Operational Period: Date From: 09/08/22 Date To: 09/08/22 Time From: 0700 Time To: 1900				3. Branch Division I CONTINGENCY		
4. Operations Personnel:						Page 1 of 1		
Operations Section Chief: Scott Grasmick/Travis Ederer (T)				Night Ops:				
Branch Director: Joe Tieso/Erick D'Amico (T)				Branch Safety: Brent Kaiser				
Division/Group Supervisor: Orlando Genao (9/12)				Air Attack:				
5. Resources Assigned:								
** Resources Below in Bold are 12 Hour **								
Resource Identifier	ALS	LWD	Leader	Personnel	Request #	Hours	Reporting Location	
CRW2 FSR-28		9/20	LOUIE MILLIS	22	C-142	0700-1900	ICP	
CRW2 PACIFIC OASIS 15		9/20	WILL DODD	20	C-146	0700-1900	ICP	
ENG6 NATIONAL WILDLAND FIRE		9/8	AARON MANDEL	3	E-510	0700-1900	ICP	
ENG6 THUNDER MOUNTAIN		9/15	JEREMIAH MILLIER	3	E-491	0700-1900	ICP	
WTS2 KISER CONSTRUCTION		9/20	SEAN ROBERTS	1	E-475	0700-1900	ICP	
WTS2 CATTLEACK RANCH		9/14	TAMMY ANDREWS	1	E-518	0700-1900	ICP	
DZR2 MILLER TRUCKING 2		9/19	HAROLD MILLER	2	E-82	0700-1900	ICP	
GRD2 HUMPHREY 316		9/12	RONALD HUMPHREY	1	E-316	0700-1900	ICP	
EXC2 DARRAH LOGGING		9/22	KEITH DARRAH	2	E-414	0700-1900	ICP	
EXC2 BRAD INGRAM CONS		9/20	ROY BRANDON	2	E-443	0700-1900	ICP	
TFLD KLINK		9/10	MICHAEL KLINK	1	O-567	0700-1900	ICP	
TFLD (T) RUDE		9/10	JAY RUDE	1	O-560	0700-1900	ICP	
HEQB WILSON		9/8	JOSHUA WILSON	1	O-572	0700-1900	ICP	
HEQB (T) EDEZEY		9/8	COLTON EDEZEY	1	O-573	0700-1900	ICP	
EMPF HALTERMAN	X	9/13	SCOTT HALTERMAN	1	O-677	0700-1900	ICP	
EMTF PERLSTEIN		9/20	ALEX PERLSTEIN	1	O-805	0700-1900	ICP	
SOFR BARNHART		9/15	JEFFREY BARNHART	1	O-623	0700-1900	ICP	
SOFR (T) DAVIS		9/14	SHAUN DAVIS	1	O-675.58	0700-1900	ICP	
6. Work Assignments:								
<ul style="list-style-type: none"> - Complete any remaining planned contingency line. - Identify and locate remaining equipment; backhaul as appropriate. - Work with Resource Advisors to repair hand and mechanical control lines to the identified standard, while maintaining line viability for strategic use. 								
7. Special Instructions:								
<ul style="list-style-type: none"> - Only use designated fire hydrants at Enchanted Springs Rd. cross of Hwy. 299 and the Country Club Rd. Post Office. <p>***Mtn. Medic M5 - DP113, Wildemess M1 - DP240, Rough Country AMB2 - DP168, Rough Country AMB3 and REMS 1 - DP184, REMS 4 - DP155***</p> <p>Branch I REAF: Masten, Colegrove, Sylvia, McDarment, Marshall, Hoyle</p> <p>Branch I ARCH: Shaw</p>								
8. Communications								
Name	Ch	Function	Rx Freq	Rx Tone	Tx Freq	Tx Tone	Mode	Notes
NIFC C4	1	COMMAND	170.0000	(T4) 136.5	166.6750	(T4) 136.5	A	BRUSH MTN
NIFC T1	6	TACTICAL	168.0500	(T4) 136.5	168.0500	(T4) 136.5	A	
A/G TAC	14	A/G TAC	164.8625	0.0	164.8625	0.0	A	
CALCORD	15	MEDICAL	156.0750	(T6) 156.7	156.0750	(T6) 156.7	A	
AIRGUARD	16	AIRGUARD	168.6250	0.0	168.6250	(T1) 110.9	A	EMERGENCY ONLY
9. Prepared by: Name:								
Dabasinskas/Nahas (T)				RESL				
Signature: /S/Dabasinskas/Nahas (T)								
ICS 204		Date/Time: 9/7/2022 2200				Personnel Count: 65		

NIMS IAP

CONTROLLED UNCLASSIFIED INFORMATION/BASIC

ASSIGNMENT LIST (ICS 204 WF)

CONTROLLED UNCLASSIFIED
INFORMATION/BASIC

1. Incident Name: SRF LIGHTNING COMPLEX	2. Operational Period: Date From: 09/08/22 Date To: 09/08/22 Time From: 0700 Time To: 1900	3. Branch Division X U
--	---	---

4. Operations Personnel: Operations Section Chief: Scott Grasmick/Travis Ederer (T) Branch Director: Larry Wright/Derek Steidley (T) Division/Group Supervisor: John Chester (9/8)/Ryan Aaby (9/21)		Night Ops: Branch Safety: Matthew Martin Air Attack:
--	--	---

** Resources Below in Bold are 12 Hour **							
Resource Identifier	ALS	LWD	Leader	Personnel	Request #	Hours	Reporting Location
CR2I BLUE MOUNTAIN		9/18	GERMAN MARTINEZ	20	C-145	0700-1900	ICP
CRW2 MP FORESTRY 143		9/20	RAUL MORENO	20	C-143	0700-1900	ICP
ENG3 CACNF E343		9/20	PAUL SPENCER	5	E-565	0700-1900	ICP
ENG3 SNF 353 (4X4)		9/20	MICHEAL CARR	5	E-571	0700-1900	ICP
ENG3 J3 CONTRACTING 1		9/9	SHAD LAFONTISE	3	E-268	0700-1900	ICP
WTT2 PIERCE FIRE		9/8	GERRY CRUZ	2	E-514	0700-1900	ICP
WTS2 ACTFAST		9/16	TYLER BARKER	1	E-163	0700-1900	ICP
DZR2 MORRISON		9/21	CHRIS DARR	2	E-83	0700-1900	ICP
EXC2 J W MORRISON		9/19	DEVIN RICHARDS	2	E-444	0700-1900	ICP
CHP2 CUT WRIGHT		9/15	TIM WRIGHT	3	E-103	0700-1900	ICP
TFLD (T) NORRIS		9/8	MICHAEL NORRIS	1	O-562	0700-1900	ICP
TFLD (T) CARMICHAEL		9/8	PAUL CARMICHAEL	1	O-564	0700-1900	ICP
EMPF MOORE	X	9/20	CRAIG MOORE	1	O-807	0700-1900	ICP

6. Work Assignments:

- Proactively patrol for potential issues; mitigate any threats to keep the fire within the current perimeter.
- Identify and locate remaining equipment; backhaul as appropriate.
- Work with Resource Advisors to repair hand and mechanical control lines to the identified standard.

7. Special Instructions:

- Only use designated fire hydrants at Enchanted Springs Rd. cross of Hwy. 299 and the Country Club Rd. Post Office.

Mtn. Medic M5 - DP113, Wilderness M1 - DP240, Rough Country AMB2 - DP168, Rough Country AMB3 and REMS 1 - DP184, REMS 4 - DP155

Branch X REAF: Aubray, Ammon, Rivera, Proflo, Cann, Byers, Sell
Branch X ARCH: Hutchinson

8. Communications								
Name	Ch	Function	Rx Freq	Rx Tone	Tx Freq	Tx Tone	Mode	Notes
NIFC C4	1	COMMAND	170.0000	(T4) 136.5	166.6750	(T4) 136.5	A	BRUSH MTN
NIFC T7	11	TACTICAL	168.2500	(T4) 136.5	168.2500	(T4) 136.5	A	
A/G TAC	14	A/G TAC	164.8625	0.0	164.8625	0.0	A	
CALCORD	15	MEDICAL	156.0750	(T6) 156.7	156.0750	(T6) 156.7	A	
AIRGUARD	16	AIRGUARD	168.6250	0.0	168.6250	(T1) 110.9	A	EMERGENCY ONLY

9. Prepared by: Name:	Dabasinskas/Nahas (T)	RESL
		Signature: <i>/s/Dabasinskas/Nahas (T)</i>
ICS 204	Date/Time: 9/7/2022	Personnel Count: 66

ASSIGNMENT LIST (ICS 204 WF)

CONTROLLED UNCLASSIFIED
INFORMATION/BASIC

1. Incident Name: SRF LIGHTNING COMPLEX		2. Operational Period: Date From: 09/08/22 Date To: 09/08/22 Time From: 0700 Time To: 1900		3. Branch X		Division W			
4. Operations Personnel: Operations Section Chief: Scott Grasmick/Travis Ederer (T) Branch Director: Larry Wright/Derek Steidley (T) Division/Group Supervisor: Elijah Coleman		Night Ops: Branch Safety: Matthew Martin Air Attack:		Page 1 of 1		Whiskey			
** Resources Below in Bold are 12 Hour **									
5. Resources Assigned:		ALS	LWD	Leader	Personnel	Request #	Hours	Reporting Location	
CR21 PATRICK 3A			9/15	GARTH CHAMBERS	20	C-139	0700-1900	ICP	
CRW2 IRON MOUNTAIN			9/12	RAMON CISNEROS	20	C-126	0700-1900	ICP	
ENG3 J3 CONTRACTING MODICA			9/8	SHAWN MODICA	3	E-270	0700-1900	ICP	
ENG3 TMU 342			9/19	PAUL VOSBURG	5	E-550	0700-1900	ICP	
ENG6 BOWERS WFS BRADY			9/8	STEVE BRADY	3	E-409	0700-1900	ICP	
ENG6 BOWERS WFS LLC			9/8	BRETT BOWER	3	E-511	0700-1900	ICP	
ENG6 AZ-BAR 2163			9/13	SHAWN SULLIVAN	5	E-525	0700-1900	ICP	
WTS1 SEMPLE 2			9/8	JOHN SEMPLE	1	E-498	0700-1900	ICP	
WT2 TRI-STATE FIRE			9/9	FRANCESCO MOORE	1	E-515	0700-1900	ICP	
WTS2 OVERWATCH ENTERPRISE			9/15	ANDREW ROMERO	1	E-484	0700-1900	ICP	
EXG2 INGRAM			9/13	DAN LARUE	2	E-442	0700-1900	ICP	
EXC2 JOE & ROCKY			9/22	KEVIN CASTRO	2	E-447	0700-1900	ICP	
EXC2 DUDLEYS' EXCAVATING			9/22	CARLOS ANDRADE	2	E-416	0700-1900	ICP	
HEQB KOELLING			9/9	BLAKE KOELLING	1	O-568	0700-1900	ICP	
HEQB (T) SADLO			9/8	DANIEL SADLO	1	O-570	0700-1900	ICP	
FMOD N. ZONE FALLERS 581			9/8	GEORGE PETERSEN	2	O-581	0700-1900	ICP	
EMPF LAGARCE		X	9/9	BRIAN LAGARCE	1	O-496	0700-1900	ICP	
EMPF MOORE		X	9/20	CRAIG MOORE	1	O-807	0700-1900	ICP	
EMTF CHICOINE			9/8	JOSEPH CHICOINE	1	O-498	0700-1900	ICP	
6. Work Assignments:									
<ul style="list-style-type: none"> - Proactively patrol for potential issues; mitigate any threats to keep the fire within the current perimeter. - Identify and locate remaining equipment; backhaul as appropriate. - Work with Resource Advisors to repair hand and mechanical control lines to the identified standard. 									
7. Special Instructions:									
<p>- Only use designated fire hydrants at Enchanted Springs Rd. cross of Hwy. 299 and the Country Club Rd. Post Office.</p> <p>***Mtn. Medic M5 - DP113, Wilderness M1 - DP240, Rough Country AMB2 - DP168, Rough Country AMB3 and REMS 1 - DP184, REMS 4 - DP155***</p> <p>Branch X REAF: Aubrey, Ammon, Rivera, Profio, Cann, Byers, Seif</p> <p>Branch X ARCH: None</p>									
8. Communications									
Name	Ch	Function	Rx Freq	Rx Tone	Tx Freq	Tx Tone	Mode	Notes	
NIFC C4	1	COMMAND	170.0000	(T4) 136.5	166.6750	(T4) 136.5	A	BRUSH MTN	
NIFC T7	11	TACTICAL	168.2500	(T4) 136.5	168.2500	(T4) 136.5	A		
A/G TAC	14	A/G TAC	164.8625	0.0	164.8625	0.0	A		
CALCORD	15	MEDICAL	156.0750	(T6) 156.7	156.0750	(T6) 156.7	A		
AIRGUARD	16	AIRGUARD	168.6250	0.0	168.6250	(T1) 110.9	A	EMERGENCY ONLY	
9. Prepared by: Name:		Dabasinskas/Nahas (T)			RESL			Signature: /S/Dabasinskas/Nahas (T)	
ICS 204		Date/Time: 9/7/2022		2200		Personnel Count: 75			

NIMS IAP

CONTROLLED UNCLASSIFIED INFORMATION/BASIC

ASSIGNMENT LIST (ICS 204 WF)

CONTROLLED UNCLASSIFIED
INFORMATION/BASIC

1. Incident Name: SRF LIGHTNING COMPLEX		2. Operational Period: Date From: 09/08/22 Date To: 09/08/22 Time From: 0700 Time To: 1900			3. Branch X		Division SUPP. REPAIR	
4. Operations Personnel: Operations Section Chief: Scott Grasmick/Travis Ederer (T) Branch Director: Larry Wright/Derek Steidley (T) Division/Group Supervisor: Joel Berg (9/17)/Brendon Banwell (T) (9/17)		Night Ops:			Branch Safety: Matthew Marlin		Air Attack:	
5. Resources Assigned:		** Resources Below in Bold are 12 Hour **						
Resource Identifier	ALS	LWD	Leader	Personnel	Request #	Hours	Reporting Location	
CR21 PATRICK 3B		9/17	AUSTIN HERGERT	20	C-140	0700-1900	ICP	
SMOD UKONOM		9/17	JOEL BERG	16	O-784	0700-1900	ICP	
WTS2 DARRAH LOGGING 2		9/15	LANE GRANT	1	E-473	0700-1900	ICP	
DZR3 ADAMS		9/14	JARRETT WILLBURN	2	E-499	0700-1900	ICP	
SKG2 LET-ER-BUCK		9/15	WESTLEE WARD	1	E-462	0700-1900	ICP	
SKD1 MCKELLAR TREE		9/21	WYATT LEMMA	2	E-440	0700-1900	ICP	
EXC2 HACKER MACHINES LLC		9/14	MIKE MILLER	2	E-419	0700-1900	ICP	
EXC2 CATTANEO 1		9/15	DON GEORGE	2	E-417	0700-1900	ICP	
EXC2 CATTANEO 2		9/18	ANTHONY CATTANEO	2	E-418	0700-1900	ICP	
EXC2 TOM'S EARTHMOVING		9/19	LUKE WARD	2	E-415	0700-1900	ICP	
EXC2 DUDLEYS' EXCAVATING		9/22	CARLOS ANDRADE	2	E-416	0700-1900	ICP	
MBM2 STONY CREEK		9/18	LUKE ANDREWS	2	E-93	0700-1900	ICP	
MBM2 NORTHSTATE 1		9/18	TURK MONK	1	E-97	0700-1900	ICP	
MBM2 BRITTEN		9/19	JOHN BRITTEN	2	E-449	0700-1900	ICP	
MBM2 T AND S		9/20	SEBASTIAN MAYNARD	2	E-421	0700-1900	ICP	
CHP1 KINCAID		9/19	THOMAS WORTH	3	E-543	0700-1900	ICP	
FEL1 CROOK LOGGING, INC		9/11	RUSSELL CROOK	2	E-438	0700-1900	ICP	
FMOD N. ZONE FALLERS 581		9/8	GEORGE PETERSEN	2	O-581	0700-1900	ICP	
FMOD N. ZONE FALLERS 485		9/12	MIKE LEE	2	O-485	0700-1900	ICP	
FMOD GOD AND COUNTRY		9/15	CHRIS STEWART	2	O-530	0700-1900	ICP	
HEQB (T) GREEN		9/10	BRANDON GREEN	1	O-569	0700-1900	ICP	
TFLD HARRISS		9/10	STEVEN HARRISS	1	O-566	0700-1900	ICP	
6. Work Assignments: - Identify and locate remaining equipment; backhaul as appropriate. - Work with Resource Advisors and Archaeologists to repair hand and mechanical control lines to the identified standard. - Continue hazard tree abatement around DP 220.								
7. Special Instructions: - Only use designated fire hydrants at Enchanted Springs Rd. cross of Hwy. 299 and the Country Club Rd. Post Office. ***Mtn. Medic M5 - DP113, Wilderness M1 - DP240, Rough Country AMB2 - DP168, Rough Country AMB3 and REMS 1 - DP184, REMS 4 - DP155*** Branch X REAF: Aubrey, Ammon, Rivera, Profio, Cann, Byers, Seil Branch X ARCH: None								
8. Communications								
Name	Ch	Function	Rx Freq	Rx Tone	Tx Freq	Tx Tone	Mode	Notes
NIFC C4	1	COMMAND	170.0000	(T4) 136.5	166.6750	(T4) 136.5	A	BRUSH MTN
VFIRE 26	12	TACTICAL	154.3025	(T6) 156.7	154.3025	(T6) 156.7	A	
A/G TAC	14	A/G TAC	164.8625	0.0	164.8625	0.0	A	
CALCORD	15	MEDICAL	156.0750	(T6) 156.7	156.0750	(T6) 156.7	A	
AIRGUARD	16	AIRGUARD	168.6250	0.0	168.6250	(T1) 110.9	A	EMERGENCY ONLY
9. Prepared by: Name: Dabasinskas/Nahas (T)			RESL			Signature: /S/Dabasinskas/Nahas (T)		
ICS 204		Date/Time: 9/7/2022		2200		Personnel Count: 72		

NIMS IAP

CONTROLLED UNCLASSIFIED INFORMATION/BASIC

AIR OPERATIONS SUMMARY ICS-220						Time Prepared 1400	Date Prepared Wednesday, September 7, 2022	Prepared By John Crotty															
Incident Name / Number		Sunrise	Startup	Cutoff	Sunset	Shutdown	Operational Period - Date		Operational Period - Time														
SRF LIGHTNING COMPLEX / CA-SRF-000620		6:47	7:17	19:06	19:36	20:06	Thursday September 8, 2022		0700-0700														
General Remarks, Safety Notes, Hazards, Air Operations Special Equipment, etc. TRACK ALL DIPSITE LOCATIONS / NUMBER OF DIPS / GALLONS TAKEN. TRACK ALL DROP LOCATIONS / NUMBER OF DROPS / GALLONS DROPPED All GPS DATA TO BE COLLECTED IN <u>DEGREES, MINUTES, DECIMAL MINUTES</u> FORMAT. <i>AVOID Aerial Application of Retardant / Foam / Agent within 300' of Waterways, Bodies of Water, etc. If Retardant / Foam / Agent is Dropped Within These Areas Immediately Notify the AOB and Provide the Following Information: Lat / Long, Estimated Number of Gallons and a Map Detailing The Area.</i>						Helibase Information Name Willow Creek Latitude 40 56.977 Longitude 123 38.120 Name Weaverville Latitude 40 44.8319 Longitude 122 55.3510 (use page 2 if needed)		TFR Information Request # A-192 A-193 Radius: Polygon NM Altitude: 9,500 MSL Lat Centerpoint: Long NOTAMS: 2/8786, 2/8669 Frequency 121.0250 http://tfr.faa.gov/tfr2/list.html		Rescue Ship Information <table border="1"> <thead> <tr> <th>Day Hoist</th> <th>Night Hoist</th> </tr> </thead> <tbody> <tr> <td>Name KRN-407</td> <td>KRN-407</td> </tr> <tr> <td>Phone 661-406-5460</td> <td>661-406-5460</td> </tr> <tr> <td>Make/Model UH1H</td> <td>UH1H</td> </tr> <tr> <td>Location WRVL</td> <td>Benton</td> </tr> </tbody> </table> Request Procedure for These Aircraft: Incident Communications See Medical Plan For Additional Info				Day Hoist	Night Hoist	Name KRN-407	KRN-407	Phone 661-406-5460	661-406-5460	Make/Model UH1H	UH1H	Location WRVL	Benton
Day Hoist	Night Hoist																						
Name KRN-407	KRN-407																						
Phone 661-406-5460	661-406-5460																						
Make/Model UH1H	UH1H																						
Location WRVL	Benton																						
Frequencies	TX	Tone	RX	Tone	AM / FM	Position	Name	Phone	Trainee	Phone													
Command	See ICS 205				FM	AOBD	John Crotty	805-440-6186															
AIR / GROUND - TACTICAL	164.8625	0.0000	164.8625	0.0000	FM	ASGS	Tracy Dott	805-722-0170															
TFR VICTOR	121.0250		121.0250		AM	HEBM WC	Lee Stewart	775-220-6364															
AIR / GROUND COMMAND	172.5500		172.5500		FM	HEBM WRVL	Kris Maldonado	530-545-9480															
AIR TACTICS	167.8125		167.8125		FM	ATGS																	
A/G 43 Initial Attack	167.6000		167.6000		FM	HLCO																	
CDF A/G 3 Initial Attack	159.3675	192.8 (16)	159.3675	192.8 (16)	FM	UASM T-3	Jesse Plummer	209-459-0618															
DECK	163.1000		163.1000		FM																		
CALCORD - MEDICAL	156.0750	156.7 (6)	156.0750	156.7 (6)	FM																		
AIRGUARD - Emergency Only	168.6250	110.9 (1)	168.6250		FM																		
HELICOPTERS (Use page 2 if Needed)																							
FAA #	Type	Make/Model	Helibase	Avail	Start	Remarks	FAA #	Type	Make/Model	Helibase	Avail	Start	Remarks										
HB-312KA	1	KMAX	Willow	0830	0800	LL-Bucket A-13	Kern 407	2	UH1H	WRVL	0830	0800	Holst/tank A-116										
N132BH	3	Astar B3	Willow	0830	0800	Recon A-21	N127BH	3	Astar B3	WRVL	0830	0800	Short Haul A-27										
							N144X	3	Bell 407	WRVL	0830	0800	A-219										
Crash Rescue ENG 9243 at Willow																							
UAS																							
FAA #	Type	Make/Model	Base	Start	Stop	Remarks	FAA #	Type	Make/Model	Base	Avail	Start	Remarks										
UR 3-6	3	M 600	Willow	0800	2400	IR/EO/Plummer																	



HEALTH AND SAFETY MESSAGE

“Safety isn’t expensive, it’s priceless.” – Author Unknown

INCIDENT: SRF Lightning Complex

Date: September 8, 2022 Time: 0700-1900

Major Hazard and Risk:

- **Hazard Tree Safety:** Hazard trees, both dead snags and live green trees, are one of the most common risks encountered on the fire line.
- **Extended Extraction Times:** Be familiar with the medical plan. Develop a plan on how you would get an injured firefighter out timely manner.
- **Hazardous Roads:** Narrow roads, steep drop-offs, erratic drivers, and operator fatigue are all prevalent on this and other assignments.
- **Heat Related Injuries:** Stay hydrated, eat properly, drink fluids in a 3:1 ratio of water to sports drink, take frequent breaks, and pay attention to your body.
- **Dehydration:** - Ensure you and your personnel are staying hydrated. Fill up early.
- **Fatigue:** – Watch your people today, look for signs of fatigue and mitigate them.
- **Heavy Equipment:** – Be extremely careful around and below heavy equipment.

Narrative: Some of you are demobing and going home or leaving this complex and going to a new fire. Prepare for driving, make sure your vehicle is ready for the trip and get good rest before leaving. Don't drive over 10 hours and don't drive past 2200 hours at night. R.O.N. if you need to.

Helena Hot Shot - Sara Madsen
Rest in Peace – Sept. 2, 2020



On Sept. 2, 2020 at approximately 0021 hours, Idaho State Police investigated a single-vehicle crash south of Ashton, in Fremont County Idaho. Sara (age 24) was returning home to Tetonia, Idaho after a fire assignment with the Helena Hot Shots.

She started her love of natural resources as a Youth Conservation Corp member, later moving into the fire program where she served as a crewmember on a Type 2 IA Hand Crew from 2017 to 2019. Year 2020 was her first year as part of the Helena Hot Shot crew.

Lessons learned: When tired, pull over and rest and always wear your seatbelt. Every firefighter must make it home.

Hazard Tree Safety

Hazard Tree Indicators:

- ✓ **Trees that have burned**
- ✓ **Shallow tree root systems**
- ✓ **Dead & broken top trees**
- ✓ **Leaning or hung up trees**




Safety Officers: 

Rick Bertram, Tom Zeulner, Brent Kaiser

Prepared: September 7th, 2022

Incident Risk Analysis (ICS 215a)

CA-SRF-000620

BR/DIV	HAZARDOUS ACTIONS/CONDITIONS	MITIGATIONS/WARNINGS/REMEDIES
All	Hazard Trees	<ul style="list-style-type: none"> Follow "Hazard Tree Safety" guidelines, reference IRPG Post lookouts or use a spotter in mop-up areas with personnel. Don't park vehicles or take breaks in high concentrations of hazard trees. Establish trigger points for disengagement during high wind events. Remember that the hazard zone extends a minimum of 2 1/2 tree heights.
All	Extended Medical Extraction Times	<ul style="list-style-type: none"> Identify helispots and communicate Lat/Longs to DIVS. Be familiar with the medical plan and communicate 8 line promptly. Evaluate the necessity to send personnel into areas with limited access. Be aware of weather conditions (i.e., smoke inversions, rain, and high winds etc.) that could affect the ability of helicopters to reach you. Don't rely on helicopters exclusively.
All	Steep Terrain & Rolling Debris	<ul style="list-style-type: none"> Maintain 8'-10' spacing when working & walking. Don't work above any personnel. Be on the lookout for rolling rocks, debris, or burning material. Evaluate necessity to send personnel in areas with limited access.
All	Driving & Traffic	<ul style="list-style-type: none"> SCHOOL is back in session, watch for children there are lots of bus stops Practice "Defensive Driving" techniques traveling on all roads Use spotters and honk horn when backing. Follow Driving LCES (Lights, Chock blocks, Emergency brake, Seatbelts). Always use headlights and obey posted speed limits. Use chock blocks, turn wheels into hill. Avoid distractions (eating, cell phones, etc.) and use the 3 second rule.
All	Air Operations	<ul style="list-style-type: none"> Establish and ensure communications are adequate with helibase aircraft. Ensure work/rest policies are being met for the flight crews. Involve aviation leadership with operational planning to avoid risk/exposure Establish trigger points to disengage aviation resources. Utilize the appropriate aircraft for the mission. Always consider pilot exposure: RISK VS GAIN
Branch 1 Branch 10	Heavy Equipment Operations	<ul style="list-style-type: none"> Ensure communications are established with operators. Use hand signals if other communications are unavailable. Maintain a 50'-100' exclusion area around equipment and increase it to 2 1/2 times tree height when in timber. Use a spotter when backing. Avoid working below heavy equipment.
All	Fatigue \ Overexertion	<ul style="list-style-type: none"> Drink water and sports drinks throughout the day, before and after shift also Drink at a ratio of 2 waters to 1 sports drink Eat well and get plenty of sleep Stand down if needed during the heat of the day Come off the line and get into vehicle with A/C on Take more breaks during the hottest part of the day
All	Chipper \ Chainsaw Operations	<ul style="list-style-type: none"> Follow "Hazard Tree Safety" guidelines, reference IRPG Follow "Procedural Felling Operations", reference IRPG Only Chipper contractor can Feed the Chipper Ensure all personal safety gear is worn to address mechanical hazards Ensure personnel are spaced to ensure no one is accidentally pushed towards the chipper
Incident Name: SRF Lightning Complex		Operational Period: Day September 8, 2022
Operations: Scott Grasmick Travis Ederer Air Ops: John Crotty	Safety Officers: Rick Bertram Tom Zeulner Brent Kaiser	Date Prepared: September 7th, 2022
		

ICS 205 - INCIDENT RADIO COMMUNICATIONS PLAN				INCIDENT LOAD				CONTROLLED UNCLASSIFIED INFORMATION//BASIC	
1. Incident Name: SRF LIGHTNING COMPLEX		2. Date/Time Prepared Date: 09/07/2022 Time: 1930		3. Operational Period: Date From: 09/08/22 Date To: 09/08/22 Time From: 0700 Time To: 1900					
Incident Channels									
4. Communications									
Ch#	Function	Name	Assigned To	Rx Freq	Rx Tone	Tx Freq	Tx Tone	Mode	Notes
1	COMMAND	NIFC C4	ALL DIV	170.0000	(T4) 136.5	166.6750	(T4) 136.5	A	BRUSH MTN
2	COMMAND	NIFC C11	ALL DIV	170.6875	(T4) 136.5	166.5750	(T4) 136.5	A	SPIKE BUCK MTN
3	COMMAND	NIFC C57	ALL DIV	173.6000	(T4) 136.5	162.8125	(T4) 136.5	A	LONE PINE
4	COMMAND	NIFC C58	ALL DIV	173.6500	(T4) 136.5	165.9875	(T4) 136.5	A	IRONSIDE MTN
5	COMMAND	NIFC C8	ALL DIV	169.5375	(T4) 136.5	164.7125	(T4) 136.5	A	6N04 RD SADDLE
6	TACTICAL	NIFC T1	DIV A/R, CONTINGENCY	168.0500	(T4) 136.5	168.0500	(T4) 136.5	A	
7	TACTICAL	VFIRE 25	DIV D/G	154.2875	(T6) 156.7	154.2875	(T6) 156.7	A	
8	TACTICAL	NIFC T3	DIV N	168.6000	(T4) 136.5	168.6000	(T4) 136.5	A	
9	TACTICAL	NIFC T5	UNASSIGNED	166.7250	(T4) 136.5	166.7250	(T4) 136.5	A	
10	TACTICAL	NIFC T6	DIV J	166.7750	(T4) 136.5	166.7750	(T4) 136.5	A	
11	TACTICAL	NIFC T7	DIV U, DIV W	168.2500	(T4) 136.5	168.2500	(T4) 136.5	A	
12	TACTICAL	VFIRE 26	SUPPRESSION REPAIR	154.3025	(T6) 156.7	154.3025	(T6) 156.7	A	
13	A/G CMD	A/G CMD	ALL DIV	172.5500	0.0	172.5500	0.0	A	FOR OPS, AIR OPS, BRANCH, AND DIV SUPERVISOR USE ONLY
14	A/G TAC	A/G TAC	ALL DIV	164.8625	0.0	164.8625	0.0	A	
15	MEDICAL	CALCORD	EMS AIR COORDINATION	156.0750	(T6) 156.7	156.0750	(T6) 156.7	A	
16	AIRGUARD	AIRGUARD	EMERGENCY	168.6250	0.0	168.6250	(T1) 110.9	A	EMERGENCY ONLY
17									
18									
19									
20	AIRGUARD	AIRGUARD	EMERGENCY	168.6250	0.0	168.6250	(T1) 110.9	A	EMERGENCY ONLY
5. Special Instructions									
CURRENT CLONE IS SRF903. COMMAND CHANNELS LINKED. FIND WHICH COMMAND CHANNEL WORKS BEST IN YOUR AREA OF OPERATIONS. COMMUNICATION UNIT PHONE: 916-936-7511									
6. Prepared by (Communications Unit Leader): Name: GLENDON CHAN, COML						Signature: <i>/s/ Glendon Chan</i>			
ICS 205 - CONTROLLED UNCLASSIFIED INFORMATION//BASIC				Date/Time: 09/07/2022		1930			

ICS 205 - INCIDENT RADIO COMMUNICATIONS PLAN				INITIAL ATTACK				CONTROLLED UNCLASSIFIED INFORMATION//BASIC	
1. Incident Name:		2. Date/Time Prepared		3. Operational Period:					
SRF LIGHTNING COMPLEX		Date:	09/07/2022	Date From:	09/08/22	Date To:	09/08/22		
Page 2		Time:	1930	Time From:	0700	Time To:	1900		
4. Communications									
Ch#	Function	Name	Assigned To	Rx Freq	Rx Tone	Tx Freq	Tx Tone	Mode	Notes
1	COMMAND	SRF13	ALL DIV	172.3750	0.0	164.1750	(T13) 141.3	A	SRF FIRE NET TONE 13 / HORSE MOUNTAIN
2	COMMAND	SRF3	ALL DIV	172.3750	0.0	164.1750	(T3) 131.8	A	SRF FIRE NET TONE 3 / LONE PINE RIDGE
3	COMMAND	SHF4	ALL DIV	171.5750	0.0	165.0125	(T4) 136.5	A	SHF FIRE NET TONE 4 / HAY FORK BALLY
4	COMMAND	HIA FN	ALL DIV	155.3850	(T6) 156.7	150.8050	(T6) 156.7	A	HOOPA TONE 6
5	DISPATCH	HUU L	ALL DIV	151.2500	(T1) 110.9	159.4050	(T13) 141.3	A	CDF HUU LOCAL NET TONE 13 / HORSE MOUNTAIN
6	COMMAND	HUM CFN	ALL DIV	154.0700	0.0	159.0000	(T3) 131.8	A	HOMBOLDT COUNTY FIRE NET TONE 13 / WILLOW CREEK
7	TACTICAL	R5 T4	INITIAL ATTACK	166.5500	0.0	166.5500	0.0	A	R5 TAC 4
8	TACTICAL	R5 T5	INITIAL ATTACK	167.1125	0.0	167.1125	0.0	A	R5 TAC 5
9	TACTICAL	NIFC T2	INITIAL ATTACK	168.2000	0.0	168.2000	0.0	A	NIFC TAC 2
10	TACTICAL	CDF T3	INITIAL ATTACK	151.1750	(T16) 192.8	151.1750	(T16) 192.8	A	CDF TAC 3
11	TACTICAL	CDF T7	INITIAL ATTACK	151.3400	(T16) 192.8	151.3400	(T16) 192.8	A	CDF TAC 7
12	A/G	CDF A/G 3	ALL DIV	159.3675	(T16) 192.8	159.3675	(T16) 192.8	A	CDF AIR TO GROUND 3
13	A/G	AG-43	ALL DIV	167.6000	0.0	167.6000	0.0	A	SRF PRIMARY A/G
14	A/G	AG-08	ALL DIV	166.8750	0.0	166.8750	0.0	A	SRF SECONDARY A/G
15	MEDICAL	CALCORD	EMS AIR COORDINATION	156.0750	(T6) 156.7	156.0750	(T6) 156.7	A	
16	AIRGUARD	AIRGUARD	EMERGENCY	168.6250	0.0	168.6250	(T1) 110.9	A	EMERGENCY ONLY
17									
18									
19									
20	AIRGUARD	AIRGUARD	EMERGENCY	168.6250	0.0	168.6250	(T1) 110.9	A	EMERGENCY ONLY
5. Special Instructions									
CURRENT IA CLONE IS SRFIA903. COMMUNICATION UNIT PHONE: 916-936-7511									
6. Prepared by (Communications Unit Leader): Name: GLENDON CHAN, COM1						Signature: <i>/s/ Glendon Chan</i>			
ICS 205 - CONTROLLED UNCLASSIFIED INFORMATION//BASIC				NIMS IAP	Date/Time:	09/07/2022	1930		

TRAINING SPECIALIST MESSAGE



- A Training Specialist is assigned to the incident.
 - It is to your advantage to complete the quick registration process sooner than later.
 - The TNSP Desk located at ICP. You can also contact the TNSP, Jesse Roach, at 530-966-3459 for training related questions.
-

FINANCE MESSAGE

Email address: 2022.lightningcomplex.finance@firenet.gov

INTERIM PAYMENTS

Any contract equipment that has been here at least 14 days and is not on the demob list must receive an interim payment. Please see the Equipment folks in the Finance yurt or send an email to the address above to begin that process.

TIME

Electronic CTRs, Shift Tickets and agreement information can be emailed to the address above. Hard copy documents can also be dropped off in the Finance yurt. Please be sure to write legibly and print your name under your signature.

For demobing resources: Finance does not sign CTRs or shift tickets, please make sure your supervisor signs them prior to submitting to Finance.

COSTS

Send any costs for aircraft or national contracts (caterers, showers) to the email address above.

FIRE ITEMS REPLACEMENT

Cache Items – Complete a 213 signed by DIVS verifying lost or damaged items and explanation of circumstances and take to Ordering. Any items that cannot be filled by Supply will need FSC, INBA or IC signature to approve replacement for cache equivalent of lost/damaged items.

-Non-cache items/Claims - For replacement of non-cache items or claims please submit a completed OF-213 and OF-289. A determination for replacement based on the documentation provided will be made by the FSC, IC, or INBA.

-Damaged items will be surrendered to the Supply Unit. Replacement for normal wear and tear is through home unit project funds.



PUBLIC INFORMATION

Fire information line: 707-356-9442

2022.lightningcomplex@firenet.gov

For the latest fire information: www.inciweb.nwcg.gov/incident/8312/

Incoming U.S. Postal Service Mail:

(Recipient Name and Unit Designation)

General Delivery

c/o Lightning Complex Fire

Willow Creek, CA 95573

UPS/Fedex Delivery:

(Recipient Name and Unit Designation)

c/o Lightning Complex Fire

100 Kimtu Road

Willow Creek, CA 95573

We would appreciate photos from the field: fire activity, people at work, etc. Please EMAIL these photos and include the location, date taken, involved crew, and photo credit. If the photo has people working, **please make sure they are in full PPE.**

Online Information For The Public



STAGE 1 Fire Suppression Repair Cheat Sheet

Remember, if you have any doubts or questions about the ideal end state of these repairs, get in touch with a READ!

Overall Objective: Repair damage caused by suppression activities, and thus minimize short and long-term environmental impacts. Impacts caused by the direct effects of fire will be mitigated or corrected during this repair phase, only those impacts caused by the *suppression* of the fire.

General Guidelines for Stage 1 Repair (consult signed Suppression Repair Plan (SR Plan))

Dozer and Hand Lines:

- Construct water bars and/or rolling dips where access is no longer needed and erosion is a concern. Knock down berms into the fire line. (see SR Plan page 13)
- Firelines that cross draws/channels will be cleaned of debris and re-contoured (see SR Plan page 15)
- Remove suppression created fuels and logs from firelines via chipping, piling, lop & scatter, and decking, advised.
- Trench handlines should be pulled back and contoured.
- Obliterate hand lines where they intersect FS trails.
- Strategic firelines intended for future use should have suppression general debris chipped and little to no debris or brush scattered over them. Only pile after all other repair activities are complete.

Safety Zones, Drop Points, Helispots, Sling Sites, Staging Areas, etc:

- Restore to pre-existing condition.
- Knock down berms, de-compact soil, and restore natural drainage flows.
- Only pull enough slash across the area to reduce erosion and prevent further impacts.
- Chip and pile debris, as advised.

Roads and Trails:

- Clean ditches, side drains, rolling dips, and other drainage features along roads damaged by suppression activities (see SR Plan page 14).
- Where needed, water and grade surfaces and remove berms along roads impacted by suppression activities.
- Chip side-cast slash on roads, construct slash piles, lop and scatter, or deck logs, as advised.
- Repair damaged earthen barriers for Maintenance Level 1, decommissioned, and non-system roads (see SR Plan page 16).

Miscellaneous Resources:

- Maintain the integrity of Wilderness, Inventoried Roadless Areas and Wild and Scenic River Corridor characteristics
- **SITES WITH YELLOW/BLACK FLAGGING:** Sites: *No repair work may commence without consultation with an assigned Archaeologist and the Hoopa Tribal Representative, and/or and the lead Resource Advisor to the fire.*
- Remove all equipment, gear, hose, flagging, and trash from firelines and dispersal sites following repair actions.

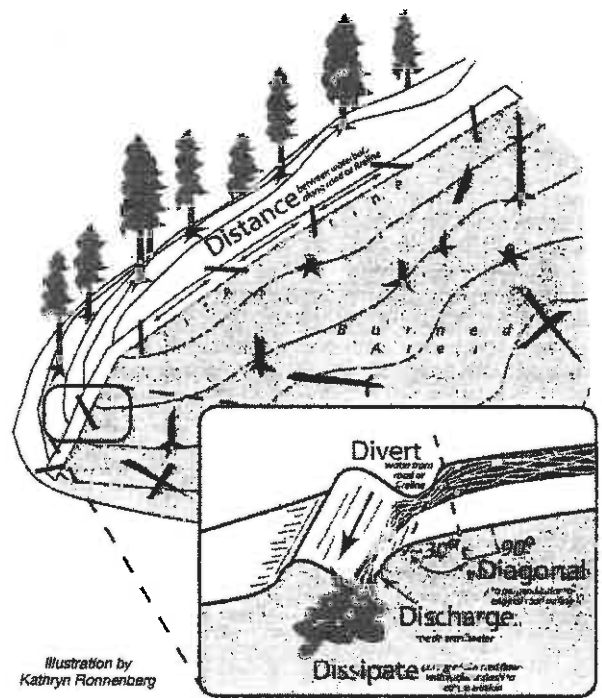
Fences and Gates:

- Repair any fences and gates damaged by suppression activities.

Water Sources:

- Remove dams, dikes, and other impoundments.
- Restore damaged stream banks to natural contours.
- Report fuel and oil spills.

Fireline slope %	Maximum Distance Apart (feet)
1 – 5	200
6 – 20	125
21 – 40	60
41 – 60	40
>60	25



For repairs along C6N06 & 06N08 – See READ for specific vehicle washing procedures!

Fire and COVID-19 Briefing Checklist

SRF LIGHTNING COMPLEX

Self-Awareness / Screening

- Notify supervisor if you or others experience:
 - Cough, more than expected
 - Difficulty breathing
 - Loss of taste or smell
 - Fever
 - Chills
 - Sore throat
 - Muscle pain
- Immediately separate yourself from others.
- Follow crew and division plans to isolate, triage, and transport symptomatic personnel.

Hygiene on the Fireline

- Properly wash or sanitize your hands often
- Avoid handshakes and communal use items
- Inform supervisor of needed resupply.
- Disinfect high touch surfaces often

Social distancing and protective equipment

- Practice social distancing
- Conduct briefings in conversations outdoors and at least SIX feet apart
- Utilize face coverings
- Clean or replace dirty face coverings, equipment, and PPE

Communications

- Ensure effective sender/receiver messaging.
- **Protect yourself, your crew, and your camp!**

Any questions contact:

MEDL Jim Emerson 805-570-9061

DEMOB LIST**1. Incident Name:**
SRF LIGHTNING COMPLEX**2. Operational Period:** Date From: 9/8/2022 Date To: 9/8/2022
Time From: 0700 Time To: 1900**DEMOB LIST**

REQUEST #	RESOURCE NAME	TIME
O-675.30	OSC2 MIKE MILKOVICH	0600
O-516	TFLD STEVEN SOVINSKI	0600
C-125	CRWC SHASTA 25	0600
O-83	DIVS TONY DAVIS	0600
O-517	HEBQ SEAN LOSCUDO	0600
O-491	DIVS JARROD ZWEIGART	0600
O-692	ASGS JEREMY BLAKE	0600
O-675.12	SITL MIKE HELD	0600
C-123	CRW1 BECKWOURTH IHC	0600
C-134	CRW1 WYOMING IHC	0600
C-122	CRW1 PLUMAS IHC	0600
C-121	CRW1 TAHOE IHC	0600
C-135	CRW1 PIONEER PEAK IHC	0600
O-732	DIVS ERIC HUSMANN	0600
O-524	HMGB BRENDON NELSON	0600
O-492	ORDM KRISTEN PARMENTER	0600
O-509	SOFR DANA PELTON	0600
O-460	TFLD PAUL PITTMAN	0600
O-443	FOBS CHRIS CARNEY	0600
E-492	ENG6 BALDWIN FORESTRY	0600
O-545	SEC2 CESAR ALCANTER-TORRES	0700
C-113	CRWC PLACER 4	0715

DEMOB PHONE: 916-936-7519
EMAIL: 2022.LIGHTNINGCOMPLEX.DEMOB@FIRENET.GOV
COME TO DEMOB UNIT AT SCHEDULED TIME TO START DEMOB.
DEMOB UNIT NEEDS 72 HOURS NOTICE FOR ALL FLIGHT REQUESTS.

DEMOB LIST**1. Incident Name:**
SRF LIGHTNING COMPLEX**2. Operational Period: Date From:** 9/8/2022 **Date To:** 9/8/2022
Time From: 0700 **Time To:** 1900**DEMOB LIST**

REQUEST #	RESOURCE NAME	TIME
O-500	EMTF DEREK LEONG	0730
O-502	EMTF BRANDEN WILSON	0745
E-410	ENG6 AZ-JCF-2215	0800
O-515	TFLD FREDRICK BURROWS	0815
O-518	HEQB WESLY MORGAN	0845
E-470	GWT1 B&B PORTABLE TOILETS	0900
O-519	HEQB TYSON LARGE	0915
O-533	RADO KEVIN FRATES	0930
O-551	THSP KATHLEEN NAVARRO	0945
O-675.18	LSC2 BOB FELDTZ	1000
E-401	ENG6 FIRE TRAX 677	1015
O-563	TFLD JAROD LEWIS	1030
O-574	FELB NOLAN HARRIS	1045
O-626	MEDL RONALD SANDLER	1100
O-662	EMPF DUSTIN PETERS	1115
O-546	HRSP PATRICK ACEVES	1130
O-609	DIVS DERRICK BRANHAM	1145
E-31	PUP1 VICTOR A DOBREC, JR	1200
O-620	DIVS JAIME HIDALGO	1215

DEMOB PHONE: 916-936-7519
EMAIL: 2022.LIGHTNINGCOMPLEX.DEMOB@FIRENET.GOV
COME TO DEMOB UNIT AT SCHEDULED TIME TO START DEMOB.
DEMOB UNIT NEEDS 72 HOURS NOTICE FOR ALL FLIGHT REQUESTS

HUMAN RESOURCES MESSAGE



"Well, I'll tell you Stew, I did battle some humungous waves.
But like I told the guy on ABC, danger is my business."

- Jeff Spicoli, Fast Times at Ridgemont High

As you get closer to the end of your shift do not get complacent in how you operate. Injuries and accidents happen when we start to get too comfortable and take short cuts. Take care of yourself and your extended family while on assignment.

Patrick Aceves, HRSP(T)

626-940-8076

LOGISTICS MESSAGE

SHOWER UNIT HOURS

ICP Location (near kitchen): 0500-1200 and 1400-2300

Lower Camp Location (near laundry): 0500-1200 and 1400-2200

KITCHEN HOURS

BREAKFAST: 0530-0930

DINNER: 1700-2130

SUPPLY HOURS: 0600-2130

GROUND SUPPORT: 0600-2100

FUEL TRUCK: 0700-2100

SAW SHOP: 0600-2130



CONTACT LIST

1. Incident Name:
SRF LIGHTNING COMPLEX

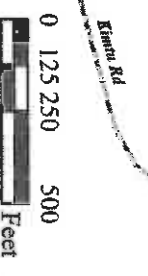
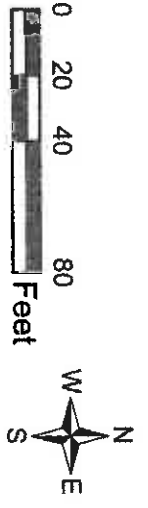
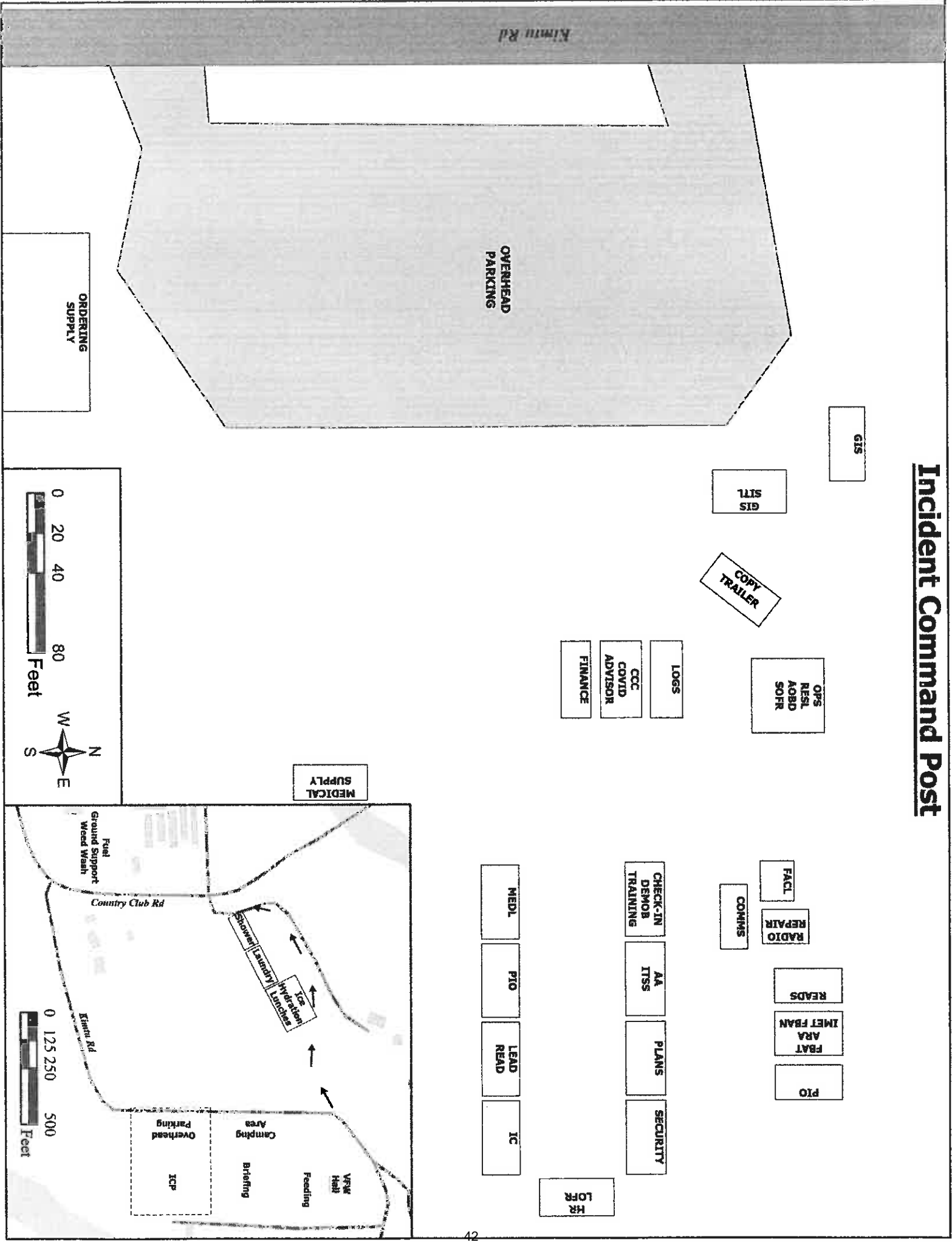
2. Operational Period:

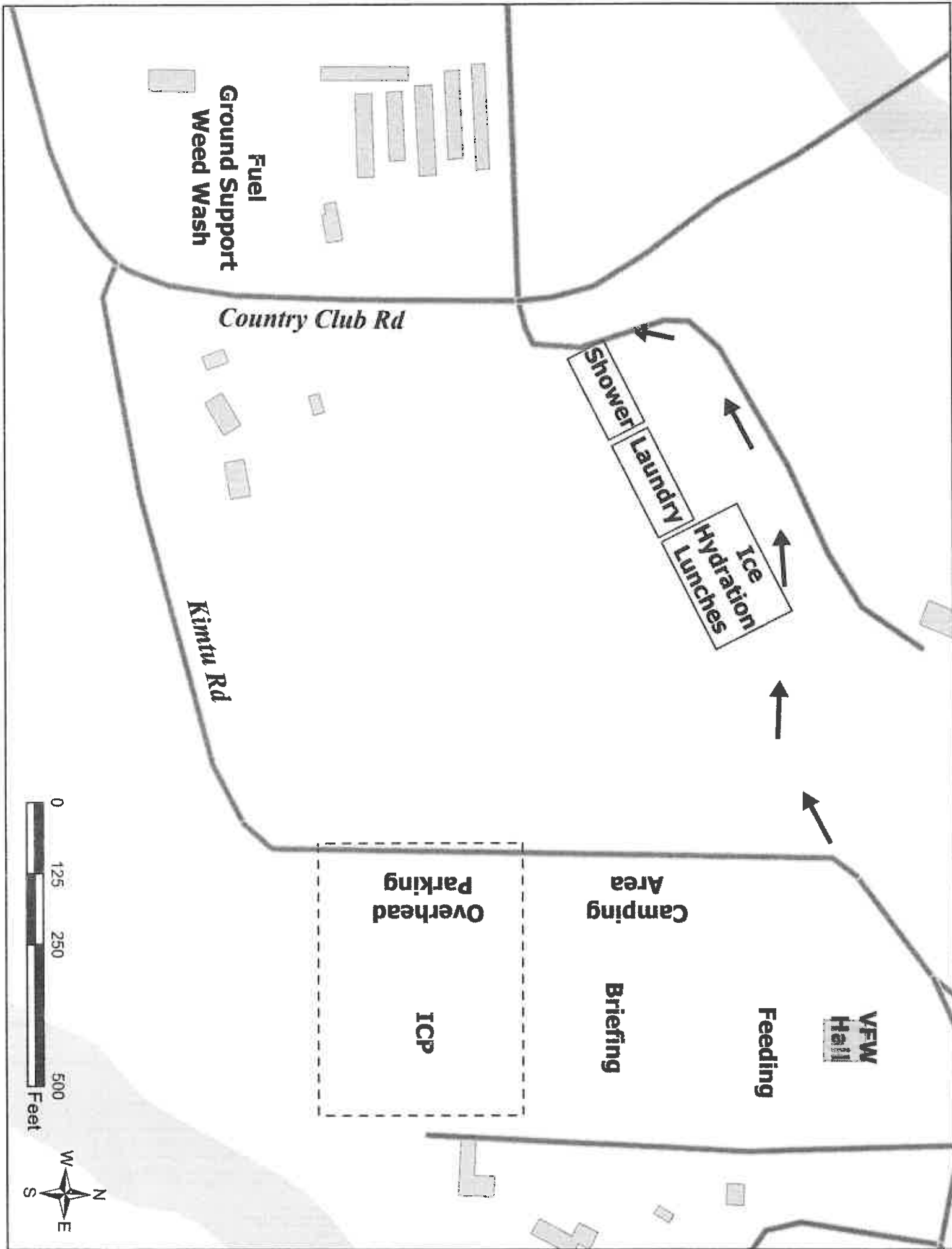
Date From: 9/8/2022 Date To: 9/8/2022
Time From: 0700 Time To: 1900

INCIDENT CONTACT LIST

INCIDENT COMMANDER	916-397-8944
INFORMATION	916-936-7508
BRANCH SAFETY	279-203-4502
FINANCE	279-203-4497
DEMOB	916-936-7519
COMMUNICATIONS	916-936-7511
ORDERING	916-936-7561
SUPPLY	279-203-4499
GROUND SUPPORT	279-203-4500
IT SUPPORT	279-203-4503

Incident Command Post





MEDICAL PLAN (ICS 206)

1. Incident Name: SRF LIGHTNING COMPLEX		2. Operational Period: Date From: 9/8/22 Date To: 9/8/22 Time From: 0700 Time To: 1900					
3. INCIDENT MEDICAL AID STATIONS							
Name	Location	Contact Number/Freq	R.N. & EMT				
Medical Support Trailer - Frontline Medical	ICP	Lightning Communications	Yes				
4.a. AIR AMBULANCES							
Name	Location	Contact	Level of Service				
Kern County H407 (24 Hour Hoist) / Type 2	Redding, CA	Lightning Communications	ALS				
Reach 5 (Air Ambulance) / Type 3	Redding, CA	Lightning Communications	ALS				
Cal Fire H102 (Daytime Hoist Only) / Type 2	Kneeland, CA	Lightning Communications	BLS				
CHP H14 / H16 (Daytime Hoist Only) / Type 3	Redding, CA	Lightning Communications	ALS				
4.b. GROUND AMBULANCES & REMS:							
Name	Location	Contact	Level of Service				
Wilderness Medics 1	Day: DP 240 / Night: ICP	Lightning Communications	ALS				
Mountain Medics 5	Day: DP 113 / Night: ICP	Lightning Communications	ALS				
Rough Country Medic 3	Day: DP 184 / Night: Burnt Ranch Spike	Lightning Communications	ALS				
Rough Country Medic 2	Day: DP 168 / Night: ICP	Lightning Communications	ALS				
REMS 1 / Backcountry	Day: DP 184	Lightning Communications	ALS				
REMS 4 / Wilderness Medics	Day: DP 155	Lightning Communications	ALS				
5. HOSPITALS							
Hospital Name	Address,	Lat & Long Helipad	Travel Time		Trauma Center	Burn Center	Helipad
	Phone Number	Helipad Designator	Air	Ground			Type
Mad River Community Hospital	3800 Janes Rd, Arcata, CA 95521 707-822-3621	Lat: 40° 53.72' N Long: 124° 05.45' W	20 Min	60 Min	Level 4	<input type="checkbox"/>	<input checked="" type="checkbox"/> Type 2
St Joseph Hospital	2700 Dolbeer St, Eureka, CA 95501 707-445-8121	Lat: 40° 47.0333' N Long: 124° 08.800' W	20 Min	105 Min	Level 3	<input type="checkbox"/>	<input checked="" type="checkbox"/> Type 2
Mercy Medical Center Redding	2175 Rosaline Ave, Redding, CA 96001 530-225-7201	Lat: 40° 34.33' N Long: 122° 23.80' W 7CA3	30 Min	2 Hrs	Level 2	<input type="checkbox"/>	<input checked="" type="checkbox"/> Type 2
University of California, Davis Medical Center	2315 Stockton Blvd., Sacramento, CA 95817 916-734-2011	Lat: 38° 33.32' N Long: 121° 27.35' W 3CL0	2 Hrs	4.5 Hrs	Level 1	<input checked="" type="checkbox"/>	<input checked="" type="checkbox"/> Type 2
6. MEDICAL EMERGENCY PROCEDURES							
LINE "MEDICAL EMERGENCY" PLAN:				LINE "NON-EMERGENCY INCIDENT" PLAN:			
<p>Crew Supervisor to contact Division Supervisor/Operations with:</p> <ul style="list-style-type: none"> - Patient Complaint, Condition and Location via Tactical or Command Frequency. Priority 1/Red & 2/Yellow patients - Triggers Incident within Incident (IWI) <p>Division Supervisor/*POC contacts Lightning Communications:</p> <ul style="list-style-type: none"> - Division Supervisor or *POC will run "Medical-Emergency" on Command Frequency. - Division Supervisor or *POC to use "Medical Plan (ICS 206 WF)" worksheet in the IAP or IRPG. - Communications contacts Medical Unit Leader on the Command Frequency or cell phone (909-558-5196) <p>*POC (Point of Contact)</p>				<p>Crew Supervisor to contact Division Supervisor with:</p> <ul style="list-style-type: none"> - Patient Complaint, Condition and Location via Tactical or Command Frequency. Priority 3/Green Patients - Does not trigger Incident within Incident (IWI). <p>Division Supervisor/POC Contacts Lightning Communications:</p> <ul style="list-style-type: none"> - Division Supervisor or *POC will run "Non-Emergency Incident" on the Command Frequency. - Division Supervisor or *POC to use "Medical Incident Report" worksheet on back of this page or in IRPG. - Communications contacts Medical Unit Leader on the Command Frequency or Cell Phone (909-558-5196) <p><u>IN-CAMP – 24 HOUR MEDICAL</u> Contact Lightning Communications with: Patient Complaint, Condition, and Location via phone or Command Frequency</p>			
7. Prepared by (Medical Unit Leader): Josh Fudge/Leif Julussen				Signature: /s/ Josh Fudge			
8. Approved by (Safety Officer): Rick Bertram/Tom Zeulner				Signature: /s/ Rick Bertram/Tom Zeulner			
ICS 206		NIMS IAP		Date/Time:		9/7/22 1800	

MEDICAL PLAN (ICS 206 WF)

Controlled Unclassified Information//Basic

Medical Incident Report					
FOR A NON-EMERGENCY INCIDENT, WORK THROUGH CHAIN OF COMMAND TO REPORT AND TRANSPORT INJURED PERSONNEL AS NECESSARY.					
FOR A MEDICAL EMERGENCY: IDENTIFY ON SCENE INCIDENT COMMANDER BY NAME AND POSITION AND ANNOUNCE "MEDICAL EMERGENCY" TO INITIATE RESPONSE FROM IMT COMMUNICATIONS/DISPATCH.					
Use the following items to communicate situation to communications/dispatch.					
1. CONTACT COMMUNICATIONS / DISPATCH (Verify correct frequency prior to starting report) <i>Ex: "Communications, Div. Alpha. Stand-by for Emergency Traffic."</i>					
2. INCIDENT STATUS: Provide incident summary (including number of patients) and command structure. <i>Ex: "Communications, I have a Red priority patient, unconscious, struck by a falling tree. Requesting air ambulance to Forest Road 1 at (Lat./Long.) This will be the Trout Meadow Medical, IC is TFLD Jones. EMT Smith is providing medical care."</i>					
Severity of Emergency / Transport Priority	<input type="checkbox"/> RED / PRIORITY 1 Life or limb threatening injury or illness. Evacuation need is IMMEDIATE <i>Ex: Unconscious, difficulty breathing, bleeding severely, 2nd - 3rd burns more than 4 palm sizes, heat stroke, disoriented.</i> <input type="checkbox"/> YELLOW / PRIORITY 2 Serious injury or illness. Evacuation may be DELAYED if necessary. <i>Ex: Significant trauma, unable to walk, 2nd - 3rd burns not more than 1-3 palm sizes.</i> <input type="checkbox"/> GREEN / PRIORITY 3 Minor injury or illness. Non-Emergency transport <i>Ex: Sprains, strains, minor heat-related illness.</i>				
Nature of Injury or Illness & Mechanism of Injury			Brief Summary of Injury or Illness <i>(Ex: Unconscious, Struck by Falling Tree)</i>		
Transport Request			Air Ambulance / Short Haul/Hoist Ground Ambulance / Other		
Patient Location			Descriptive Location & Lat. / Long. (WGS84)		
Incident Name			Geographic Name + "Medical" <i>(Ex: Trout Meadow Medical)</i>		
On-Scene Incident Commander			Name of on-scene IC of Incident within an Incident <i>(Ex: TFLD Jones)</i>		
Patient Care			Name of Care Provider <i>(Ex: EMT Smith)</i>		
3. INITIAL PATIENT ASSESSMENT: Complete this section for each patient as applicable (start with the most severe patient)					
Patient Assessment: See IRPG page 106					
Treatment:					
4. TRANSPORT PLAN:					
Evacuation Location (if different): (Descriptive Location (drop point, intersection, etc.) or Lat. / Long.) Patient's ETA to Evacuation Location:					
Helispot / Extraction Site Size and Hazards:					
5. ADDITIONAL RESOURCES / EQUIPMENT NEEDS:					
<i>Example: Paramedic/EMT, Crews, Immobilization Devices, AED, Oxygen, Trauma Bag, IV/Fluid(s), Splints, Rope rescue, Wheeled litter, HAZMAT, Extrication</i>					
6. COMMUNICATIONS: Identify State Air/Ground EMS Frequencies and Hospital Contacts as applicable					
Function	Channel Name/Number	Receive (RX)	Tone/NAC *	Transmit (TX)	Tone/NAC *
COMMAND					
AIR-TO-GROUND					
TACTICAL					
7. CONTINGENCY: Considerations: If primary options fail, what actions can be implemented in conjunction with primary evacuation method? Be thinking ahead.					
8. ADDITIONAL INFORMATION: Updates/Changes, etc.					
REMEMBER: Confirm ETA's of resources ordered. Act according to your level of training. Be Alert. Keep Calm. Think Clearly. Act Decisively.					

