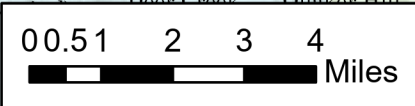


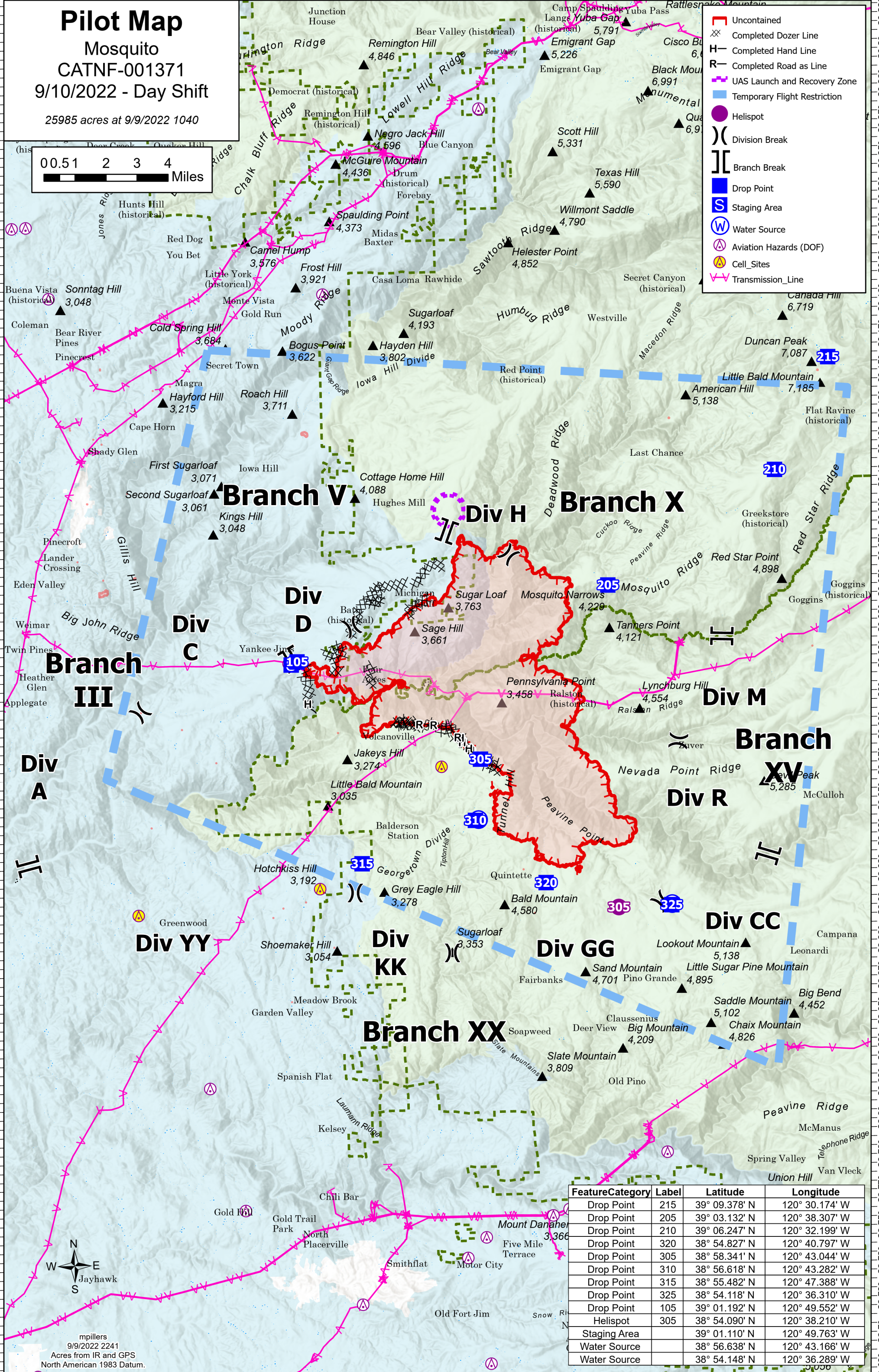
Pilot Map

Mosquito
CATNF-001371
9/10/2022 - Day Shift

25985 acres at 9/9/2022 1040



- ▬ Uncontained
- XX Completed Dozer Line
- H Completed Hand Line
- R Completed Road as Line
- ▬ UAS Launch and Recovery Zone
- ▬ Temporary Flight Restriction
- Helispot
- ⊗ Division Break
- ⌋ Branch Break
- Drop Point
- S Staging Area
- W Water Source
- ⊗ Aviation Hazards (DOF)
- ⊗ Cell_Sites
- ↔ Transmission_Line



Feature	Category	Label	Latitude	Longitude
Drop Point	215		39° 09.378' N	120° 30.174' W
Drop Point	205		39° 03.132' N	120° 38.307' W
Drop Point	210		39° 06.247' N	120° 32.199' W
Drop Point	320		38° 54.827' N	120° 40.797' W
Drop Point	305		38° 58.341' N	120° 43.044' W
Drop Point	310		38° 56.618' N	120° 43.282' W
Drop Point	315		38° 55.482' N	120° 47.388' W
Drop Point	325		38° 54.118' N	120° 36.310' W
Drop Point	105		39° 01.192' N	120° 49.552' W
Helispot	305		38° 54.090' N	120° 38.210' W
Staging Area			39° 01.110' N	120° 49.763' W
Water Source			38° 56.638' N	120° 43.166' W
Water Source			38° 54.148' N	120° 36.289' W



mpillers
9/9/2022 2241
Acres from IR and GPS
North American 1983 Datum.