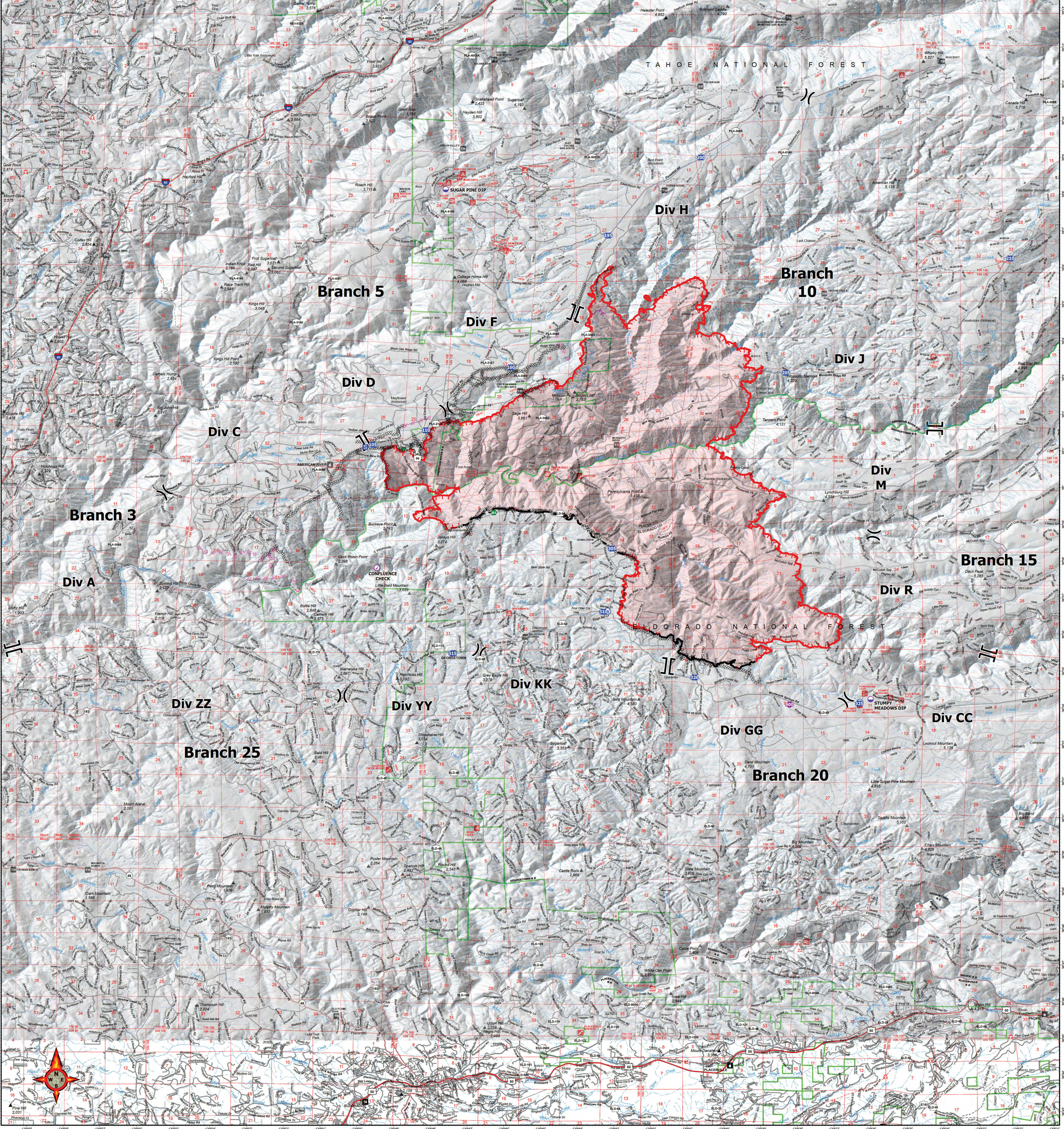


Drop Point	215	39° 09.378' N	120° 30.175' W
Drop Point	205	39° 03.132' N	120° 38.308' W
Drop Point	210	39° 06.247' N	120° 32.200' W
Drop Point	320	38° 54.827' N	120° 40.799' W
Drop Point	305	38° 58.341' N	120° 43.046' W
Drop Point	310	38° 56.618' N	120° 43.283' W
Drop Point	315	38° 55.482' N	120° 47.389' W
Drop Point	325	38° 54.118' N	120° 36.311' W
Drop Point	105	39° 01.192' N	120° 49.553' W
Drop Point	160	39° 03.280' N	120° 45.799' W
Drop Point	110	39° 01.563' N	120° 48.113' W
Drop Point	195	39° 06.870' N	120° 43.148' W
Drop Point	200	39° 08.998' N	120° 40.625' W
Helispot	900	38° 54.090' N	120° 38.211' W



TRANSPORTATION
MOSQUITO
9/11/2022

- Label Point
- Air Operations
- Aviation Check Point
- Dip Site
- Helispot
- Assignment Breaks
- Division Break
- Branch Break
- Logistics
- Drop Point
- Staging Area
- Reference
- Other
- Repair Point
- Fence - Cut/Damaged
- Water Source
- Completed Dozer Line
- Completed Hand Line
- Completed Road as Line
- Planned Dozer Line
- Planned Hand Line
- Contained
- Uncontained
- Wildfire Daily Fire Perimeter
- Summit; Gap
- GNIS Populated Places Some
- FS Offices
- S_USABuildingUSE_SUBCATEGORY
- Ranger District Office
- Region/Supervisor Office
- FS National Recreation Sites
- SITE_TYPE
- Campground

TRANSPORTATION
MOSQUITO
CATNF-001371
9/11/2022










NAD83 UTM 11N 80 ft. Contours 1:60,000

Prepared by: CAIDMFS 9/10/2022 23:29