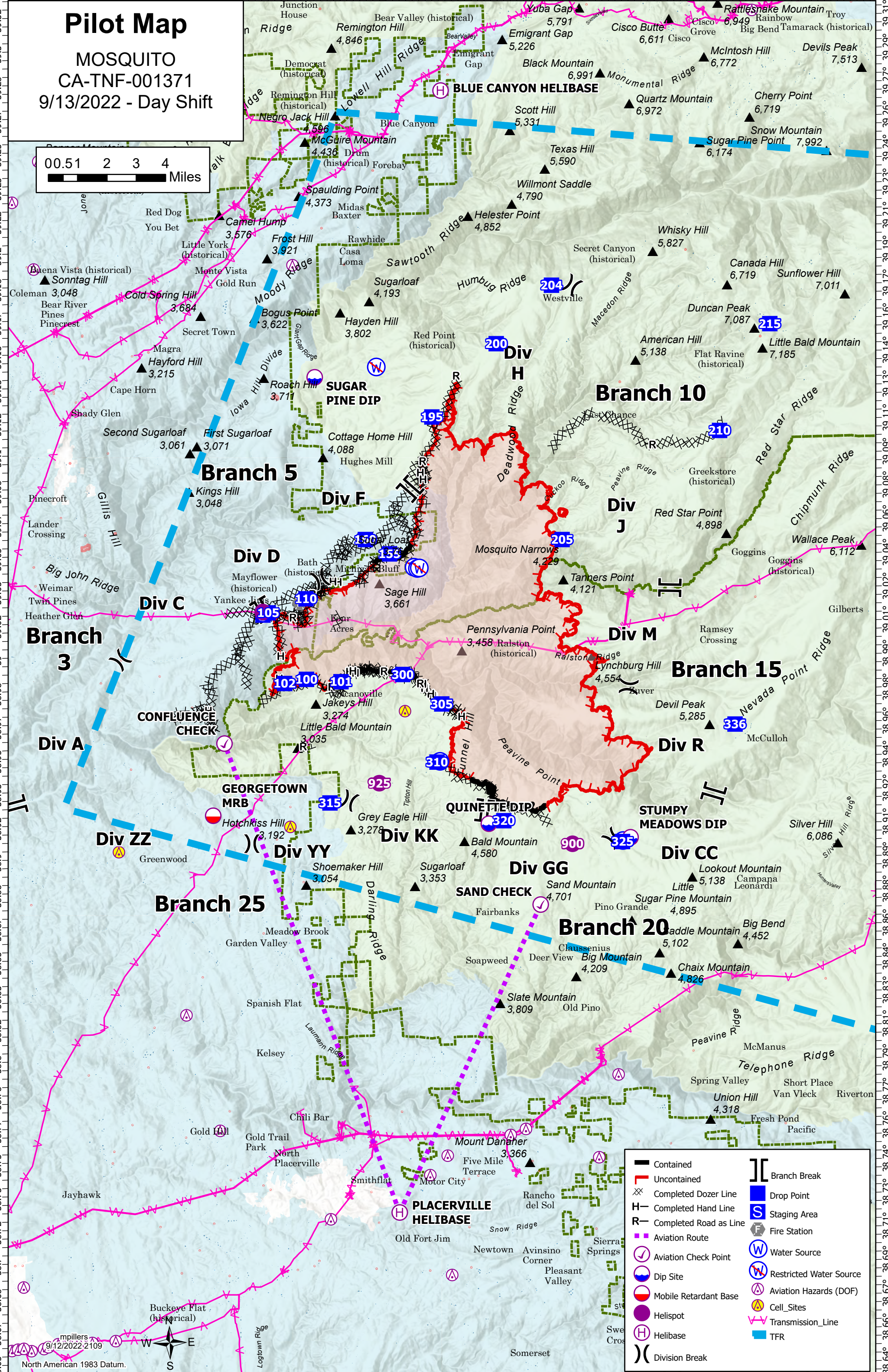
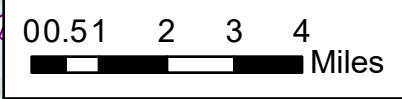


Pilot Map

MOSQUITO
CA-TNF-001371
9/13/2022 - Day Shift



—	Contained		Branch Break
—	Uncontained	■	Drop Point
⊗	Completed Dozer Line	■	Staging Area
H	Completed Hand Line	⊙	Fire Station
R	Completed Road as Line	⊙	Water Source
—	Aviation Route	⊙	Restricted Water Source
⊙	Aviation Check Point	⊙	Aviation Hazards (DOF)
⊙	Dip Site	⊙	Cell_Sites
⊙	Mobile Retardant Base	⊙	Transmission_Line
⊙	Helispot	⊙	TFR
H	Helibase		
)	Division Break		

North American 1983 Datum.
9/12/2022, 2:10:09

FeatureCategory	Label	Latitude	Longitude
Aviation Check Point	CONFLUENCE CHECK	38° 57.820' N	120° 49.450' W
Aviation Check Point	SAND CHECK	38° 52.310' N	120° 39.480' W
Dip Site	QUINETTE DIP	38° 54.750' N	120° 41.370' W
Dip Site	STUMPY MEADOWS DIP	38° 54.239' N	120° 36.000' W
Dip Site	SUGAR PINE DIP	39° 08.135' N	120° 47.575' W
Drop Point	100	38° 59.170' N	120° 48.167' W
Drop Point	101	38° 59.075' N	120° 46.857' W
Drop Point	102	38° 59.063' N	120° 49.002' W
Drop Point	105	39° 01.192' N	120° 49.553' W
Drop Point	110	39° 01.563' N	120° 48.113' W
Drop Point	155	39° 02.835' N	120° 44.889' W
Drop Point	160	39° 03.280' N	120° 45.799' W
Drop Point	195	39° 06.870' N	120° 43.148' W
Drop Point	200	39° 08.998' N	120° 40.625' W
Drop Point	204	39° 10.692' N	120° 38.460' W
Drop Point	205	39° 03.132' N	120° 38.308' W
Drop Point	210	39° 06.247' N	120° 32.200' W
Drop Point	215	39° 09.378' N	120° 30.175' W
Drop Point	300	38° 59.245' N	120° 44.500' W
Drop Point	305	38° 58.341' N	120° 43.046' W
Drop Point	310	38° 56.618' N	120° 43.283' W
Drop Point	315	38° 55.482' N	120° 47.389' W
Drop Point	320	38° 54.827' N	120° 40.799' W
Drop Point	325	38° 54.118' N	120° 36.311' W
Drop Point	336	38° 57.517' N	120° 31.915' W
Fire Station		39° 01.435' N	120° 48.361' W
Helibase	BLUE CANYON HELIBASE	39° 16.557' N	120° 42.503' W
Helibase	PLACERVILLE HELIBASE	38° 43.270' N	120° 45.120' W
Helispot	900	38° 54.090' N	120° 38.211' W
Helispot	925	38° 56.034' N	120° 45.496' W
Helispot	950	39° 01.201' N	120° 49.770' W
Mobile Retardant Base	GEORGETOWN MRB	38° 55.185' N	120° 51.837' W
Restricted Water Source		38° 50.887' N	120° 09.799' W
Restricted Water Source		38° 51.293' N	120° 08.487' W
Restricted Water Source		39° 09.640' N	120° 19.727' W
Restricted Water Source		38° 52.199' N	120° 11.503' W
Restricted Water Source		39° 02.422' N	120° 43.969' W
Restricted Water Source		39° 10.556' N	120° 15.031' W
Restricted Water Source		38° 50.834' N	120° 10.132' W
Restricted Water Source		39° 08.396' N	120° 45.219' W
Restricted Water Source		38° 51.100' N	120° 09.932' W
Restricted Water Source		38° 52.538' N	120° 10.158' W
Restricted Water Source		39° 02.382' N	120° 43.845' W
Restricted Water Source		39° 02.397' N	120° 43.771' W
Staging Area		39° 01.110' N	120° 49.764' W
Water Source		38° 56.638' N	120° 43.167' W
Water Source		38° 54.148' N	120° 36.290' W