

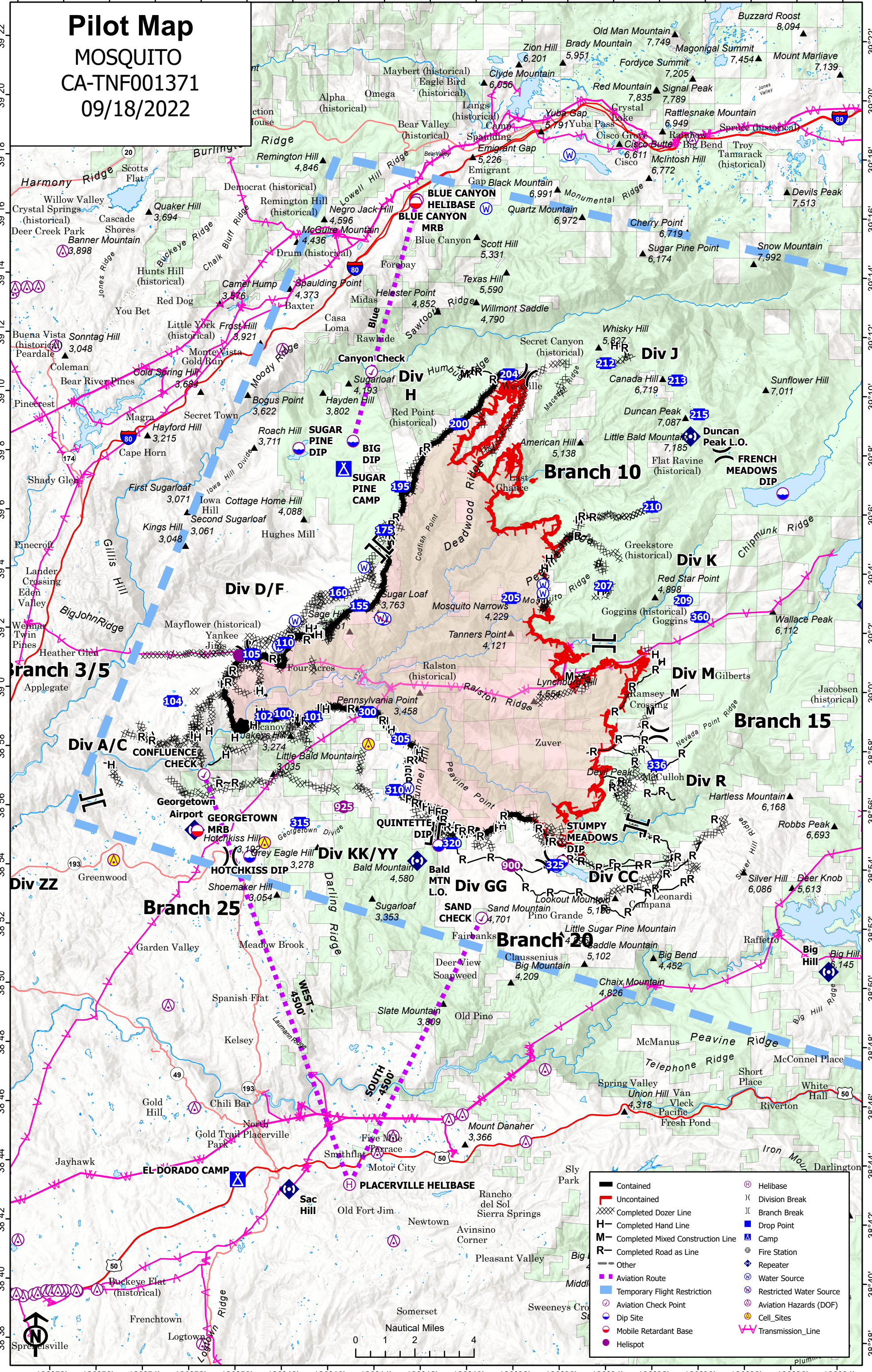
-121°0' -120°58' -120°56' -120°54' -120°52' -120°50' -120°48' -120°46' -120°44' -120°42' -120°40' -120°38' -120°36' -120°34' -120°32' -120°30' -120°28' -120°26' -120°24'

Pilot Map

MOSQUITO

CA-TNF001371

09/18/2022



—	Contained	⊙	Helibase
—	Uncontained	⊗	Division Break
⊗	Completed Dozer Line		Branch Break
H	Completed Hand Line	⬇	Drop Point
M	Completed Mixed Construction Line	⬆	Camp
R	Completed Road as Line	⚡	Fire Station
—	Other	⬇	Repeater
—	Aviation Route	⊙	Water Source
—	Temporary Flight Restriction	⊙	Restricted Water Source
⊙	Aviation Check Point	⊙	Aviation Hazards (DOF)
⊙	Dip Site	⊙	Cell_Sites
⊙	Mobile Retardant Base	⊙	Transmission_Line
⊙	Helispot		

0 1 2 4
Nautical Miles

-120°58' -120°56' -120°54' -120°52' -120°50' -120°48' -120°46' -120°44' -120°42' -120°40' -120°38' -120°36' -120°34' -120°32' -120°30' -120°28' -120°26' -120°24'

MOSQUITO FIRE (CA-TNF-001371) – POINT COORDINATES – 09/18/2022

FeatureCategory	Label	Latitude	Longitude	FeatureCategory	Label	Latitude	Longitude
Aviation Check Point	Canyon Check	39° 10.745' N	120° 44.437' W	Helispot	900	38° 54.090' N	120° 38.211' W
Aviation Check Point	CONFLUENCE CHECK	38° 57.820' N	120° 49.450' W	Helispot	925	38° 56.034' N	120° 45.496' W
Aviation Check Point	SAND CHECK	38° 52.310' N	120° 39.480' W	Helispot	950	39° 01.201' N	120° 49.770' W
Camp	EL DORADO CAMP	38° 43.413' N	120° 49.953' W	Incident Command Post		38° 45.429' N	121° 17.608' W
Camp	SUGAR PINE CAMP	39° 07.455' N	120° 45.618' W	Landmark		39° 06.620' N	120° 37.576' W
Dip Site	BIG DIP	39° 08.396' N	120° 45.219' W	Mobile Retardant Base	BLUE CANYON MRB	39° 16.467' N	120° 42.577' W
Dip Site	FRENCH MEADOWS DIP	39° 06.713' N	120° 26.519' W	Mobile Retardant Base	GEORGETOWN MRB	38° 55.185' N	120° 51.837' W
Dip Site	HOTCHKISS DIP	38° 54.328' N	120° 49.559' W	Repeater	Bald MTN L.O.	38° 54.224' N	120° 42.294' W
Dip Site	QUINETTE DIP	38° 54.750' N	120° 41.370' W	Repeater	Big Hill	38° 50.550' N	120° 24.433' W
Dip Site	STUMPY MEADOWS DIP	38° 54.239' N	120° 36.000' W	Repeater	Bunker Hill	39° 02.968' N	120° 22.837' W
Dip Site	SUGAR PINE DIP	39° 08.135' N	120° 47.575' W	Repeater	Duncan Peak L.O.	39° 08.626' N	120° 30.546' W
Drop Point	100	38° 59.170' N	120° 48.167' W	Repeater	Georgetown Airport	38° 55.209' N	120° 51.958' W
Drop Point	101	38° 59.075' N	120° 46.857' W	Repeater	Sac Hill	38° 43.096' N	120° 47.729' W
Drop Point	102	38° 59.063' N	120° 49.002' W	Restricted Water Source		39° 02.382' N	120° 43.845' W
Drop Point	104	38° 59.558' N	120° 52.957' W	Restricted Water Source		39° 02.397' N	120° 43.771' W
Drop Point	105	39° 01.192' N	120° 49.553' W	Restricted Water Source		39° 02.422' N	120° 43.969' W
Drop Point	110	39° 01.563' N	120° 48.113' W	Restricted Water Source		39° 10.556' N	120° 15.031' W
Drop Point	155	39° 02.835' N	120° 44.889' W	Restricted Water Source		39° 09.640' N	120° 19.727' W
Drop Point	160	39° 03.280' N	120° 45.799' W	Restricted Water Source		38° 50.827' N	120° 05.937' W
Drop Point	175	39° 05.399' N	120° 43.832' W	Restricted Water Source		38° 50.854' N	120° 08.474' W
Drop Point	195	39° 06.870' N	120° 43.148' W	Restricted Water Source		38° 51.293' N	120° 08.487' W
Drop Point	200	39° 08.998' N	120° 40.625' W	Restricted Water Source		38° 50.348' N	120° 07.875' W
Drop Point	204	39° 10.692' N	120° 38.460' W	Restricted Water Source		38° 50.488' N	120° 08.434' W
Drop Point	205	39° 03.132' N	120° 38.308' W	Restricted Water Source		38° 50.834' N	120° 10.132' W
Drop Point	207	39° 03.557' N	120° 34.292' W	Restricted Water Source		38° 51.100' N	120° 09.932' W
Drop Point	209	39° 03.082' N	120° 30.823' W	Restricted Water Source		38° 50.887' N	120° 09.799' W
Drop Point	210	39° 06.247' N	120° 32.200' W	Restricted Water Source		38° 52.538' N	120° 10.158' W
Drop Point	212	39° 11.087' N	120° 34.257' W	Restricted Water Source		38° 52.199' N	120° 11.503' W
Drop Point	213	39° 10.518' N	120° 31.132' W	Restricted Water Source		38° 51.626' N	120° 06.723' W
Drop Point	215	39° 09.378' N	120° 30.175' W	Restricted Water Source		38° 51.513' N	120° 07.016' W
Drop Point	300	38° 59.245' N	120° 44.500' W	Restricted Water Source		38° 51.373' N	120° 08.148' W
Drop Point	305	38° 58.341' N	120° 43.046' W	Restricted Water Source		38° 50.701' N	120° 07.282' W
Drop Point	310	38° 56.618' N	120° 43.283' W	Water Source		38° 56.638' N	120° 43.167' W
Drop Point	315	38° 55.482' N	120° 47.389' W	Water Source		38° 54.148' N	120° 36.290' W
Drop Point	320	38° 54.827' N	120° 40.799' W	Water Source		39° 02.308' N	120° 47.673' W
Drop Point	325	38° 54.118' N	120° 36.311' W	Water Source		39° 18.129' N	120° 35.886' W
Drop Point	336	38° 57.517' N	120° 31.915' W	Water Source		39° 16.289' N	120° 39.505' W
Drop Point	360	39° 02.530' N	120° 30.089' W	Water Source		39° 01.449' N	120° 48.395' W
Fire Station		39° 01.435' N	120° 48.361' W	Water Source		39° 04.135' N	120° 44.700' W
Helibase	BLUE CANYON HELIBASE	39° 16.557' N	120° 42.503' W	Water Source		39° 03.587' N	120° 36.921' W
Helibase	PLACERVILLE HELIBASE	38° 43.270' N	120° 45.120' W	Water Source		39° 03.305' N	120° 36.919' W