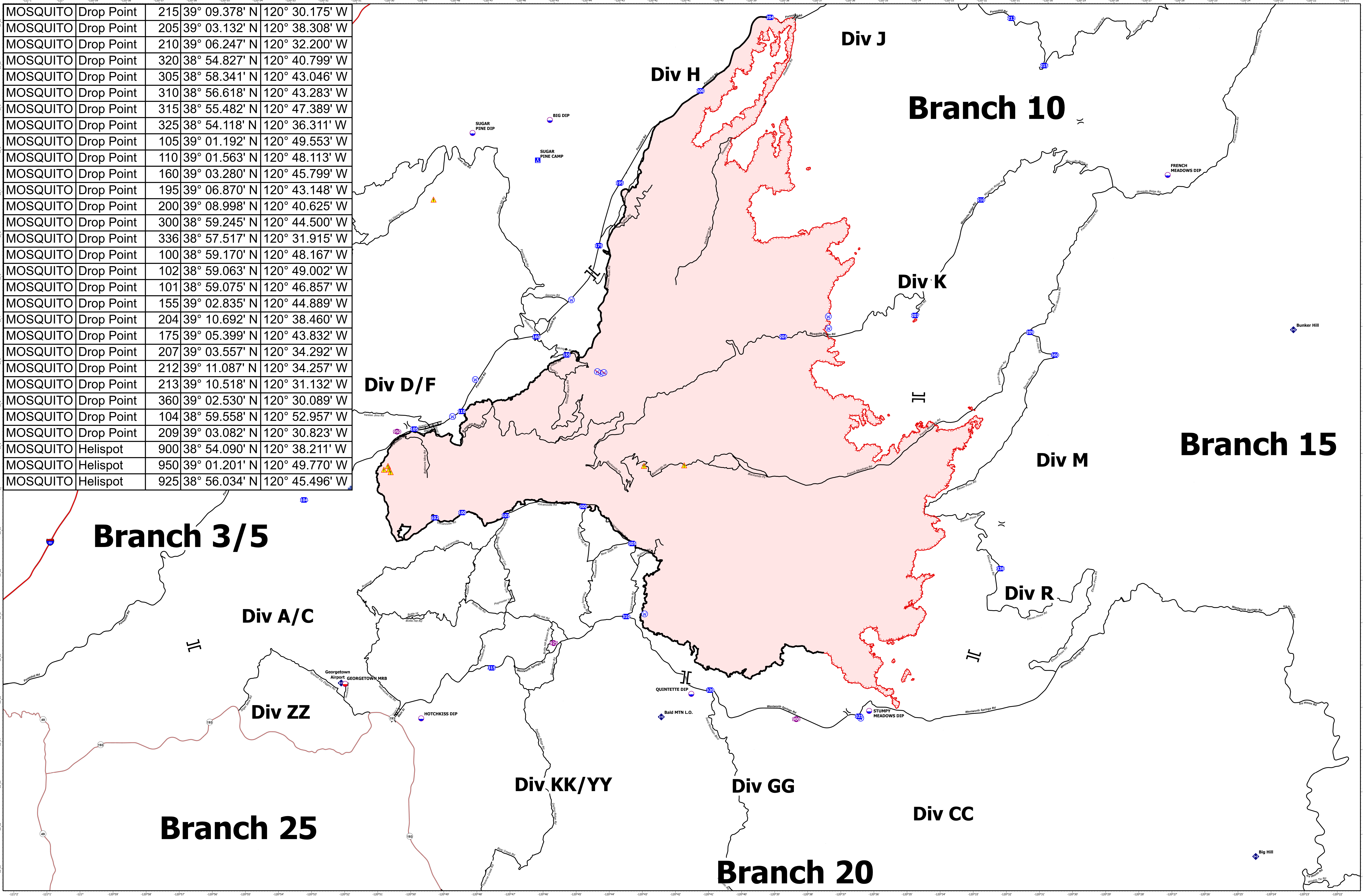


MOSQUITO	Drop Point	215	39° 09.378' N	120° 30.175' W
MOSQUITO	Drop Point	205	39° 03.132' N	120° 38.308' W
MOSQUITO	Drop Point	210	39° 06.247' N	120° 32.200' W
MOSQUITO	Drop Point	320	38° 54.827' N	120° 40.799' W
MOSQUITO	Drop Point	305	38° 58.341' N	120° 43.046' W
MOSQUITO	Drop Point	310	38° 56.618' N	120° 43.283' W
MOSQUITO	Drop Point	315	38° 55.482' N	120° 47.389' W
MOSQUITO	Drop Point	325	38° 54.118' N	120° 36.311' W
MOSQUITO	Drop Point	105	39° 01.192' N	120° 49.553' W
MOSQUITO	Drop Point	110	39° 01.563' N	120° 48.113' W
MOSQUITO	Drop Point	160	39° 03.280' N	120° 45.799' W
MOSQUITO	Drop Point	195	39° 06.870' N	120° 43.148' W
MOSQUITO	Drop Point	200	39° 08.998' N	120° 40.625' W
MOSQUITO	Drop Point	300	38° 59.245' N	120° 44.500' W
MOSQUITO	Drop Point	336	38° 57.517' N	120° 31.915' W
MOSQUITO	Drop Point	100	38° 59.170' N	120° 48.167' W
MOSQUITO	Drop Point	102	38° 59.063' N	120° 49.002' W
MOSQUITO	Drop Point	101	38° 59.075' N	120° 46.857' W
MOSQUITO	Drop Point	155	39° 02.835' N	120° 44.889' W
MOSQUITO	Drop Point	204	39° 10.692' N	120° 38.460' W
MOSQUITO	Drop Point	175	39° 05.399' N	120° 43.832' W
MOSQUITO	Drop Point	207	39° 03.557' N	120° 34.292' W
MOSQUITO	Drop Point	212	39° 11.087' N	120° 34.257' W
MOSQUITO	Drop Point	213	39° 10.518' N	120° 31.132' W
MOSQUITO	Drop Point	360	39° 02.530' N	120° 30.089' W
MOSQUITO	Drop Point	104	38° 59.558' N	120° 52.957' W
MOSQUITO	Drop Point	209	39° 03.082' N	120° 30.823' W
MOSQUITO	Helispot	900	38° 54.090' N	120° 38.211' W
MOSQUITO	Helispot	950	39° 01.201' N	120° 49.770' W
MOSQUITO	Helispot	925	38° 56.034' N	120° 45.496' W



TRANSPORTATION
MOSQUITO
9/18/2022

**TRANSPORTATION
MOSQUITO**
CA-TNF-001371
9/18/2022

0 1 2 3 Miles

NAD83 UTM 11N 1:50,000

Prepared by: CIMTS 9/17/2022 22:53

- Dip Site
- Mobile Retardant Base
- Helispot
-) Division Break

- Branch Break
- Drop Point
- A Camp
- Fire Station

- ◆ Repeater
- ▲ Hazard
- ⊕ Water Source
- ⊖ Restricted Water Source

- Contained
- Uncontained
- Wildfire Daily Fire Perimeter

TRANSPORTATION
MOSQUITO
9/18/2022