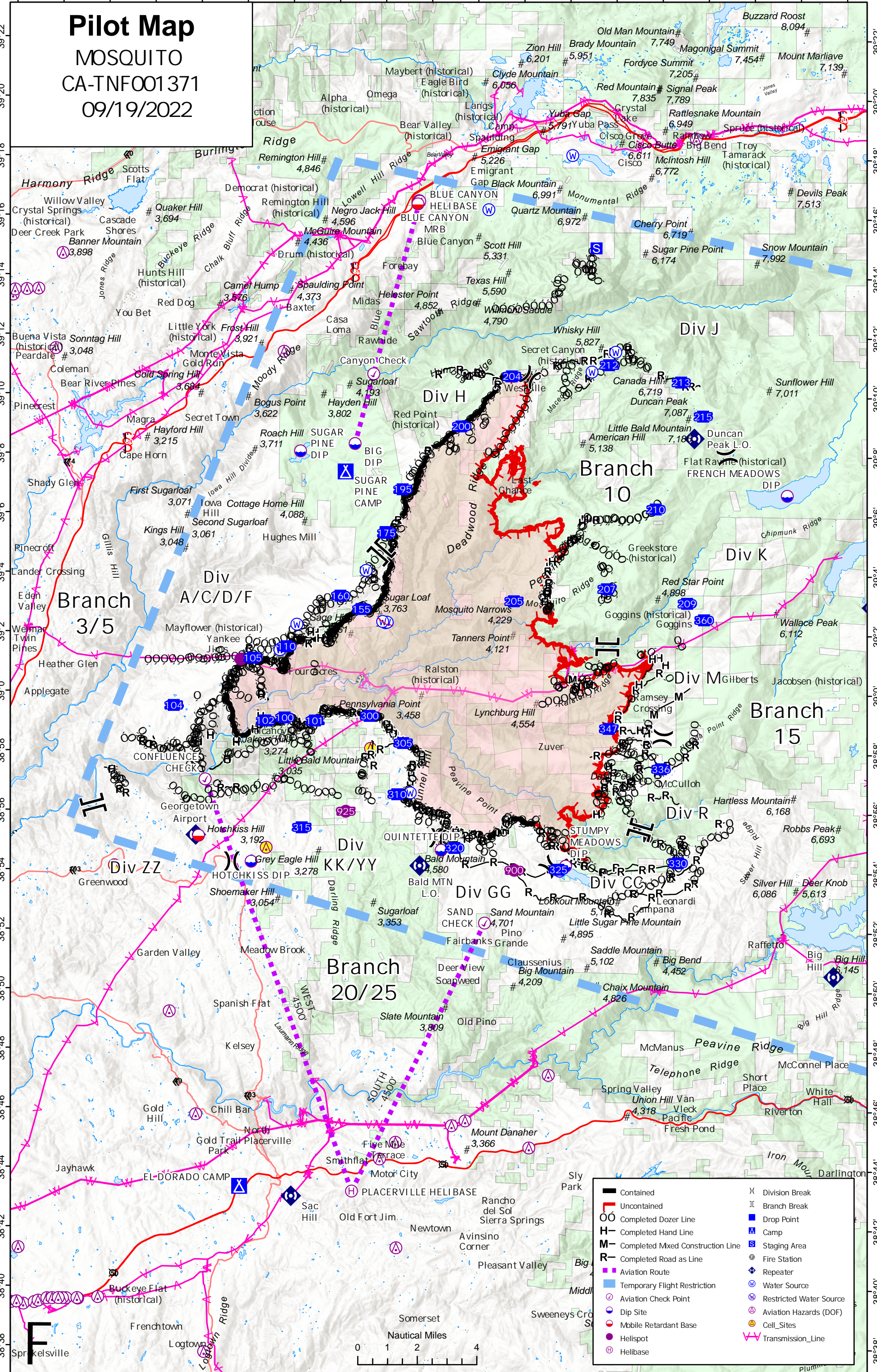


-121°0' -120°58' -120°56' -120°54' -120°52' -120°50' -120°48' -120°46' -120°44' -120°42' -120°40' -120°38' -120°36' -120°34' -120°32' -120°30' -120°28' -120°26' -120°24'



**Pilot Map**  
MOSQUITO  
CA-TNFO01371  
09/19/2022

	Contained		Division Break
	Uncontained		Branch Break
	Completed Dozer Line		Drop Point
	Completed Hand Line		Camp
	Completed Mixed Construction Line		Staging Area
	Completed Road as Line		Fire Station
	Aviation Route		Repeater
	Temporary Flight Restriction		Water Source
	Aviation Check Point		Restricted Water Source
	Dip Site		Aviation Hazards (DOF)
	Mobile Retardant Base		Cell_Sites
	Helispot		Transmission_Line
	Helibase		

Nautical Miles  
0 1 2 4

-120°58' -120°56' -120°54' -120°52' -120°50' -120°48' -120°46' -120°44' -120°42' -120°40' -120°38' -120°36' -120°34' -120°32' -120°30' -120°28' -120°26' -120°24'



# MOSQUITO FIRE (CA-TNF-001371) – POINT COORDINATES – 09/19/2022

FeatureCategory	Label	Latitude	Longitude	FeatureCategory	Label	Latitude	Longitude
Aviation Check Point	Canyon Check	39° 10.745' N	120° 44.437' W	Helibase	BLUE CANYON HELIBASE	39° 16.557' N	120° 42.503' W
Aviation Check Point	CONFLUENCE CHECK	38° 57.083' N	120° 49.450' W	Helibase	PLACERVILLE HELIBASE	38° 43.270' N	120° 45.120' W
Aviation Check Point	SAND CHECK	38° 52.310' N	120° 39.480' W	Helispot	900	38° 54.090' N	120° 38.211' W
Camp	EL DORADO CAMP	38° 43.413' N	120° 49.953' W	Helispot	925	38° 56.034' N	120° 45.496' W
Camp	SUGAR PINE CAMP	39° 07.454' N	120° 45.618' W	Helispot	950	39° 01.121' N	120° 49.770' W
Dip Site	BIG DIP	39° 08.396' N	120° 45.219' W	Incident Command Post		38° 45.429' N	121° 17.608' W
Dip Site	FRENCH MEADOWS DIP	39° 06.712' N	120° 26.519' W	Mobile Retardant Base	BLUE CANYON MRB	39° 16.467' N	120° 42.577' W
Dip Site	HOTCHKISS DIP	38° 54.327' N	120° 49.559' W	Mobile Retardant Base	GEORGETOWN MRB	38° 55.185' N	120° 51.837' W
Dip Site	QUINETTE DIP	38° 54.750' N	120° 41.370' W	Repeater	Bald MTN L.O.	38° 54.224' N	120° 42.294' W
Dip Site	STUMPY MEADOWS DIP	38° 54.238' N	120° 36.000' W	Repeater	Big Hill	38° 50.550' N	120° 24.433' W
Dip Site	SUGAR PINE DIP	39° 08.135' N	120° 47.575' W	Repeater	Bunker Hill	39° 02.968' N	120° 22.837' W
Drop Point	100	38° 59.170' N	120° 48.167' W	Repeater	Duncan Peak L.O.	39° 08.626' N	120° 30.546' W
Drop Point	101	38° 59.075' N	120° 46.857' W	Repeater	Georgetown Airport	38° 55.209' N	120° 51.958' W
Drop Point	102	38° 59.063' N	120° 49.002' W	Repeater	Sac Hill	38° 43.096' N	120° 47.729' W
Drop Point	104	38° 59.557' N	120° 52.957' W	Restricted Water Source		39° 02.381' N	120° 43.845' W
Drop Point	105	39° 01.172' N	120° 49.553' W	Restricted Water Source		39° 02.397' N	120° 43.771' W
Drop Point	110	39° 01.563' N	120° 48.113' W	Restricted Water Source		39° 02.422' N	120° 43.969' W
Drop Point	155	39° 02.835' N	120° 44.889' W	Restricted Water Source		39° 10.556' N	120° 15.031' W
Drop Point	160	39° 03.279' N	120° 45.799' W	Restricted Water Source		39° 09.640' N	120° 19.727' W
Drop Point	175	39° 05.398' N	120° 43.832' W	Restricted Water Source		38° 50.827' N	120° 05.937' W
Drop Point	195	39° 06.870' N	120° 43.148' W	Restricted Water Source		38° 50.854' N	120° 08.474' W
Drop Point	200	39° 08.998' N	120° 40.625' W	Restricted Water Source		38° 51.293' N	120° 08.487' W
Drop Point	204	39° 10.692' N	120° 38.460' W	Restricted Water Source		38° 50.348' N	120° 07.875' W
Drop Point	205	39° 03.132' N	120° 38.308' W	Restricted Water Source		38° 50.487' N	120° 08.434' W
Drop Point	207	39° 03.557' N	120° 34.292' W	Restricted Water Source		38° 50.834' N	120° 10.132' W
Drop Point	209	39° 03.082' N	120° 30.823' W	Restricted Water Source		38° 51.100' N	120° 09.932' W
Drop Point	210	39° 06.247' N	120° 32.200' W	Restricted Water Source		38° 50.887' N	120° 09.799' W
Drop Point	212	39° 11.087' N	120° 34.257' W	Restricted Water Source		38° 52.538' N	120° 10.158' W
Drop Point	213	39° 10.518' N	120° 31.132' W	Restricted Water Source		38° 52.199' N	120° 11.503' W
Drop Point	215	39° 09.378' N	120° 30.175' W	Restricted Water Source		38° 51.626' N	120° 06.723' W
Drop Point	300	38° 59.245' N	120° 44.500' W	Restricted Water Source		38° 51.513' N	120° 07.016' W
Drop Point	305	38° 58.340' N	120° 43.046' W	Restricted Water Source		38° 51.373' N	120° 08.148' W
Drop Point	310	38° 56.618' N	120° 43.283' W	Restricted Water Source		38° 50.701' N	120° 07.282' W
Drop Point	315	38° 55.482' N	120° 47.389' W	Staging Area		39° 15.013' N	120° 34.828' W
Drop Point	320	38° 54.827' N	120° 40.799' W	Water Source		38° 56.669' N	120° 43.167' W
Drop Point	325	38° 54.118' N	120° 36.311' W	Water Source		38° 54.072' N	120° 36.290' W
Drop Point	330	38° 54.360' N	120° 31.163' W	Water Source		39° 02.308' N	120° 47.673' W
Drop Point	336	38° 57.517' N	120° 31.915' W	Water Source		39° 18.128' N	120° 35.886' W
Drop Point	347	38° 58.862' N	120° 34.178' W	Water Source		39° 16.288' N	120° 39.505' W
Drop Point	360	39° 02.530' N	120° 30.089' W	Water Source		39° 01.449' N	120° 48.395' W
Fire Station		39° 01.435' N	120° 48.361' W	Water Source		39° 04.135' N	120° 44.700' W
				Water Source		39° 10.854' N	120° 34.991' W
				Water Source		39° 11.525' N	120° 33.970' W