

Pilot Map

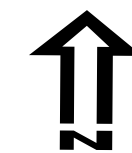
MOSQUITO
CA-TNF-001371

9/23/2022

76,781 acres on
9/22/2022 @ 1245

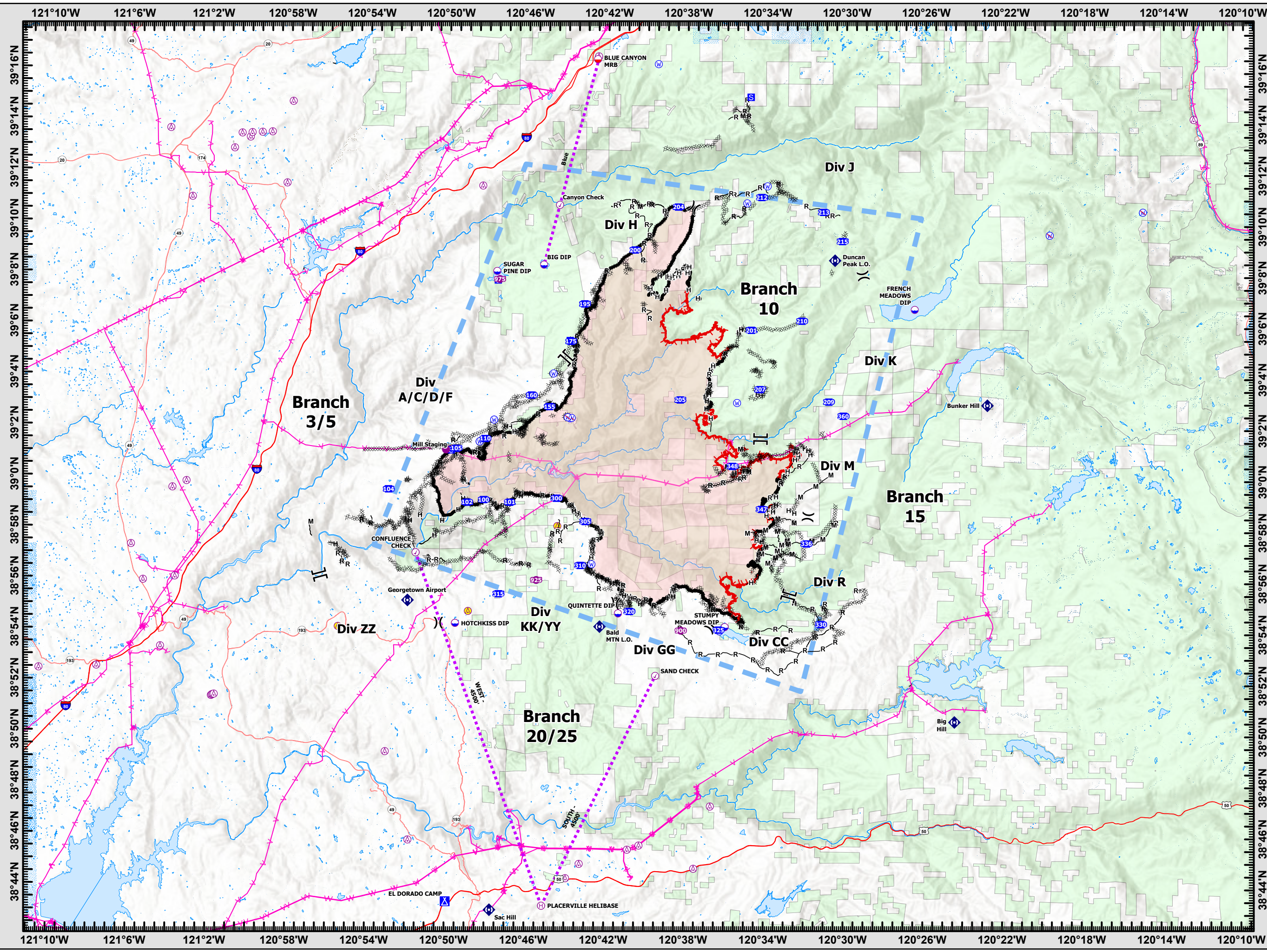


- Contained Fire Edge
- Uncontained Fire Edge
- Wildfire Daily Fire Perimeter
- Completed Dozer Line
- Completed Hand Line
- Completed Mixed Construction Line
- Completed Road as Line
- Aviation Route
- Temporary Flight Restriction
- Transmission Line
- Aviation Check Point
- Dip Site
- Mobile Retardant Base
- Helispot
- Helibase
-) Division Break
- || Branch Break
- Drop Point
- Camp
- Staging Area
- Fire Station
- Repeater
- Water Source
- Restricted Water Source
- Aviation Hazards (DOF)
- Cell Sites
- Aviation Check Point
- Dip Site
- Mobile Retardant Base
- Helispot
- Helibase
- Drop Point
- Camp
- Staging Area
- Fire Station
- Repeater
- Water Source
- Restricted Water Source



Miles
0 3 6

NAD83 UTM 10N



Pilot Table

MOSQUITO
CA-TNF-001371

9/23/2022

FC Point Type	Label	Latitude WGS84 DDM	Longitude WGS84 DDM
Aviation Check Point	CONFLUENCE CHECK	38° 57.083' N	120° 51.571' W
Aviation Check Point	SAND CHECK	38° 52.310' N	120° 39.480' W
Aviation Check Point	Canyon Check	39° 10.746' N	120° 44.438' W
Camp	EL DORADO CAMP	38° 43.413' N	120° 49.953' W
Dip Site	SUGAR PINE DIP	39° 08.135' N	120° 47.575' W
Dip Site	STUMPY MEADOWS DIP	38° 54.239' N	120° 36.000' W
Dip Site	BIG DIP	39° 08.396' N	120° 45.219' W
Dip Site	QUINTETTE DIP	38° 54.750' N	120° 41.370' W
Dip Site	FRENCH MEADOWS DIP	39° 06.713' N	120° 26.519' W
Dip Site	HOTCHKISS DIP	38° 54.328' N	120° 49.559' W
Drop Point	215	39° 09.378' N	120° 30.175' W
Drop Point	205	39° 03.132' N	120° 38.308' W
Drop Point	210	39° 06.247' N	120° 32.200' W
Drop Point	320	38° 54.827' N	120° 40.799' W
Drop Point	305	38° 58.341' N	120° 43.046' W
Drop Point	310	38° 56.618' N	120° 43.283' W
Drop Point	315	38° 55.482' N	120° 47.389' W
Drop Point	325	38° 54.118' N	120° 36.311' W
Drop Point	105	39° 01.172' N	120° 49.563' W
Drop Point	110	39° 01.563' N	120° 48.113' W
Drop Point	160	39° 03.280' N	120° 45.799' W
Drop Point	195	39° 06.870' N	120° 43.148' W
Drop Point	200	39° 08.998' N	120° 40.625' W
Drop Point	300	38° 59.245' N	120° 44.500' W
Drop Point	336	38° 57.517' N	120° 31.915' W
Drop Point	100	38° 59.170' N	120° 48.167' W
Drop Point	102	38° 59.063' N	120° 49.002' W
Drop Point	101	38° 59.075' N	120° 46.857' W
Drop Point	155	39° 02.835' N	120° 44.889' W
Drop Point	204	39° 10.692' N	120° 38.460' W
Drop Point	175	39° 05.399' N	120° 43.832' W
Drop Point	207	39° 03.557' N	120° 34.292' W
Drop Point	212	39° 11.087' N	120° 34.257' W
Drop Point	213	39° 10.518' N	120° 31.132' W
Drop Point	360	39° 02.530' N	120° 30.089' W
Drop Point	104	38° 59.558' N	120° 52.957' W
Drop Point	209	39° 03.082' N	120° 30.824' W

Pilot Table

MOSQUITO
CA-TNF-001371

9/23/2022

FC Point Type	Label	Latitude WGS84 DDM	Longitude WGS84 DDM
Drop Point	330	38° 54.360' N	120° 31.163' W
Drop Point	347	38° 58.862' N	120° 34.178' W
Drop Point	348	39° 00.540' N	120° 35.657' W
Drop Point	201	39° 05.879' N	120° 34.745' W
Fire Station		39° 01.435' N	120° 48.361' W
Helibase	PLACERVILLE HELIBASE	38° 43.270' N	120° 45.120' W
Helispot	900	38° 54.090' N	120° 38.211' W
Helispot	950	39° 01.121' N	120° 50.082' W
Helispot	925	38° 56.034' N	120° 45.496' W
Helispot	975	39° 07.820' N	120° 47.438' W
Mobile Retardant Base	BLUE CANYON MRB	39° 16.467' N	120° 42.577' W
Repeater	Big Hill	38° 50.550' N	120° 24.434' W
Repeater	Sac Hill	38° 43.096' N	120° 47.729' W
Repeater	Georgetown Airport	38° 55.209' N	120° 51.958' W
Repeater	Duncan Peak L.O.	39° 08.626' N	120° 30.546' W
Repeater	Bunker Hill	39° 02.968' N	120° 22.837' W
Repeater	Bald MTN L.O.	38° 54.224' N	120° 42.294' W
Restricted Water Source		39° 02.382' N	120° 43.845' W
Restricted Water Source		39° 02.397' N	120° 43.771' W
Restricted Water Source		39° 02.422' N	120° 43.969' W
Restricted Water Source		39° 10.556' N	120° 15.031' W
Restricted Water Source		39° 09.640' N	120° 19.727' W
Staging Area		39° 07.782' N	120° 47.521' W
Staging Area	Mill Staging	39° 01.108' N	120° 49.822' W
Staging Area		39° 15.013' N	120° 34.828' W
Staging Area		39° 05.429' N	120° 43.874' W
Water Source		38° 56.669' N	120° 42.721' W
Water Source		38° 54.073' N	120° 36.261' W
Water Source		39° 02.308' N	120° 47.673' W
Water Source		39° 18.129' N	120° 35.886' W
Water Source		39° 16.289' N	120° 39.505' W
Water Source		39° 01.449' N	120° 48.395' W
Water Source		39° 04.135' N	120° 44.700' W
Water Source		39° 10.854' N	120° 34.991' W
Water Source		39° 11.525' N	120° 33.970' W
Water Source		39° 03.027' N	120° 35.447' W