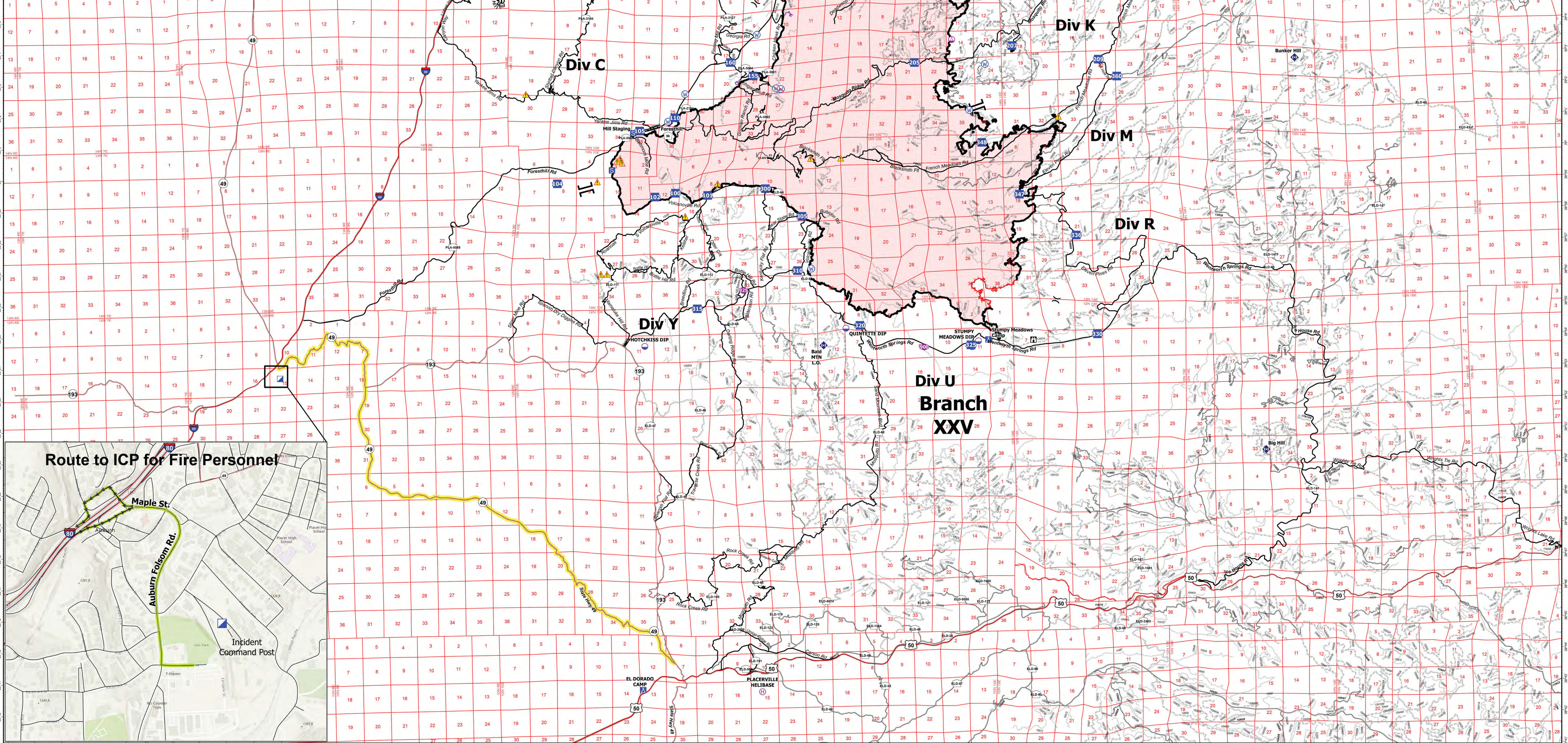


MOSQUITO Drop Point	215 39° 09.378' N	120° 30.175' W
MOSQUITO Drop Point	205 39° 03.132' N	120° 38.308' W
MOSQUITO Drop Point	210 39° 06.247' N	120° 32.200' W
MOSQUITO Drop Point	320 38° 54.827' N	120° 40.799' W
MOSQUITO Drop Point	305 38° 58.341' N	120° 43.046' W
MOSQUITO Drop Point	310 38° 56.618' N	120° 43.283' W
MOSQUITO Drop Point	315 38° 55.482' N	120° 47.389' W
MOSQUITO Drop Point	325 38° 54.118' N	120° 36.311' W
MOSQUITO Drop Point	105 39° 01.172' N	120° 49.563' W
MOSQUITO Drop Point	110 39° 01.563' N	120° 48.113' W
MOSQUITO Drop Point	160 39° 03.280' N	120° 45.799' W
MOSQUITO Drop Point	195 39° 06.870' N	120° 43.148' W
MOSQUITO Drop Point	200 39° 08.998' N	120° 40.625' W
MOSQUITO Drop Point	300 38° 59.245' N	120° 44.500' W
MOSQUITO Drop Point	336 38° 57.517' N	120° 31.915' W
MOSQUITO Drop Point	100 38° 59.170' N	120° 48.167' W
MOSQUITO Drop Point	102 38° 59.063' N	120° 49.002' W
MOSQUITO Drop Point	101 38° 59.075' N	120° 46.857' W
MOSQUITO Drop Point	155 39° 02.835' N	120° 44.889' W
MOSQUITO Drop Point	294 39° 10.692' N	120° 38.460' W
MOSQUITO Drop Point	178 39° 06.399' N	120° 43.832' W
MOSQUITO Drop Point	207 39° 03.557' N	120° 34.292' W
MOSQUITO Drop Point	212 39° 11.087' N	120° 34.252' W
MOSQUITO Drop Point	213 39° 10.518' N	120° 31.132' W
MOSQUITO Drop Point	360 39° 02.530' N	120° 30.089' W
MOSQUITO Drop Point	104 38° 59.558' N	120° 52.957' W
MOSQUITO Drop Point	209 39° 03.082' N	120° 30.824' W
MOSQUITO Drop Point	347 38° 58.862' N	120° 34.178' W
MOSQUITO Drop Point	330 38° 51.360' N	120° 31.163' W
MOSQUITO Drop Point	348 39° 00.540' N	120° 35.857' W
MOSQUITO Helispot	900 38° 54.090' N	120° 38.211' W
MOSQUITO Helispot	950 39° 01.121' N	120° 50.082' W
MOSQUITO Helispot	925 38° 56.034' N	120° 45.496' W
MOSQUITO Helispot	975 39° 07.820' N	120° 47.438' W



MOSQUITO TRANSPORTATION 10/4/2022	Dip Site	Branch Break	Lookout	Restricted Water Source
	Helispot	Incident Command Post	Fire Station	Contained
	Helibase	Drop Point	Repeater	Uncontained
	Sling Site	Camp	Hazard	Wildfire Daily Fire Perimeter
Division Break	Staging Area	Water Source		

TRANSPORTATION

MOSQUITO

CA-TNF-001371

10/4/2022

Prepared by: CIMT2 10/3/2022 18:47
 NAD83 UTM 11N 1:77,062

TRANSPORTATION
MOSQUITO
10/4/2022