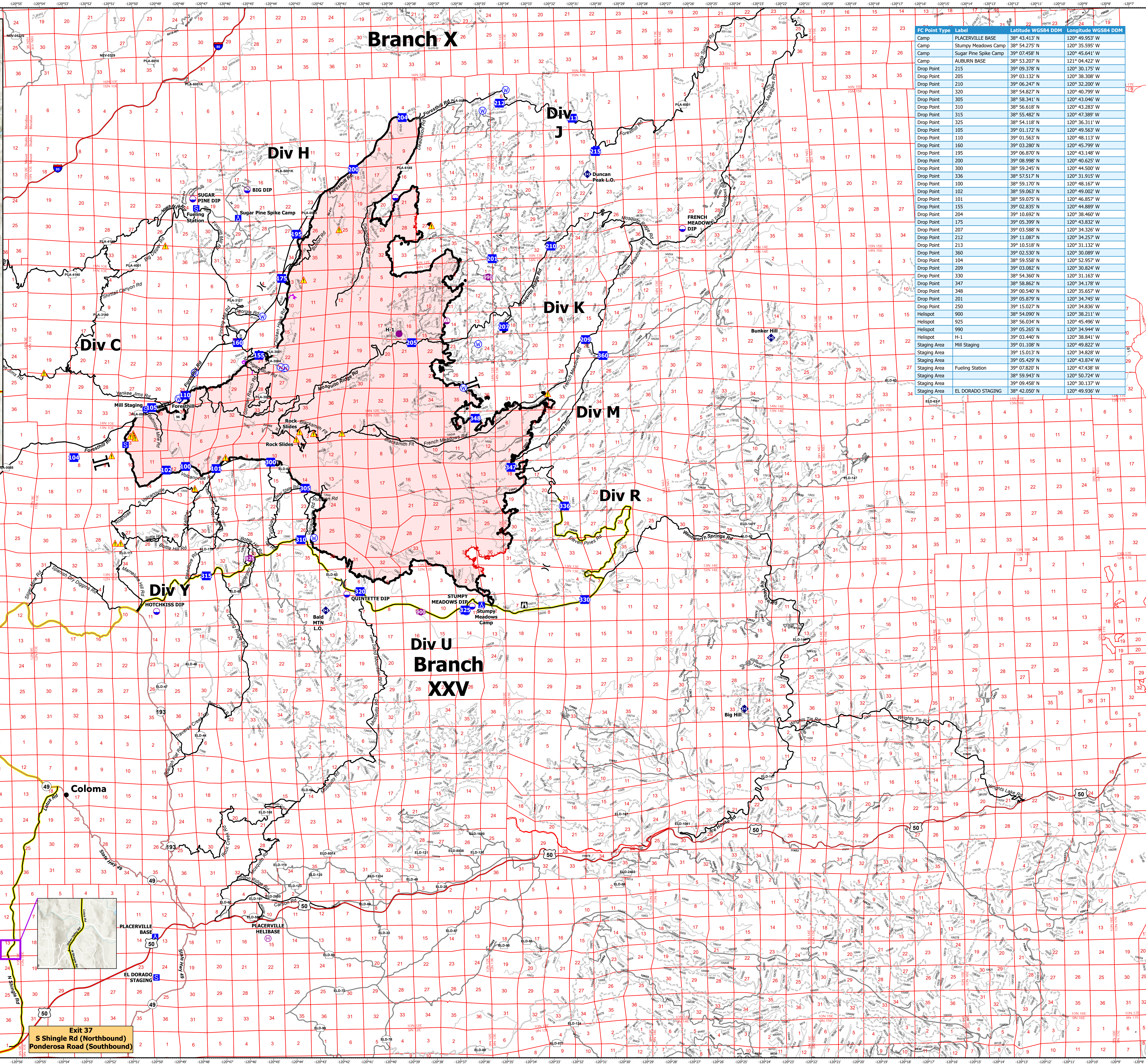
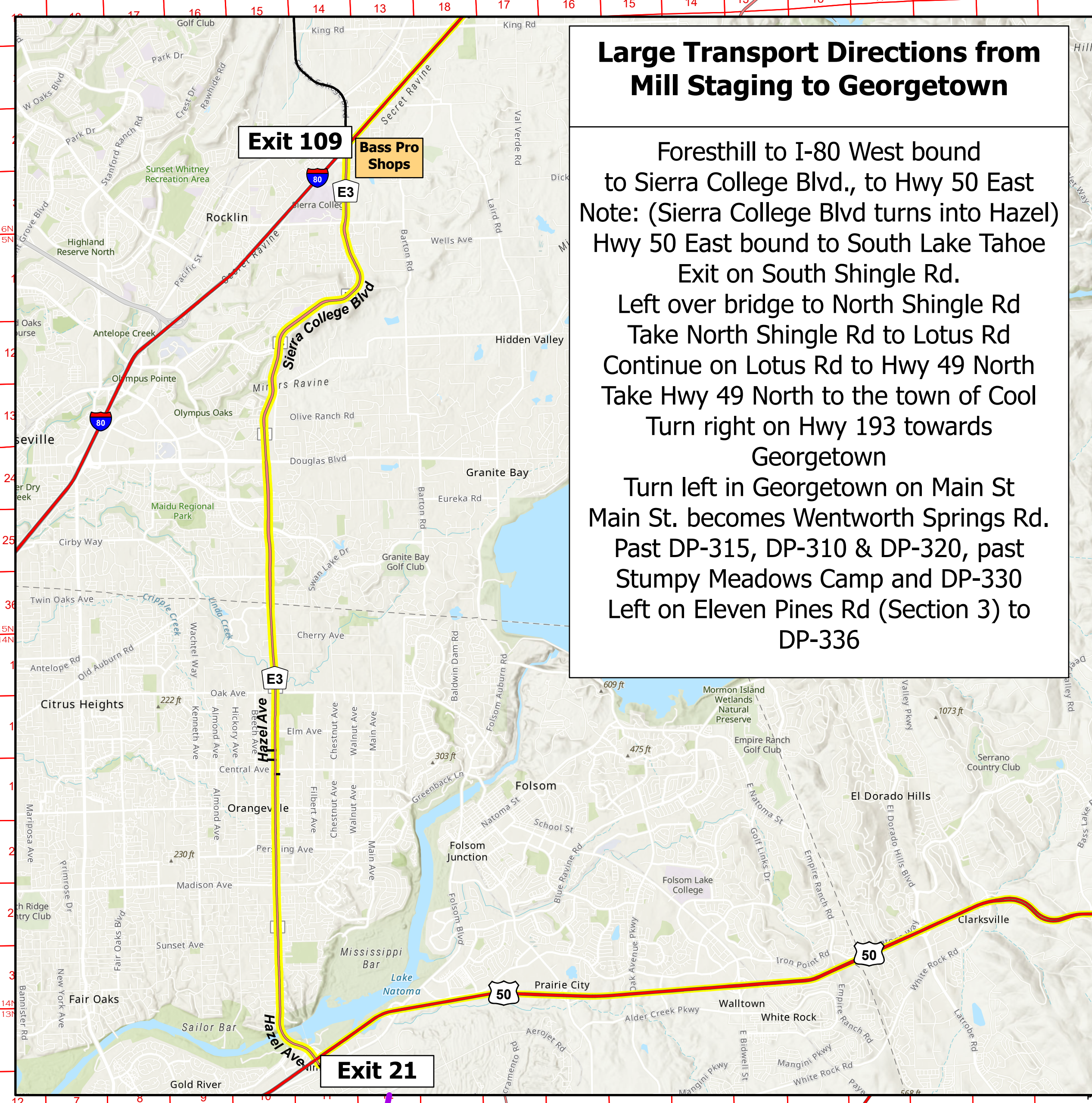


Large Transport Directions from Mill Staging to Georgetown

Foresthill to I-80 West bound to Sierra College Blvd., to Hwy 50 East
 Note: (Sierra College Blvd turns into Hazel)
 Hwy 50 East bound to South Lake Tahoe
 Exit on South Shingle Rd.
 Left over bridge to North Shingle Rd
 Take North Shingle Rd to Lotus Rd
 Continue on Lotus Rd to Hwy 49 North
 Take Hwy 49 North to the town of Cool
 Turn right on Hwy 193 towards Georgetown
 Turn left in Georgetown on Main St
 Main St. becomes Wentworth Springs Rd.
 Past DP-315, DP-310 & DP-320, past Stumpy Meadows Camp and DP-330
 Left on Eleven Pines Rd (Section 3) to DP-336





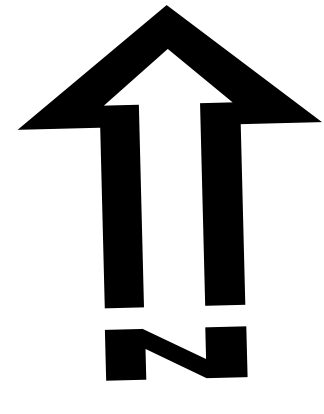

FC Point Type	Label	Latitude WGS84 DDM	Longitude WGS84 DDM
Camp	PLACERVILLE BASE	38° 43.413' N	120° 49.823' W
Camp	Stumpy Meadows Camp	39° 54.275' N	120° 35.595' W
Camp	Sugar Pine Spike Camp	39° 07.458' N	120° 45.441' W
Camp	ALBURN BASE	38° 53.207' N	121° 04.422' W
Drop Point	215	39° 09.378' N	120° 30.175' W
Drop Point	205	39° 03.132' N	120° 38.388' W
Drop Point	210	39° 06.247' N	120° 32.260' W
Drop Point	320	38° 54.827' N	120° 40.799' W
Drop Point	305	38° 58.341' N	120° 43.046' W
Drop Point	310	38° 56.618' N	120° 43.283' W
Drop Point	315	38° 55.482' N	120° 47.389' W
Drop Point	325	38° 54.118' N	120° 36.311' W
Drop Point	210	39° 01.172' N	120° 45.322' W
Drop Point	110	39° 01.565' N	120° 48.113' W
Drop Point	160	39° 03.280' N	120° 45.799' W
Drop Point	195	39° 06.870' N	120° 43.148' W
Drop Point	200	39° 08.998' N	120° 40.625' W
Drop Point	300	38° 59.245' N	120° 44.500' W
Drop Point	336	38° 57.517' N	120° 33.821' W
Drop Point	100	38° 59.170' N	120° 48.167' W
Drop Point	102	38° 59.063' N	120° 49.002' W
Drop Point	101	38° 59.075' N	120° 46.857' W
Drop Point	155	39° 02.835' N	120° 44.889' W
Drop Point	204	39° 10.692' N	120° 38.460' W
Drop Point	175	39° 05.399' N	120° 43.822' W
Drop Point	207	39° 03.588' N	120° 34.326' W
Drop Point	212	39° 11.087' N	120° 34.257' W
Drop Point	213	39° 10.518' N	120° 31.132' W
Drop Point	360	39° 02.530' N	120° 30.089' W
Drop Point	104	38° 59.558' N	120° 52.957' W
Drop Point	209	39° 04.062' N	120° 38.024' W
Drop Point	330	38° 54.360' N	120° 31.163' W
Drop Point	347	38° 58.862' N	120° 34.178' W
Drop Point	348	39° 00.540' N	120° 35.657' W
Drop Point	201	39° 05.879' N	120° 34.745' W
Drop Point	250	39° 15.027' N	120° 34.836' W
Helispot	900	38° 54.090' N	120° 38.211' W
Helispot	925	38° 56.034' N	120° 45.496' W
Helispot	990	39° 05.265' N	120° 34.944' W
Helispot	H-1	39° 03.440' N	120° 38.841' W
Staging Area	Mill Staging	39° 01.108' N	120° 49.822' W
Staging Area		39° 15.013' N	120° 34.828' W
Staging Area		39° 05.429' N	120° 43.814' W
Staging Area	Fueling Station	39° 07.820' N	120° 47.438' W
Staging Area		38° 59.943' N	120° 50.724' W
Staging Area		39° 09.458' N	120° 30.137' W
Staging Area	EL DORADO STAGING	38° 42.050' N	120° 49.936' W

TRANSPORTATION MOSQUITO 10/11/2022

- CommunityName
- Dip Site
- Helispot
- ⊕ Helibase
- Sling Site
- ⌋ Division Break
- ⌋ Branch Break
- ⌋ Incident Command Post
- ⌋ Drop Point
- ⌋ Camp
- ⌋ Staging Area
- Ⓜ Lookout
- Ⓜ Fire Station
- Ⓜ Repeater
- ⚠ Hazard
- Ⓜ Water Source
- Ⓜ Restricted Water Source
- Ⓜ Contained
- Ⓜ Uncontained
- Ⓜ Wildfire Daily Fire Perimeter
- Secondary Highway
- Paved Roads
- Highlights2_2022
- Highlights_20221

TRANSPORTATION MOSQUITO

CA-TNF-001371
10/11/2022

0 1 2 3 Miles

Prepared by: CIMT12 10/10/2022 21:30
NAD83 UTM 11N 1:84,000

TRANSPORTATION MOSQUITO 10/11/2022