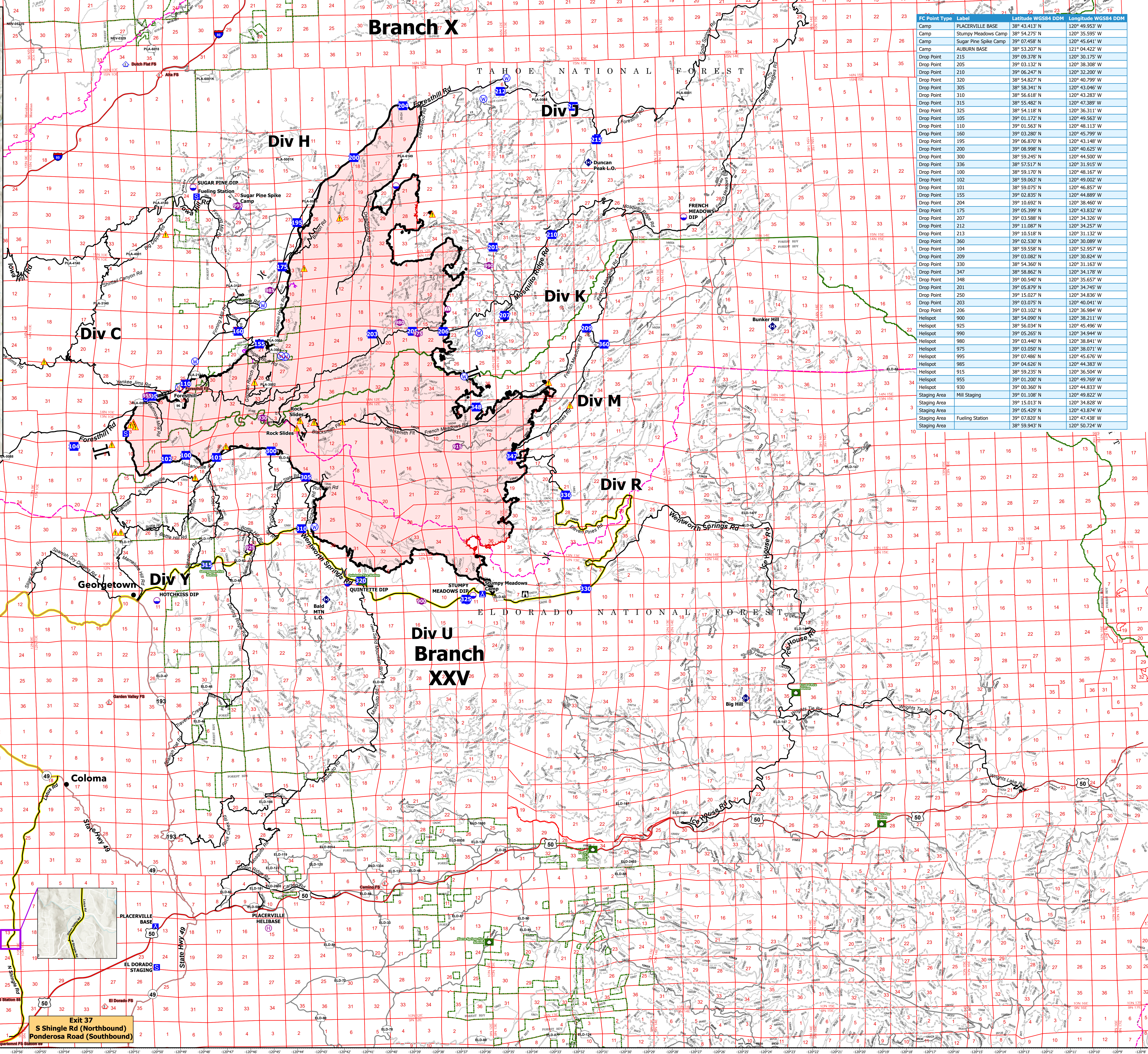
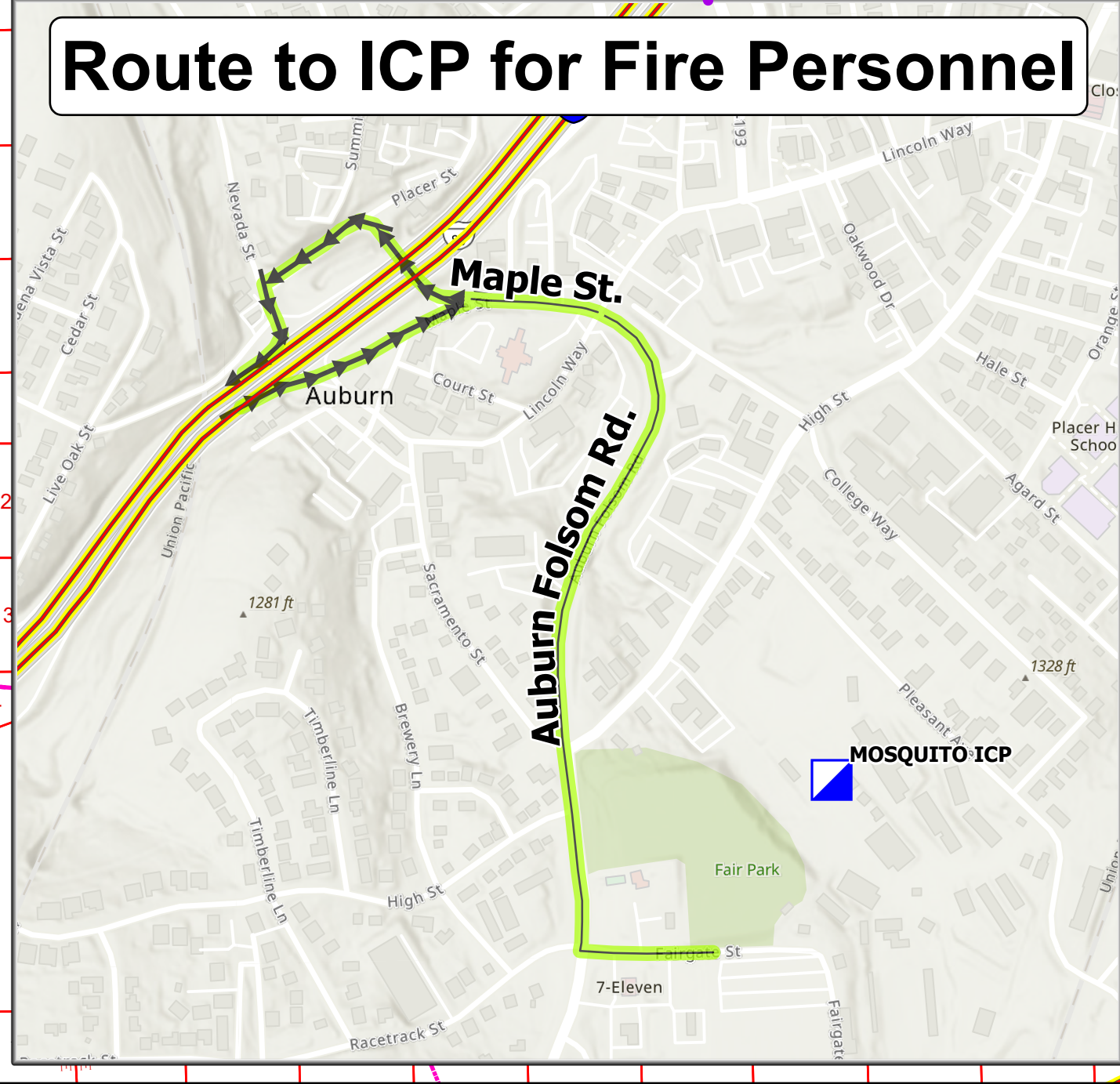
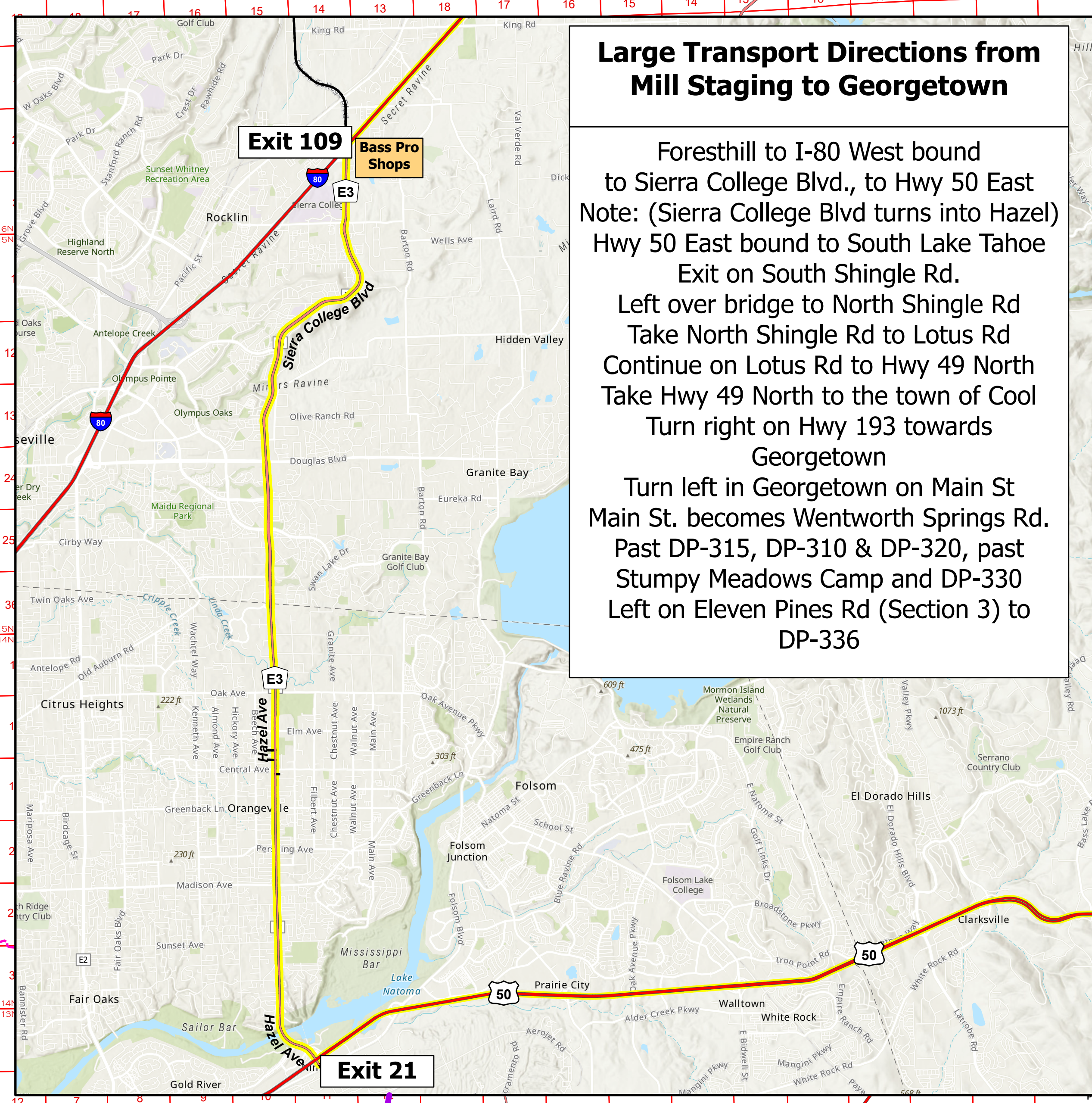


**Large Transport Directions from Mill Staging to Georgetown**

Foresthill to I-80 West bound to Sierra College Blvd., to Hwy 50 East  
 Note: (Sierra College Blvd turns into Hazel)  
 Hwy 50 East bound to South Lake Tahoe  
 Exit on South Shingle Rd.  
 Left over bridge to North Shingle Rd  
 Take North Shingle Rd to Lotus Rd  
 Continue on Lotus Rd to Hwy 49 North  
 Take Hwy 49 North to the town of Cool  
 Turn right on Hwy 193 towards Georgetown

Georgetown  
 Turn left in Georgetown on Main St  
 Main St. becomes Wentworth Springs Rd.  
 Past DP-315, DP-310 & DP-320, past Stumpy Meadows Camp and DP-330  
 Left on Eleven Pines Rd (Section 3) to DP-336



FC Point Type	Label	Latitude WGS84 DDM	Longitude WGS84 DDM
Camp	PLACERVILLE BASE	38° 43.413' N	120° 38.823' W
Camp	Stumpy Meadows Camp	39° 54.275' N	120° 35.595' W
Camp	Sugar Pine Spike Camp	39° 07.458' N	120° 45.641' W
Camp	ALBURN BASE	38° 53.207' N	121° 04.422' W
Drop Point	215	39° 09.378' N	120° 30.175' W
Drop Point	205	39° 03.132' N	120° 38.388' W
Drop Point	210	39° 06.247' N	120° 32.200' W
Drop Point	320	38° 54.827' N	120° 40.799' W
Drop Point	305	38° 58.341' N	120° 43.046' W
Drop Point	310	38° 56.618' N	120° 43.283' W
Drop Point	315	38° 55.482' N	120° 47.389' W
Drop Point	325	38° 54.118' N	120° 36.311' W
Drop Point	210	39° 01.172' N	120° 31.921' W
Drop Point	110	39° 01.563' N	120° 48.113' W
Drop Point	160	39° 03.280' N	120° 45.799' W
Drop Point	195	39° 06.870' N	120° 43.148' W
Drop Point	200	39° 08.998' N	120° 40.625' W
Drop Point	300	38° 59.245' N	120° 44.500' W
Drop Point	336	38° 57.517' N	120° 31.517' W
Drop Point	100	38° 59.170' N	120° 48.167' W
Drop Point	102	38° 59.063' N	120° 49.002' W
Drop Point	101	38° 59.075' N	120° 46.857' W
Drop Point	155	39° 02.835' N	120° 44.889' W
Drop Point	204	39° 10.692' N	120° 38.460' W
Drop Point	175	39° 05.399' N	120° 43.832' W
Drop Point	207	39° 03.588' N	120° 34.326' W
Drop Point	212	39° 11.087' N	120° 34.257' W
Drop Point	213	39° 11.518' N	120° 31.132' W
Drop Point	360	39° 02.530' N	120° 30.089' W
Drop Point	104	38° 59.558' N	120° 52.957' W
Drop Point	209	39° 03.062' N	120° 40.041' W
Drop Point	330	38° 54.360' N	120° 31.163' W
Drop Point	347	38° 58.862' N	120° 34.178' W
Drop Point	348	39° 00.540' N	120° 35.657' W
Drop Point	201	39° 05.879' N	120° 34.745' W
Drop Point	250	39° 15.027' N	120° 34.856' W
Drop Point	203	39° 03.075' N	120° 40.041' W
Drop Point	206	39° 03.102' N	120° 36.984' W
Helispot	900	38° 54.090' N	120° 38.211' W
Helispot	925	38° 56.034' N	120° 45.496' W
Helispot	990	39° 05.265' N	120° 34.944' W
Helispot	980	39° 03.440' N	120° 38.841' W
Helispot	975	39° 03.050' N	120° 38.071' W
Helispot	995	39° 07.486' N	120° 45.676' W
Helispot	985	39° 04.626' N	120° 44.383' W
Helispot	915	38° 59.235' N	120° 36.504' W
Helispot	955	39° 01.200' N	120° 49.769' W
Helispot	930	39° 00.360' N	120° 44.853' W
Staging Area	MILL Staging	39° 01.108' N	120° 49.822' W
Staging Area	MILL Staging	39° 15.013' N	120° 34.828' W
Staging Area	MILL Staging	39° 05.429' N	120° 43.874' W
Staging Area	Fueling Station	39° 07.820' N	120° 47.438' W
Staging Area	Fueling Station	38° 59.943' N	120° 50.724' W

**TRANSPORTATION MOSQUITO 10/15/2022**

Eldorado NF Fire Stations	Dip Site	Incident Command Post	Repeater	Wildfire Daily Fire Perimeter
Tahoe NF Fire Stations	Helibase	Drop Point	Hazard	Secondary Highway
Fire Station - Schedule A	Sling Site	Camp	Water Source	Paved Roads
Fire Station - Schedule B	Division Break	Staging Area	Restricted Water Source	Administrative FS Boundary
	Branch Break	Lookout	Contained	County Boundary
		Fire Station	Uncontained	

**TRANSPORTATION MOSQUITO 10/15/2022**

**TRANSPORTATION MOSQUITO**  
 CA-TNF-001371  
 10/15/2022

Scale: 0 1 2 3 Miles

Prepared by: CIMT12 10/14/2022 19:41  
 NAD83 UTM 11N 1:84,000