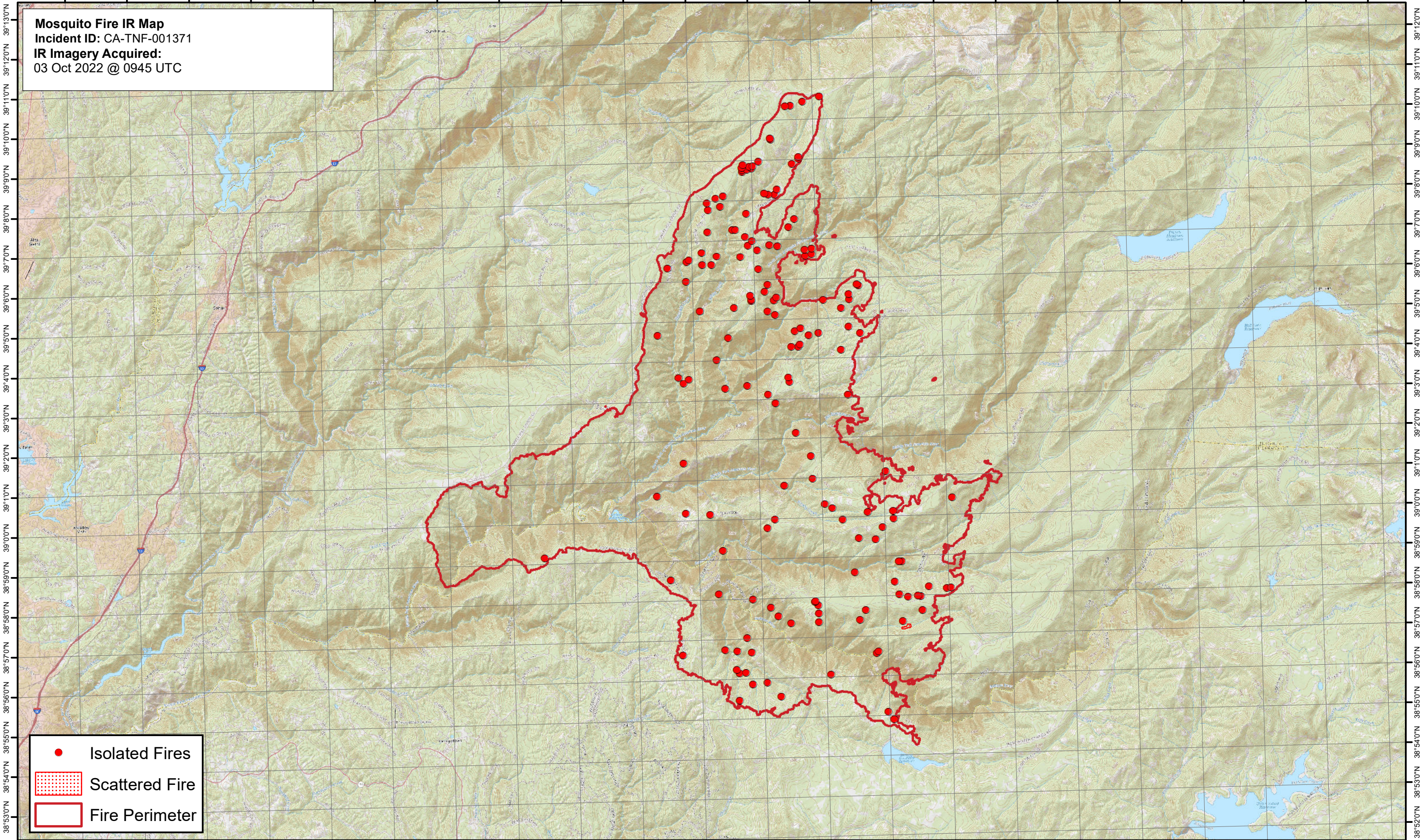




121°20'W 121°00'W 120°58'W 120°56'W 120°54'W 120°52'W 120°50'W 120°48'W 120°46'W 120°44'W 120°42'W 120°40'W 120°38'W 120°36'W 120°34'W 120°32'W 120°30'W 120°28'W 120°26'W 120°24'W 120°22'W 120°20'W

Mosquito Fire IR Map
Incident ID: CA-TNF-001371
IR Imagery Acquired:
03 Oct 2022 @ 0945 UTC



- Isolated Fires
- Scattered Fire
- Fire Perimeter

121°40'W 121°20'W 121°00'W 120°58'W 120°56'W 120°54'W 120°52'W 120°50'W 120°48'W 120°46'W 120°44'W 120°42'W 120°40'W 120°38'W 120°36'W 120°34'W 120°32'W 120°30'W 120°28'W 120°26'W 120°24'W 120°22'W 120°20'W

0 0.5 1 2 3 4 Miles

Map date: 10/3/2022

Map created with USGS 24K Quads; Projection: WGS 1984 UTM Zone 10N