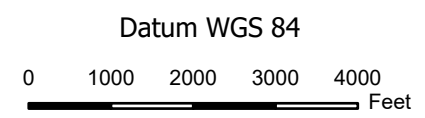


Div H

- 001 Ash Pile
Lat 39° 8.824' N
Lon 120° 40.943' W
Div H
- 002 Smoker
Lat 39° 8.400' N
Lon 120° 41.522' W
Div H
- 003 Smoker
Lat 39° 8.203' N
Lon 120° 41.845' W
Div H
- 004 Smoker
Lat 39° 7.987' N
Lon 120° 42.021' W
Div H
- 005 Scattered Heat
Lat 39° 7.576' N
Lon 120° 42.322' W
Div H



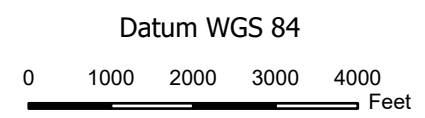
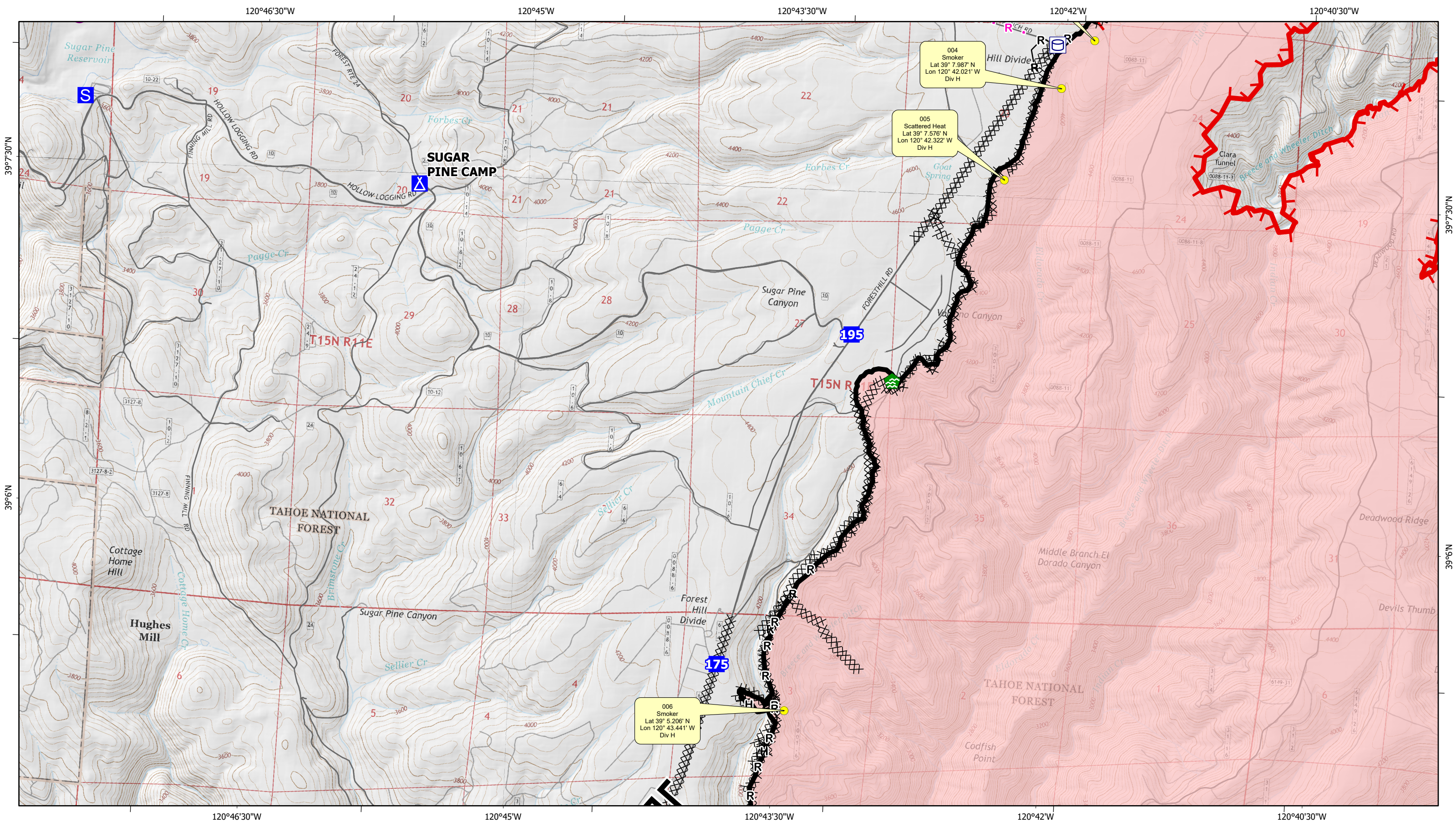
Mosquito Fire

CA-TNF-001371

- Active Fire - Uncontrolled Spot Fire or Fire Edge
- Creeping Fire - 12" Flame Lengths or Less
- Smoker Brush or Tree
- Hot Spot - Significant Priority
- Hot Spot - Moderate Priority

Div H - Upper
Infrared Data Captured on 20220917 @ 1730





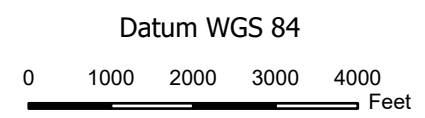
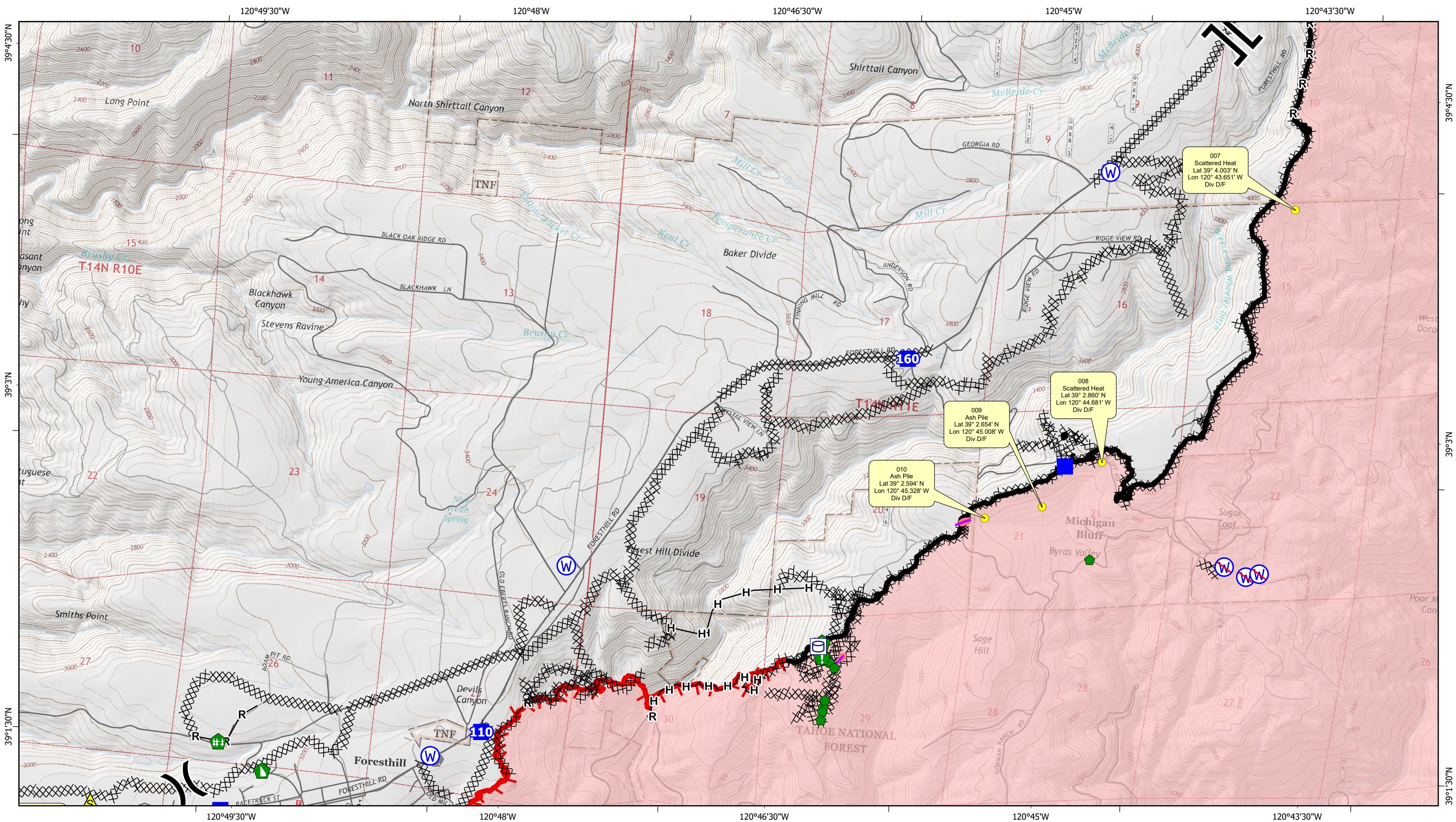
Mosquito Fire

CA-TNF-001371

- Active Fire - Uncontrolled Spot Fire or Fire Edge
- Creeping Fire - 12" Flame Lengths or Less
- Smoker Brush or Tree
- Hot Spot - Significant Priority
- Hot Spot - Moderate Priority

Div H - Lower
 Infrared Data Captured on 20220917 @ 1730





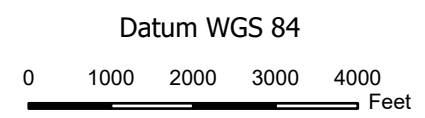
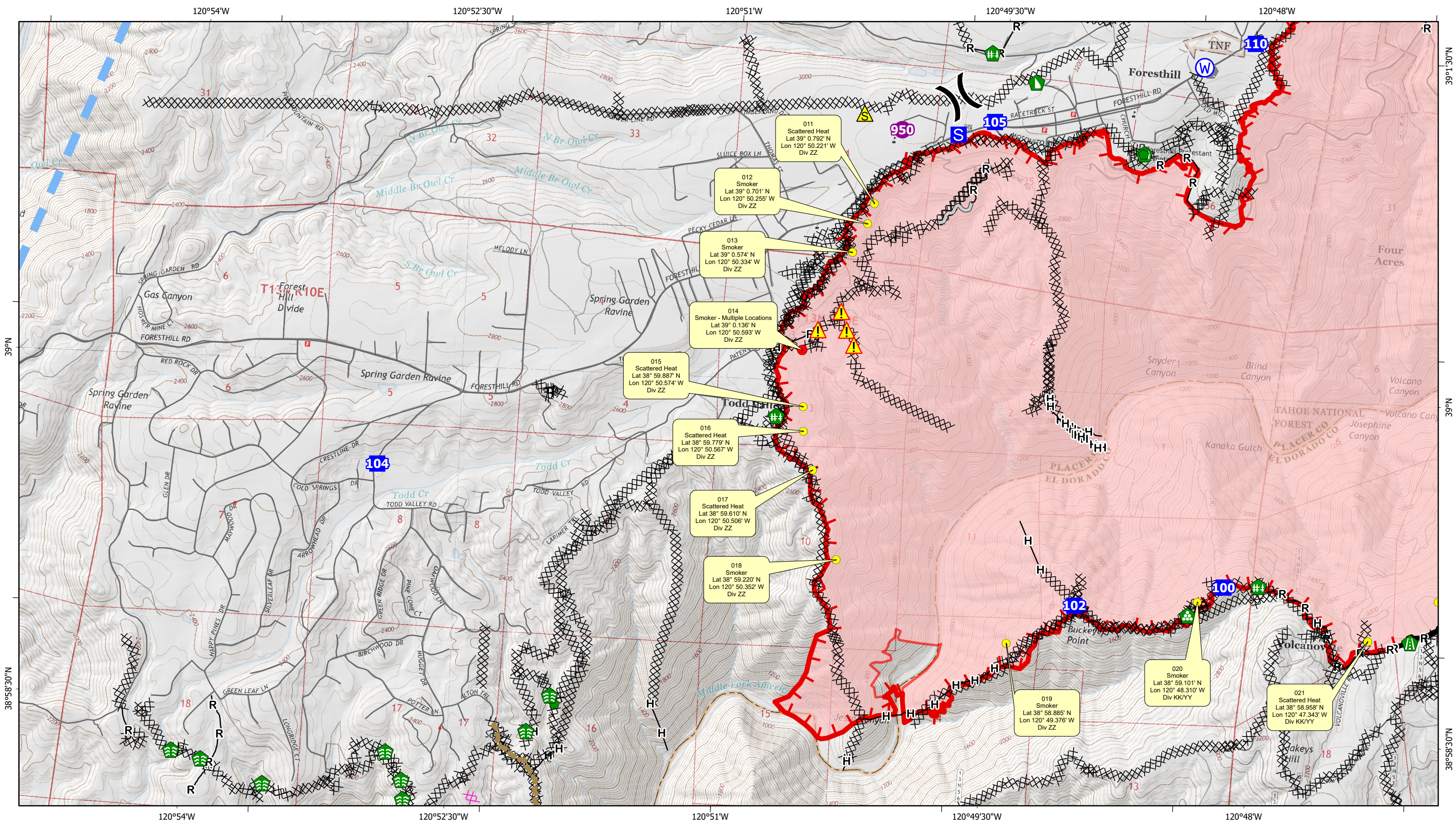
Mosquito Fire

CA-TNF-001371

- Active Fire - Uncontrolled Spot Fire or Fire Edge
- Creeping Fire - 12" Flame Lengths or Less
- Smoker Brush or Tree
- Hot Spot - Significant Priority
- Hot Spot - Moderate Priority

Div D/F
 Infrared Data Captured on 20220917 @ 1900



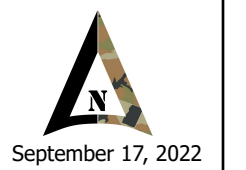


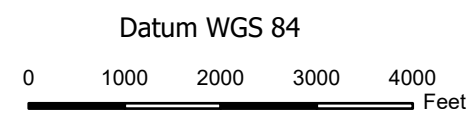
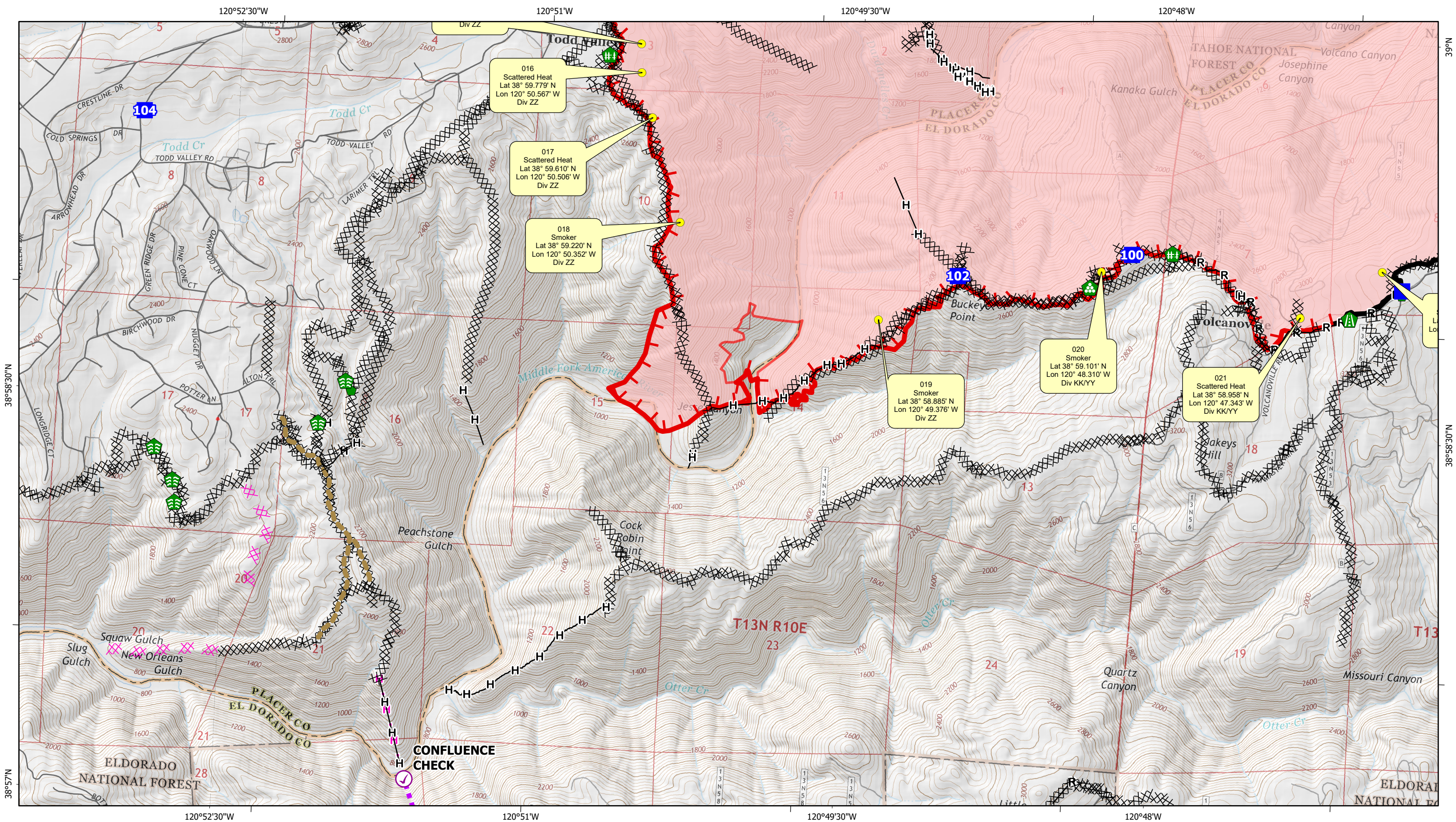
Mosquito Fire

CA-TNF-001371

- Active Fire - Uncontrolled Spot Fire or Fire Edge
- Creeping Fire - 12" Flame Lengths or Less
- Smoker Brush or Tree
- Hot Spot - Significant Priority
- Hot Spot - Moderate Priority

Div A/C
Infrared Data Captured on 20220917 @ 1900





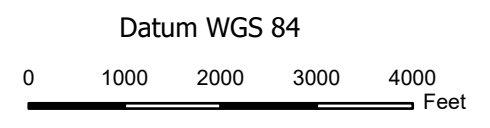
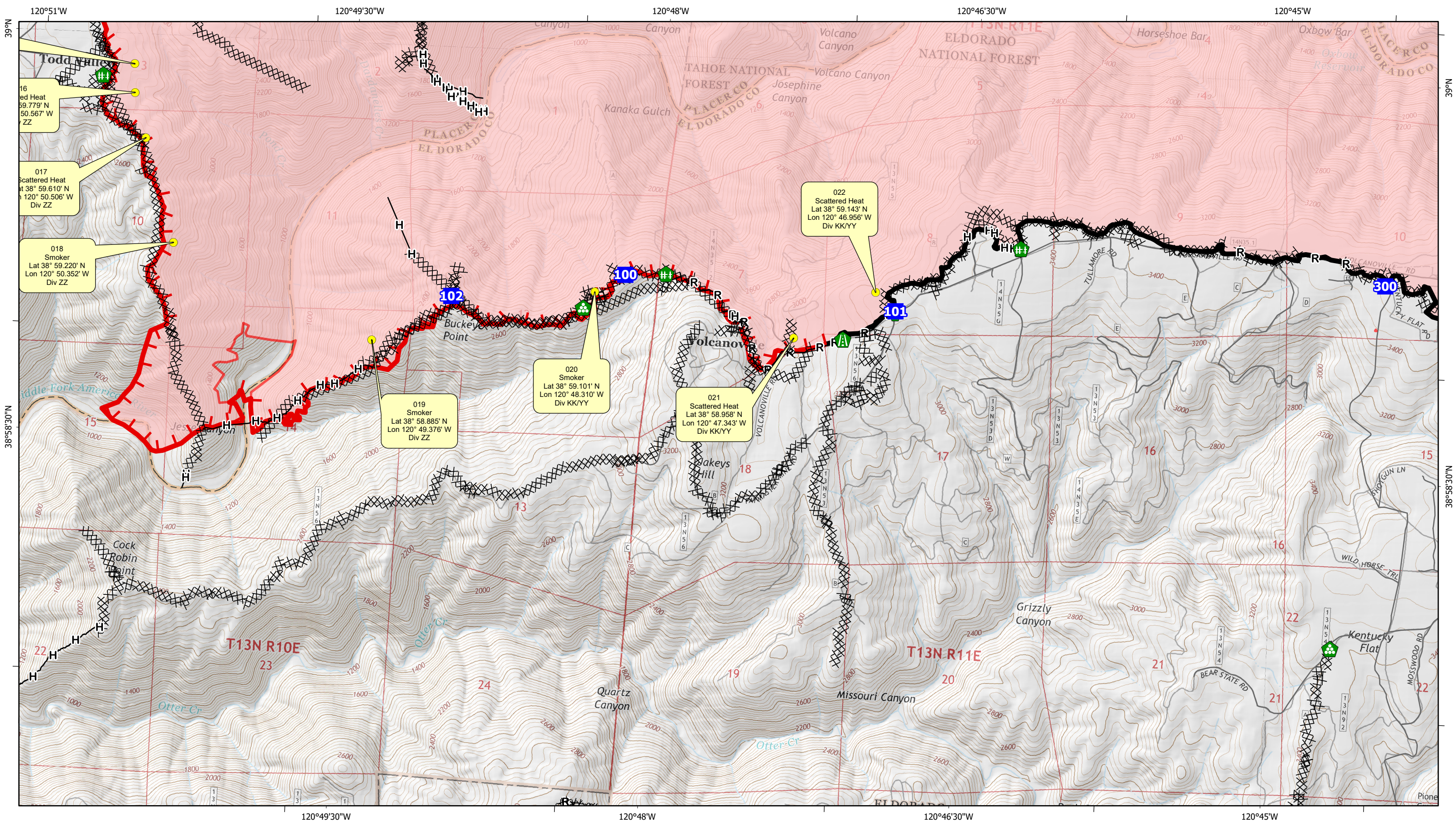
Mosquito Fire

CA-TNF-001371

- Active Fire - Uncontrolled Spot Fire or Fire Edge
- Creeping Fire - 12" Flame Lengths or Less
- Smoker Brush or Tree
- Hot Spot - Significant Priority
- Hot Spot - Moderate Priority

Div ZZ
 Infrared Data Captured on 20220917 @ 1900





Mosquito Fire

CA-TNF-001371

- Active Fire - Uncontrolled Spot Fire or Fire Edge
- Creeping Fire - 12" Flame Lengths or Less
- Smoker Brush or Tree
- Hot Spot - Significant Priority
- Hot Spot - Moderate Priority

Div KK/YY
 Infrared Data Captured on 20220917 @ 1900





INFRARED MAP LEGEND

- Active Fire - Uncontrolled Spot Fire or Fire Edge
- Creeping Fire - 12" Flame Length or Less
- Smoker - Brush or Tree
- Hot Spot - Significant Priority
- Hot Spot - Moderate Priority

GPS Coordinates are in Degrees & Decimal Minutes (DD MM.mmmm')

Datum is WGS 84 (unless otherwise noted on map) Ex. N 37° 44.575'
W -119° 32.101'

Date and Time is when the intelligence was gathered

Heat Sources are normally acquired within a 400 foot strip, 200 feet inside and 200 feet outside the fire line or fire front (wider strips are flown as necessary and are labeled on infrared map).

LIMITS TO INFRARED AND GPS INFORMATION

Under the best conditions heat sources less than 4 to 6 inches in diameter are inconsistent.

Very Small Heat sources under heavy canopy or in large rock piles are difficult to verify.

Accuracy of GPS coordinates is within 50 feet, 90% of the time.

Note: Ash Field is a large area with multiple Ash Piles

Infrared Labeling Details:

