

120°37'30"W

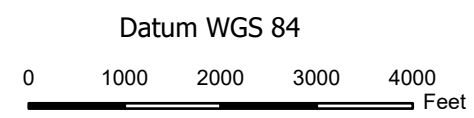
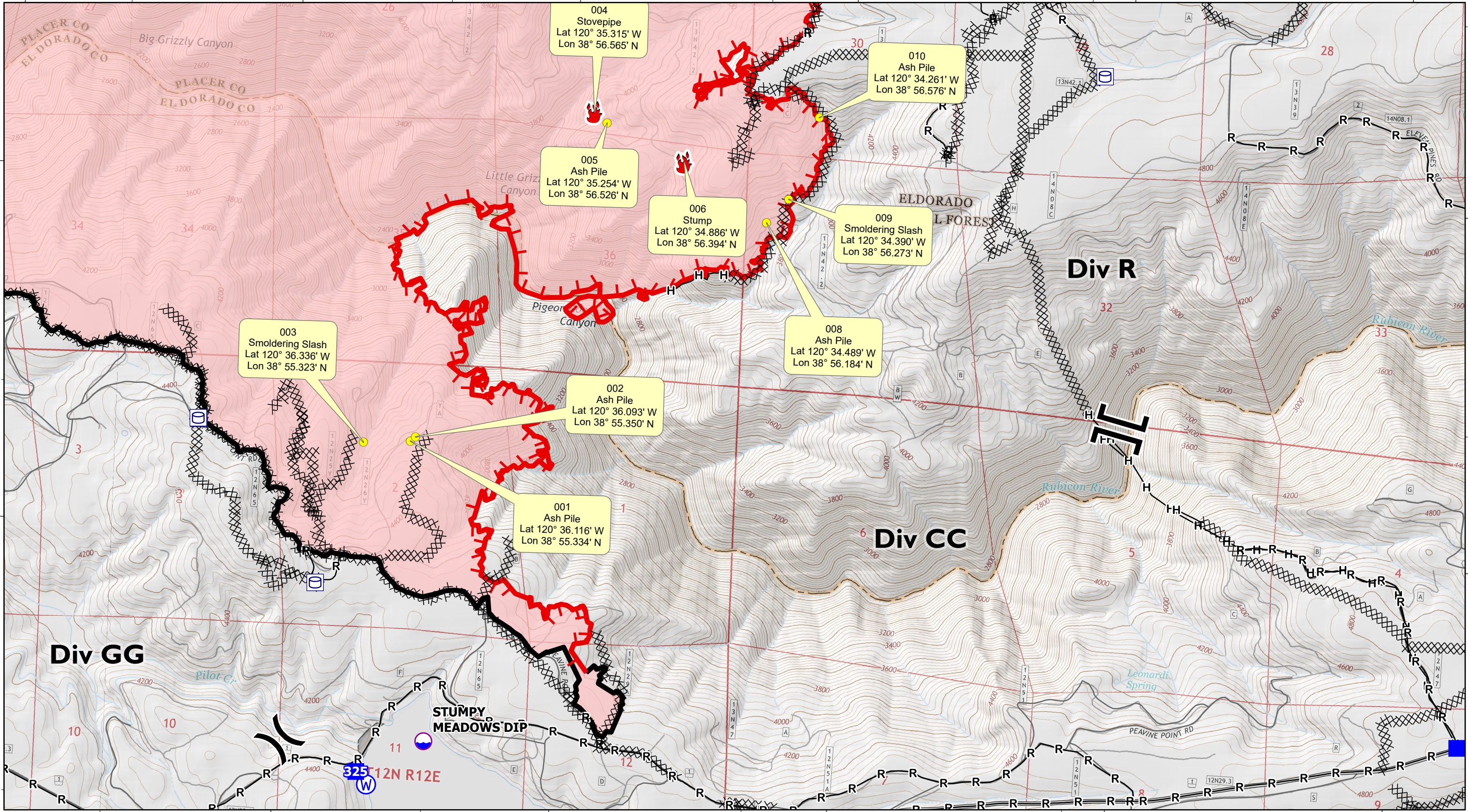
120°36"W

120°34'30"W

120°33"W

120°31'30"W

38°55'30"N  
38°55'30"N  
38°55'30"N



# Mosquito Fire

CA-TNF-001371

- Active Fire - Uncontrolled Spot Fire or Fire Edge
- Creeping Fire - 12" Flame Lengths or Less
- Smoker Brush or Tree
- Hot Spot - Significant Priority
- Hot Spot - Moderate Priority

Div CC  
Infrared Data Captured on 20220923 @ 0930

