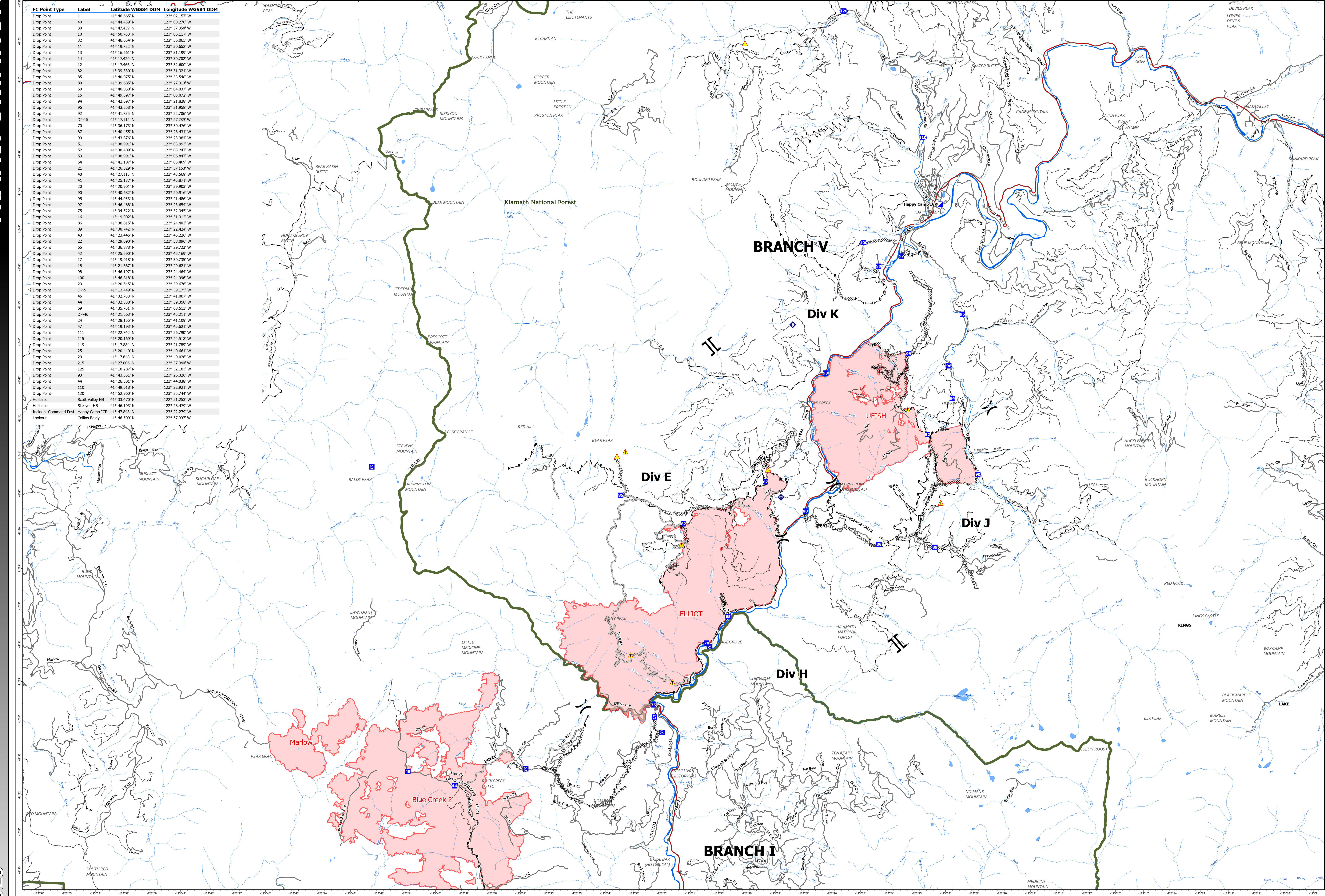


| FC Point Type         | Label           | Latitude WGS84 DDM | Longitude WGS84 DDM |
|-----------------------|-----------------|--------------------|---------------------|
| Drop Point            | 1               | 41° 46.665' N      | 123° 02.157' W      |
| Drop Point            | 80              | 41° 44.459' N      | 123° 00.270' W      |
| Drop Point            | 30              | 41° 47.439' N      | 122° 57.058' W      |
| Drop Point            | 10              | 41° 50.700' N      | 123° 06.117' W      |
| Drop Point            | 32              | 41° 46.654' N      | 122° 56.065' W      |
| Drop Point            | 11              | 41° 19.222' N      | 123° 30.652' W      |
| Drop Point            | 13              | 41° 16.661' N      | 123° 31.199' W      |
| Drop Point            | 14              | 41° 17.420' N      | 123° 30.702' W      |
| Drop Point            | 12              | 41° 17.466' N      | 123° 32.600' W      |
| Drop Point            | 82              | 41° 39.330' N      | 123° 31.321' W      |
| Drop Point            | 65              | 41° 40.075' N      | 123° 33.548' W      |
| Drop Point            | 80              | 41° 39.685' N      | 123° 27.013' W      |
| Drop Point            | 50              | 41° 40.050' N      | 123° 04.037' W      |
| Drop Point            | 15              | 41° 49.597' N      | 123° 03.872' W      |
| Drop Point            | 94              | 41° 42.697' N      | 123° 21.828' W      |
| Drop Point            | 96              | 41° 43.536' N      | 123° 21.968' W      |
| Drop Point            | 92              | 41° 41.735' N      | 123° 22.706' W      |
| Drop Point            | DP-15           | 41° 17.112' N      | 123° 27.789' W      |
| Drop Point            | 70              | 41° 36.173' N      | 123° 30.476' W      |
| Drop Point            | 87              | 41° 40.455' N      | 123° 28.431' W      |
| Drop Point            | 99              | 41° 43.376' N      | 123° 23.384' W      |
| Drop Point            | 51              | 41° 38.991' N      | 123° 03.993' W      |
| Drop Point            | 52              | 41° 38.409' N      | 123° 03.247' W      |
| Drop Point            | 53              | 41° 38.991' N      | 123° 06.847' W      |
| Drop Point            | 54              | 41° 41.107' N      | 123° 05.469' W      |
| Drop Point            | 21              | 41° 43.536' N      | 123° 21.968' W      |
| Drop Point            | 40              | 41° 27.115' N      | 123° 43.569' W      |
| Drop Point            | 41              | 41° 25.137' N      | 123° 45.871' W      |
| Drop Point            | 20              | 41° 20.901' N      | 123° 39.903' W      |
| Drop Point            | 90              | 41° 40.682' N      | 123° 20.916' W      |
| Drop Point            | 95              | 41° 44.320' N      | 123° 22.384' W      |
| Drop Point            | 97              | 41° 46.468' N      | 123° 23.654' W      |
| Drop Point            | 75              | 41° 34.522' N      | 123° 32.345' W      |
| Drop Point            | 16              | 41° 19.002' N      | 123° 31.312' W      |
| Drop Point            | 86              | 41° 38.515' N      | 123° 24.403' W      |
| Drop Point            | 89              | 41° 38.542' N      | 123° 23.626' W      |
| Drop Point            | 43              | 41° 23.445' N      | 123° 45.226' W      |
| Drop Point            | 22              | 41° 29.090' N      | 123° 38.096' W      |
| Drop Point            | 65              | 41° 36.878' N      | 123° 29.723' W      |
| Drop Point            | 42              | 41° 25.590' N      | 123° 45.189' W      |
| Drop Point            | 17              | 41° 19.018' N      | 123° 39.175' W      |
| Drop Point            | 18              | 41° 21.667' N      | 123° 29.621' W      |
| Drop Point            | 98              | 41° 46.197' N      | 123° 24.464' W      |
| Drop Point            | 100             | 41° 46.818' N      | 123° 24.996' W      |
| Drop Point            | 23              | 41° 20.545' N      | 123° 39.676' W      |
| Drop Point            | DP-5            | 41° 13.449' N      | 123° 39.175' W      |
| Drop Point            | 45              | 41° 32.708' N      | 123° 41.007' W      |
| Drop Point            | 44              | 41° 32.338' N      | 123° 39.358' W      |
| Drop Point            | 69              | 41° 35.701' N      | 123° 08.513' W      |
| Drop Point            | DP-46           | 41° 21.563' N      | 123° 45.119' W      |
| Drop Point            | 24              | 41° 28.153' N      | 123° 41.109' W      |
| Drop Point            | 47              | 41° 19.193' N      | 123° 45.621' W      |
| Drop Point            | 111             | 41° 22.742' N      | 123° 26.790' W      |
| Drop Point            | 115             | 41° 20.169' N      | 123° 24.518' W      |
| Drop Point            | 119             | 41° 17.854' N      | 123° 21.789' W      |
| Drop Point            | 25              | 41° 20.440' N      | 123° 40.661' W      |
| Drop Point            | 29              | 41° 17.648' N      | 123° 40.026' W      |
| Drop Point            | 215             | 41° 27.806' N      | 123° 37.040' W      |
| Drop Point            | 125             | 41° 18.287' N      | 123° 32.183' W      |
| Drop Point            | 93              | 41° 43.551' N      | 123° 26.326' W      |
| Drop Point            | 44              | 41° 26.501' N      | 123° 44.038' W      |
| Drop Point            | 110             | 41° 49.618' N      | 123° 22.921' W      |
| Drop Point            | 120             | 41° 52.960' N      | 123° 25.744' W      |
| Helibase              | Scott Valley HB | 41° 33.470' N      | 122° 51.253' W      |
| Helibase              | Siskiyou HB     | 41° 46.103' N      | 122° 28.479' W      |
| Incident Command Post | Happy Camp ICP  | 41° 47.848' N      | 123° 22.279' W      |
| Lookout               | Collins Baldy   | 41° 46.509' N      | 122° 57.097' W      |



|   |                       |   |                       |   |                               |
|---|-----------------------|---|-----------------------|---|-------------------------------|
| X | Division Break        | □ | Lookout               | R | Completed Road as Line        |
|   | Branch Break          | ◆ | Internet Access       | — | Access or Improved Road       |
| ■ | Incident Command Post | ▲ | Hazard                | ▭ | Wildfire Daily Fire Perimeter |
| ● | Drop Point            | — | Completed Dearer Line | — | Completed Hand Line           |
| ■ | Staging Area          | — | Completed Hand Line   |   |                               |

# TRANSPORTATION

Happy Camp Complex  
 CA-KNF-007022  
 Sept 22, 2023

1:55,000  
 Map Updated: 9/21/2023 11:43 PM