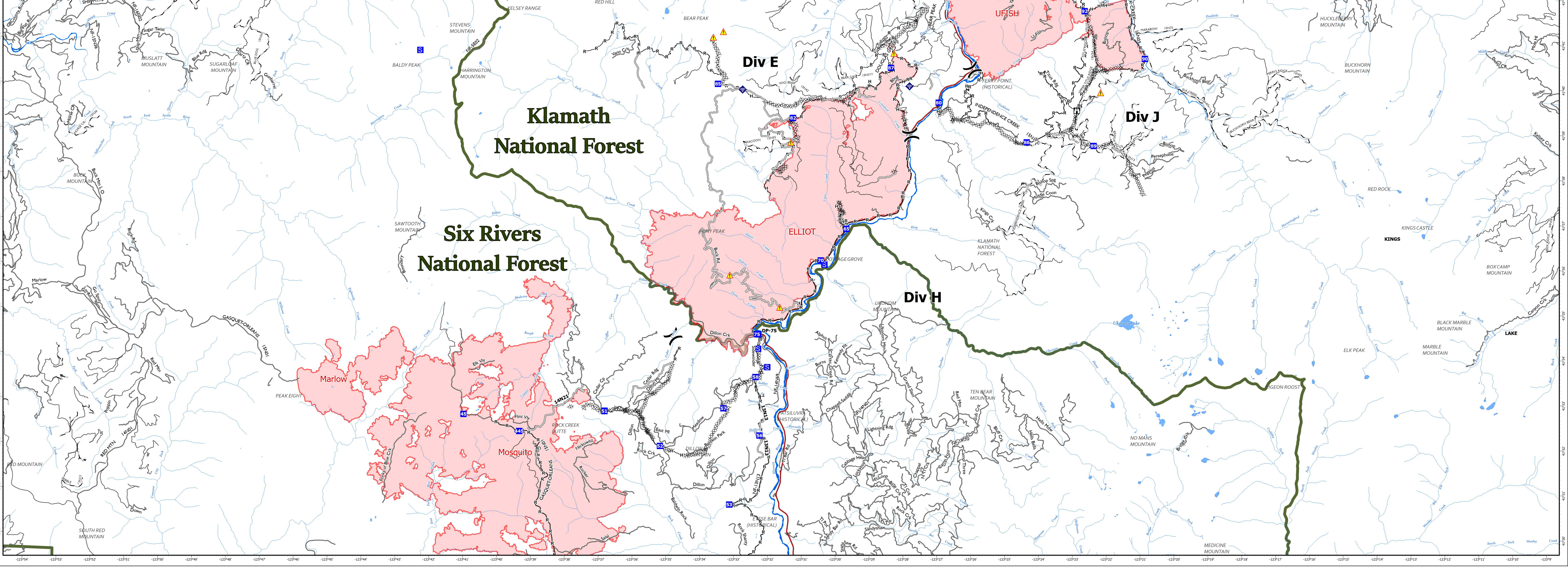


FC Point Type	Label	Latitude WGS84 DDM	Longitude WGS84 DDM
Drop Point	1	41° 46.665' N	123° 02.157' W
Drop Point	30	41° 44.459' N	123° 00.270' W
Drop Point	30	41° 47.439' N	122° 57.058' W
Drop Point	10	41° 50.700' N	123° 06.117' W
Drop Point	32	41° 46.654' N	122° 56.065' W
Drop Point	82	41° 39.330' N	123° 31.321' W
Drop Point	85	41° 40.075' N	123° 33.548' W
Drop Point	80	41° 39.685' N	123° 27.013' W
Drop Point	50	41° 40.050' N	123° 04.037' W
Drop Point	15	41° 49.597' N	123° 03.872' W
Drop Point	94	41° 42.807' N	123° 21.628' W
Drop Point	96	41° 43.558' N	123° 21.958' W
Drop Point	92	41° 41.735' N	123° 22.706' W
Drop Point	70	41° 36.173' N	123° 30.476' W
Drop Point	87	41° 40.453' N	123° 28.431' W
Drop Point	89	41° 43.806' N	123° 23.384' W
Drop Point	51	41° 38.991' N	123° 03.993' W
Drop Point	52	41° 38.409' N	123° 03.247' W
Drop Point	53	41° 38.991' N	123° 06.847' W
Drop Point	54	41° 41.107' N	123° 05.469' W
Drop Point	21	41° 36.329' N	123° 37.153' W
Drop Point	20	41° 20.901' N	123° 39.903' W
Drop Point	90	41° 40.682' N	123° 20.916' W
Drop Point	95	41° 44.933' N	123° 21.486' W
Drop Point	97	41° 46.468' N	123° 23.654' W
Drop Point	75	41° 34.323' N	123° 32.345' W
Drop Point	86	41° 38.815' N	123° 24.403' W
Drop Point	89	41° 38.742' N	123° 22.424' W
Drop Point	22	41° 29.090' N	123° 38.096' W
Drop Point	65	41° 36.878' N	123° 29.723' W
Drop Point	98	41° 46.107' N	123° 24.464' W
Drop Point	100	41° 46.818' N	123° 24.996' W
Drop Point	23	41° 20.545' N	123° 39.676' W
Drop Point	45	41° 32.708' N	123° 41.007' W
Drop Point	445	41° 32.338' N	123° 39.338' W
Drop Point	69	41° 38.097' N	123° 08.513' W
Drop Point	DP-46	41° 21.563' N	123° 45.211' W
Drop Point	47	41° 19.193' N	123° 45.621' W
Drop Point	25	41° 20.440' N	123° 40.661' W
Drop Point	29	41° 17.648' N	123° 40.026' W
Drop Point	49	41° 16.611' N	123° 42.049' W
Drop Point	DP-75	41° 34.520' N	123° 32.305' W
Drop Point	58	41° 33.572' N	123° 32.381' W
Drop Point	56	41° 32.274' N	123° 32.255' W
Drop Point	53	41° 30.734' N	123° 33.136' W
Drop Point	51	41° 32.795' N	123° 36.843' W
Drop Point	57	41° 32.874' N	123° 33.325' W
Drop Point	52	41° 32.029' N	123° 35.193' W
Drop Point	48	41° 18.467' N	123° 44.299' W
Drop Point	54	41° 29.251' N	123° 32.451' W
Drop Point	DP-27	41° 28.097' N	123° 47.383' W
Drop Point	25	41° 28.606' N	123° 44.650' W
Drop Point	93	41° 43.351' N	123° 26.326' W
Drop Point	26	41° 28.072' N	123° 46.301' W
Drop Point	28	41° 27.803' N	123° 48.421' W
Drop Point	DP-205	41° 23.894' N	123° 38.796' W
Drop Point	110	41° 49.618' N	123° 22.921' W
Drop Point	120	41° 52.960' N	123° 25.744' W
Helibase	Scott Valley HB	41° 33.470' N	122° 51.253' W
Helibase	Siskiyou HB	41° 46.100' N	122° 28.479' W
Incident Command Post	Happy Camp ICP	41° 47.848' N	123° 22.279' W
Lookout	Collins Baldy	41° 46.509' N	122° 57.097' W
Lookout		41° 39.522' N	123° 22.926' W
Staging Area		41° 40.784' N	123° 42.368' W
Staging Area		41° 36.801' N	123° 30.367' W
Staging Area		41° 44.531' N	122° 58.827' W
Staging Area		41° 49.684' N	122° 58.602' W



X	Division Break	▲	Hazard	▭	Wildfire Daily Fire Perimeter
ICP	Incident Command Post	—	Completed Dozer Line	—	Highways
DP	Drop Point	—	Completed Hand Line	—	Local Connectors
SA	Staging Area	—	Completed Road as Line	—	Local Roads
LO	Lookout	—	Access or Improved Road	—	Gravel Roads
IA	Internet Access	—	Dirt Roads	—	Dirt Roads

TRANSPORTATION

Happy Camp Complex
 CA-KNF-007022
 Sept 27, 2023

1:55,000
 Map Updated: 9/26/2023 8:44 PM