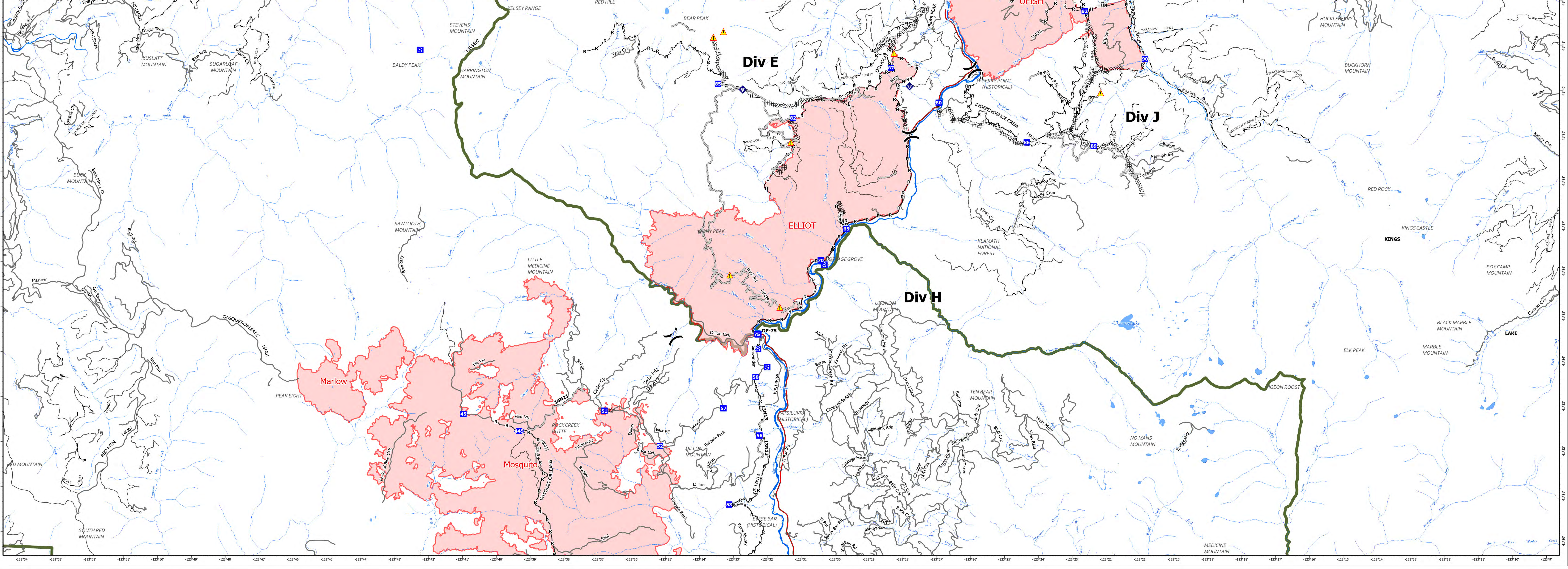


| FC Point Type | Label | Latitude WGS84 DDM | Longitude WGS84 DDM |
|-----------------------|-----------------|--------------------|---------------------|
| Drop Point | 1 | 41° 46.665' N | 123° 02.157' W |
| Drop Point | 30 | 41° 44.459' N | 123° 00.270' W |
| Drop Point | 30 | 41° 47.439' N | 123° 57.058' W |
| Drop Point | 10 | 41° 50.700' N | 123° 06.117' W |
| Drop Point | 32 | 41° 46.654' N | 123° 56.065' W |
| Drop Point | 82 | 41° 39.330' N | 123° 31.321' W |
| Drop Point | 85 | 41° 40.075' N | 123° 33.548' W |
| Drop Point | 80 | 41° 39.685' N | 123° 27.013' W |
| Drop Point | 50 | 41° 40.050' N | 123° 04.037' W |
| Drop Point | 15 | 41° 49.597' N | 123° 03.872' W |
| Drop Point | 94 | 41° 42.807' N | 123° 21.828' W |
| Drop Point | 96 | 41° 43.558' N | 123° 21.958' W |
| Drop Point | 92 | 41° 41.735' N | 123° 22.706' W |
| Drop Point | 70 | 41° 36.173' N | 123° 30.476' W |
| Drop Point | 87 | 41° 40.455' N | 123° 28.431' W |
| Drop Point | 89 | 41° 43.876' N | 123° 23.384' W |
| Drop Point | 51 | 41° 38.991' N | 123° 03.993' W |
| Drop Point | 52 | 41° 38.409' N | 123° 03.247' W |
| Drop Point | 53 | 41° 38.991' N | 123° 06.847' W |
| Drop Point | 54 | 41° 41.107' N | 123° 05.469' W |
| Drop Point | 21 | 41° 36.329' N | 123° 37.153' W |
| Drop Point | 20 | 41° 20.901' N | 123° 39.903' W |
| Drop Point | 90 | 41° 40.682' N | 123° 20.916' W |
| Drop Point | 95 | 41° 44.933' N | 123° 21.486' W |
| Drop Point | 97 | 41° 46.468' N | 123° 23.654' W |
| Drop Point | 75 | 41° 34.232' N | 123° 32.345' W |
| Drop Point | 86 | 41° 38.815' N | 123° 24.403' W |
| Drop Point | 89 | 41° 38.742' N | 123° 22.424' W |
| Drop Point | 22 | 41° 29.090' N | 123° 38.096' W |
| Drop Point | 65 | 41° 36.878' N | 123° 29.723' W |
| Drop Point | 98 | 41° 46.107' N | 123° 24.464' W |
| Drop Point | 100 | 41° 46.818' N | 123° 24.996' W |
| Drop Point | 23 | 41° 20.545' N | 123° 39.676' W |
| Drop Point | 45 | 41° 32.708' N | 123° 41.007' W |
| Drop Point | 445 | 41° 32.338' N | 123° 39.338' W |
| Drop Point | 69 | 41° 38.087' N | 123° 08.513' W |
| Drop Point | DP-46 | 41° 21.563' N | 123° 45.211' W |
| Drop Point | 47 | 41° 19.193' N | 123° 45.621' W |
| Drop Point | 25 | 41° 20.440' N | 123° 40.661' W |
| Drop Point | 29 | 41° 17.648' N | 123° 40.026' W |
| Drop Point | 49 | 41° 16.411' N | 123° 42.999' W |
| Drop Point | DP-75 | 41° 34.520' N | 123° 32.305' W |
| Drop Point | 58 | 41° 33.572' N | 123° 32.381' W |
| Drop Point | 56 | 41° 32.274' N | 123° 32.255' W |
| Drop Point | 53 | 41° 30.734' N | 123° 33.136' W |
| Drop Point | 51 | 41° 32.795' N | 123° 36.843' W |
| Drop Point | 57 | 41° 32.874' N | 123° 33.325' W |
| Drop Point | 52 | 41° 32.029' N | 123° 35.193' W |
| Drop Point | 48 | 41° 18.467' N | 123° 44.299' W |
| Drop Point | 54 | 41° 29.251' N | 123° 32.451' W |
| Drop Point | DP-27 | 41° 28.097' N | 123° 47.383' W |
| Drop Point | 25 | 41° 28.606' N | 123° 44.650' W |
| Drop Point | 93 | 41° 43.351' N | 123° 26.326' W |
| Drop Point | 26 | 41° 28.072' N | 123° 46.301' W |
| Drop Point | 28 | 41° 27.803' N | 123° 48.421' W |
| Drop Point | DP-205 | 41° 23.894' N | 123° 38.796' W |
| Drop Point | 110 | 41° 49.618' N | 123° 22.921' W |
| Drop Point | 120 | 41° 52.960' N | 123° 25.744' W |
| Helibase | Scott Valley HB | 41° 33.470' N | 122° 51.253' W |
| Helibase | Siskiyou HB | 41° 46.193' N | 122° 28.479' W |
| Incident Command Post | Happy Camp ICP | 41° 47.848' N | 123° 22.279' W |
| Lookout | | 41° 39.522' N | 123° 22.926' W |
| Staging Area | | 41° 40.794' N | 123° 42.368' W |
| Staging Area | | 41° 36.081' N | 123° 30.367' W |
| Staging Area | | 41° 34.001' N | 123° 32.309' W |
| Staging Area | | 41° 33.794' N | 123° 32.037' W |
| Staging Area | | 41° 32.803' N | 123° 36.843' W |



TRANSPORTATION

Happy Camp Complex CA-KNF-007022

Final

- X Division Break
- Incident Command Post
- Drop Point
- Staging Area
- Lookout
- Internet Access
- Hazard
- Completed Dozer Line
- Completed Hand Line
- Completed Road as Line
- Access or Improved Road
- Wildfire Daily Fire Perimeter
- Highways
- Local Connectors
- Local Roads
- Gravel Roads
- Dirt Roads

0 1 2 3 4 Miles

1:55,000

Map Updated: 9/30/2023 8:05 PM